

LOC
EA
CN ***
DIST
51

NOTES:

- CONNECTOR KEYING CONFORMS TO ANSI X3T9.5/84-4B.
- REFER TO DOC NO. 115-56037 FOR STATION CONNECTOR PIN ASSIGNMENTS.

SPECIFICATIONS:

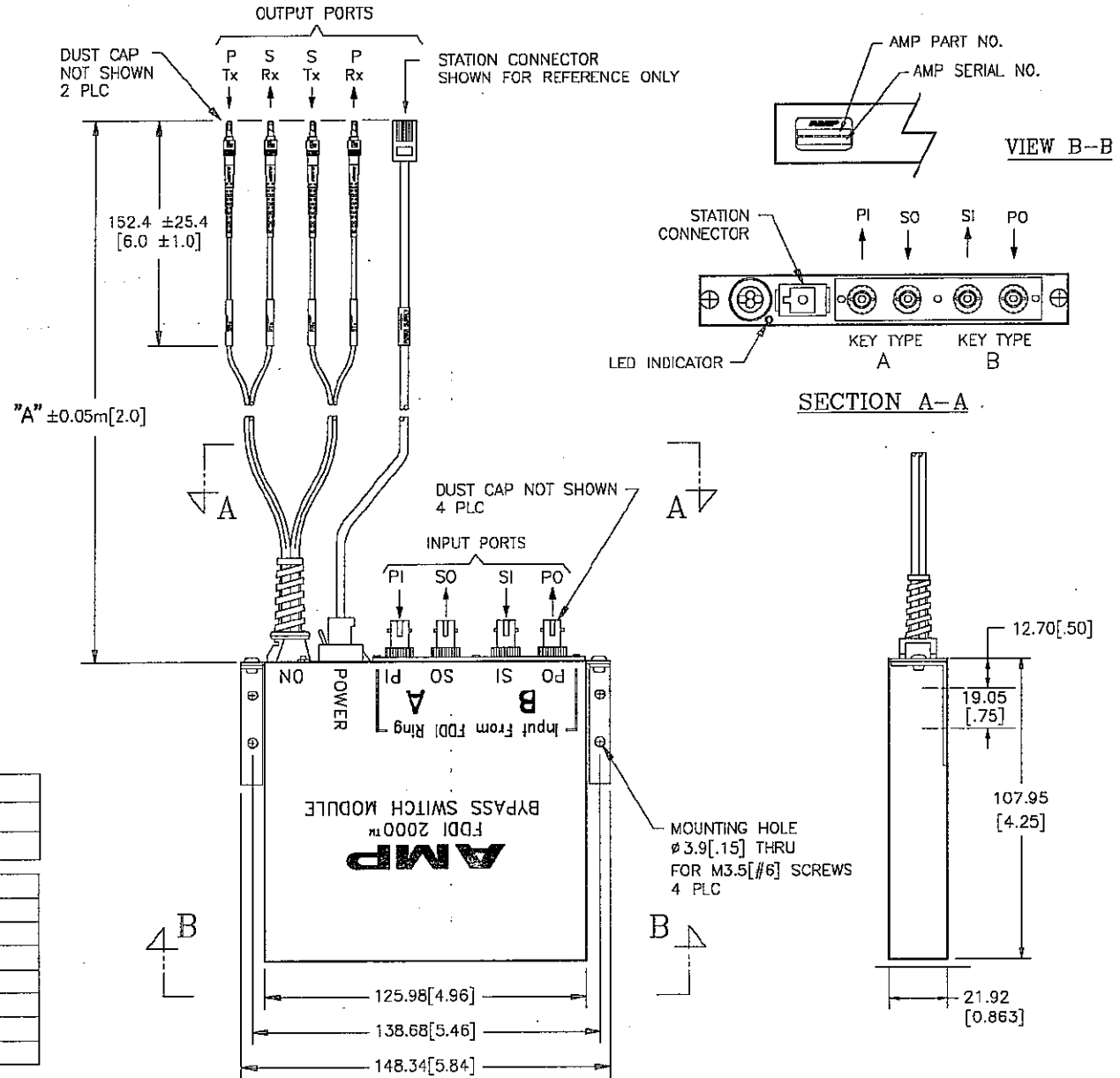
OPERATE MODE, POWER	
PI LINE TO P Rx STATION	2.1dB MAX
SI LINE TO S Rx STATION	2.1dB MAX
PTx STATION TO PO LINE	2.1dB MAX
STx STATION TO SO LINE	2.1dB MAX
BYPASS MODE, NO POWER	
PI LINE TO PO LINE	2.1dB MAX
SI LINE TO SO LINE	2.1dB MAX
PTx STATION TO P Rx STATION	5.0dB MAX
STx STATION TO S Rx STATION	5.0dB MAX
CONNECTOR LOSS	
OPTICAL CROSSTALK	45dB DOWN
POWER REQUIREMENTS	
	160ma MAX AT 5 VOLTS
SWITCHING SPEED	
	10 MILLISECONDS MAX

SWITCH LEGEND

PI = PRIMARY IN	PTx = PRIMARY TRANSMIT
SO = SECONDARY OUT	STx = SECONDARY TRANSMIT
PO = PRIMARY OUT	PRx = PRIMARY RECEIVE
SI = SECONDARY IN	SRx = SECONDARY RECEIVE

PART NO.	FIBER TYPE	"A" LENGTH
209180	50/125/250	1 METER
3-209180	50/125/250	3 METERS

DASH NUMBER	CONNECTOR TYPE
-1	6 POS. MTE RECEPTACLE
-2	6 POS. SHIELDED DIN PLUG
-3	6 POS. SHIELDED MOD PLUG
-4	6 POS. SHIELDED MINI DIN
-5	9 POS. SUB-D
-6	4 POS. MOD PLUG
-7	25 POS. SHIELDED HDE PLUG



CUSTOMER DRAWING ©1998

THIRD ANGLE PROJECTION		APPROVALS	DATE	AMP PPD INCORPORATED
DRWN	EMIL T.B.	941295		
METRIC		CHECKED	M. CUKROV	TITLE
UNLESS OTHERWISE NOTED DIMENSIONS ARE IN MM [X.XXX] ARE IN INCHES		ENGR	SHIN-LO CHIA	120695
THIS IS A CONTROLLED DOCUMENT OF AMP INCORPORATED IT IS SUBJECT TO CHANGE AND THE CONTROLLING ENGINEERING ORGANIZATION SHOULD BE CONTACTED FOR THE LATEST REVISION.		CAGE CODE	63570	FDDI 2000 BYPASS SWITCH MODULE ST ADAPTOR/ST PIGTAILS
ALL RIGHTS RESERVED		EC NUMBER	901	SIZE
		1.27	.13	2"
		REV.	120698	A
		SHEET	1	1
		DWG. NO.	209180	