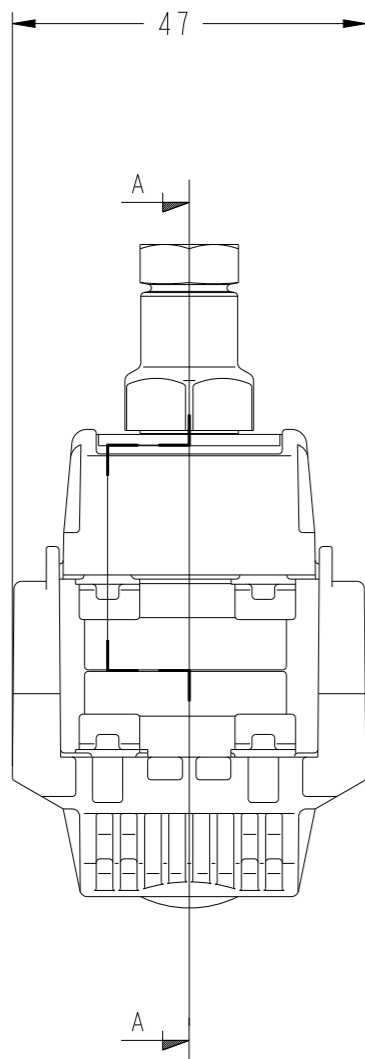


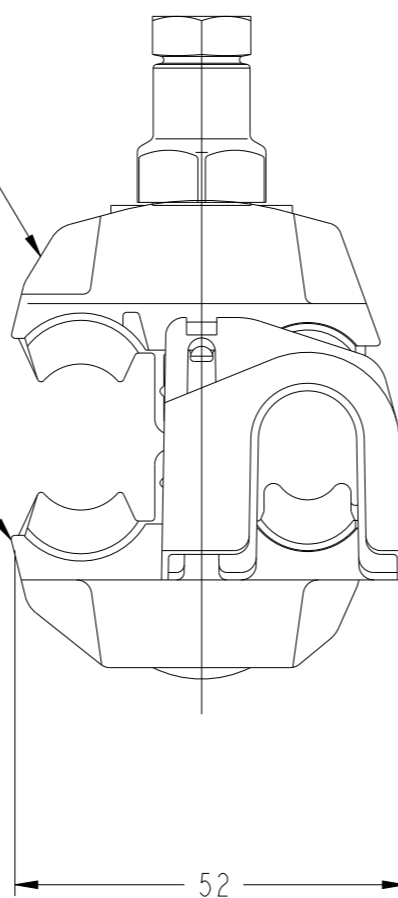
REVISIONS

P	LTR REV	DESCRIPTION MODIFICATIONS	DATE	DWN DESS.	APVD APP.
	A	Update drawing and revision	16/06/2022	JB	GN



UPPER BODY
(plastic)

LOWER BODY
(plastic)



SHEAR HEAD ELEMENT H13
NUT INTEGRATED
(Zamak)

WASHER
(Protected steel)

BLADE
(Tinned copper)

GREASE

SEALING PART
(Elastomer)

BOLT
(Protected steel)

SECTION A-A

87

KZ2-95U	2084533-1	16-95	4-35	11Nm
DESCRIPTION	PART NUMBER	MAIN (mm ²)	TAP (mm ²)	Breaking shear head torque

TOLERANCES UNLESS OTHERWISE SPECIFIED: -
TOLERANCES NON SPECIFIEES: -

THIS DRAWING IS A CONTROLLED DOCUMENT.
CE PLAN EST UN DOCUMENT CONTROLE PAR TYCO ELECTRONICS CORPORATION.
IL EST SUSCEPTIBLE D'ETRE REVISE. POUR OBTENIR LA DERNIERE REVISION,
CONTACTER LE SERVICE TECHNIQUE DE TYCO ELECTRONICS SIMEL SAS,
21220 GEVREY-CHAMBERTIN, FRANCE.

DWN/DESSINE 30/05/22
J. BERLAND

CHK/VERIFIE -

APVD/APPROUVE
G. NEDELLEC

PRODUCT SPEC
SPEC. PRODUIT -

APPLICATION SPEC
SPEC. APPLICATION -

WEIGHT
MASSE APPROX. -

CUSTOMER DRAWING /PLAN CLIENT



TE Connectivity

NAME
TITRE KZ2 CHINA

PRODUCT SPEC
SPEC. PRODUIT -

APPLICATION SPEC
SPEC. APPLICATION -

SIZE
FORMAT A3

CAGE CODE
00779

DRAWING NO
No PLAN
C=2084533

RESTRICTED TO
RESERVE A -

UNIQUEMENT
POUR REFERENCE

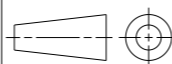
SCALE
ECHELLE -

SHEET
FEUILLE

OF
DE 1

REV
A

DIMENSIONS:
mm



TOLERANCES UNLESS OTHERWISE SPECIFIED:
TOLERANCES NON SPECIFIEES (SUIV NB DE DECIMALES):
0 PLC/DEC: ±-
1 PLC/DEC: ±0.1
2 PLC/DEC: ±0.01
3 PLC/DEC: ±0.001
4 PLC/DEC: ±0.0001
ANGLES ±-

MATERIAL
MATIERE -

FINISH
FINITION -