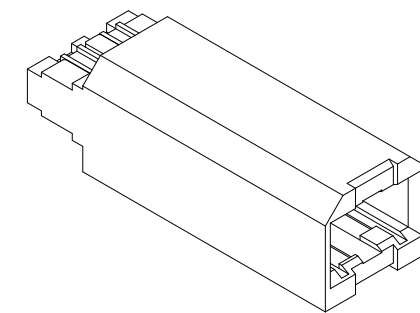
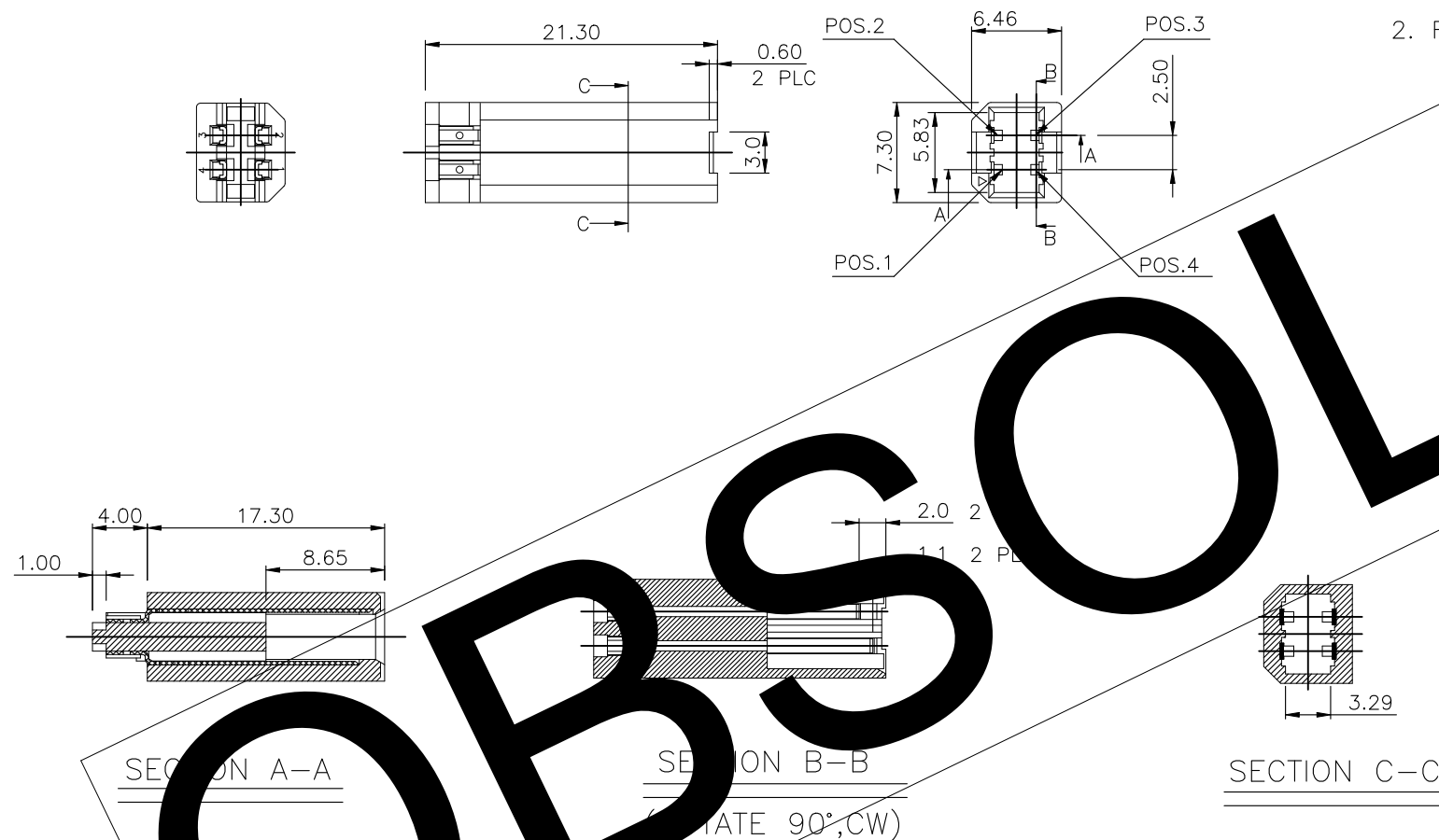


P	LTR	DESCRIPTION	DATE	DWN	APVD
	B1	REVISED PER ECN-24-285051	09SEP2024	TR	GA



PART ① : HOUSING WITH CONTACT

NOTE:

1. MATERIAL:
HOUSING: PBT WITH 30% GF. UL 94V-0 RATED. COLOR: SEE TABLE
CONTACTS: BRASS.
FRONT & BACK SHEET: 0.015" THICKNESS=0.0015.
2. FINISH:
CONTACTS: 0.0005" FLASH OVER
0.762um [30u"] MIN. PALLADIUM-NICKEL PLATE ON CONTACT AREA,
2.54um [100u"] MIN. MATTE-TIN PLATE ON SOLDER TAIL, WITH
1.27um [50u"] MIN. NICKEL ENTIRE CONTACT UNDERPLATED
FRONT & BACK SHEET: 5.0um [150u"] MIN. BRIGHT TIN PLATED
2.5um [98u"] MIN. COPPER UNDERPLATED ALL OVER

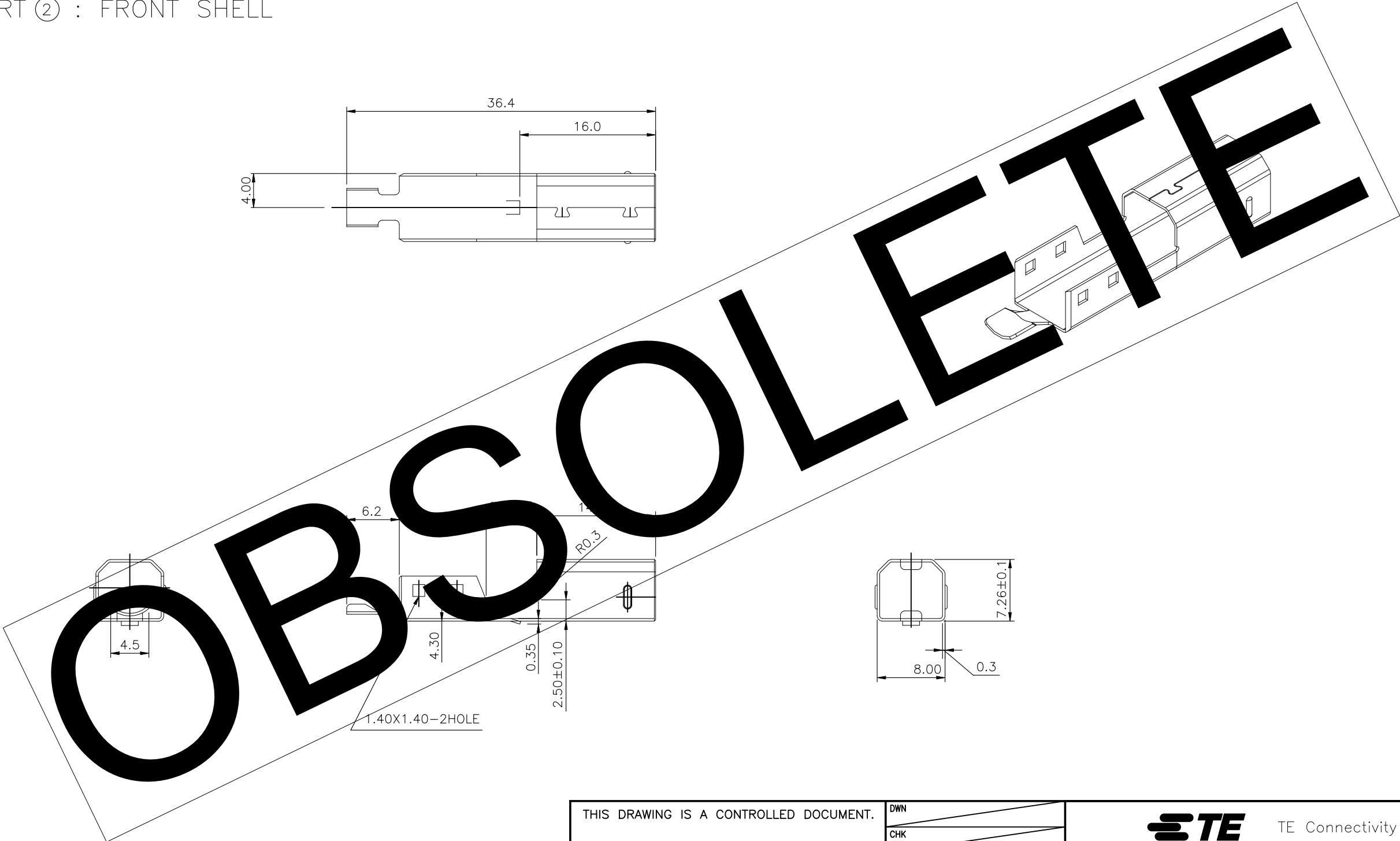



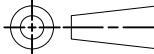
OBSOLETE	① ② ③	BLACK	2041066-2
OBSOLETE	① ② ③	WHITE	2041066-1
	PART	HSG COLOR	PART NUMBER

THIS DRAWING IS A CONTROLLED DOCUMENT.		DWN B. HSING 26SEP2008 CHK S. CHIEN 26SEP2008 APVD W. KODAMA 26SEP2008		 TE Connectivity	
DIMENSIONS: MM		TOLERANCES UNLESS OTHERWISE SPECIFIED: 0 PLC ± — 1 PLC ± 0.3 2 PLC ± 0.2 3 PLC ± — 4 PLC ± — ANGLES ± 3°		NAME USB PLUG KITS, 4 POS., TYPE B	
		PRODUCT SPEC 108-57714 QUALIFICATION TEST REPORT 501-57926		SIZE A3	
MATERIAL SEE NOTE		FINISH SEE NOTE		CAGE CODE 00779	
		WEIGHT 3.6 GRAMS		DRAWING NO C-2041066	
CUSTOMER DRAWING				RESTRICTED TO —	
				SCALE —	
				SHEET 1 OF 5	
				REV B1	

LOC	DIST	REVISIONS				
DW		P	LTR	DESCRIPTION	DATE	APVD
				SEE SHEET 1.		

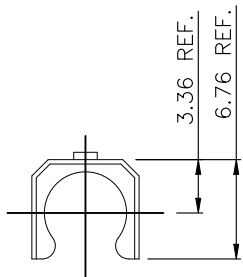
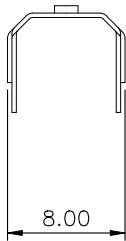
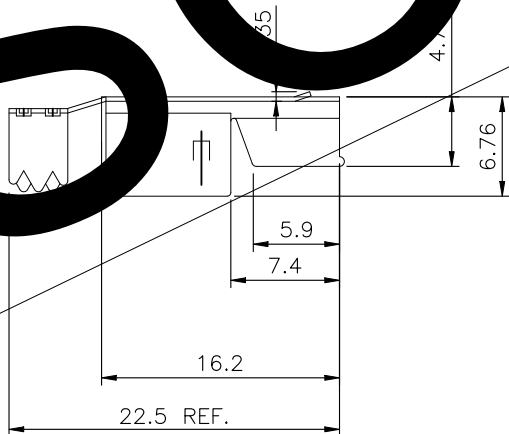
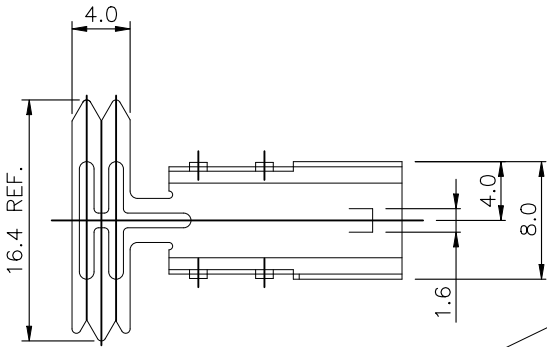
PART ② : FRONT SHELL




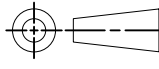
THIS DRAWING IS A CONTROLLED DOCUMENT.		DWN		<div> TE Connectivity</div>	
		CHK			
DIMENSIONS: MM		APVD		NAME	
		PRODUCT SPEC		USB PLUG KITS, 4 POS., TYPE B	
TOLERANCES UNLESS OTHERWISE SPECIFIED: 0 PLC ± - 1 PLC ± 0.3 2 PLC ± 0.2 3 PLC ± - 4 PLC ± - ANGLES ± -		APPLICATION SPEC		RESTRICTED TO	
MATERIAL		WEIGHT		SIZE	CAGE CODE
				A3	00779
		CUSTOMER DRAWING		DRAWING NO	C=2041066
				SCALE	SHEET
				—	2 OF 5
				REV	B1

LOC	DIST	REVISIONS				
DW		P	LTR	DESCRIPTION	DATE	APVD
				SEE SHEET 1.		

PART ③ : BACK SHELL

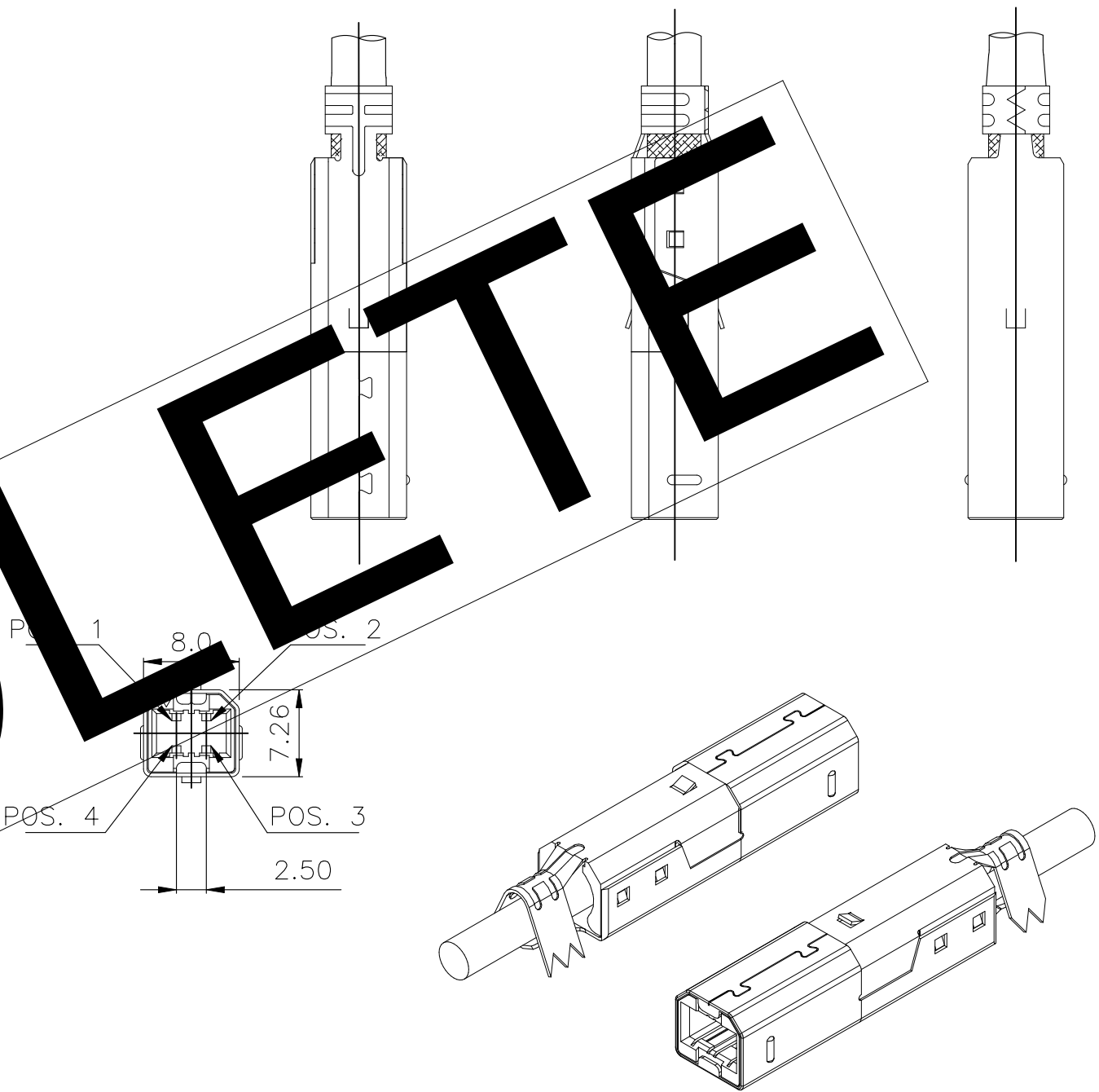
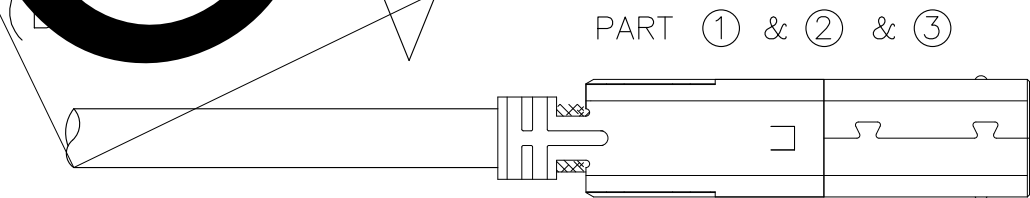
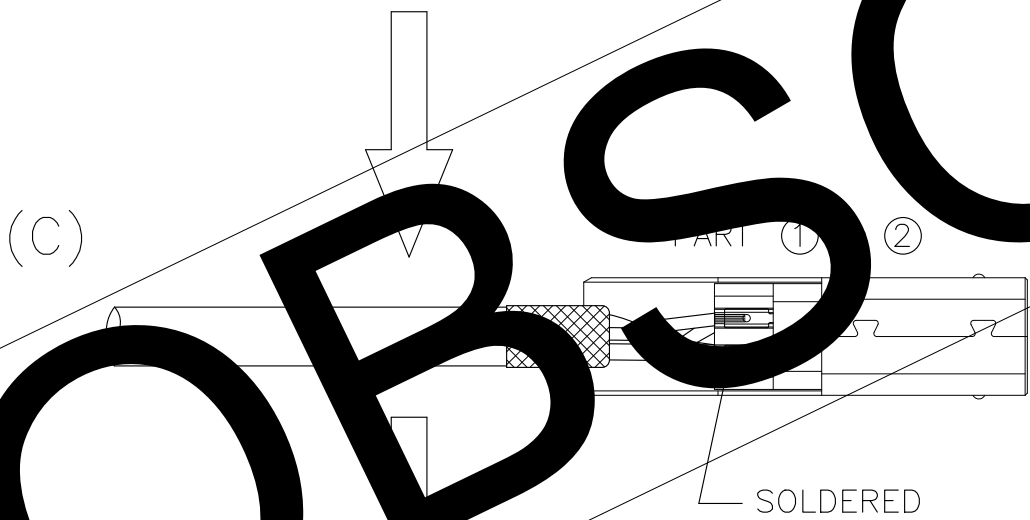
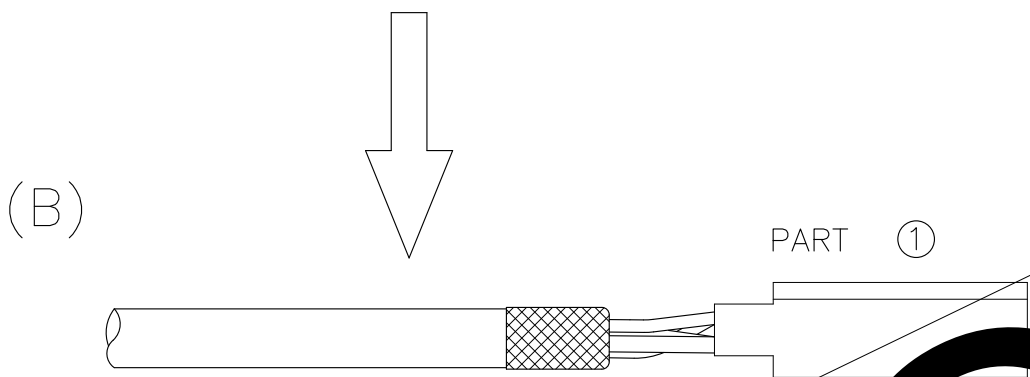
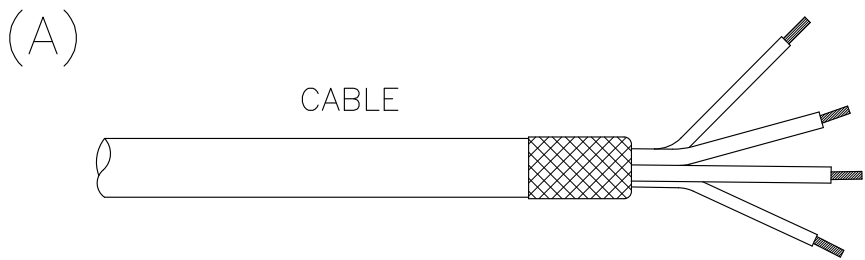


VIEW A

THIS DRAWING IS A CONTROLLED DOCUMENT.		DWN		 TE Connectivity	
		CHK			
		APVD			
		PRODUCT SPEC			
DIMENSIONS: MM		TOLERANCES UNLESS OTHERWISE SPECIFIED:		NAME	
		0 PLC ± -		USB PLUG KITS, 4 POS., TYPE B	
		1 PLC ± 0.3			
		2 PLC ± 0.2			
		3 PLC ± -			
4 PLC ± -		4 PLC ± -		SIZE	
MATERIAL		FINISH		CAGE CODE	
				DRAWING NO	
				RESTRICTED TO	
				A300779C=2041066	
				SCALE	
				SHEET	
				3 OF 5	
				REV	
				B1	
				CUSTOMER DRAWING	

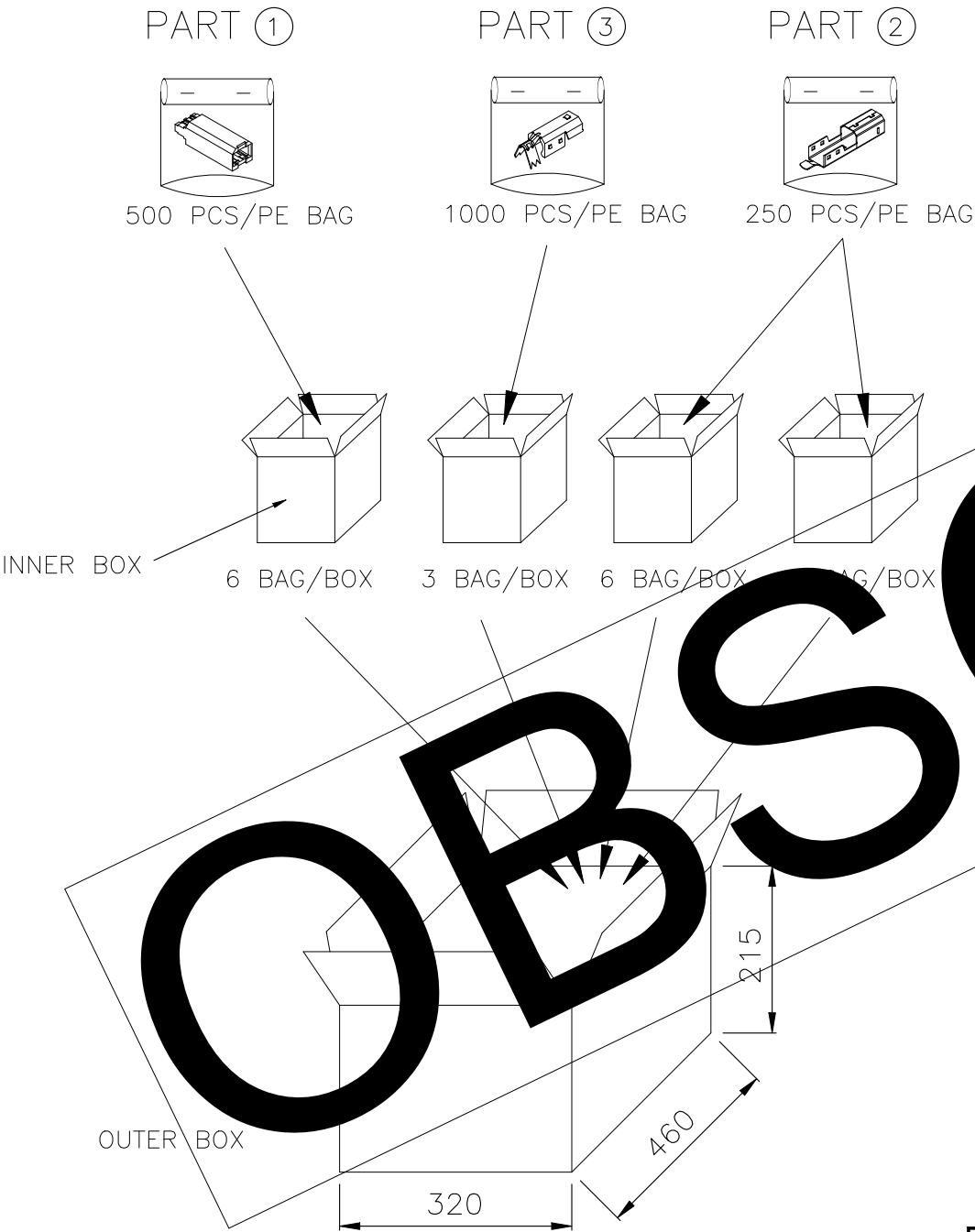
LOC	DIST	REVISIONS				
DW		P	LTR	DESCRIPTION	DATE	DWN APVD
				SEE SHEET 1.		

RECOMMEND ASSEMBLY PROCESS:



THIS DRAWING IS A CONTROLLED DOCUMENT.			TE Connectivity			
DIMENSIONS: MM			NAME			
TOLERANCES UNLESS OTHERWISE SPECIFIED:			USB PLUG KITS, 4 POS., TYPE B			
MATERIAL			SIZE	CAGE CODE	DRAWING NO	RESTRICTED TO
FINISH			A3	00779	C=2041066	
CUSTOMER DRAWING			SCALE	SHEET	REV	
				4 OF 5	B1	

LOC	DIST —	REVISIONS					
DW		P	LTR	DESCRIPTION	DATE	DWN	APVD
				SEE SHEET 1.			



NOTE:

1. DIMENSION:

PE BAG: 260 X 180 X 6 mm(SHELL)

330 X 270 X 0.2 mm.(HOUSING WITH CONTACT)

INNER BOX: 220 X 160 X 200 mm.

OUTER BOX: 460 X 320 X 215 mm.

2. QUANTITY: (SEE TABLE A)

WEIGHT: (SEE TABLE A)

TABLE A:

PART NAME	QT'Y/INNER BOX	QT'Y/OUTER BOX	N.W(KG)	G.W(KG)
HOUSING WITH CONTACT	3000 pcs	3000 pcs	10.8	12
BACK SHELL	3000 pcs	3000 pcs		
FRONT SHELL	1500 pcs	3000 pcs		

THIS DRAWING IS A CONTROLLED DOCUMENT.

DIMENSIONS:
MM

MATERIAL

TOLERANCES UNLESS OTHERWISE SPECIFIED:

0 PLC ± -

1 PLC ± -

2 PLC ± -

3 PLC ± -

4 PLC ± -

ANGLES ± -

FINISH

DWN

CHK

APVD

PRODUCT SPEC

APPLICATION SPEC

WEIGHT

CUSTOMER DRAWING

TE Connectivity

NAME

USB PLUG KITS, 4 POS., TYPE B

SIZE

CAGE CODE

DRAWING NO

RESTRICTED TO

A300779C=2041066

SCALE

SHEET 5 of 5

REV B1