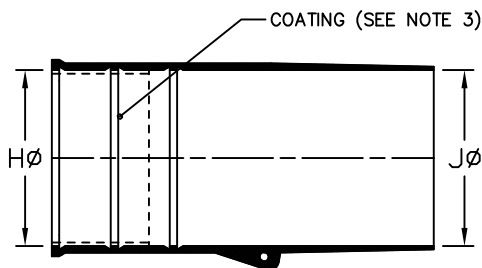


1. All dimensions are in $\frac{\text{inches}}{\text{millimeters}}$

1. All dimensions are in $\frac{\text{inches}}{\text{[millimeters]}}$
2. Dimensions appearing in table are as follows:
 - a - As Supplied
 - b - After Unrestricted Recovery

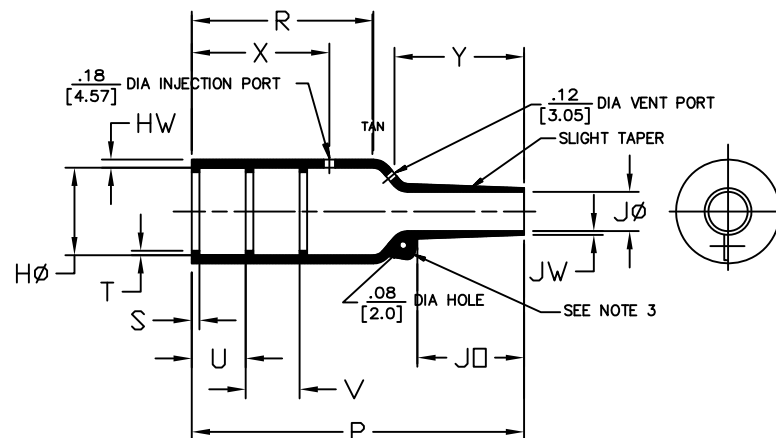
3. COATING (ADHESIVE):
AS SUPPLIED DIMENSIONS APPEARING
IN TABLE ARE FOR UNCOATED PARTS.
WHEN COATING IS ADDED, ENTRY
DIAMETER WILL BE REDUCED BY .06 [1.5] MAX.



AS SUPPLIED

Base part number _____
Material dash number _____
(See Computability Chart)
Modification number _____
Adhesive slash number _____
Color Designator _____

TABLE OF DIMENSIONS														
PART NUMBER	H		J		P	R	S	T	U&V	JO	HW	JW	X	Y
	Min	Max	Min	Max	±10%	±10%	±10%	±10%	±10%	±10%	±20%	±20%	±20%	±20%
	a	b	a	b	b	b	b	b	b	b	b	b	b	b
202K153-X-20	<u>1.42</u> [36.0]	<u>0.88</u> [22.4]	<u>1.42</u> [36.0]	<u>0.33</u> [8.4]	<u>3.15</u> [80.0]	<u>1.65</u> [42.0]	<u>0.12</u> [3.0]	<u>0.04</u> [1.0]	<u>0.79</u> [20.0]	<u>0.77</u> [19.5]	<u>0.08</u> [2.0]	<u>0.04</u> [1.1]	<u>1.26</u> [32.0]	<u>1.18</u> [30.0]
202K163-X-20	<u>1.69</u> [43.0]	<u>1.11</u> [28.2]	<u>1.69</u> [43.0]	<u>0.39</u> [9.9]	<u>3.90</u> [99.0]	<u>2.40</u> [61.0]	<u>0.12</u> [3.0]	<u>0.07</u> [1.7]	<u>0.79</u> [20.0]	<u>0.83</u> [21.0]	<u>0.09</u> [2.2]	<u>0.05</u> [1.2]	<u>2.05</u> [52.0]	<u>1.18</u> [30.0]





AFTER UNRESTRICTED RECOVERY

Raychem Molded Parts
CUSTOMER DRAWING

If this document is printed it becomes uncontrolled. Check for the latest revision

COMPATABILITY CHART					
MATERIAL DASH NO.	MATERIAL DESCRIPTION	RT SPEC	COATING SLASH NO.	COATING S NO.	COATING DESCRIPTION
-3	POLYOLEFIN, SEMI RIGID (RT-301)	RT-301	/42; /86	S-1017; S-1048	ADHESIVE
-4	POLYOLEFIN, FLEXIBLE (RT-1304)	RT-1304	/42; /86	S-1017; S-1048	ADHESIVE
-25	Elastomer, Fluid Resistant	RT-1325	/225	S-1048	ADHESIVE
-100	POLYOLEFIN, SEMI-FLEXIBLE ZEROHAL	RT-1323	/184; /86	S-1030; S-1048	ADHESIVE

THIS DRAWING AND THE INFORMATION SET FORTH HEREON ARE THE PROPERTY OF TYCO ELECTRONICS CORPORATION, AND ARE TO BE HELD IN TRUST AND CONFIDENCE. PUBLICATION, DUPLICATION, DISCLOSURE OR USE FOR ANY PURPOSE NOT EXPRESSLY AUTHORIZED IN WRITING BY TYCO ELECTRONICS CORPORATION IS PROHIBITED.

UNLESS OTHERWISE SPECIFIED DIMENSIONS ARE METRIC AND INCHES ARE IN BRACKETS.		DRAWN M. Mazariegos 12/04/12		APPROVED S. Gravano 12/04/12		 TE Connectivity	
DECIMAL TOLERANCES XXX ± 0.13 (.005) XX ± 0.25 (.01) X ± 0.50 (.10)		RPN _____		TITLE Boot, Straight, With Lip			
ANGLE TOLERANCE X .X		CAD FILE: 202K1XX-X-20_CD					
TYCO ELECTRONICS RESERVES THE RIGHT TO AMEND THIS DRAWING AT ANY TIME. USERS SHOULD EVALUATE THE SUITABILITY OF THE PRODUCT FOR THEIR APPLICATION.		THIRD ANGLE PROJECTION 		SIZE B		CODE IDENT. NO. 06090	
				DWG. NO. 202K1XX-X-20			
©2012 Tyco Electronics Corporation. All rights reserved.				DO NOT SCALE THIS DRAWING		SHEET 1 OF 1	