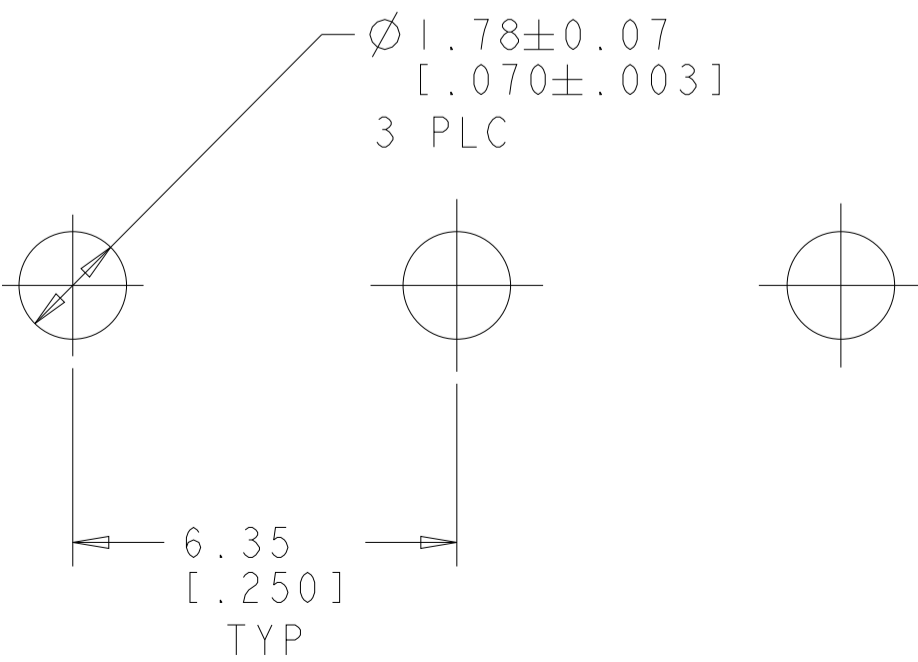
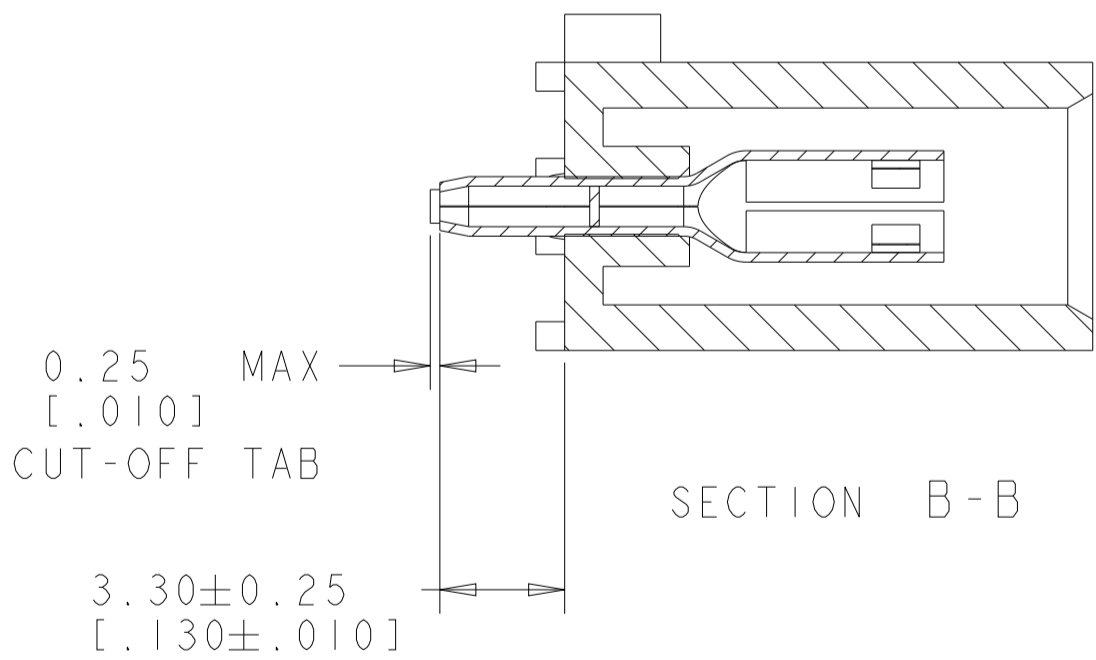
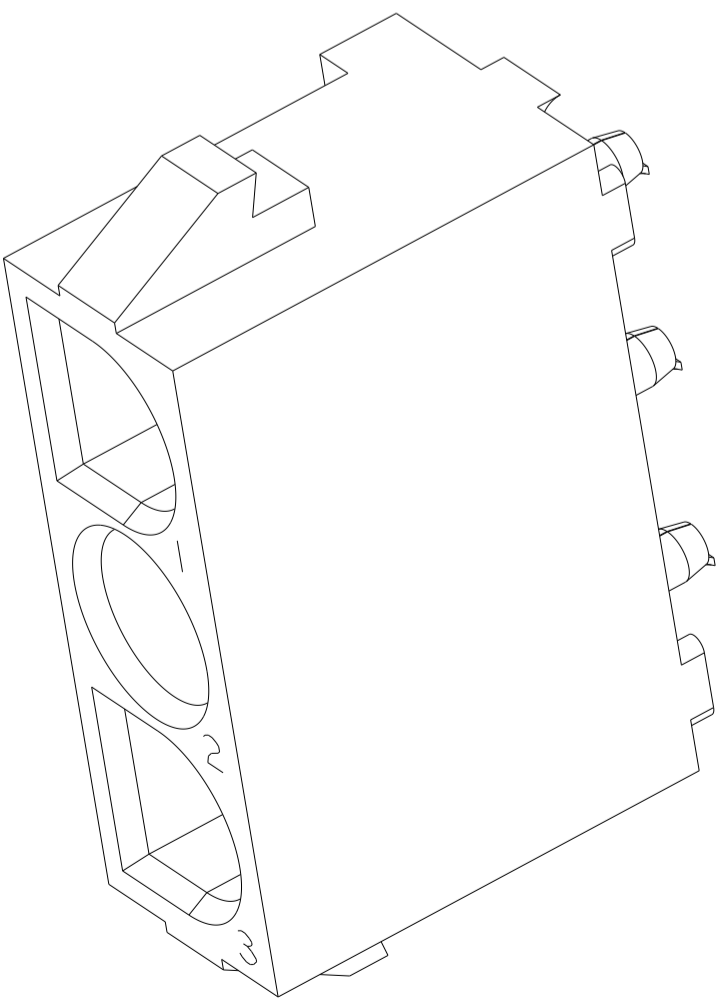
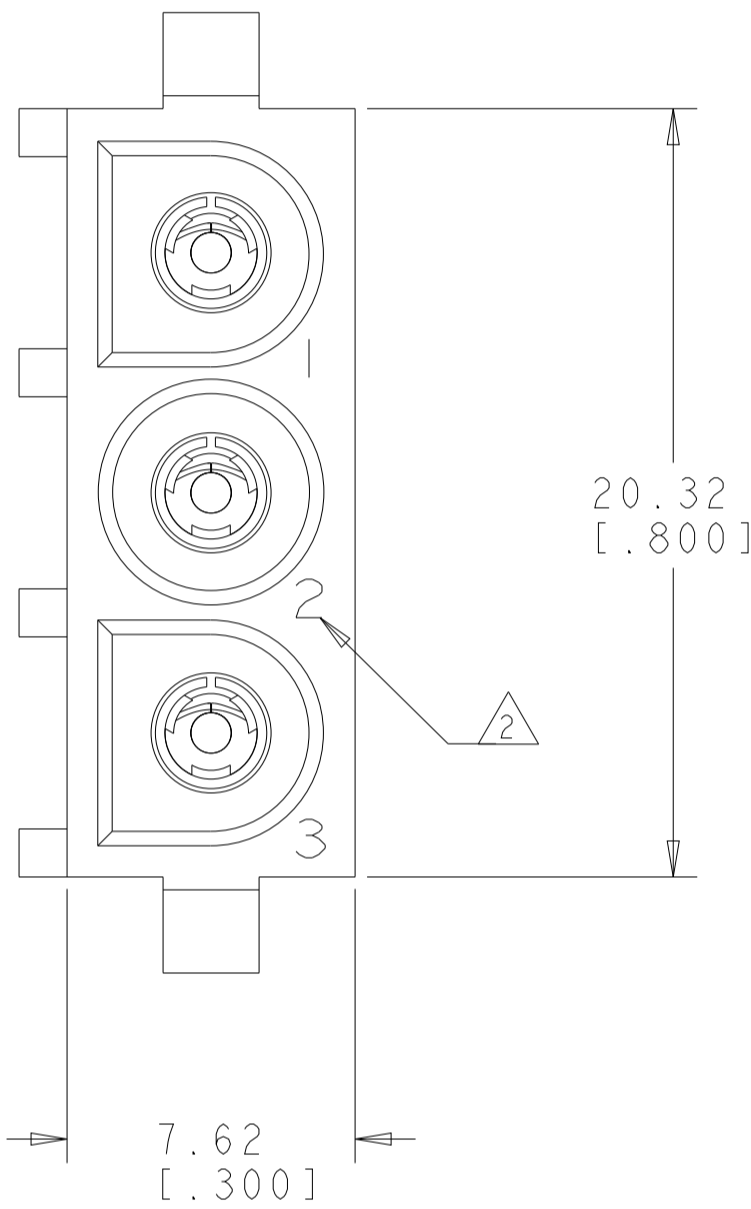
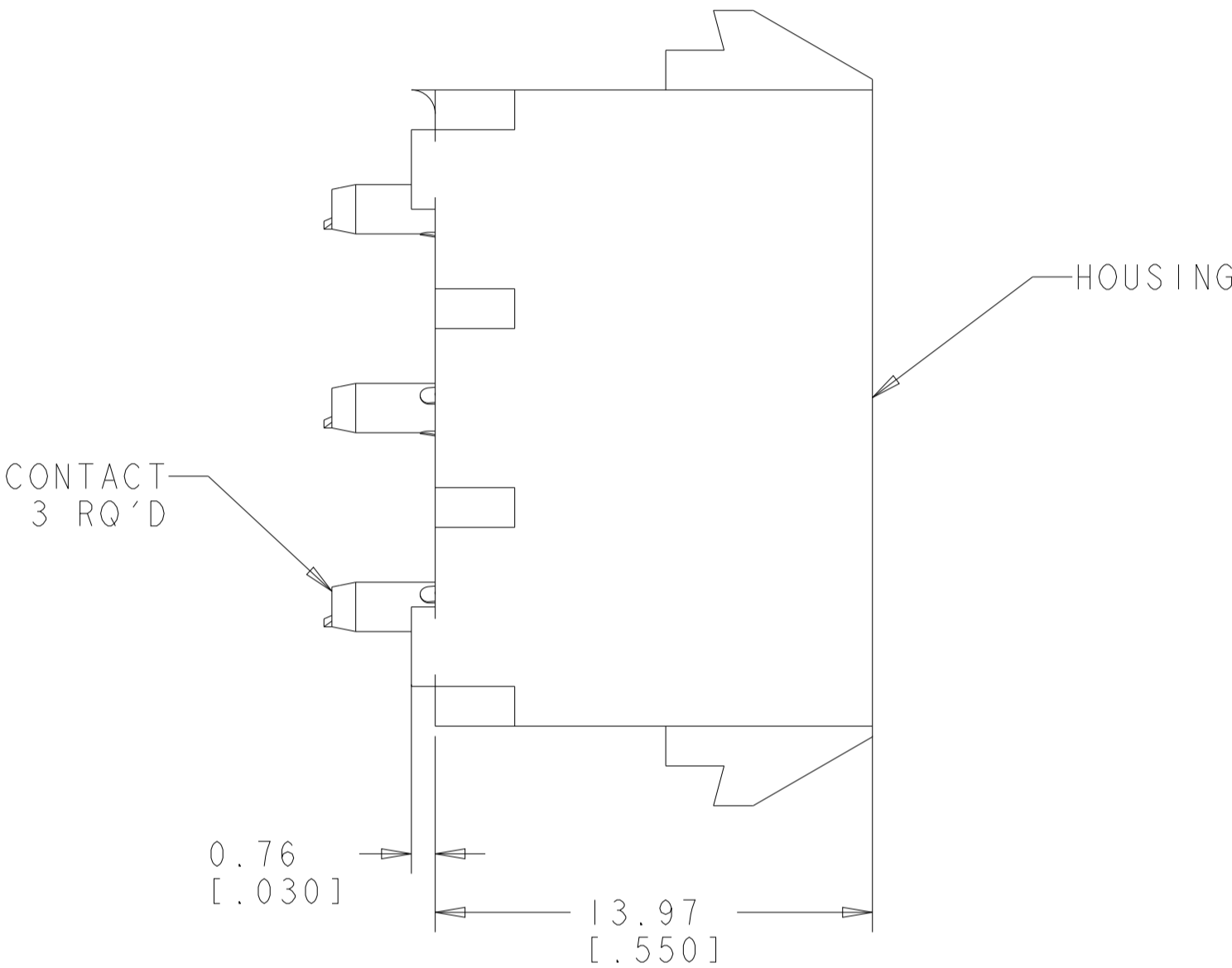
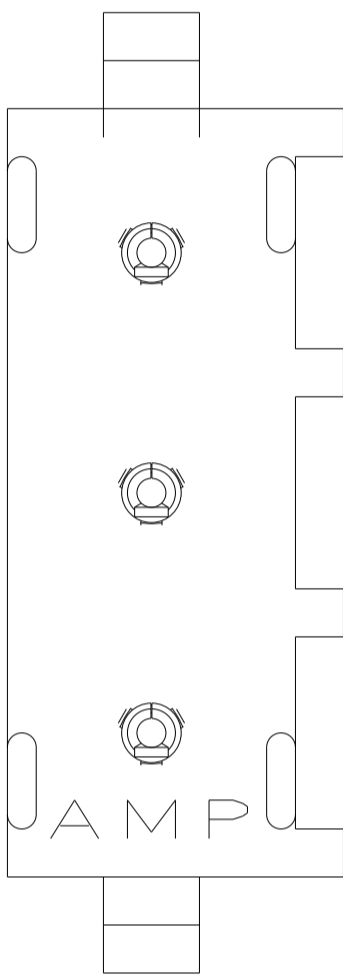


LOC		DIST		REVISIONS					
CM	00	P	LTR	DESCRIPTION		DATE	DWN	APVD	
		A		REVISED PER ECR-12-005286		22MAR2012	KH	TM	
		A1		REVISED PER ECR-21-119230		08NOV2021	SS	VS	

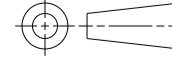

1. PARTS COMPLY TO AMP SOLDERABILITY SPECIFICATION 109-11-3.

2. CIRCUIT IDENTIFICATION CHARACTERS ARE ADJACENT TO THE INDICATED CAVITIES, BUT LOCATION AND ORIENTATION MAY DIFFER FROM PRINT.

3. DIMENSIONS SHOWN REPRESENT PRODUCT IN DRY CONDITION. ADDITIONAL 2% GROWTH DUE TO END USE LOCATION MOISTURE ABSORPTION MAY OCCUR AND SHOULD BE ACCOUNTED FOR.



RECOMMENDED MOUNTING HOLE PATTERN FOR 1.57 [.062] THICK P.C. BOARD

PHOSPOR BRONZE, PRE-TIN		NYLON, UL94V-2, NATURAL		2029402-1				
SOCKET CONTACT MATERIAL AND FINISH		HOUSING MATERIAL AND COLOR		PART NUMBER				
<div>THIS DRAWING IS A CONTROLLED DOCUMENT.</div> <div><div>DIMENSIONS: mm[INCHES]</div><div></div><div>MATERIAL SEE TABLE</div></div> <div><div>TOLERANCES UNLESS OTHERWISE SPECIFIED:</div><div>0 PLC ±" 1 PLC ±" 2 PLC ±0.13(.005) 3 PLC ±" 4 PLC ±" ANGLES ±0°30'</div><div>FINISH SEE TABLE</div></div>		DWN: 16NOV11 JR RUTH		<div> TE Connectivity</div> <div>SOCKET HEADER ASSEMBLY, 3 CIRCUIT, UNIVERSAL MATE-N-LOK™</div>				
		CHK: 16NOV11 TOM MICHIELUTTI				NAME		
		APVD: 16NOV11 TOM MICHIELUTTI						
		PRODUCT SPEC						
		APPLICATION SPEC		SIZE	CAGE CODE	DRAWING NO	RESTRICTED TO	
		WEIGHT -						
		CUSTOMER DRAWING		SCALE 8:1		SHEET 1 OF 1		REV A