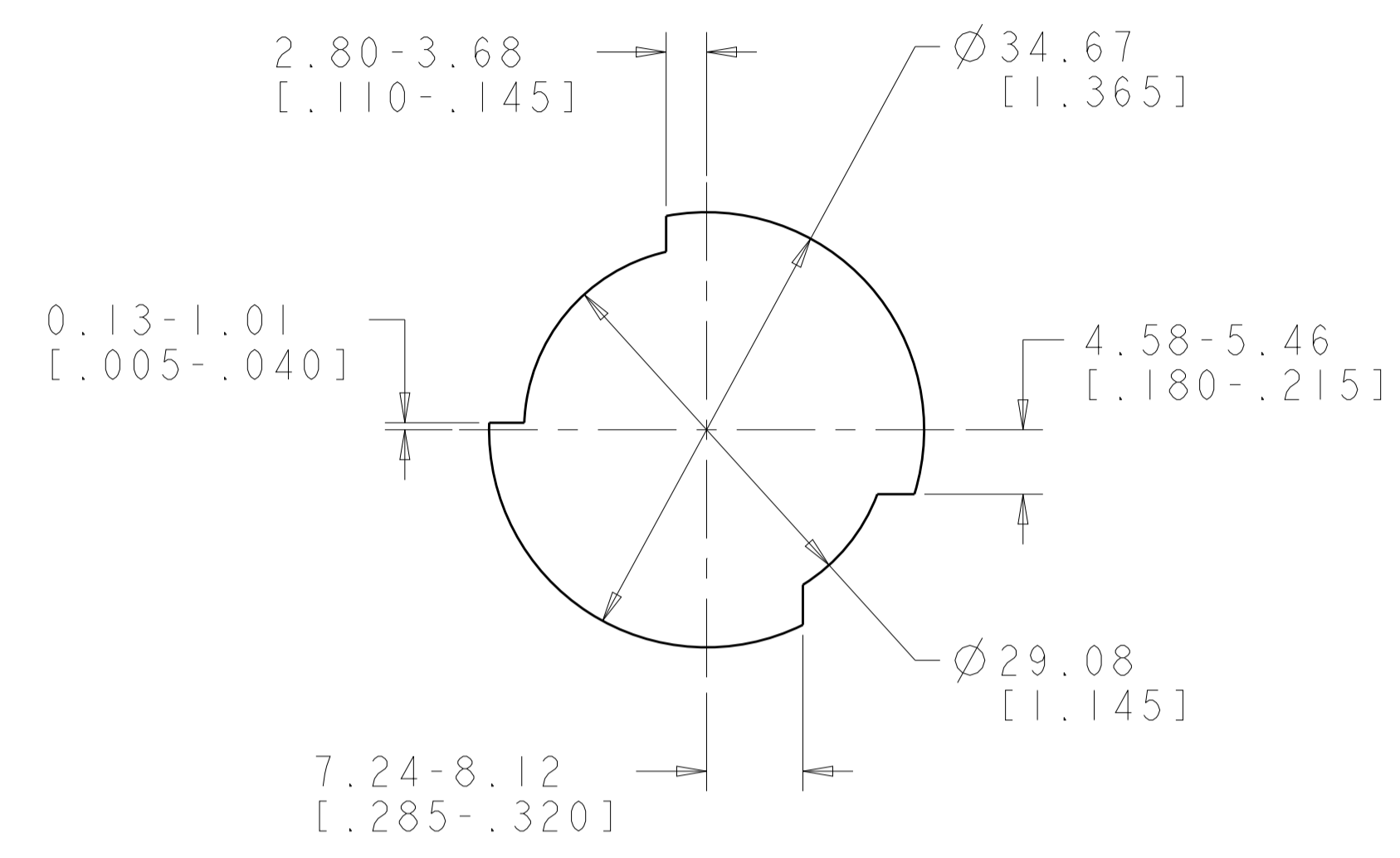
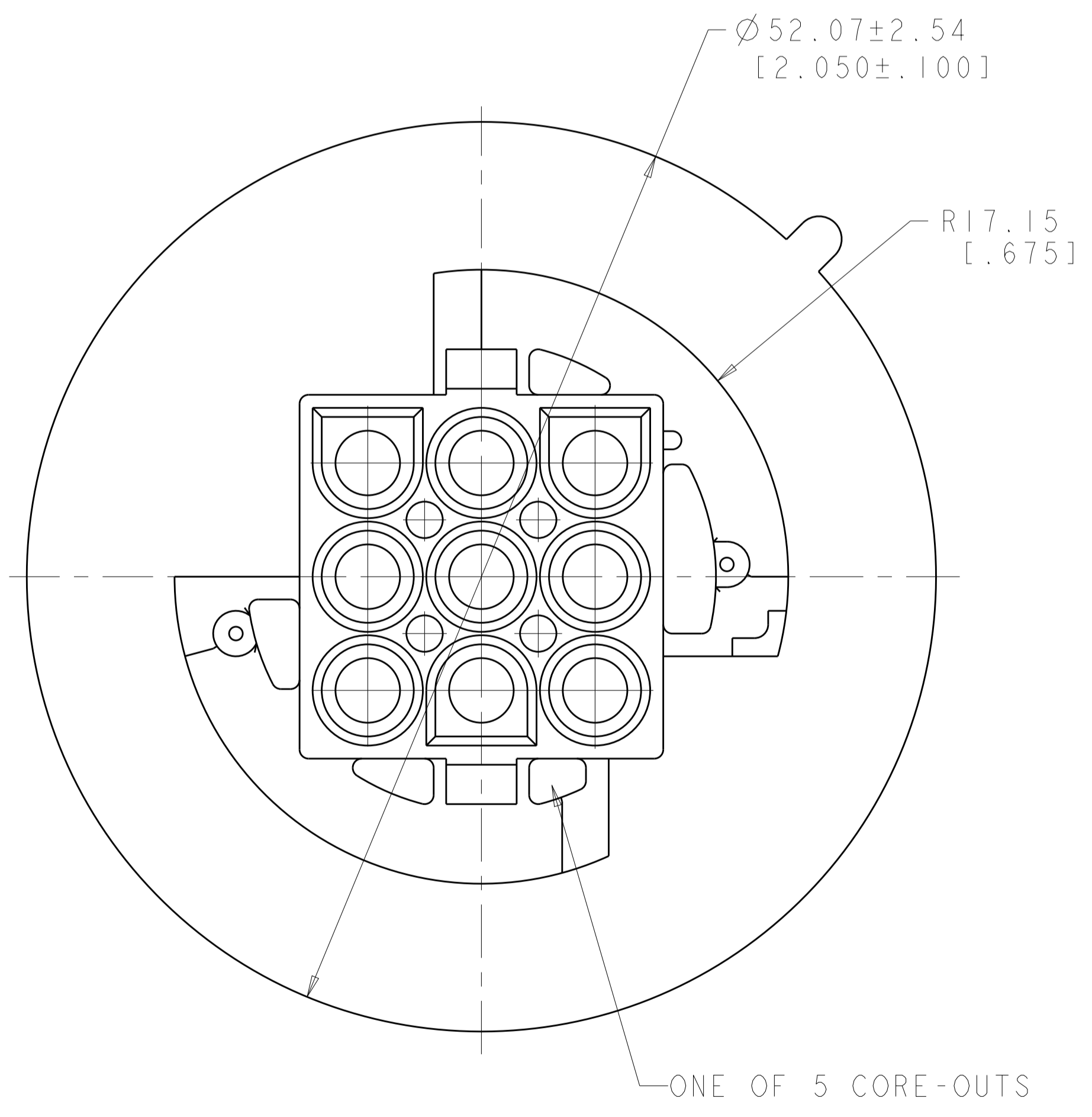


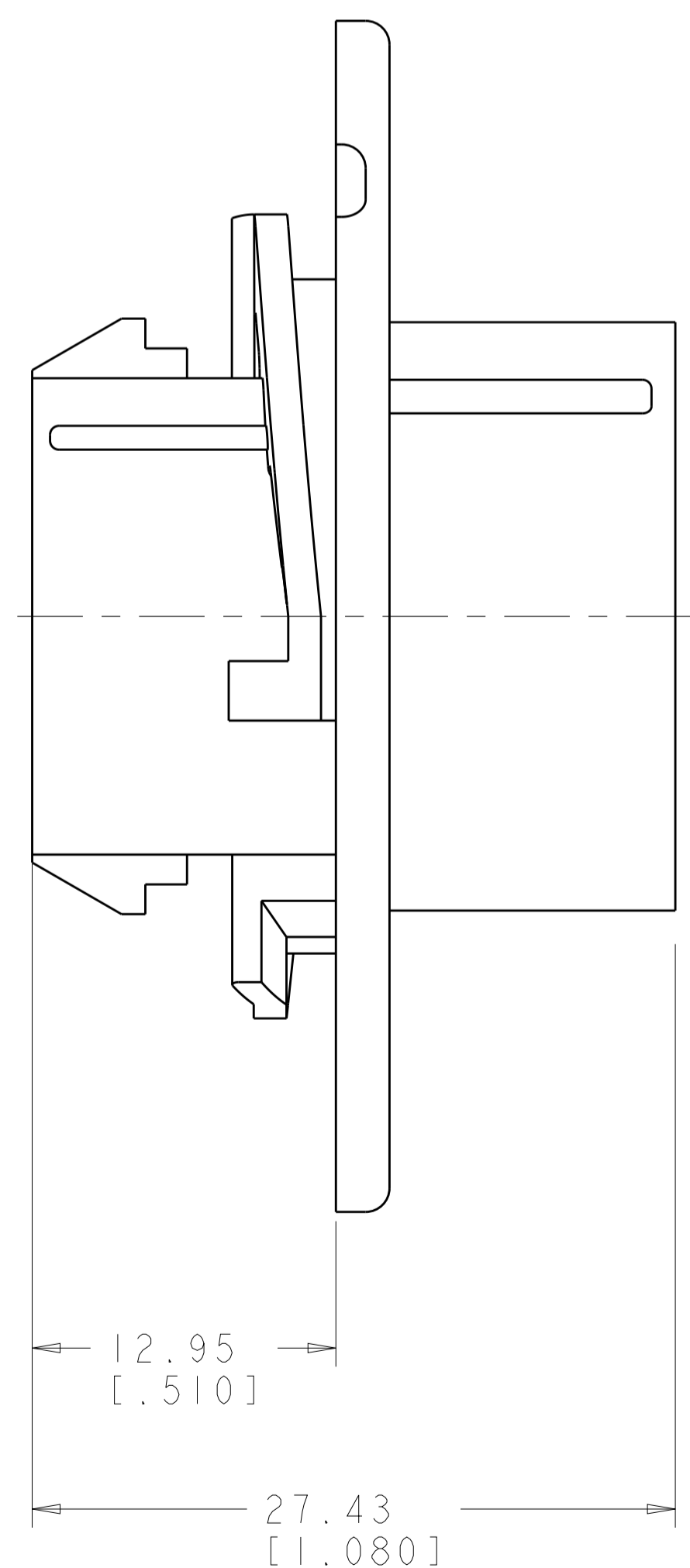
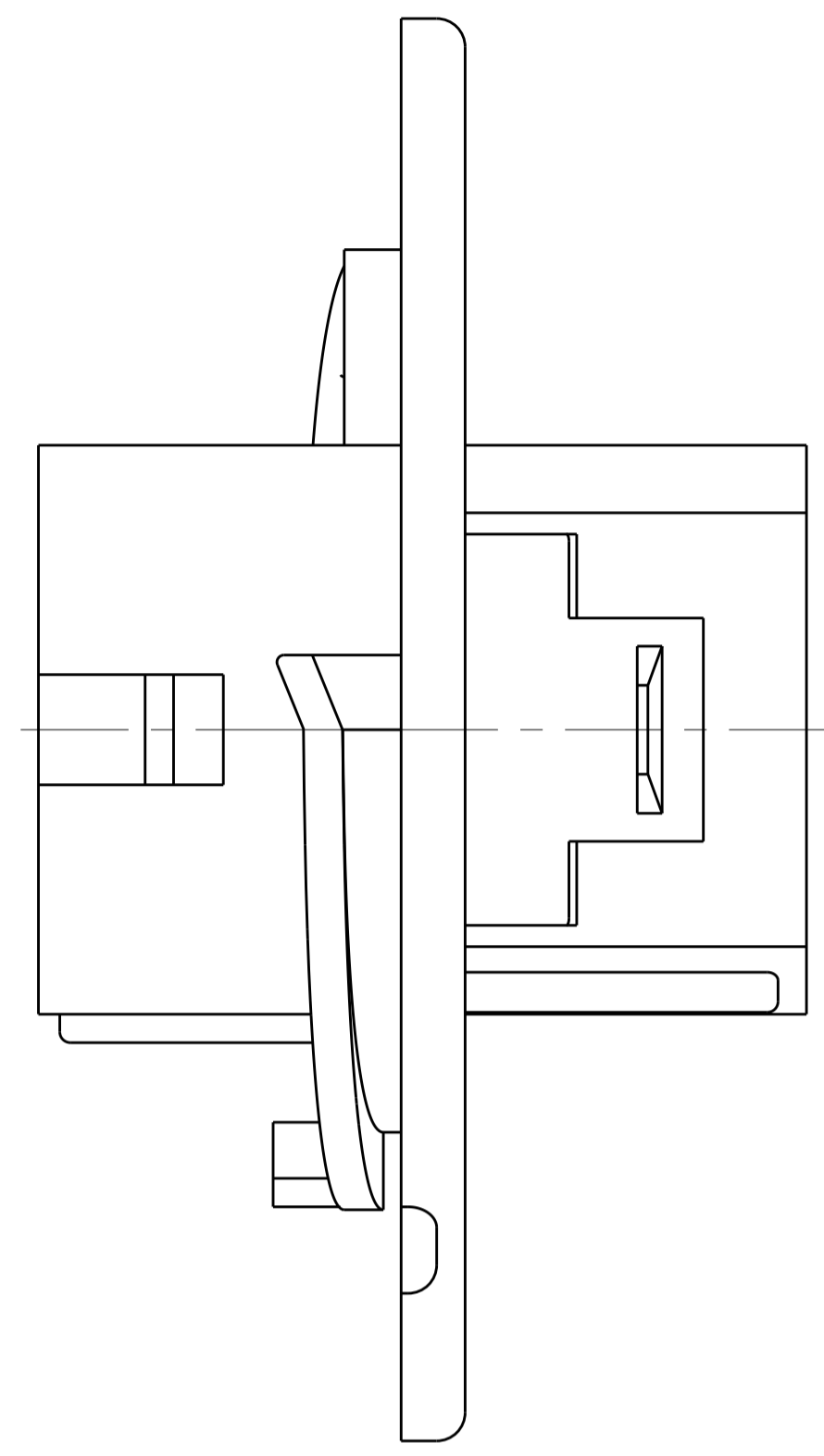
LOC	DIST	REVISIONS			
P	LTN	DESCRIPTION	DATE	DMN	APVD
	A2	REVISED PER ECR-17-015922	07NOV2017	BDA	KR



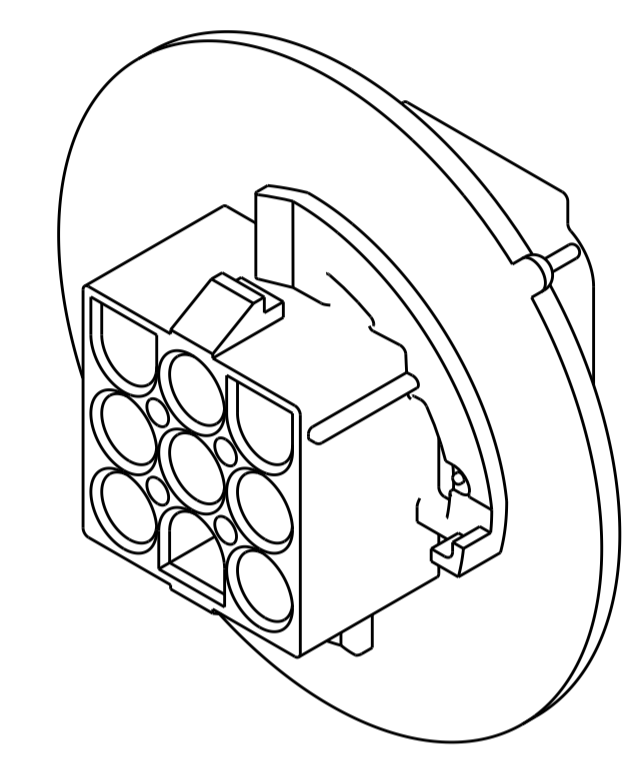
RECOMMENDED CUT OUT



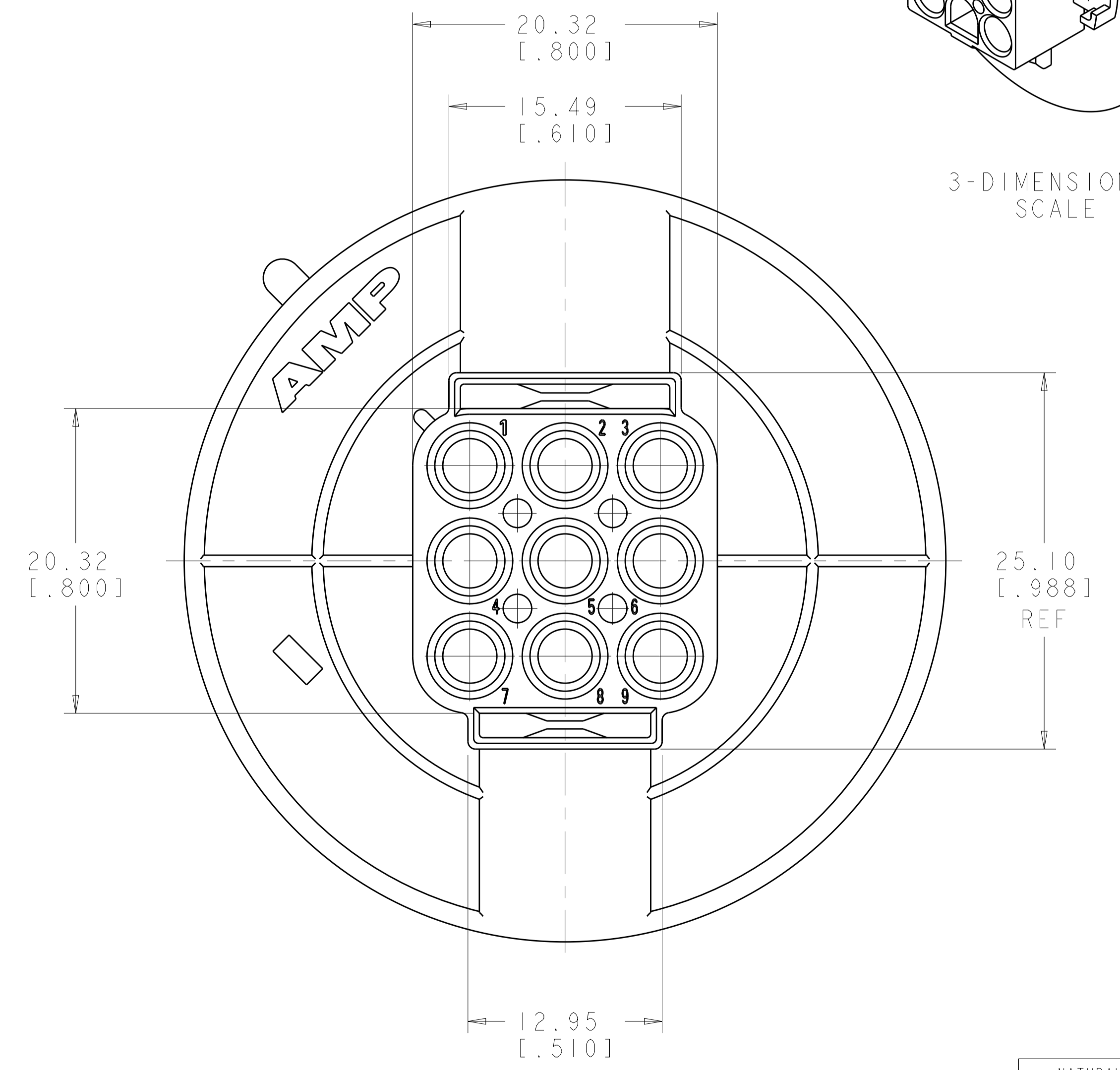
ONE OF 5 CORE-OUTS



1. MATES WITH APPROPRIATE UNIVERSAL MATE-N-LOK II™ PLUG.
2. RECOMMENDED PANEL THICKNESS 0.76 - 2.29 [.030 - .090].
3. PANEL MUST BE PUNCHED SO THAT THE HOUSING ENTERS THE PANEL IN THE SAME DIRECTION AS THE PUNCH.
4. DIMENSIONS SHOWN REPRESENT PRODUCT IN DRY, AS MOLDED, CONDITION. ADDITIONAL 2% GROWTH DUE TO SUBSEQUENT MOISTURE ABSORPTION MAY OCCUR AND SHOULD BE ACCOUNTED FOR.
5. FUNCTIONAL PART REQUIRES APPROPRIATE CONTACTS AND 2029270-1



3-DIMENSIONAL MODEL
SCALE 2:1



NATURAL	2029368-1
COLOR	PART NUMBER

THIS DRAWING IS A CONTROLLED DOCUMENT.		DMN	RAGHAVENDRA	16 JUN 2011
DIMENSIONS: mm [INCHES]		CHK	MICHELLE TOM	16 JUN 2011
TOLERANCES UNLESS OTHERWISE SPECIFIED:		APVD	MICHELLE TOM	16 JUN 2011
0 PLC	±	PRODUCT SPEC		
1 PLC	±	APPLICATION SPEC		
2 PLC	±0.511(.020)	SIZE		
3 PLC	±	CAGE CODE		
4 PLC	±	DRAWING NO		
ANGLES	±	RESTRICTED TO		
MATERIAL	FINISH	WEIGHT		
		A100779C=2029368		
		Customer Drawing		
		SCALE	2:1	SHEET 1 OF 1
		REV A2		