

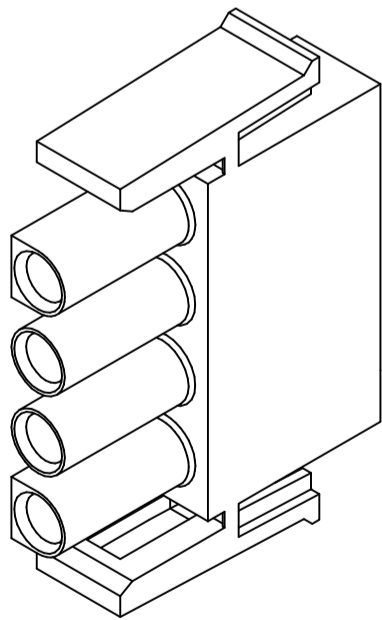
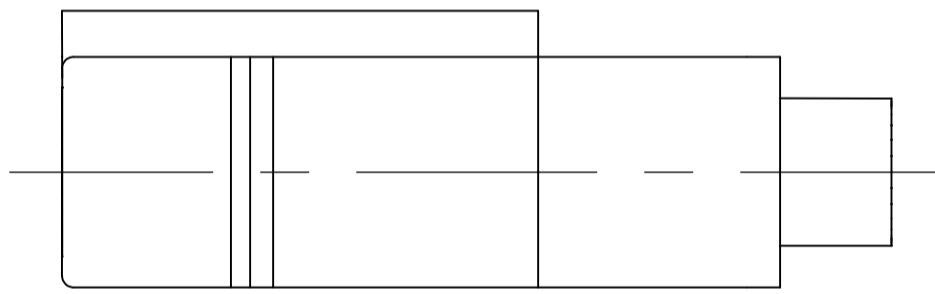
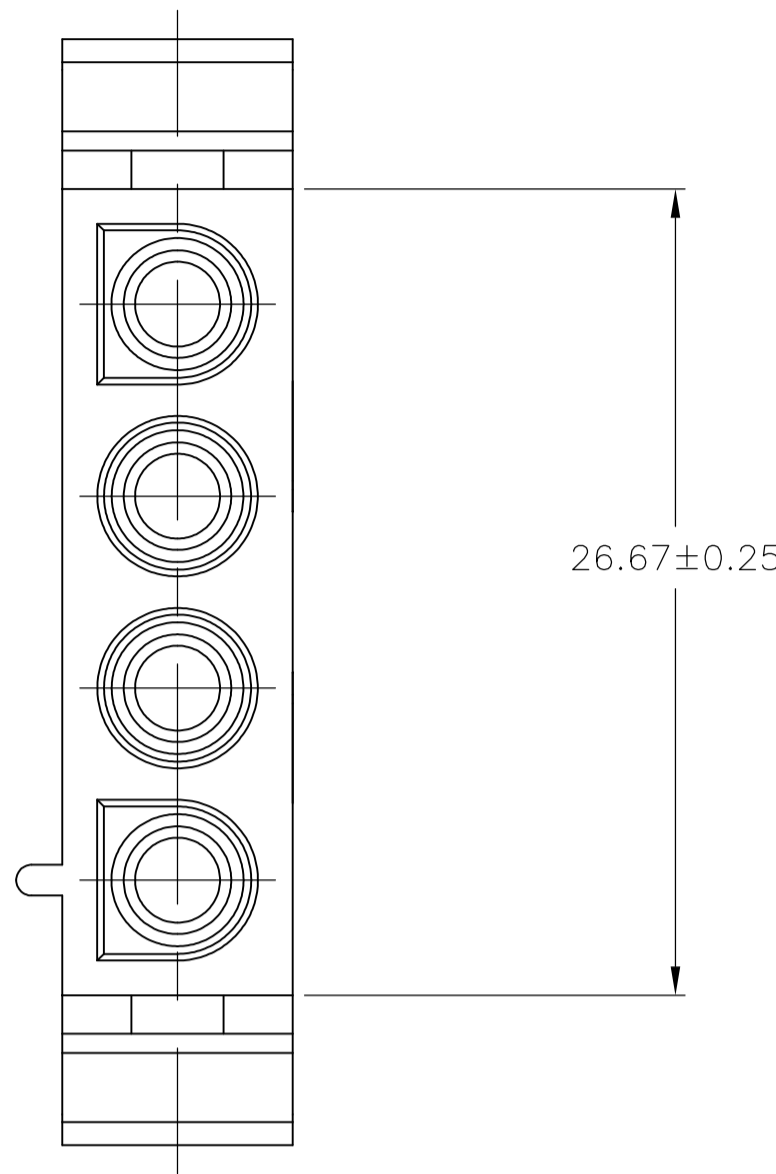
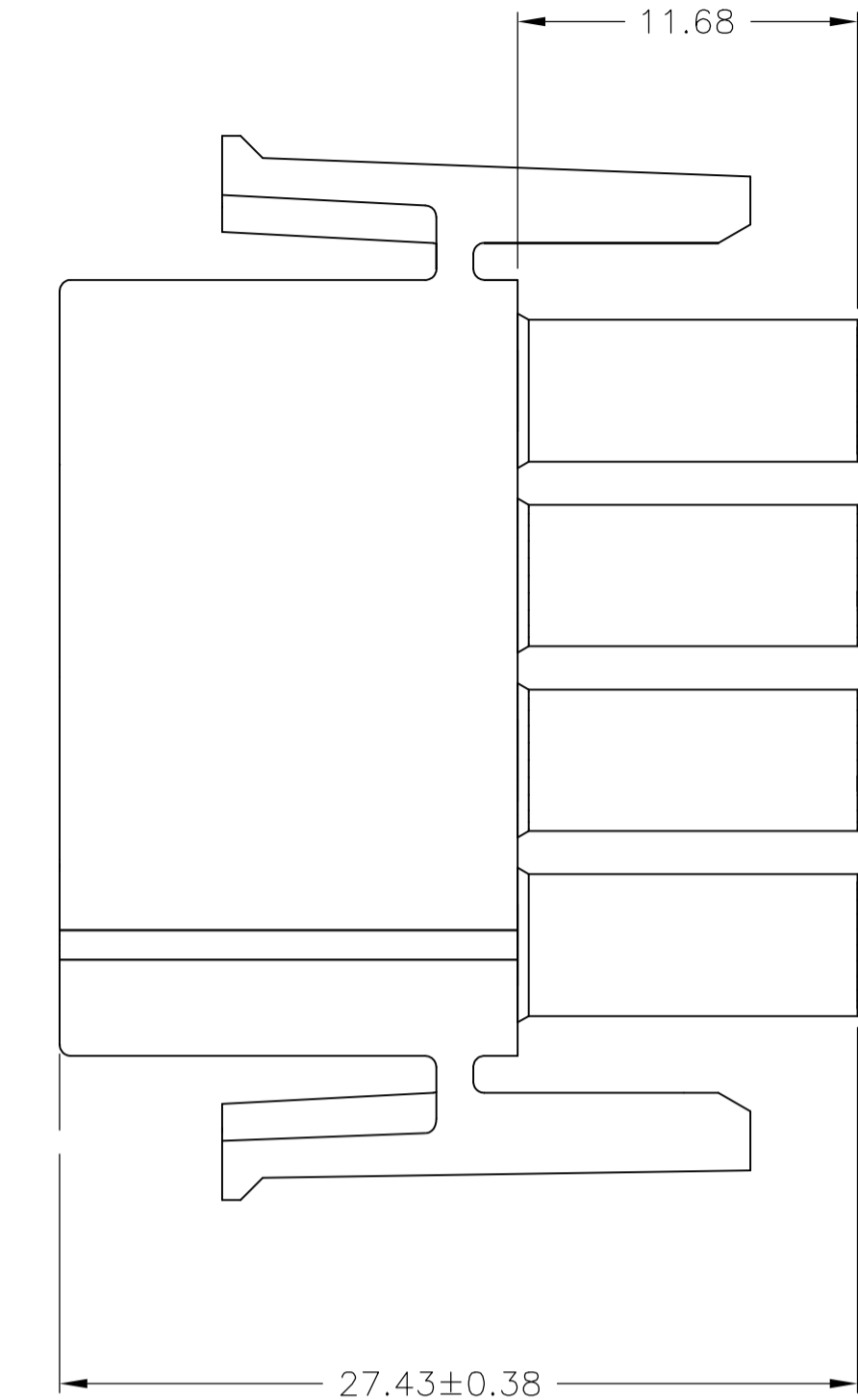
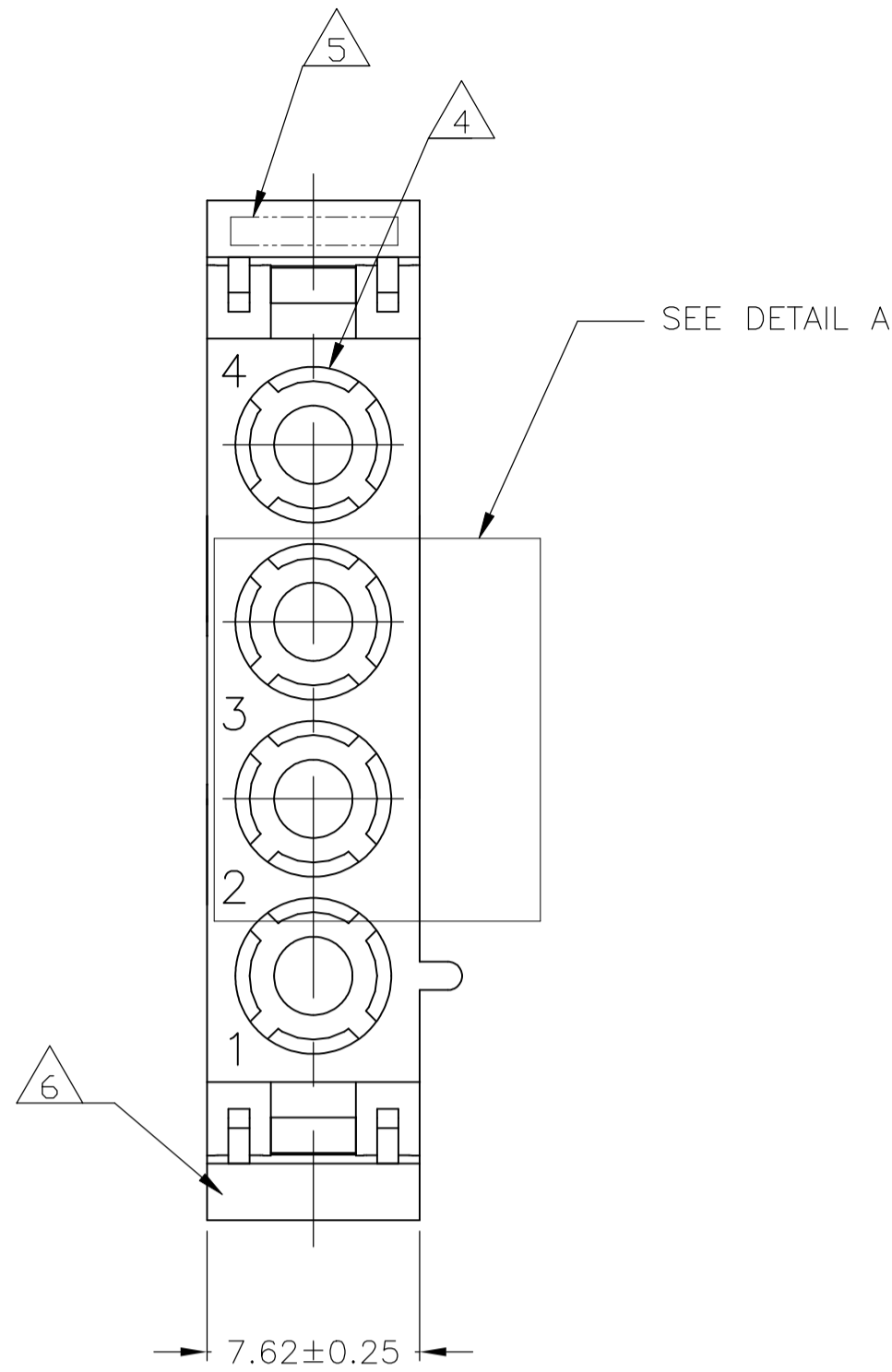
LOC		DIST		REVISIONS				
P	F	L	TR	DESCRIPTION	DATE	DWN	APVD	
	3			REVISED PER ECR-17-015922	10NOV2017	BDA	KR	

D

C

B

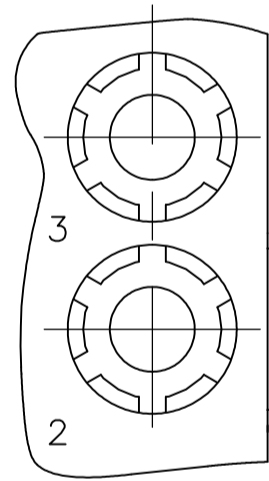
A



3-DIMENSIONAL MODEL
NTS


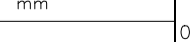
NOTES:

- MATES WITH APPROPRIATE UNIVERSAL MATE-N-LOK™ CAP OR HEADER.
 - SMALL NICKS ARE PERMITTED ON THE CIRCUIT TOWERS WHICH COULD INCREASE THE INITIAL HOUSING MATING FORCE BY UP TO 4.4 NEWTONS [1.0 LBS]. NO INDIVIDUAL NICKED TOWER SHALL INCREASE THIS FORCE BY OVER 2.2 NEWTONS [.5 LBS].
 - DIMENSIONS SHOWN REPRESENT PRODUCT IN DRY, AS MOLDED, CONDITION. ADDITIONAL 2% GROWTH DUE TO SUBSEQUENT MOISTURE ABSORPTION MAY OCCUR AND SHOULD BE ACCOUNTED FOR.
- △4 FOUR RIBS EQUALLY SPACED, NO SPECIFIC ORIENTATION. SIX RIBS EQUALLY SPACED, NO SPECIFIC ORIENTATION, OPTIONAL.
- △5 TRADEMARK LOCATION (AMP OR TYCO).
- △6 MANUFACTURING LOCATION ID (OPTIONAL).
- △7 PRELIMINARY — NOT FOR PRODUCTION



DETAIL A △4
OPTIONAL CONSTRUCTION

NATURAL	△7	1-2029351-0
COLOR		PART NUMBER

THIS DRAWING IS A CONTROLLED DOCUMENT.			DWN J.R. RUTH	08DEC10	 Tyco Electronics Corporation Harrisburg, PA 17105-3608			
			CHK TOM MICHELUTTI	08DEC10				
DIMENSIONS: mm		TOLERANCES, UNLESS OTHERWISE SPECIFIED:		APVD TOM MICHELUTTI	08DEC10	NAME	PLUG, 4 CIRCUIT, UNIVERSAL MATE-N-LOK(TM)	
		0 PLC ± —		PRODUCT SPEC		SIZE A1		
		1 PLC ± —		APPLICATION SPEC				
		2 PLC ± 0.13						
		3 PLC ± —						
		4 PLC ± —						
ANGLES		± 0°30'				RESTRICTED TO		
FINISH		—		WEIGHT		DRAWING NO 00779		
MATERIAL NYLON, UL 94V-2				CUSTOMER DRAWING		REVISED 2029351		
						SCALE 4:1		
						SHEET 1 OF 1		
						REV 3		