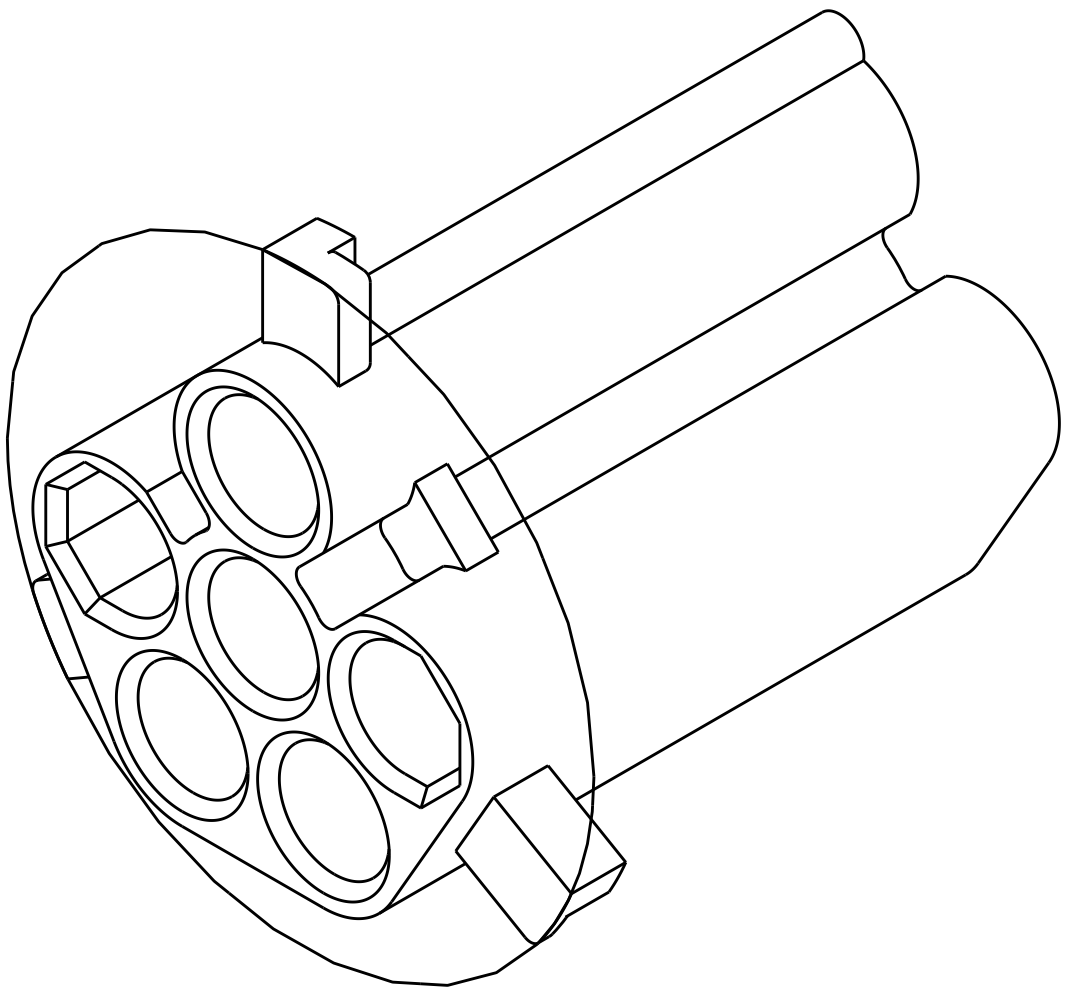
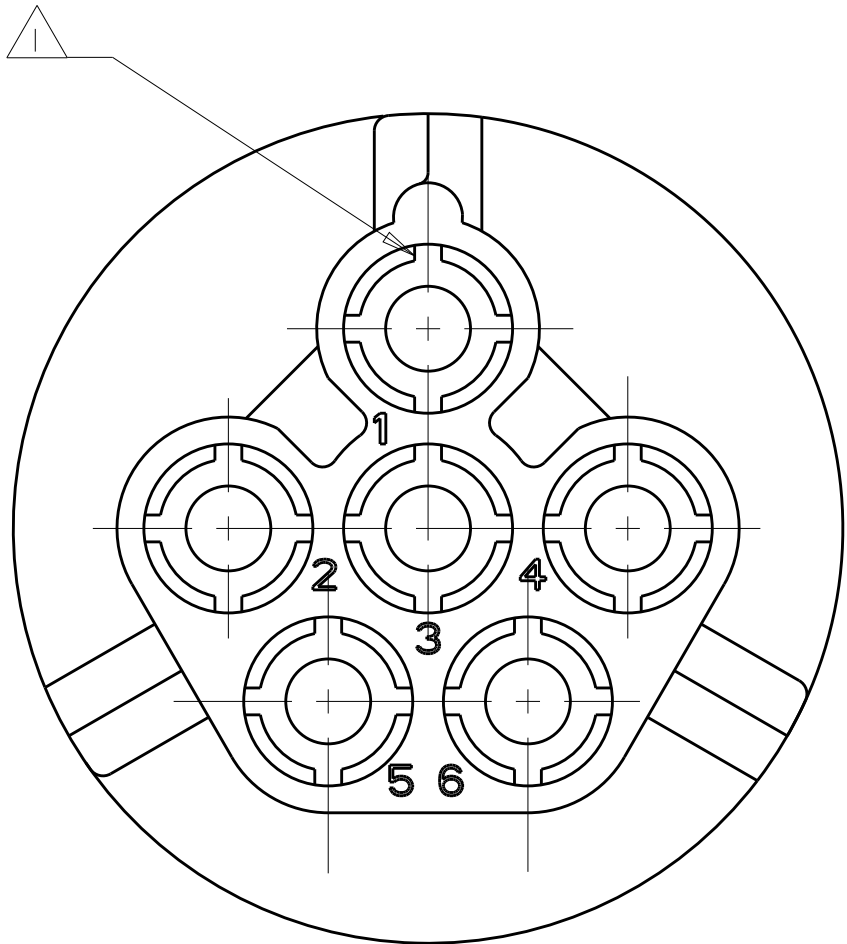
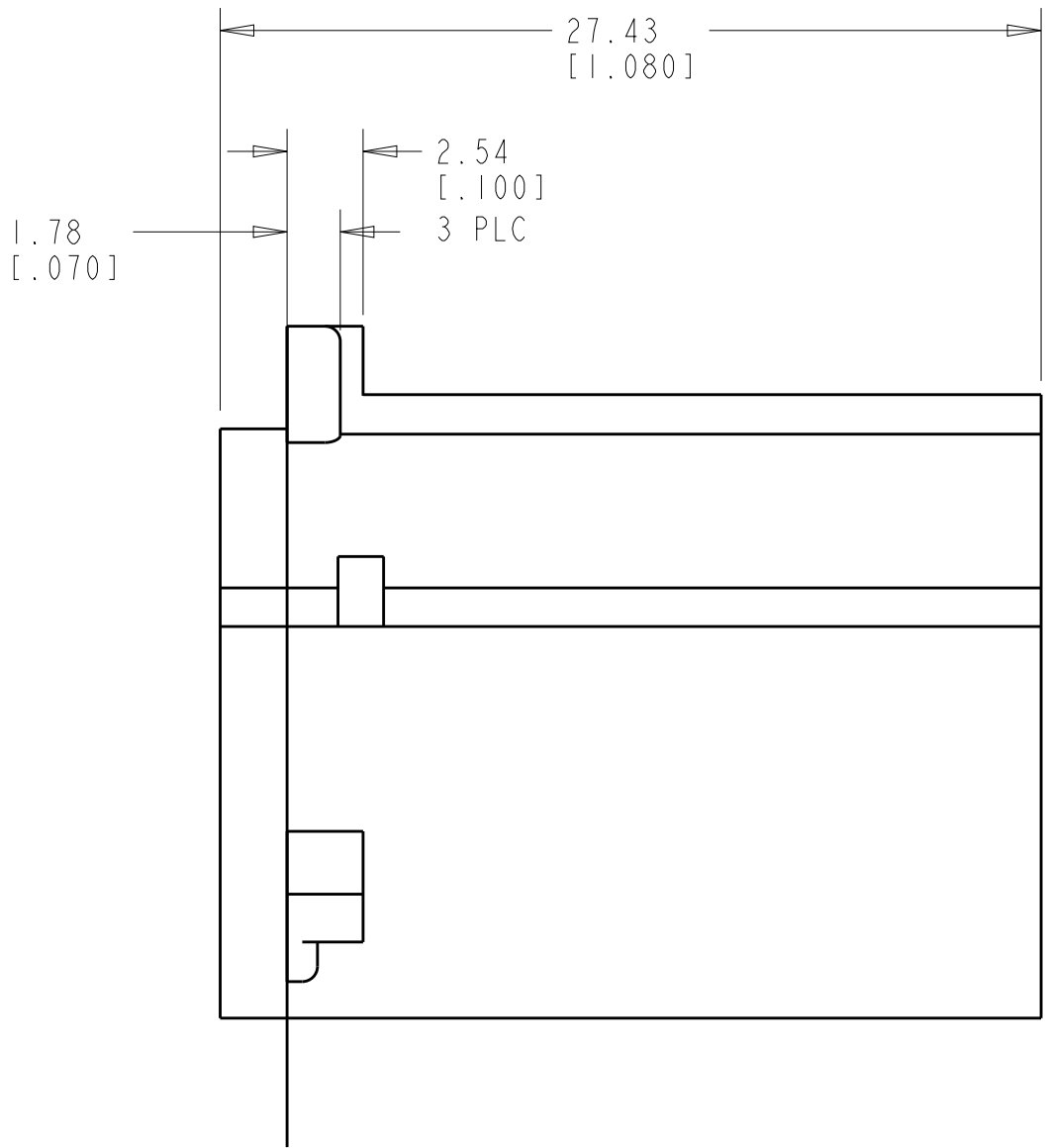
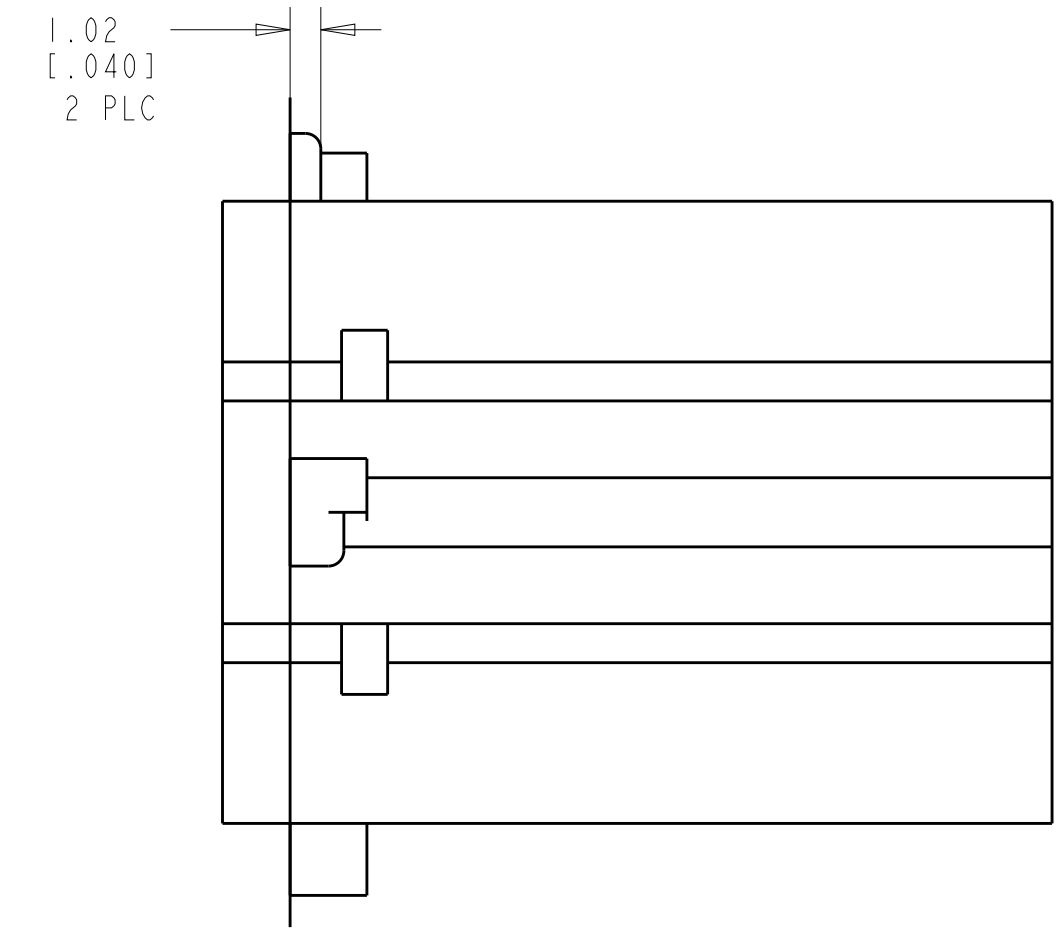
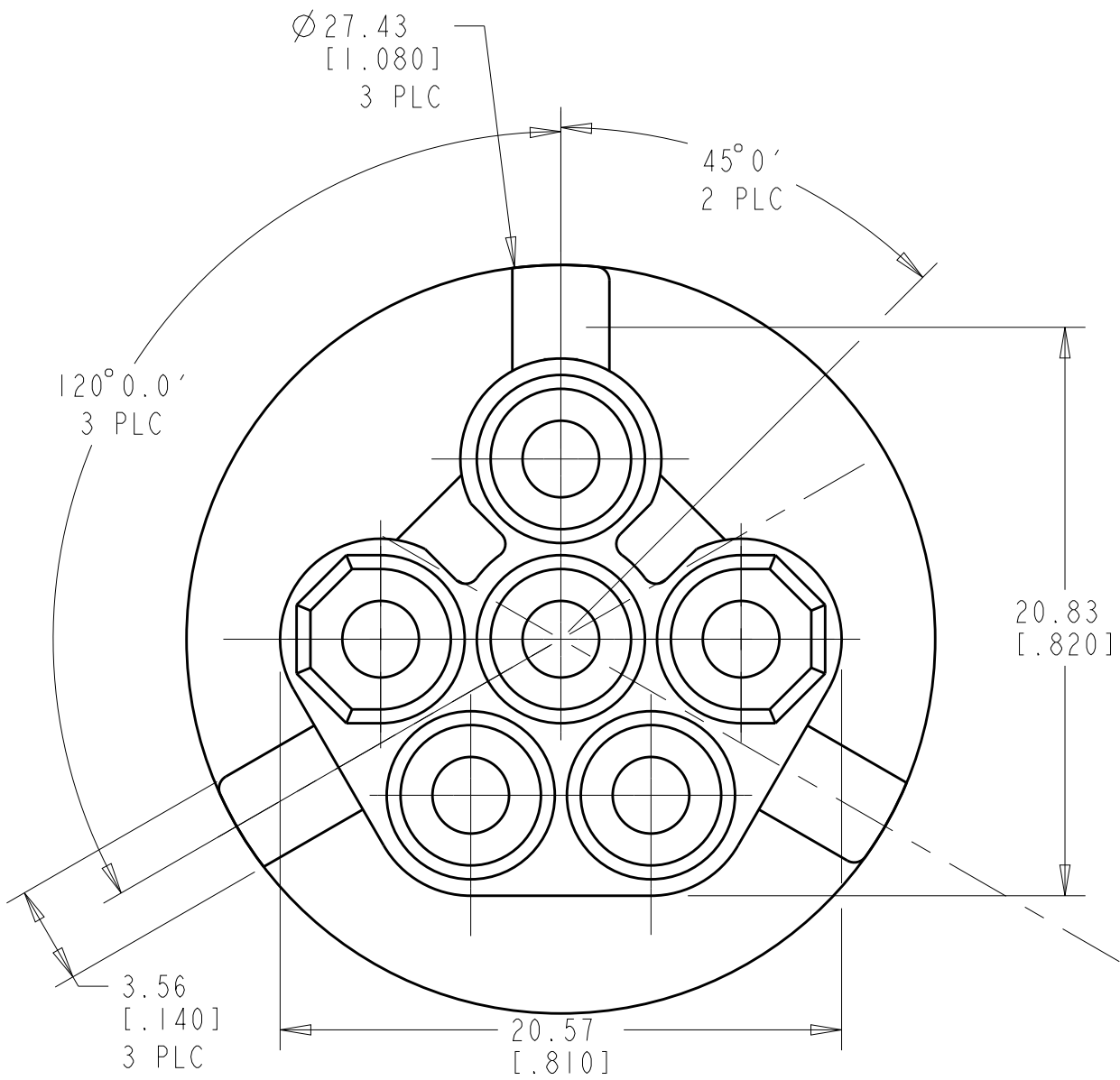
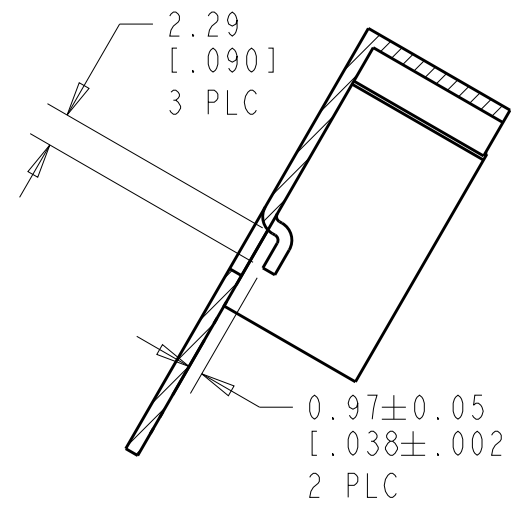


REVISIONS					
P.	LTR	DESCRIPTION	DATE	DWN	APVD
	2	REVISED PER ECR-17-015922	06NOV2017	BDA	KR

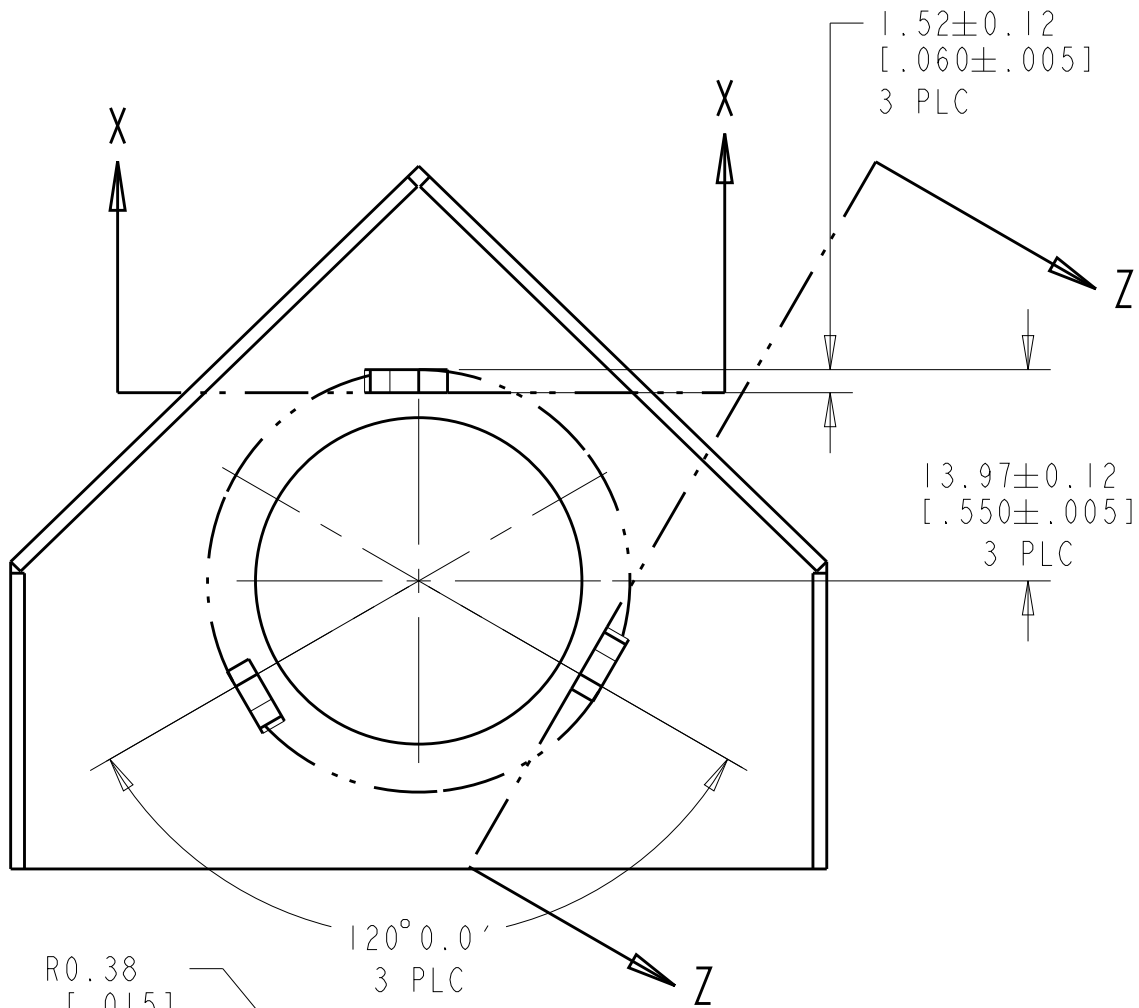
- 1 FOUR RIBS EQUALLY SPACED, NO SPECIFIC ORIENTATION.
- 2 PRELIMINARY - NOT FOR PRODUCTION
- 3 DIMENSIONS SHOWN REPRESENT PRODUCT IN DRY, AS MOLDED, CONDITION. ADDITIONAL 2% GROWTH DUE TO SUBSEQUENT MOISTURE ABSORPTION MAY OCCUR AND SHOULD BE ACCOUNTED FOR.



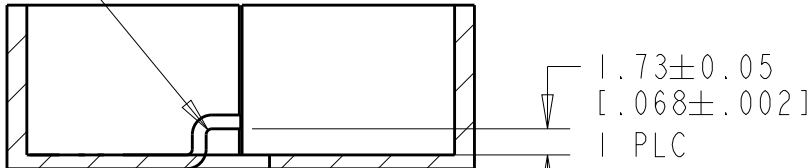
3-DIMENSIONAL MODEL
SCALE 4:1



SECTION Z-Z



R0.38
[1.015]
TYP



SECTION X-X

RECOMMENDED PANEL DESIGN

THIS DRAWING IS A CONTROLLED DOCUMENT.		DWN: J. R. RUTH 07JUN10	0.218 IN ³ NATURAL		2029320-1
DIMENSIONS: mm [INCHES]		CHK: MIKE SARVER 07JUN10	VOLUME	COLOR	PART NUMBER
TOLERANCES UNLESS OTHERWISE SPECIFIED:		APVD: BOB BENDORF 07JUN10			
0 PLC ±		PRODUCT SPEC			
1 PLC ±		APPLICATION SPEC			
2 PLC ±0.13 (.005)					
3 PLC ±					
4 PLC ±					
ANGLES ±					
FINISH					
MATERIAL NYLON, UL 94V-2		WEIGHT			
		CUSTOMER DRAWING			
NAME CAP, CIRCULAR, 6 CIRCUIT, PANEL MOUNT UNIVERSAL MATE-N-LOK (TM)			SIZE A1	CAGE CODE 00779	DRAWING NO. 2029320
			SCALE 2:1	SHEET 1 OF 1	REV 2