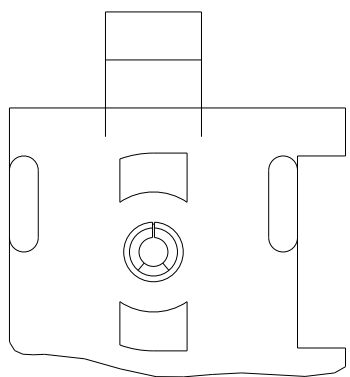
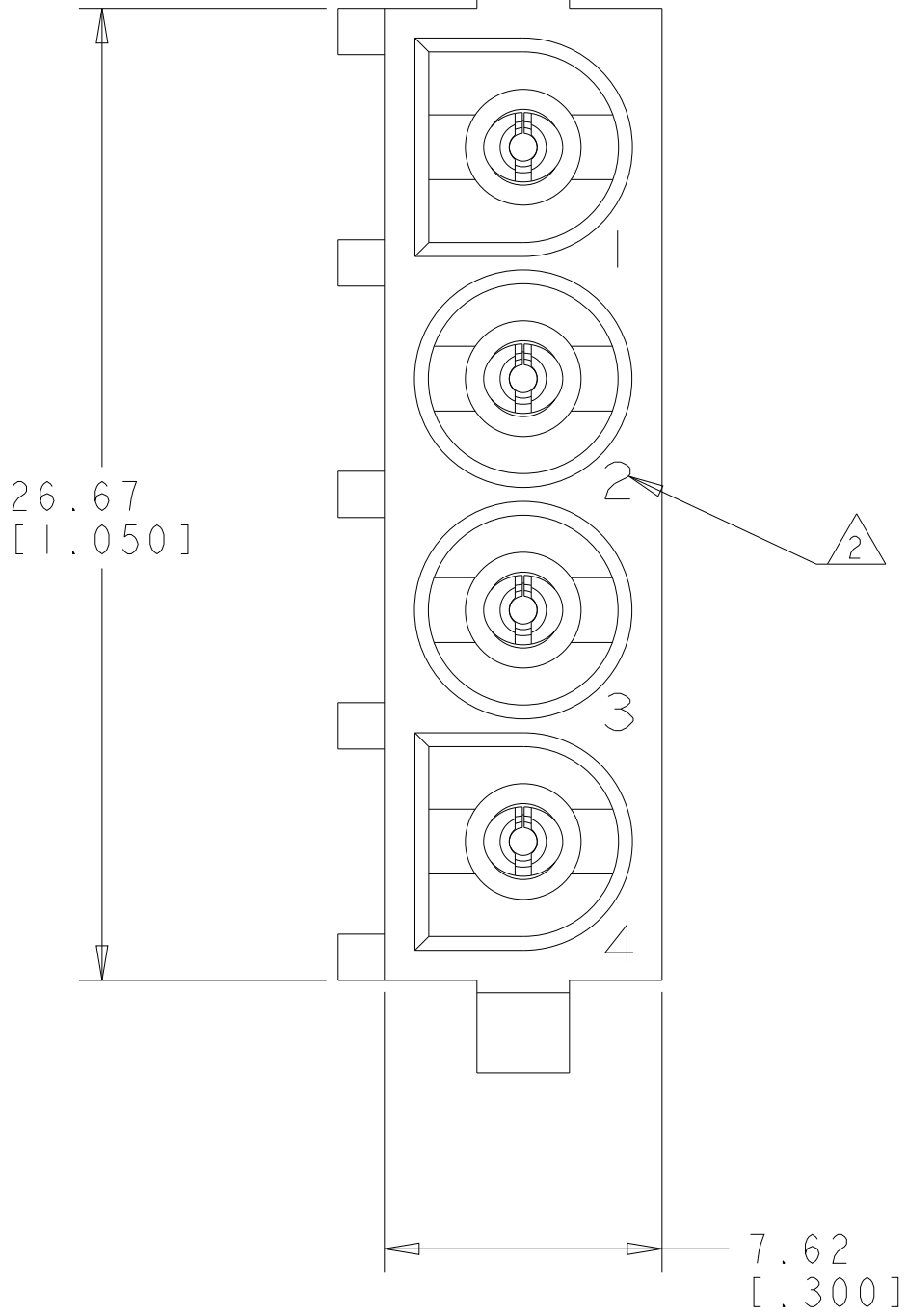
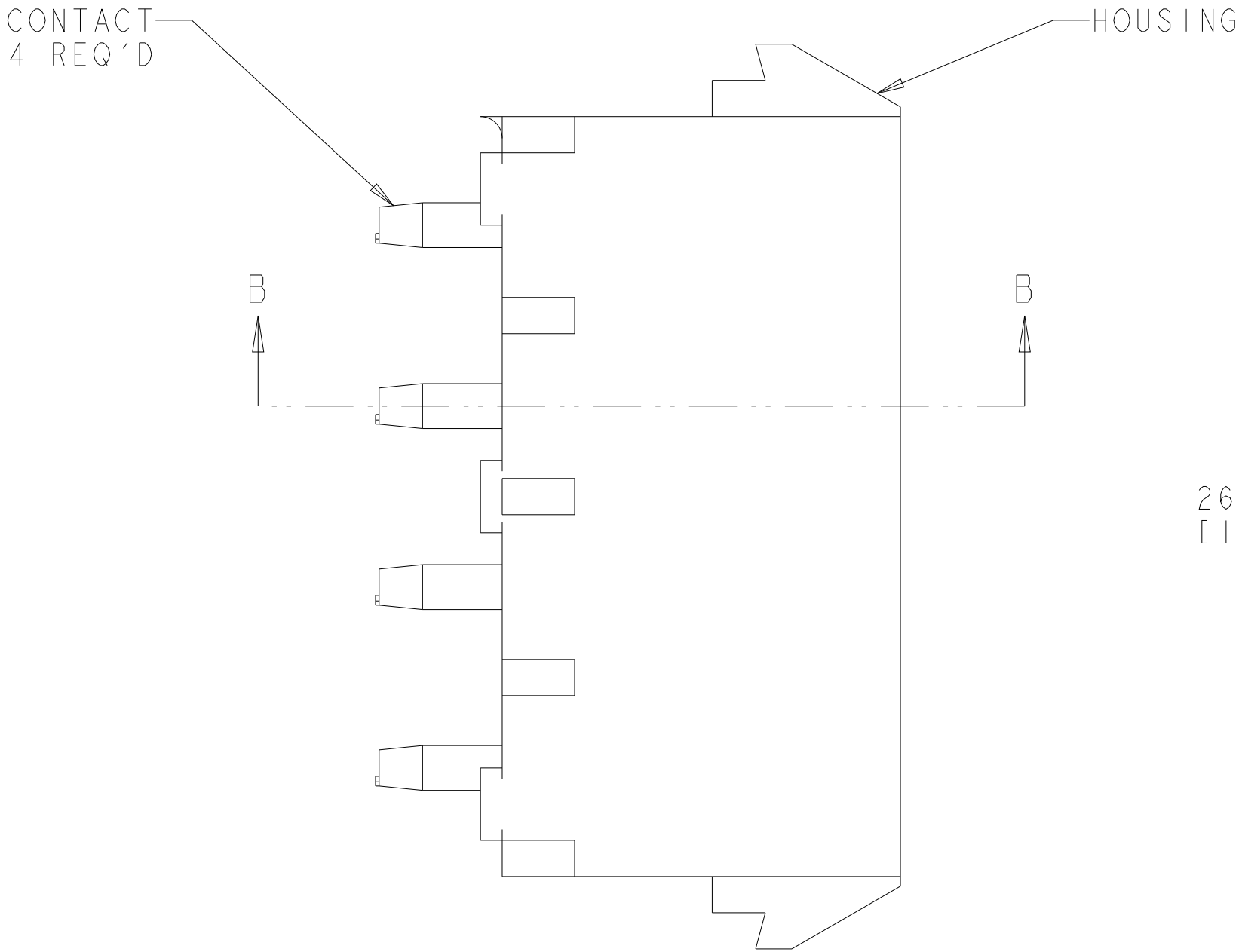
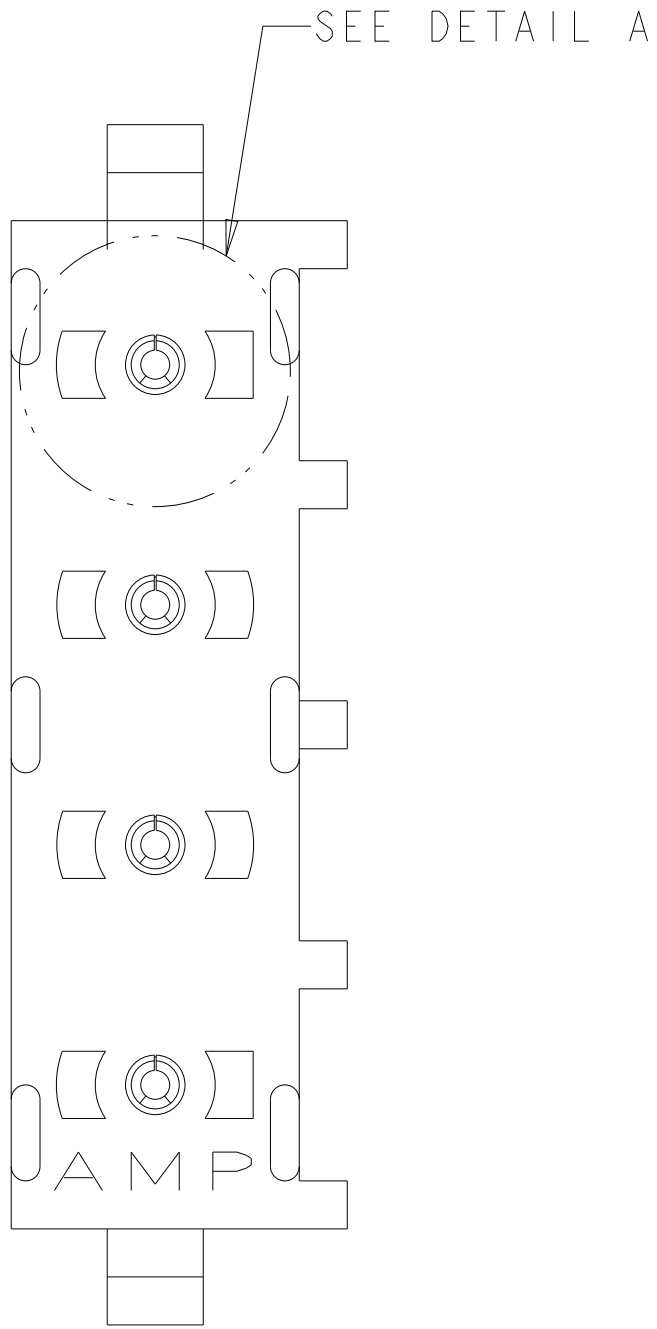
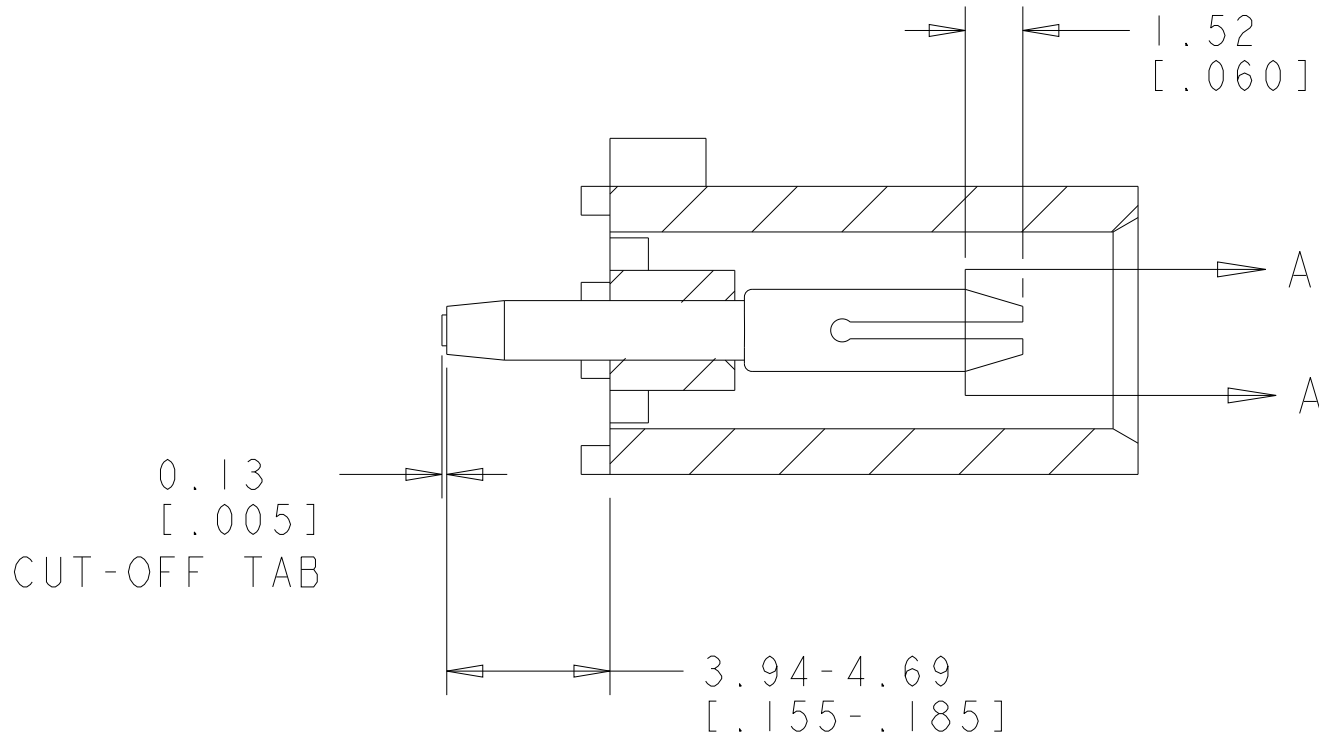


LOC		DIST		REVISIONS					
CM	00	P	LTR	DESCRIPTION		DATE	DWN	APVD	
		A		WR-08-67		04DEC2008	KW	DC	
		A1		REVISED PER ECR-21-119230		08NOV2021	SS	VS	

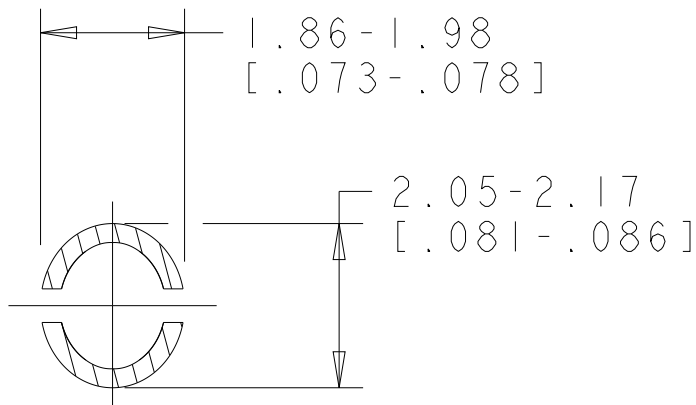
1. PARTS COMPLY TO TYCO ELECTRONICS SOLDERABILITY SPEC. 109-11-3.
2. CIRCUIT IDENTIFICATION CHARACTERS ARE ADJACENT TO THE INDICATED CAVITIES, BUT LOCATION AND ORIENTATION MAY DIFFER FROM PRINT.
3. DRAIN HOLES LOCATED AS SHOWN. OPTIONAL CONSTRUCTION - ALL DRAIN HOLES TURNED 90° AS SHOWN IN DETAIL A.
4. DIMENSIONS SHOWN REPRESENT PRODUCT IN DRY CONDITION. ADDITIONAL 2% GROWTH DUE TO END USE LOCATION MOISTURE ABSORPTION MAY OCCUR AND SHOULD BE ACCOUNTED FOR.



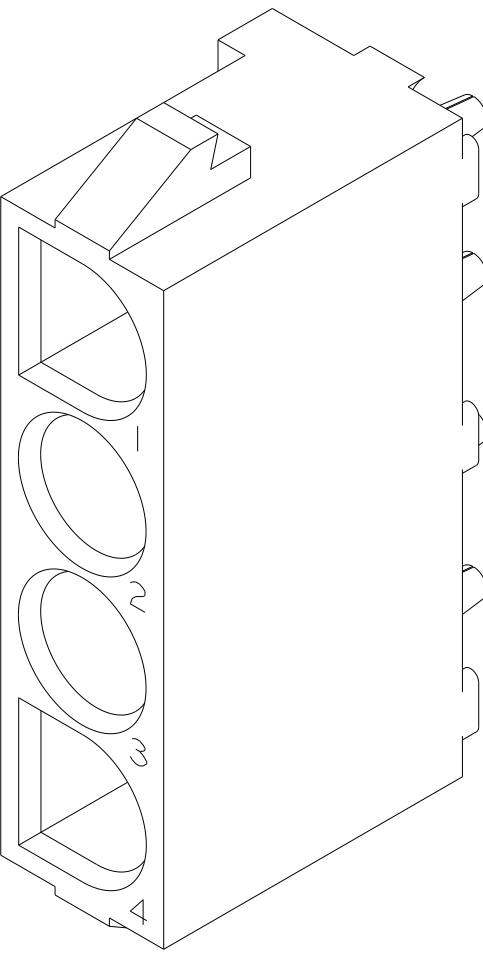
DETAIL A
OPTIONAL CONSTRUCTION 3



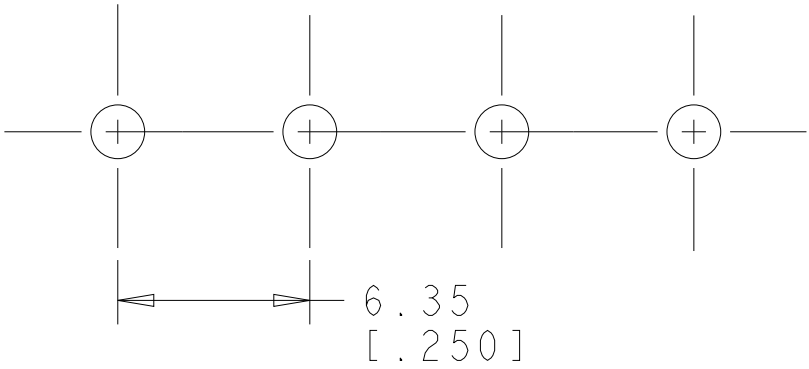
SECTION B-B



SECTION A-A
SCALE 10:1

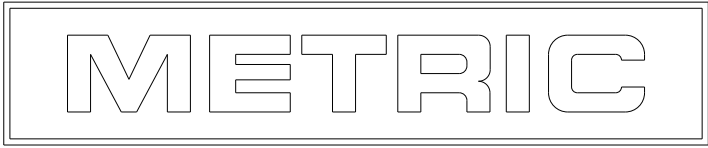


3 DIMENSIONAL MODEL
SCALE 4:1



RECOMMENDED MOUNTING HOLE PATTERN
FOR 1.57 [0.062] THICK P.C. BOARD

PHOSPOR BRONZE, PRE-TIN	NYLON, UL94V-2, BLACK	2029279-1
PIN CONTACT MATERIAL AND FINISH	HOUSING MATERIAL AND COLOR	PART NUMBER



TYPICAL DIMENSIONS FOR CONFORMANCE WITH TYCO ELECTRONICS CORPORATION IT IS THE BUYER'S RESPONSIBILITY TO CONTACT TYCO ELECTRONICS CORPORATION FOR THE LATEST REVISIONS TO THIS DRAWING. THIS DRAWING IS THE PROPERTY OF TYCO ELECTRONICS CORPORATION. IT IS TO BE USED FOR THE LATEST REVISIONS.		DWN K. WHITAKER 04DEC2008	Tyco Electronics Harrisburg, PA 17105-3608		
DIMENSIONS: mm [INCHES]	TOLERANCES UNLESS OTHERWISE SPECIFIED:	CHK D. COLEY 04DEC2008	NAME		
		APVD D. COLEY 04DEC2008	PRODUCT SPEC		
		APPLICATION SPEC			
		WEIGHT			
MATERIAL SEE TABLE		FINISH SEE TABLE			
		CUSTOMER DRAWING			
		SCALE 5:1			
		SHEET 1 OF 1			
		REV A1			