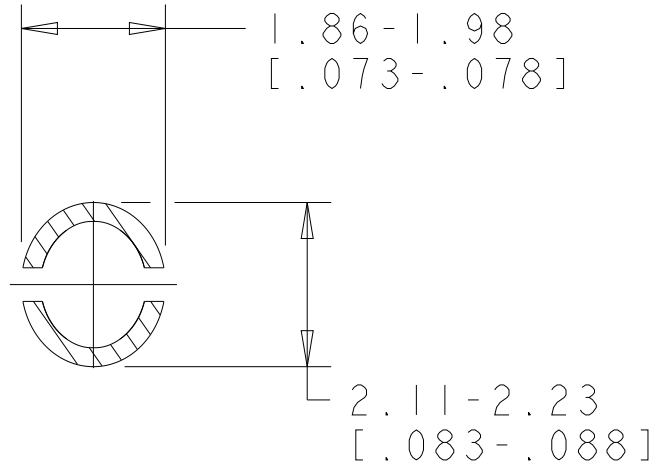
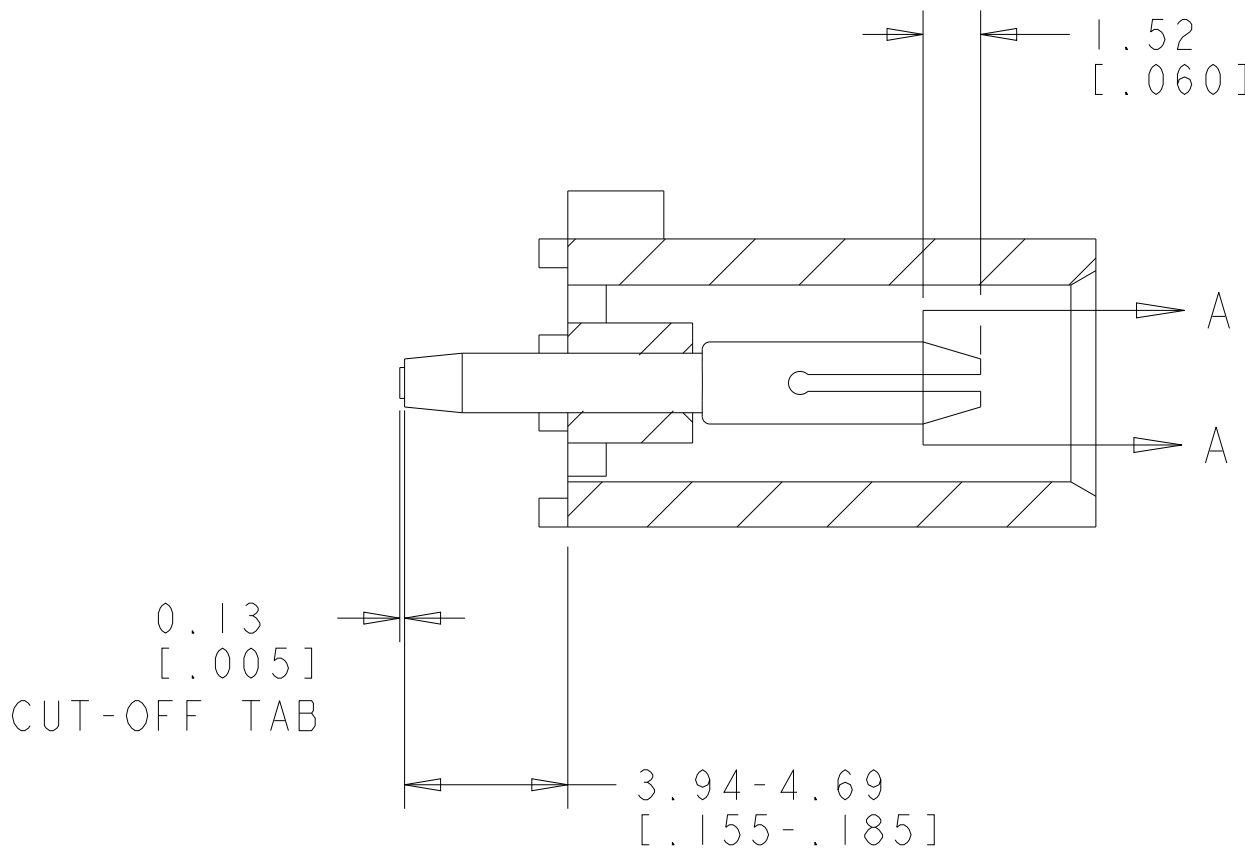
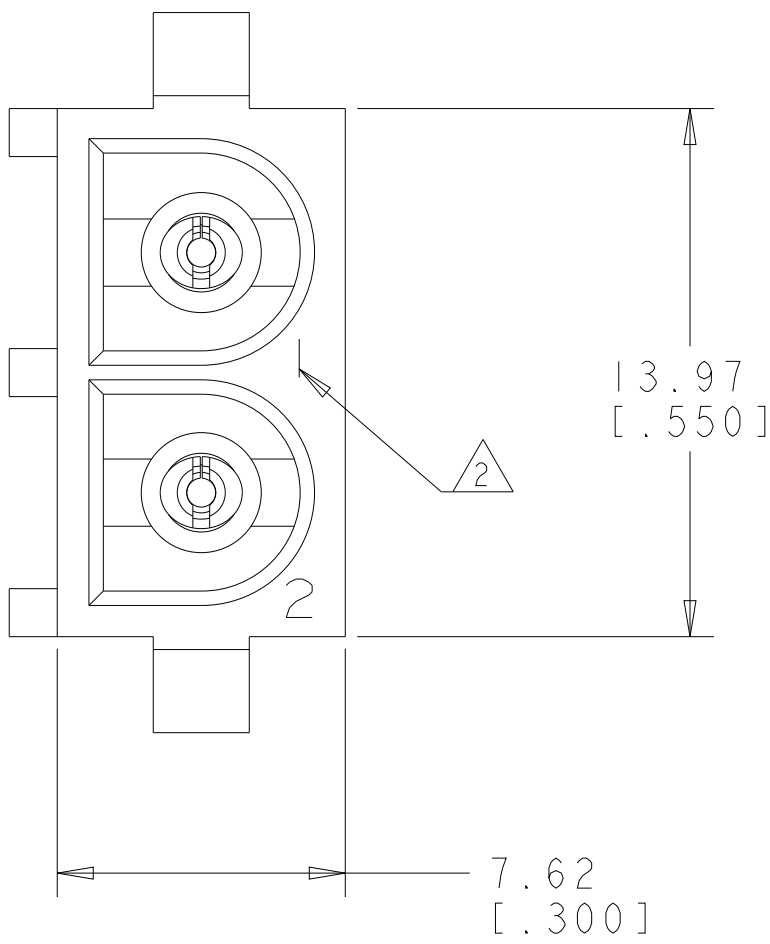
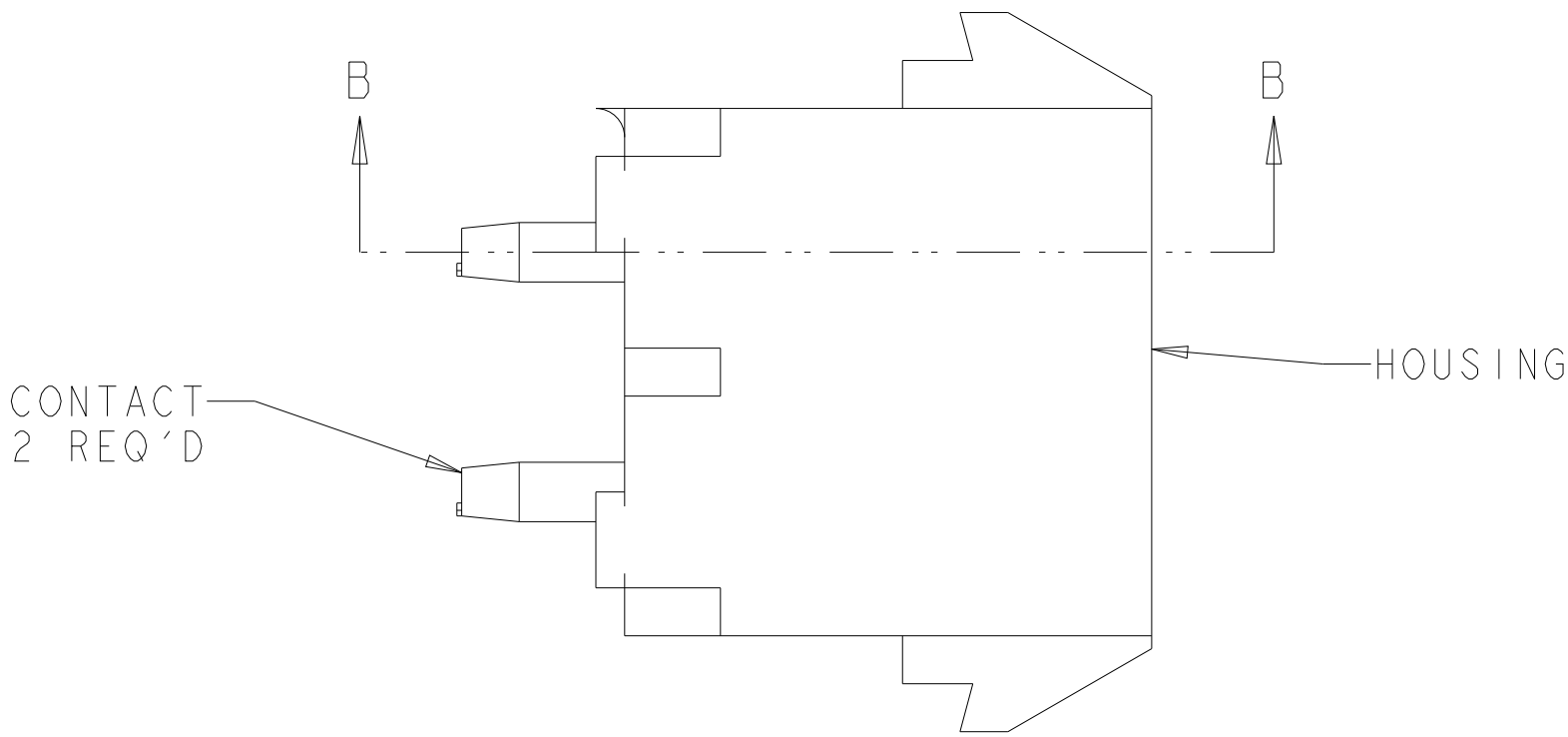
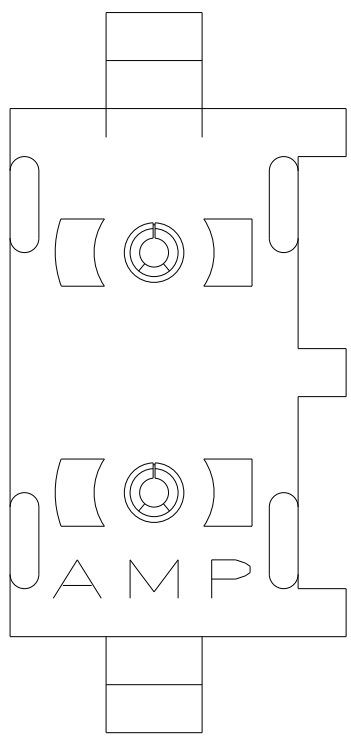


LOC	DIST	REVISIONS					
CM	00	P	LTR	DESCRIPTION	DATE	DWN	APVD
			A	WR-08-67	04DEC2008	KW	DC
			A1	REVISED PER ECR-21-119230	08NOV2021	SS	VS

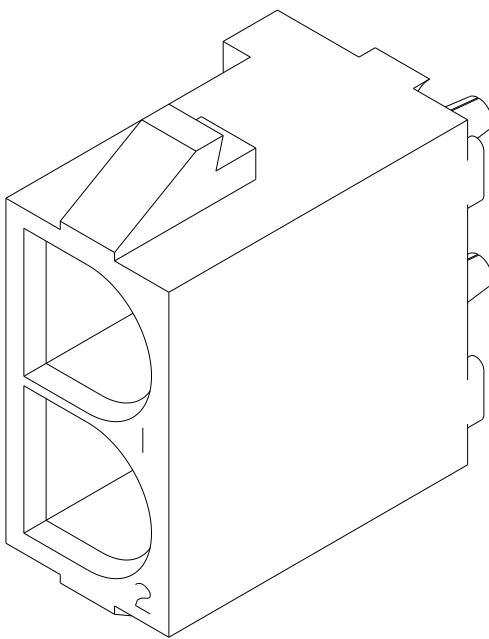
1. PARTS COMPLY TO TYCO ELECTRONICS SOLDERABILITY SPECIFICATION 109-11-3.
- 2

CIRCUIT IDENTIFICATION CHARACTERS ARE ADJACENT TO THE INDICATED CAVITIES, BUT LOCATION AND ORIENTATION MAY DIFFER FROM PRINT.
3. DIMENSIONS SHOWN REPRESENT PRODUCT IN DRY CONDITION. ADDITIONAL 2% GROWTH DUE TO END USE LOCATION MOISTURE ABSORPTION MAY OCCUR AND SHOULD BE ACCOUNTED FOR.

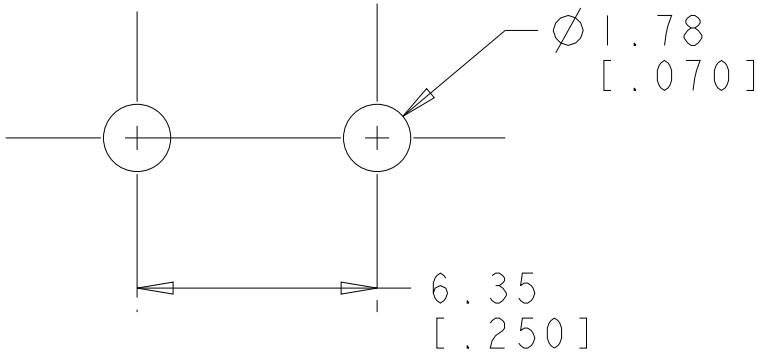


SECTION A-A  
SCALE 10:1



SECTION B-B



3 DIMENSIONAL VIEW  
SCALE 4:1



RECOMMENDED MOUNTING HOLE PATTERN  
FOR 1.57 [.062] THICK P.C. BOARD

PHOSPOR BRONZE, PRE-TIN		NYLON, UL94V-2, BLACK		2029277-1	
PIN CONTACT MATERIAL AND FINISH		HOUSING MATERIAL AND COLOR		PART NUMBER	
<div>THIS DRAWING IS A CONTROLLED DOCUMENT FOR THE ELECTRONIC COMPONENTER IT IS SUBJECT TO CHANGE AND THE CONTROL NUMBERING ORGANIZATION SHOULD BE CONTACTED FOR THE LATEST REVISION</div>		DWN K. WHITAKER 04DEC2008		<div> Tyco Electronics Harrisburg, PA 17105-3608</div>	
		CHK D. COLEY 04DEC2008			
DIMENSIONS: mm[INCHES]		TOLERANCES UNLESS OTHERWISE SPECIFIED:		NAME  PIN HEADER ASSEMBLY, 2 CIRCUIT, UNIVERSAL MATE-N-LOK(TM)	
<div></div>		0 PLC ±" 1 PLC ±" 2 PLC ±0.13(.005) 3 PLC ±" 4 PLC ±" ANGLES ±0° 30'			
		APPLICATION SPEC		SIZE A1	
MATERIAL SEE TABLE		FINISH SEE TABLE		CAGE CODE 00779	
CUSTOMER DRAWING		SCALE 5:1		DRAWING NO C2029277	
		SHEET 1		OF 1	
		REV A			