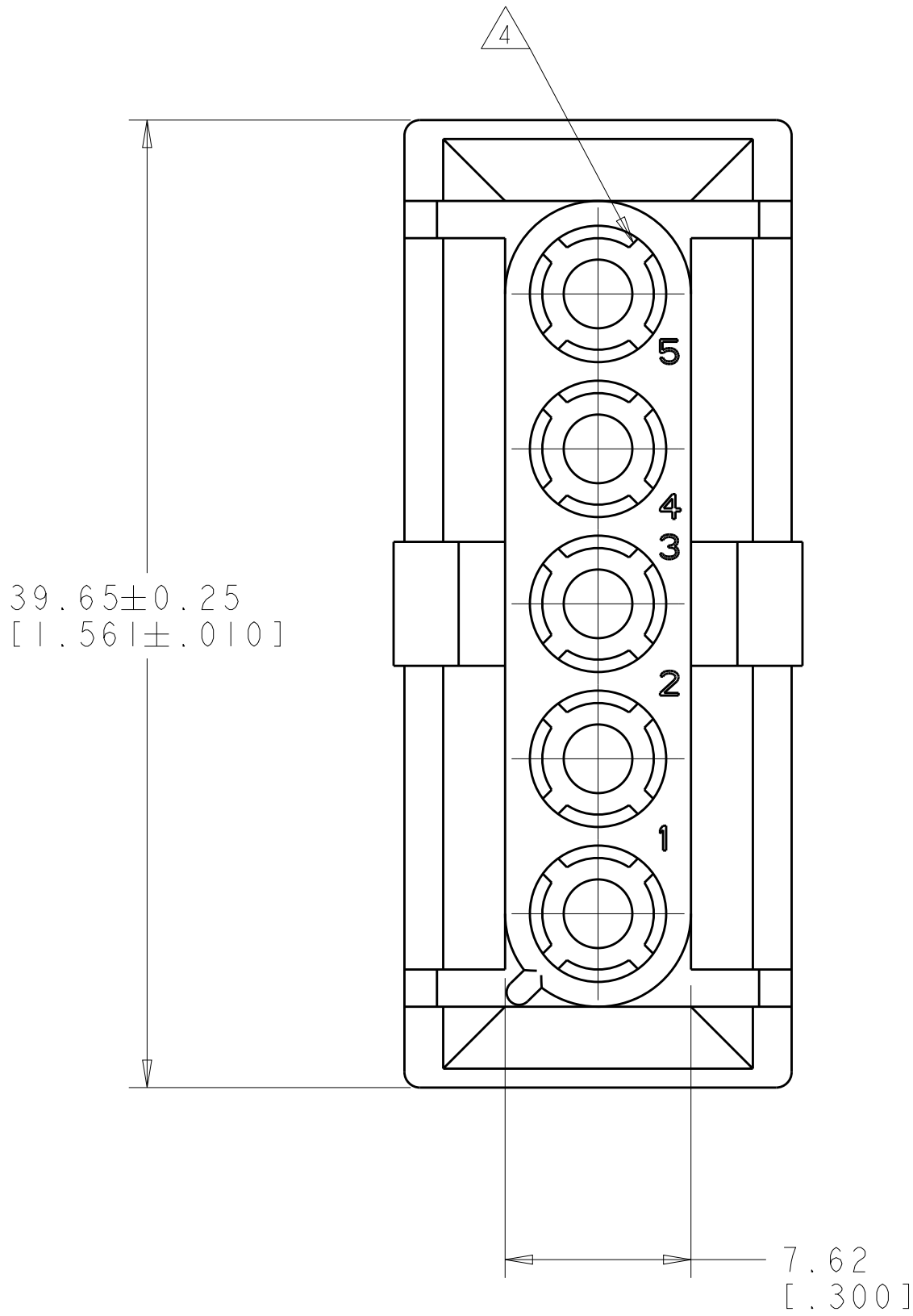
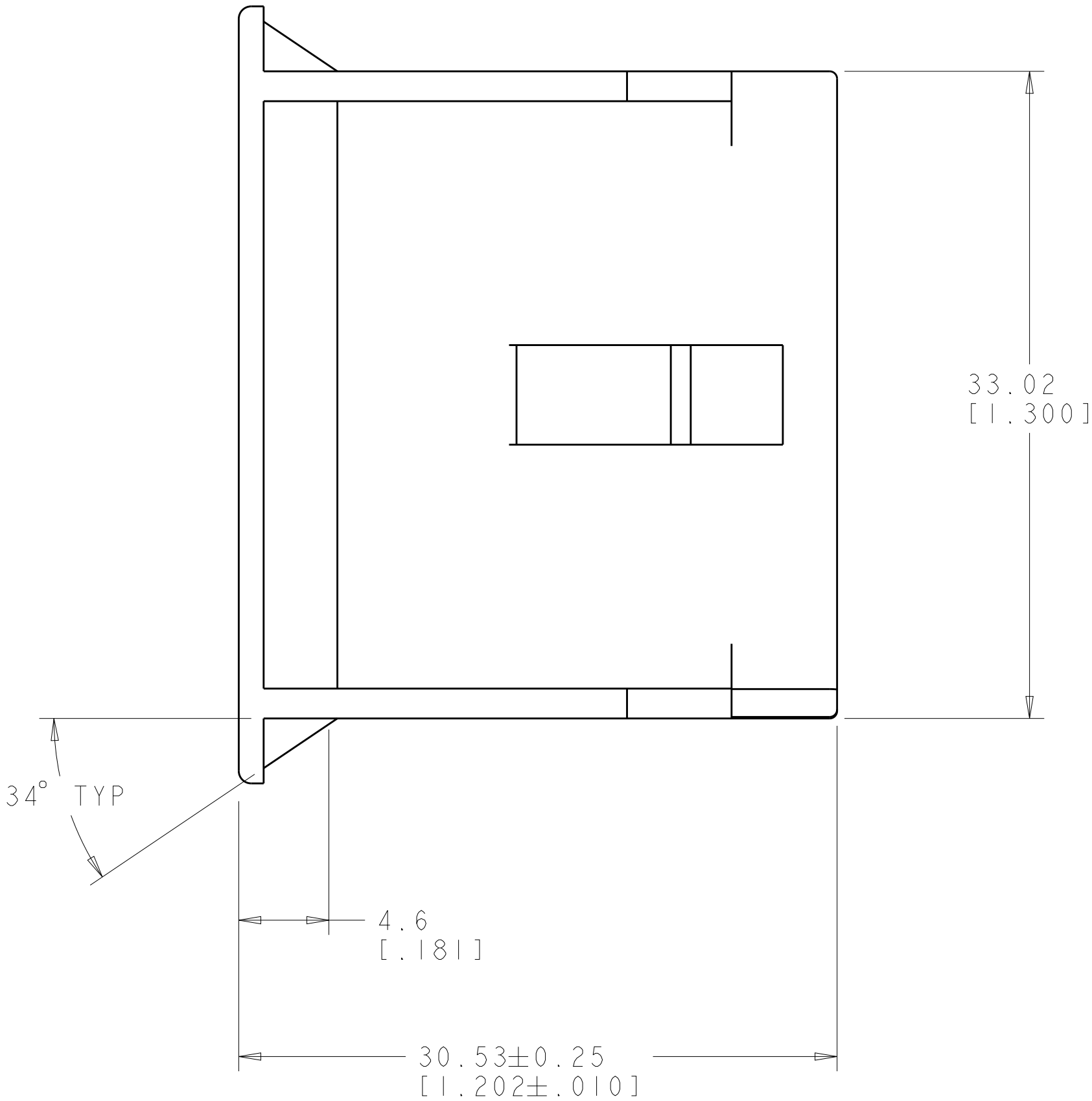
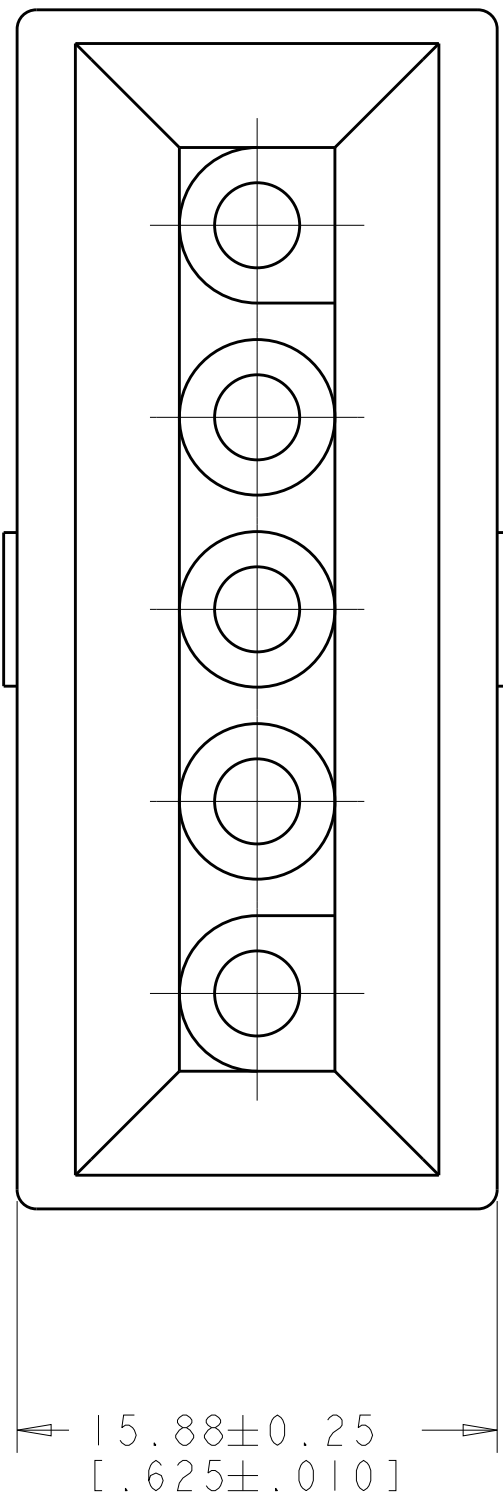
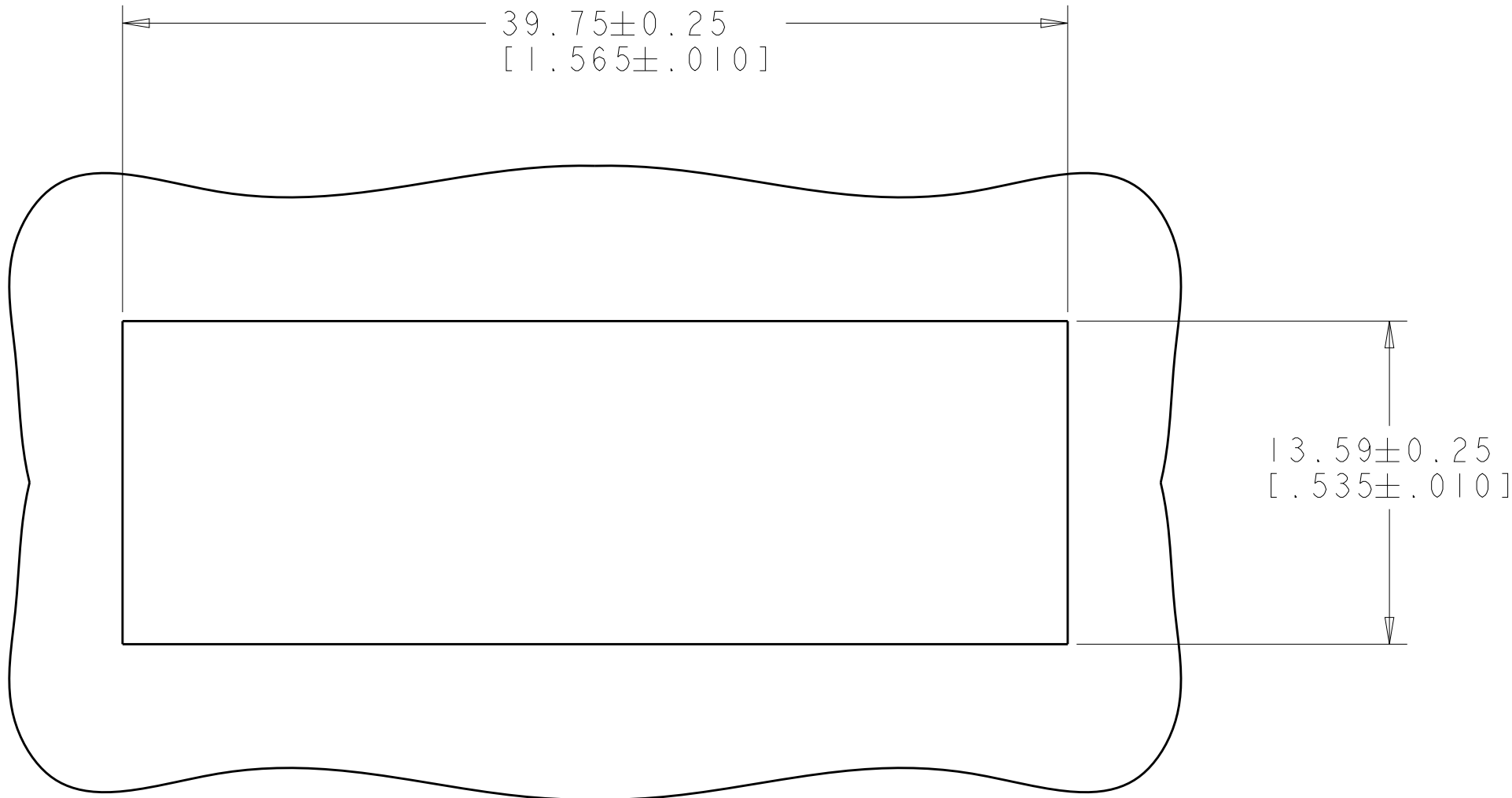
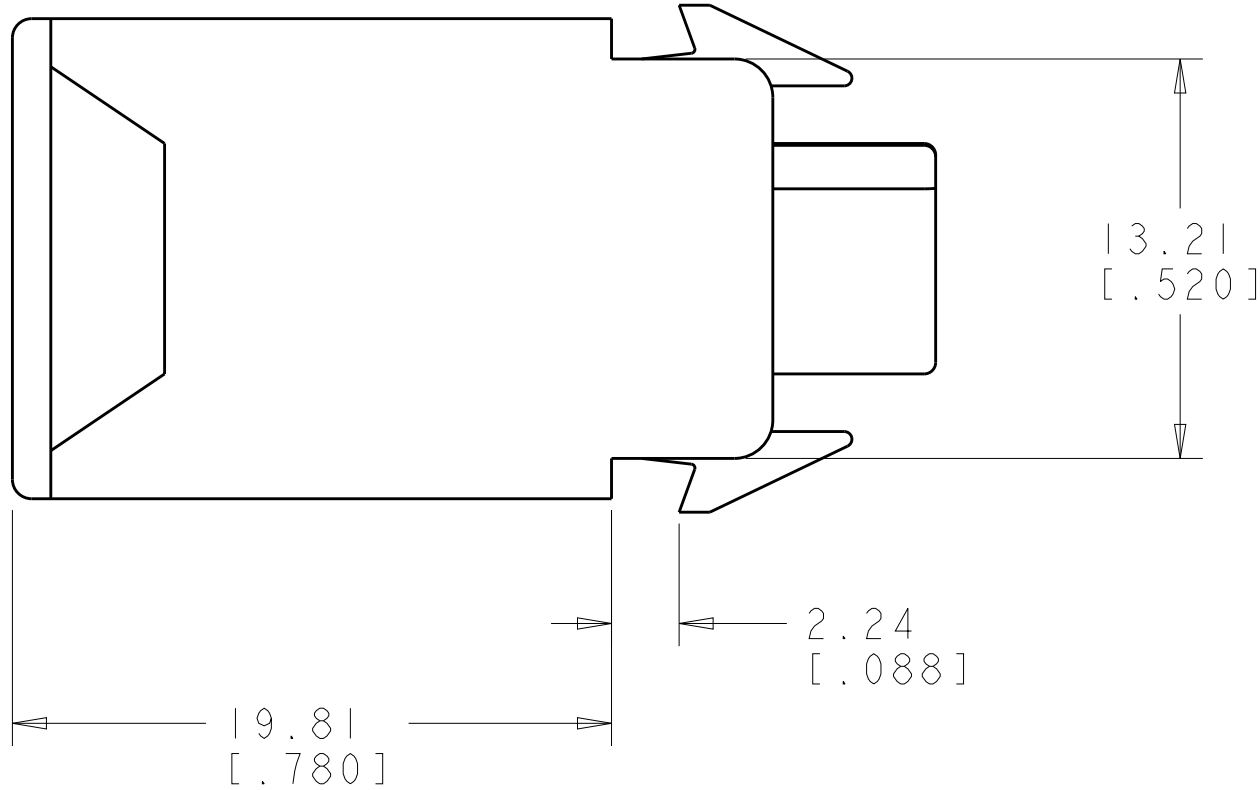
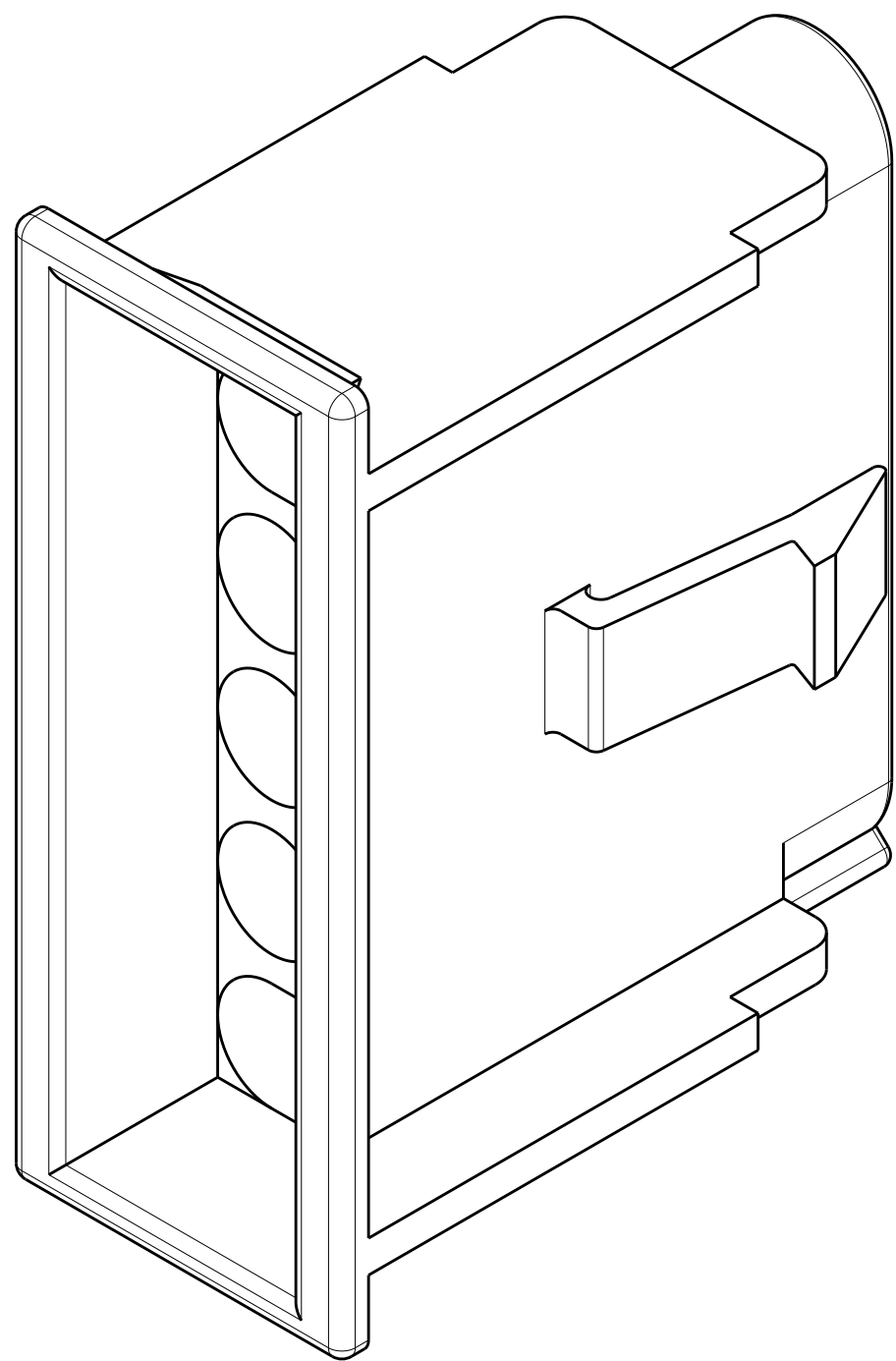


| REVISIONS | | | | | |
|-----------|------|---------------------------|-----------|------|-------|
| P. | LTR. | DESCRIPTION | DATE | DWN. | APVD. |
| | A1 | REVISED PER ECR-17-015922 | 07NOV2017 | BDA | KR |
| | | | | | |
| | | | | | |
| | | | | | |


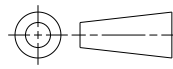


- △1 PANEL THICKNESS 2.5±0.25 [.098±.010].
2. PANEL MUST BE PUNCHED SO THAT THE HOUSING ENTERS THE PANEL IN THE SAME DIRECTION AS THE PUNCH.
3. DIMENSIONS SHOWN REPRESENT PRODUCT IN DRY, AS MOLDED, CONDITION. ADDITIONAL 2% GROWTH DUE TO SUBSEQUENT MOISTURE ABSORPTION MAY OCCUR AND SHOULD BE ACCOUNTED FOR.
- △4 RIBS EQUALLY SPACED, NO SPECIFIC ORIENTATION. FOUR RIBS PREFERRED, SIX RIBS OPTIONAL.



RECOMMENDED PANEL CUT OUT △

| | |
|-----------------------|-------------|
| 0.317 IN ³ | 2029129-1 |
| VOLUME | PART NUMBER |

| | | | | | |
|---|--|--------------------|------------------|---|--------------------------|
| THIS DRAWING IS A CONTROLLED DOCUMENT. | | DWN K. WHITAKER | 07JUL2008 |  TE Connectivity | |
| DIMENSIONS: mm[INCHES] | | CHK D. COLEY | 07JUL2008 | | |
|  | TOLERANCES UNLESS OTHERWISE SPECIFIED: | | APVD D. COLEY | 07JUL2008 | NAME |
| | 0 PLC ±" | | PRODUCT SPEC | | CAP. |
| | 1 PLC ±" | | APPLICATION SPEC | | LEAD-IN RAMP, 5 CIRCUIT, |
| | 2 PLC ±" | | RESTRICTED TO | | UNIVERSAL MATE-N-LOK(TM) |
| MATERIAL NYLON,UL94V-0, BLACK | | FINISH | | SIZE | CAGE CODE |
| | | | | DRWG NO | DRAWING NO |
| | | | | SCALE | 4:1 |
| | | | | SHEET | 1 |
| | | | | OF | 1 |
| | | | | REV | A1 |