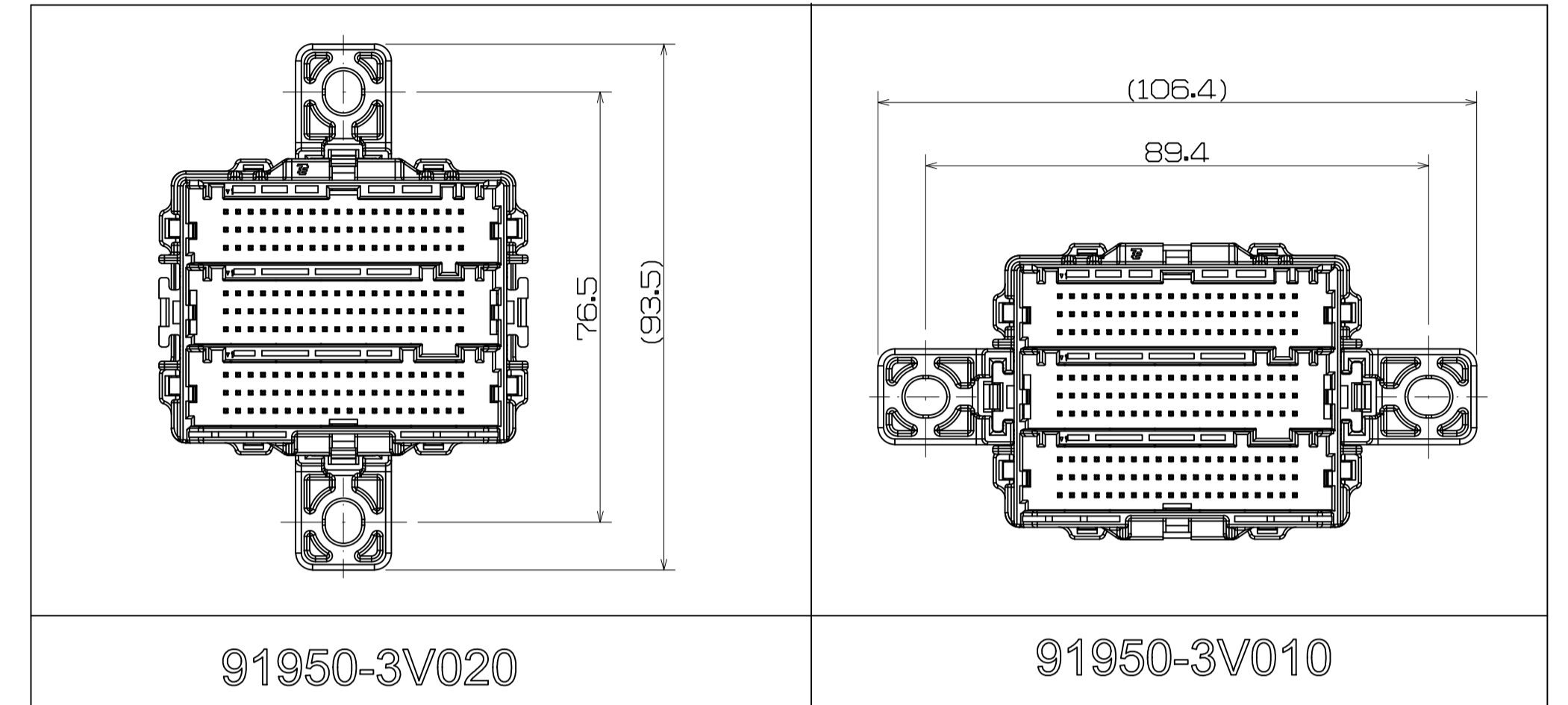
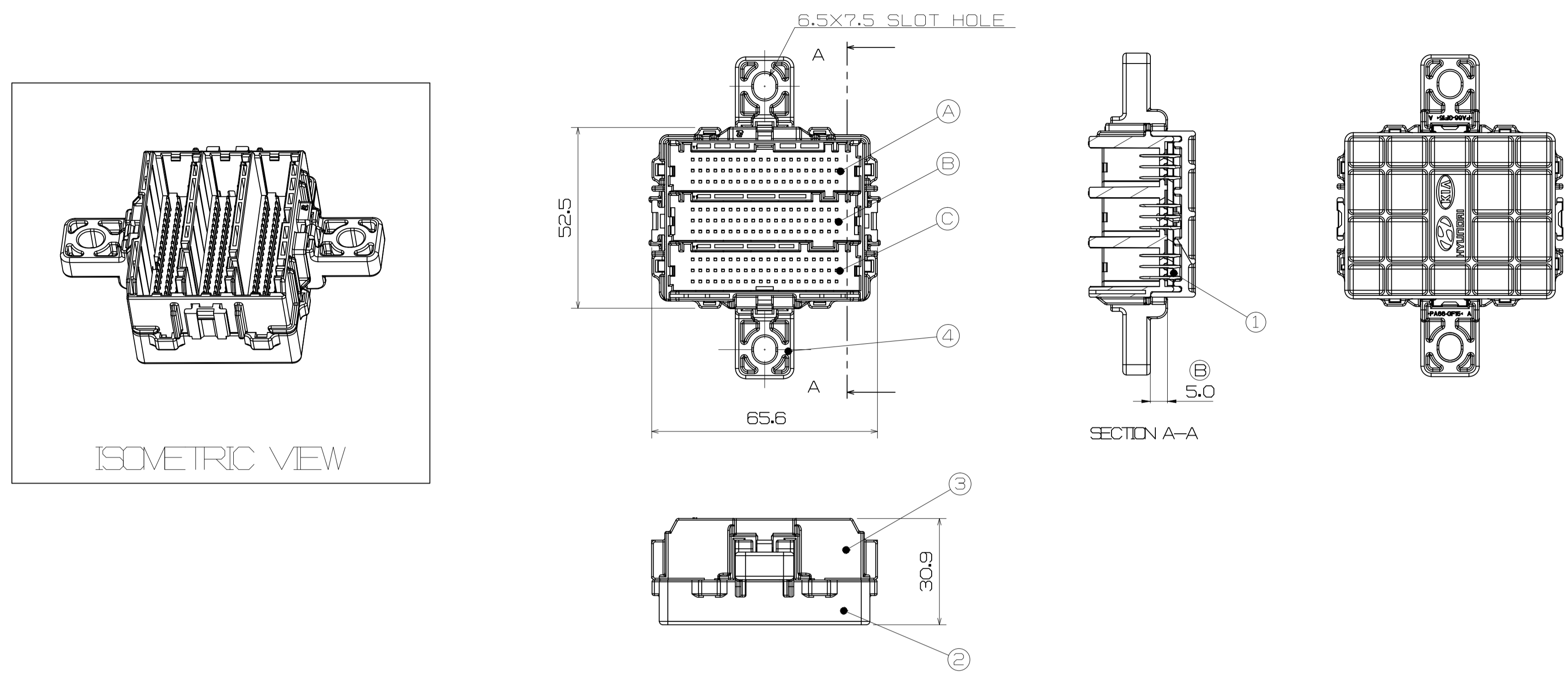


LOC	DIST	REVISIONS			
P	LTR	DESCRIPTION	DATE	OWN	APVD
A		RELEASED	10 MAY '10	YG	JK
B		REVISED(IECR-12-010024)	01 JUN '12	KC	JK



"A" Connector																			
1	2	3	4	5	6	7	8	9	10	11	12	13	14	15	16	17	18	19	20
ILL+	ILL+	ILL+	ILL+	POWER IG1 MODULE 10A	POWER IG1 MODULE 10A	POWER IG1 MODULE 10A	POWER IG1 MODULE 10A	POWER IG1 MODULE 10A	POWER IG1 MODULE 10A	POWER IG1 MODULE 10A	POWER IG1 MODULE 10A	POWER IG1 MODULE 10A	POWER IG1 MODULE 10A	POWER IG1 MODULE 10A	POWER IG2 ACCORDIA	POWER IG2 ACCORDIA	POWER IG2 ACCORDIA	POWER IG2 ACCORDIA	POWER IG2 ACCORDIA
21	22	23	24	25	26	27	28	29	30	31	32	33	34	35	36	37	38	39	40
ILL+	ILL+	ILL+	ILL+	ILL+	ILL+	ILL+	C-CAN HI	C-CAN HI	C-CAN HI	C-CAN HI	C-CAN HI	C-CAN HI	C-CAN HI	C-CAN HI	C-CAN HI	C-CAN HI	C-CAN HI	C-CAN HI	C-CAN HI
41	42	43	44	45	46	47	48	49	50	51	52	53	54	55	56	57	58	59	60
ILL+	ILL+	ILL+	ILL+	ILL+	ILL+	ILL+	C-CAN LOW	C-CAN LOW	C-CAN LOW	C-CAN LOW	C-CAN LOW	C-CAN LOW	C-CAN LOW	C-CAN LOW	C-CAN LOW	C-CAN LOW	C-CAN LOW	C-CAN LOW	C-CAN LOW

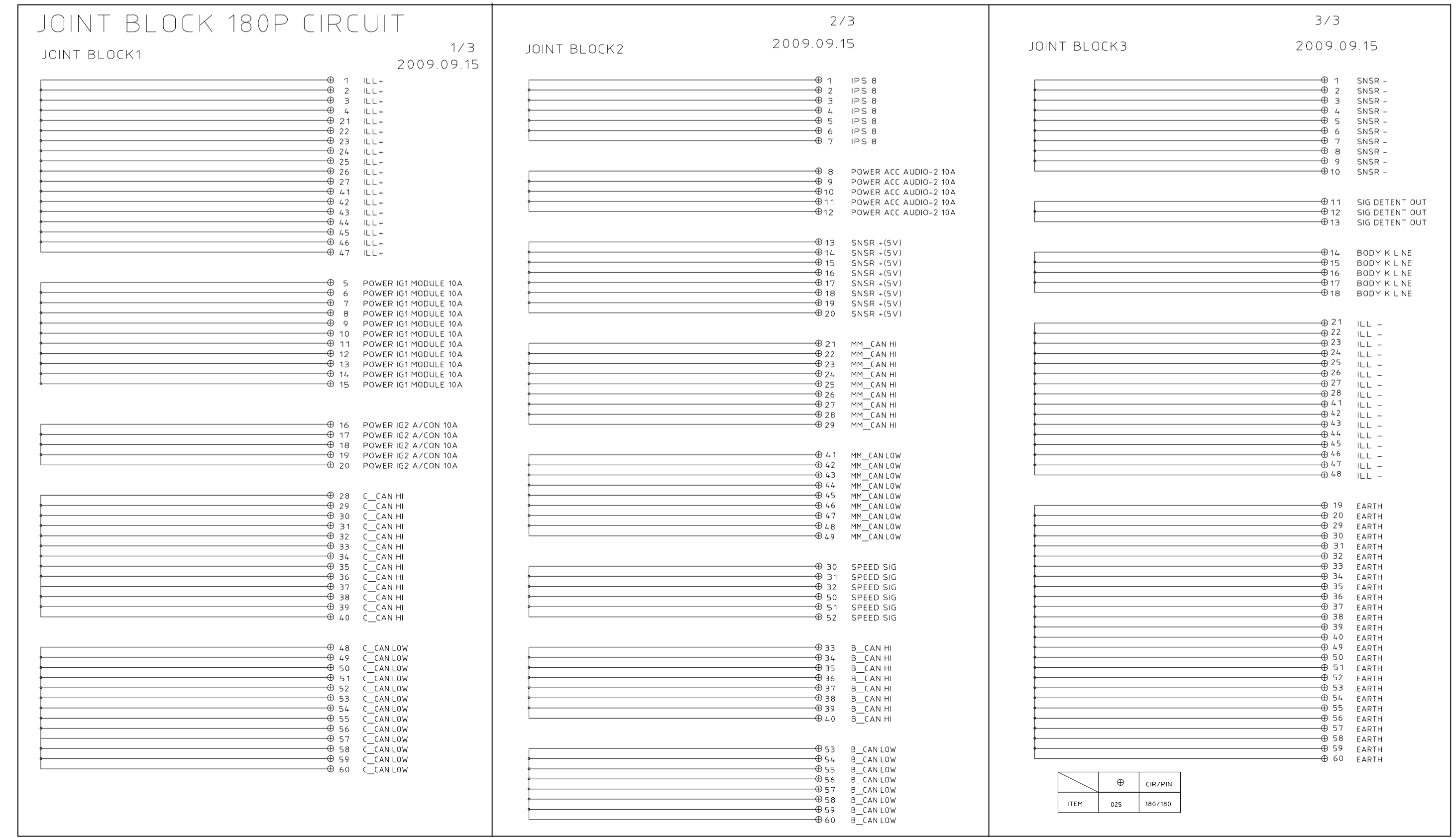
"B" Connector																			
1	2	3	4	5	6	7	8	9	10	11	12	13	14	15	16	17	18	19	20
IPSB	IPSB	IPSB	IPSB	IPSB	IPSB	IPSB	POWER ACC AUDIO-2 10A	POWER ACC AUDIO-2 10A	POWER ACC AUDIO-2 10A	POWER ACC AUDIO-2 10A	POWER ACC AUDIO-2 10A	SNRSR +ISV	SNRSR +ISV	SNRSR +ISV	SNRSR +ISV	SNRSR +ISV	SNRSR +ISV	SNRSR +ISV	SNRSR +ISV
21	22	23	24	25	26	27	28	29	30	31	32	33	34	35	36	37	38	39	40
MH_CAN HI	MH_CAN HI	MH_CAN HI	MH_CAN HI	MH_CAN HI	MH_CAN HI	MH_CAN HI	MH_CAN HI	MH_CAN HI	MH_CAN HI	SPEED SIG	SPEED SIG	SPEED SIG	B_CAN HI	B_CAN HI	B_CAN HI	B_CAN HI	B_CAN HI	B_CAN HI	B_CAN HI
41	42	43	44	45	46	47	48	49	50	51	52	53	54	55	56	57	58	59	60
MH_CAN LOW	MH_CAN LOW	MH_CAN LOW	MH_CAN LOW	MH_CAN LOW	MH_CAN LOW	MH_CAN LOW	MH_CAN LOW	MH_CAN LOW	MH_CAN LOW	SPEED SIG	SPEED SIG	SPEED SIG	B_CAN LOW	B_CAN LOW	B_CAN LOW	B_CAN LOW	B_CAN LOW	B_CAN LOW	B_CAN LOW

"C" Connector																			
1	2	3	4	5	6	7	8	9	10	11	12	13	14	15	16	17	18	19	20
SNRSR-	SNRSR-	SNRSR-	SNRSR-	SNRSR-	SNRSR-	SNRSR-	SNRSR-	SNRSR-	SNRSR-	SIG DETENT OUT	SIG DETENT OUT	SIG DETENT OUT	BODY P KINE	BODY P KINE	BODY P KINE	BODY P KINE	BODY P KINE	BODY P KINE	EARTH
21	22	23	24	25	26	27	28	29	30	31	32	33	34	35	36	37	38	39	40
ILL-	ILL-	ILL-	ILL-	ILL-	ILL-	ILL-	EARTH	EARTH	EARTH	EARTH	EARTH	EARTH	EARTH	EARTH	EARTH	EARTH	EARTH	EARTH	EARTH
41	42	43	44	45	46	47	48	49	50	51	52	53	54	55	56	57	58	59	60
ILL-	ILL-	ILL-	ILL-	ILL-	ILL-	ILL-	EARTH	EARTH	EARTH	EARTH	EARTH	EARTH	EARTH	EARTH	EARTH	EARTH	EARTH	EARTH	EARTH

- 주 기
1. 치수는 성형 후 24시간 경과된 후의 상태에 포함함
 2. BURR, SINK MARK 등이 없을 것.

NOTE

1. DIMENSIONS SPECIFIED MUST BE MET AF 24HR FROM MOLDING.
2. MUST BE FREE FROM BURR, SINK MARK.



MATING CONNECTOR			
ITEM	TE P/N	CONNECTOR NAME	COLOR
(A)	2005402-3	60P PLUG ASSY FOR JOINT	GRAY
(B)	2005402-2	60P PLUG ASSY FOR JOINT	BLACK
(C)	2005402-1	60P PLUG ASSY FOR JOINT	WHITE

NO	HMC P/NO.	VEN P/NO.	DESCRIPTION
2	91950-3V020	1-2005405-2	025 180P JOINT BLOCK ASSEMBLY
1	91950-3V010	1-2005405-1	025 180P JOINT BLOCK ASSEMBLY

④	2005430-1	BRACKET HSG FOR 180P JOINT	BLACK	PA66-GF15	2	2
③	2005406-1	BLOCK HSG FOR 180P JOINT	BLACK	PBT-GF15	1	1
②	2005407-1	COVER HSG FOR 180P JOINT	BLACK	PBT-GF15	1	1
①	2005408-1	PCB ASS'Y FOR 180P JOINT			1	1
NO	VEN P/NO.	DESCRIPTION	COLOR	MATERIAL	QTY	

DIMENSIONS		TOLERANCES UNLESS OTHERWISE SPECIFIED:		DRAWN	
MM		0-XX-4	± 0.4	CHK	KC SUNG
		4-XX-18	± 0.5		YJ YOUNG
		10-XX-30	± 0.5		JK SUNG
		30-XX-50	± 0.5		
		50-XX-100	± 0.8		
		80-XX-150	± 1.0		
		ANGLES	± 3°		

NAME	SIZE	CAGE CODE	DRAWING NO	RESTRICTED TO
180P JOINT BLOCK ASS'Y	A 1	00779	C= 2005405	-
CUSTOMER DRAWING		SCALE	1/1	SHEET 1 OF 1