

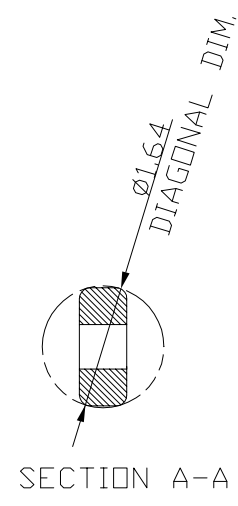
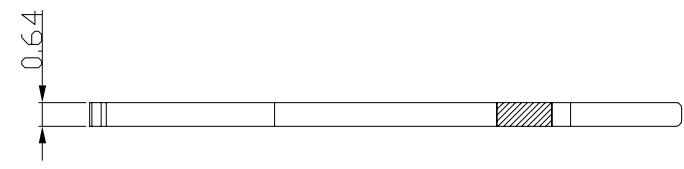
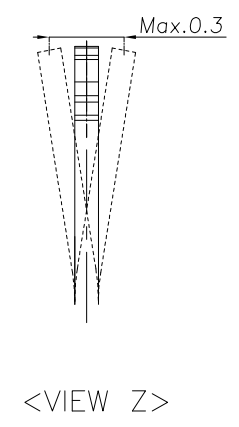
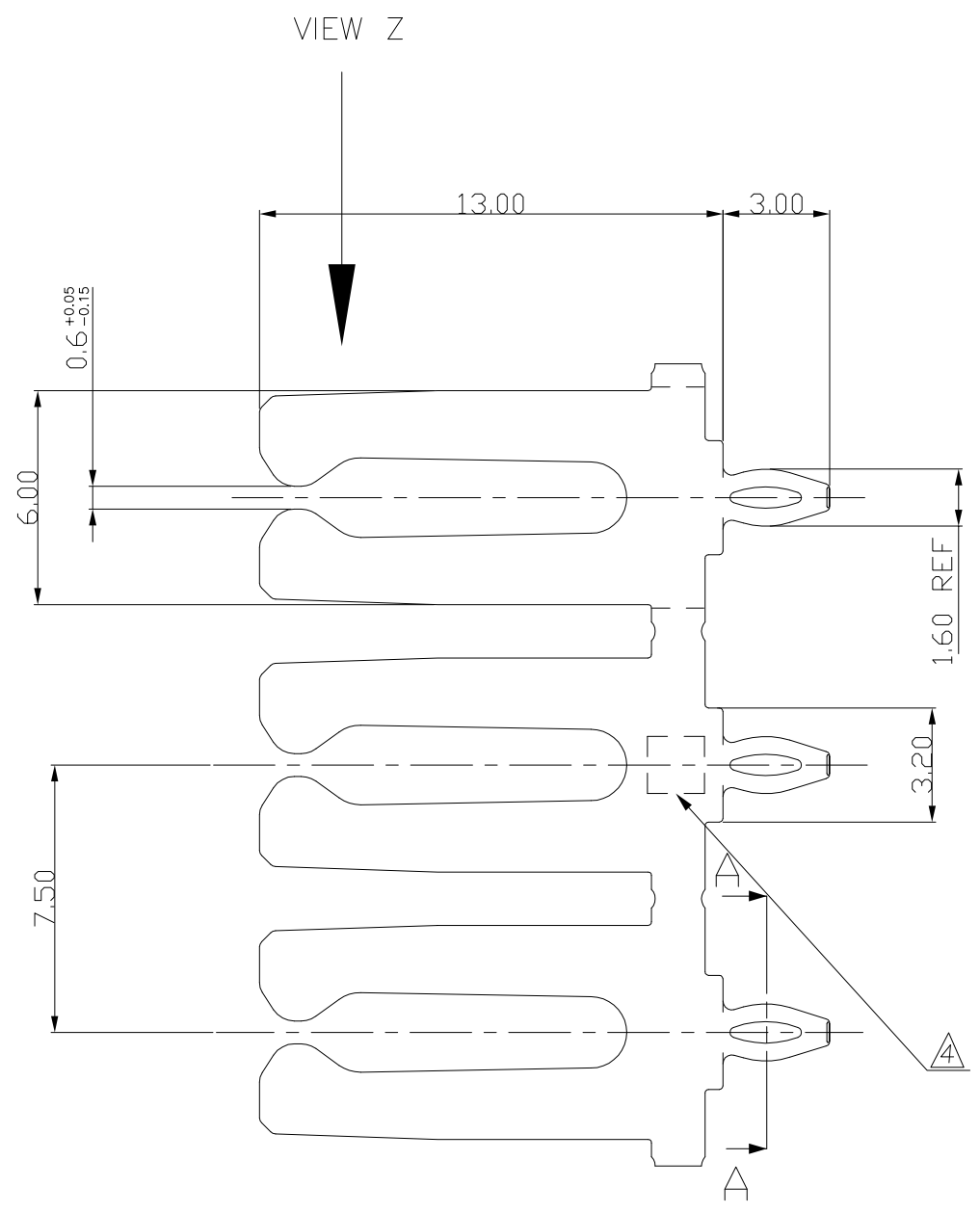
4

2

1

THIS DRAWING IS UNPUBLISHED. RELEASED FOR PUBLICATION ,1997 .
 © COPYRIGHT 1998 BY AMP KOREA. ALL RIGHTS RESERVED.

LOC	DIST	REVISIONS					
		P	LTR	DESCRIPTION	DATE	DWN	APVD
DS			A1	REVISED (ECR-09-008660)	16.APR'09	JY	JK
			A2	REVISED (ECR-09-010239)	29.APR'09	JY	JK
			A3	REVISED (ECR-14-000955)	12.FEB'14	SE	JK



- NOTES ;
1. INSERTION FORCE : MAX 2.5 kgf
 2. EXTRACTION FORCE : 0.25 kgf~3.0 kgf
 3. RECOMMENDED PCB HOLE DIA. $\phi 1.45$
- ③ ④ SEQUENTIAL DIE ID. NO. PLACED THE TRADE MARK. INTERRELATION AMONG THE DIE NO., ID MARK, AND PRODUCT NO. IS TABLE AS SHOWN.

③ PRE-TINNED	P/N : 2-705496-0	2005231-3
POST-TIN PL.	MADE FROM 2005231-1	2005231-2
PLAIN	C64750(PMC 26)	2005231-1
FINISH	MATERIAL	PART NO

DIE NO.	ID MARK	PRODUCT NO.
1 11-30959		2005231-1
2 11-36043	1	2005231-3

<small>THIS DRAWING IS CONTROLLED DOCUMENT FOR AMP INCORPORATED. IT IS SUBJECT TO CHANGE AND THE CONTROLLING ENGINEERING ORGANIZATION SHOULD BE CONTACTED FOR THE LATEST REVISION.</small>		DWN SE JUNG CHK YJ YOUN APVD JK SONG PRODUCT SPEC APPLICATION SPEC WEIGHT CUSTOMER DRAWING		TE Connectivity NAME FORK REC. (0.64t)	
DIMENSIONS: MM DIMENSIONS APPLY BEFORE PLATING 	TOLERANCES UNLESS OTHERWISE SPECIFIED: 0 <XX<10 ± 0.2 10<XX<30 ± 0.25 30<XX<100 ± 0.3 ANGLES ± 3°	SIZE A3	CAGE CODE 00779	DRAWING NO 2005231	SCALE 5/1 SHEET 1 OF 1 REV A3
MATERIAL SEE TABLE	FINISH SEE TABLE				