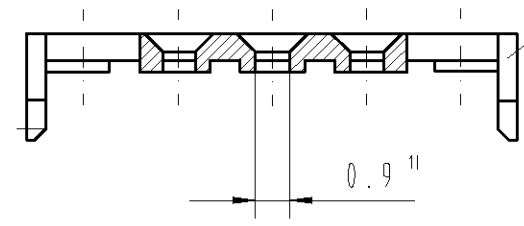
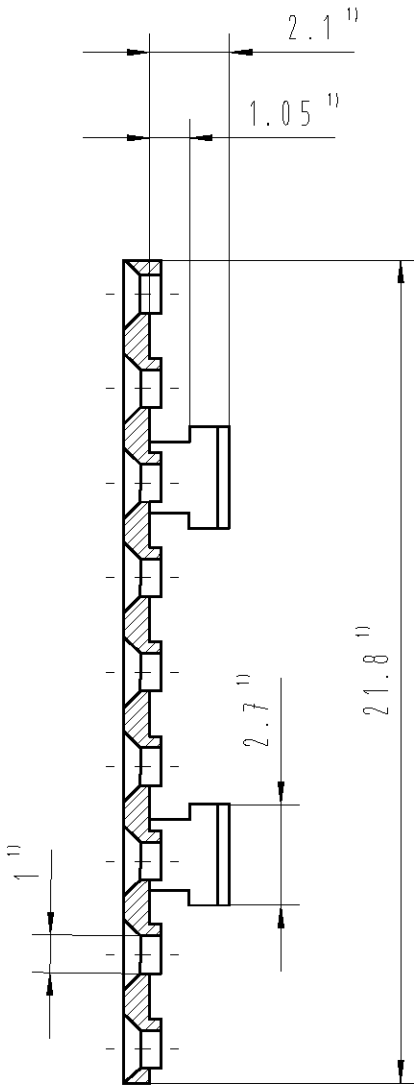
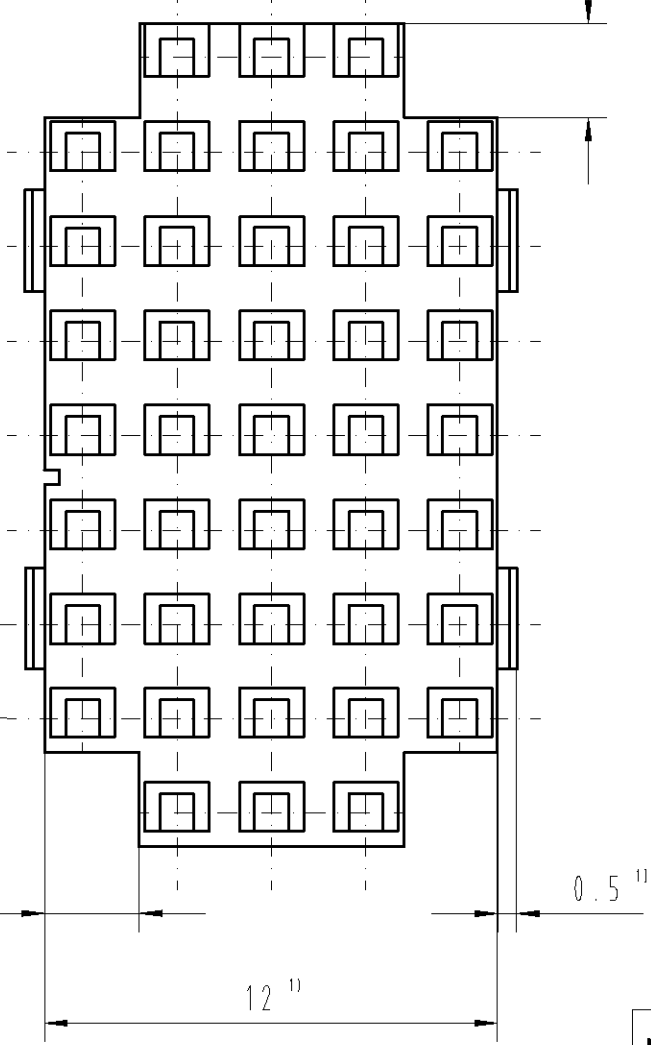
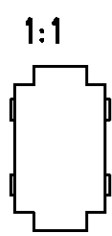


PROPRIETARY: THIS INFORMATION IS CONFIDENTIAL AND PROPRIETARY TO TYCO ELECTRONICS CORPORATION AND ITS WORLDWIDE SUBSIDIARIES AND AFFILIATES. IT MAY NOT BE DISCLOSED TO ANYONE, OTHER THAN TYCO ELECTRONICS PERSONNEL, WITHOUT WRITTEN AUTHORIZATION FROM TYCO ELECTRONICS CORPORATION, HARRISBURG, PENNSYLVANIA USA.

Raster 2.5
Grid

Raster 2.5
Grid



Werkstoff: PC mit 10%
Glasfasern (UL94 V-0)
Material: PC with 10%
fiber glass content (UL94 V-0)

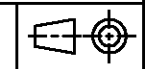
1) Einbaumaß
Reference dimension

Active Part Numbers. Contact
TE Connectivity for other
configuration availability

Old Part Number TE Part Number
C39228-A161-C2 2-1393610-8

APPLICABLE SPEC.:				FINISH	
				DIMENSIONS APPLY PLATING	
				SCALE	5:1
				WEIGHT	
				MATERIAL	
				NAME	
				Kundenzeichnung Zentrierplatte	
				Customer Drawing Centering Plate	
				NO.	
				C39228-A161-C2-*7427	
				SHT. 1	
				OF 1	
REV.	CHANGE ORDER	DATE	APP.	Customer Drawing No. : C 2-1393610-8	
A2	ECO-13-016158	16OCT2013	MH		

LOC
GW



DIMENSIONS
IN MM

TOLERANCE UNLESS
SPECIFIED OTHERWISE