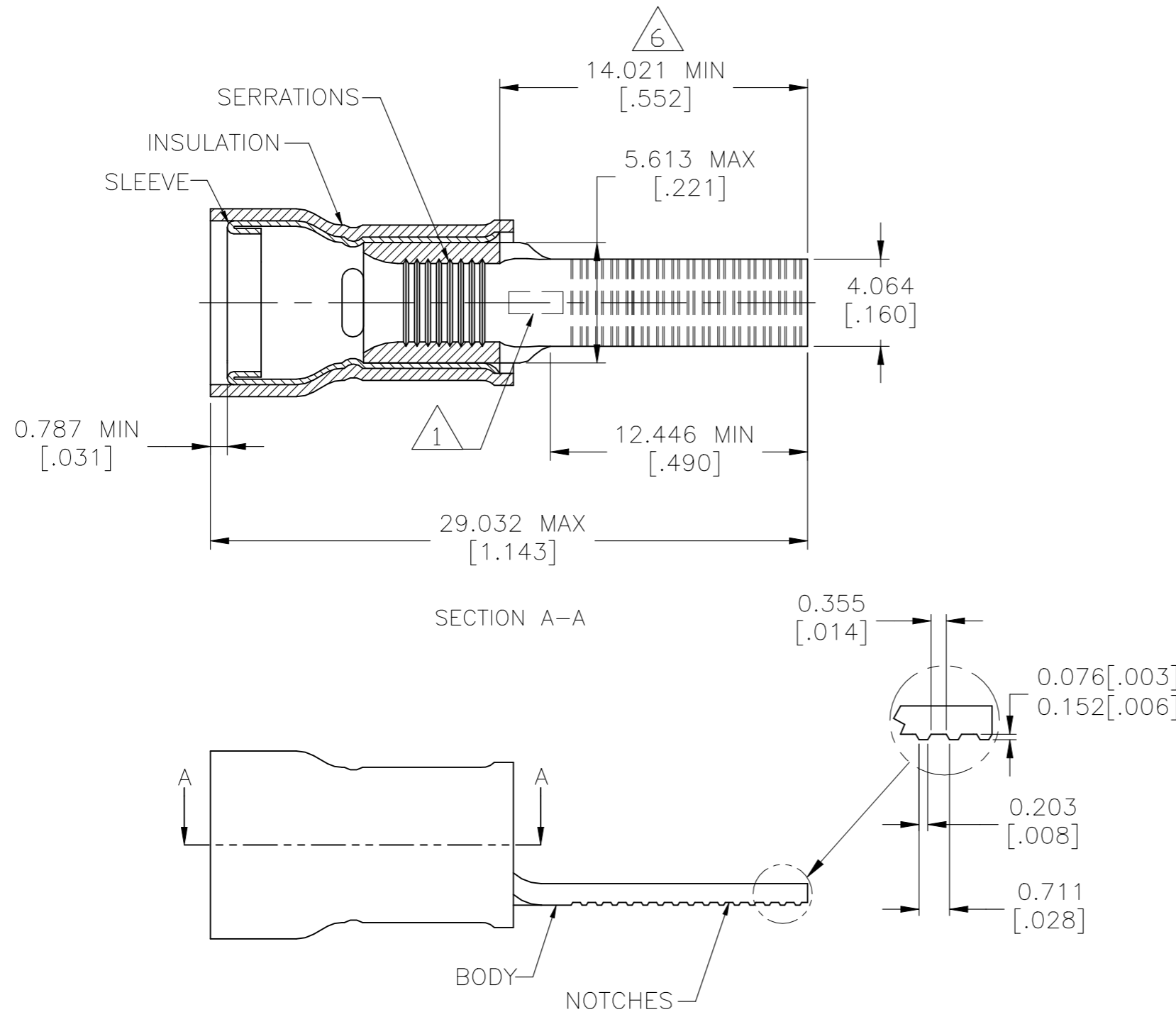


P	LTR	DESCRIPTION	DATE	DWN	APVD
	A	INITIAL RELEASE	04MAR2022	GK	SC



- 1 STAMP AMP 12-10 APPROX AS SHOWN
- 2. WIRE INSULATION DIAMETER:
 $\phi 3.810-6.401 [\phi .150-.252]$
- 3. BODY MATERIAL THK: $1.016 \pm 0.051 [.040 \pm .002]$
- 4 MATERIAL:
 BODY & SLEEVE - COPPER PER ASTM B152
 INSULATION - NYLON PER ASTM D4066 TYPE 1
- 5 FINISH:
 BODY & SLEEVE - TIN PLATE $0.00254 [.000100]$
 MIN EXT THK PER ASTM B545
 INSULATION COLOR - YELLOW
- 6 APPLIES FROM EDGE OF METAL WIRE BARREL

50	WPF060-N	1SET152006R0000	131332
QTY	DESIGNATION	ENTRELEC PN	TE PN

MAX RECOMMENDED OPERATING TEMPERATURE: 105°C [221°F]		DIMENSIONS: mm [INCHES]		TOLERANCES UNLESS OTHERWISE SPECIFIED: 0 PLC ± - 1 PLC ± - 2 PLC ± - 3 PLC ± 0.127[.005] 4 PLC ± - ANGLES ± -		DWN 04MAR2022 GOPALAKRISHNA HV CHK 04MAR2022 SUVARNA CHETHAN APVD 04MAR2022 SUVARNA CHETHAN PRODUCT SPEC - APPLICATION SPEC 114-2157 WEIGHT -		ENTRELEC Electrical Solutions			
VOLTAGE RATING: 300V MAX				FINISH 4 5		NAME TERMINAL, WIRE TAB, PIDG, WIRE SIZE: 12-10 AWG		SIZE	CAGE CODE	DRAWING NO	RESTRICTED TO
WIRE CROSS SECTIONAL AREA RANGE: $2.62-6.64 \text{mm}^2 [5,180-13,100]$ STRANDED		MATERIAL 4		FINISH 5		WEIGHT -		A3	-	C-1SET152006R0000	-
CUSTOMER DRAWING								SCALE	SHEET	REV	
								6:1	1 OF 1	A	