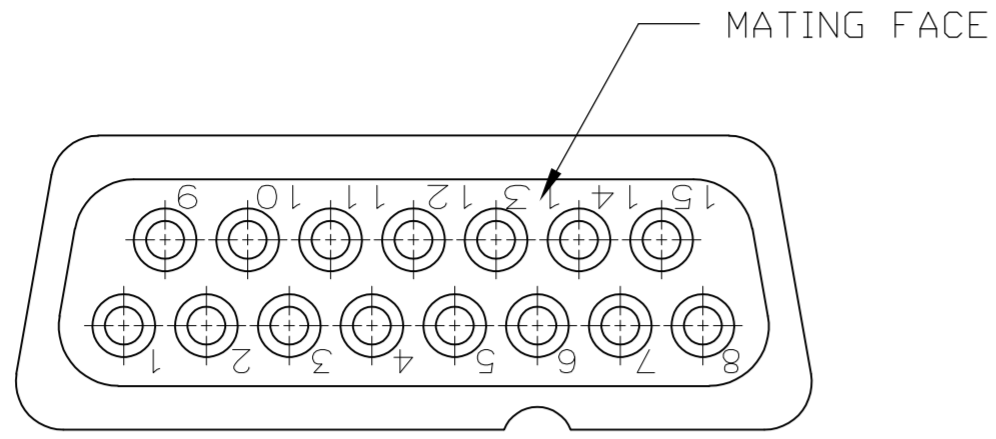
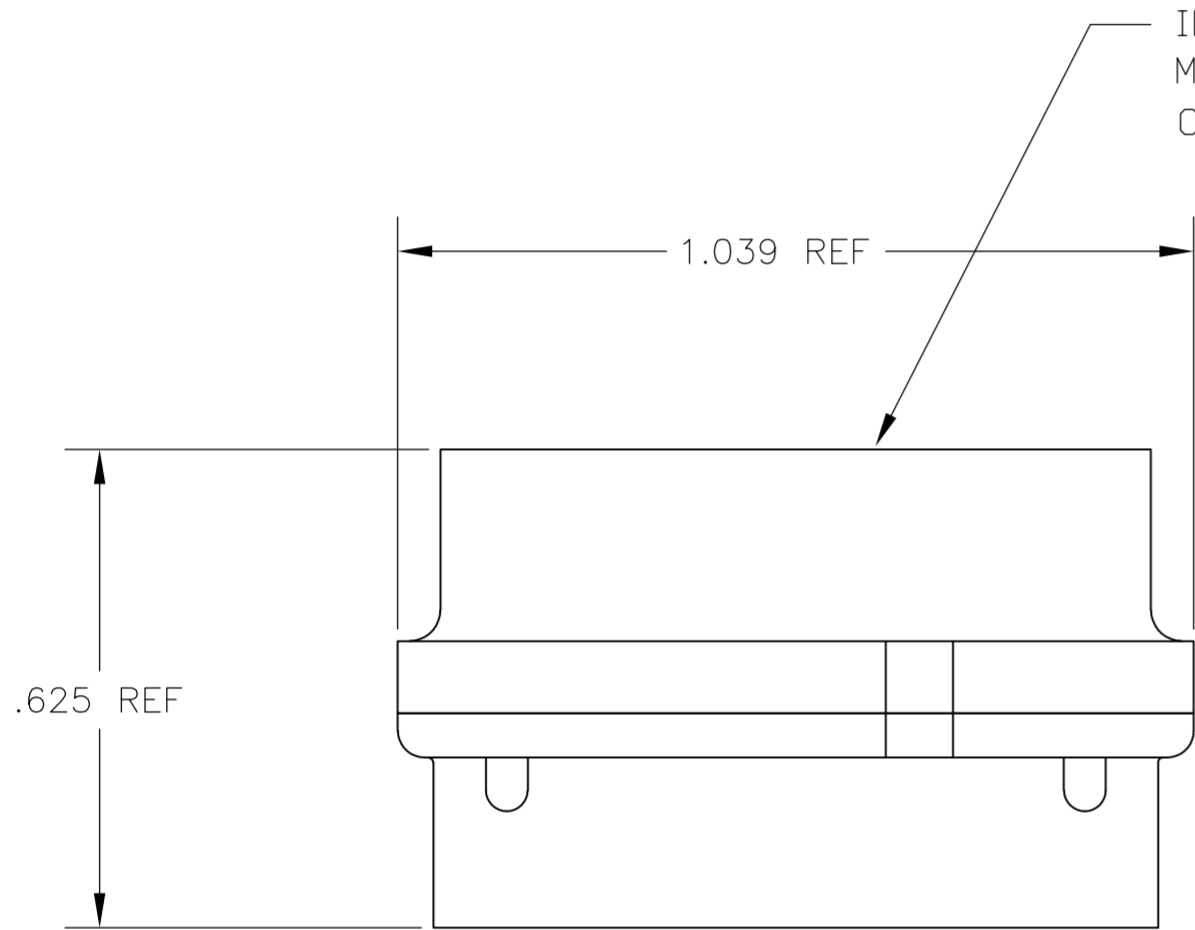


THIS DRAWING IS UNPUBLISHED. RELEASED FOR PUBLICATION  
 © COPYRIGHT BY TYCO ELECTRONICS CORPORATION. ALL INTERNATIONAL RIGHTS RESERVED.

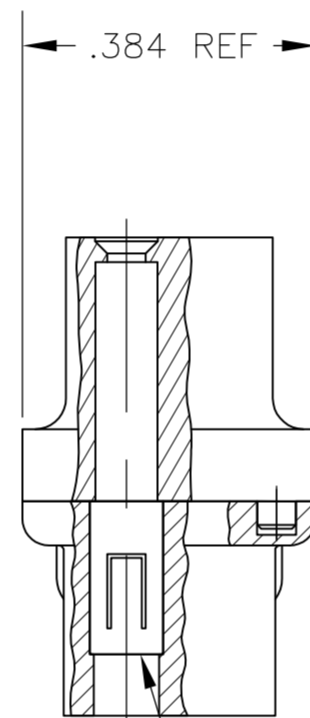
LOC	DIST	REVISIONS			
P	LTR	DESCRIPTION	DATE	DWN	APVD
DF	D9	A	RELEASE PER ECO-08-024672	07OCT08	PY RL



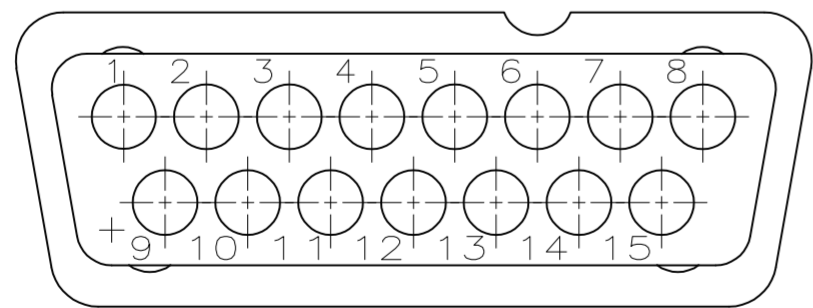
1. MAX WIRE INSULATION TO BE USED WITH THIS RECEPTACLE IS .068 DIA
2. RETENTION CLIPS ARE INCLUDED IN INSERTS
3. THIS RECEPTACLE WILL ACCEPT SIZE 20 SOCKET CONTACT, M39029/63-368 OR ANY TE HD-20 SOCKET CONTACT. CONTACTS ORDERED SEPARATELY.



INSERT ASSEMBLY  
 MATERIAL: POLYESTER PER MIL-M-24519  
 COLOR: BLUE



RETENTION CLIP  
 MATERIAL: STAINLESS STEEL



1996933-2  
 PART NO.

THIS DRAWING IS A CONTROLLED DOCUMENT.		DWN P. YEAGER 07OCT08	Tyco Electronics Corporation Harrisburg, PA 17105-3608																			
DIMENSIONS: INCHES		CHK R. LEASE 07OCT08	NAME INSERT ASSEMBLY, AMPLIMITE, RECEPTACLE HOUSING, 15 POSN., SIZE 2, SERIES 109																			
TOLERANCES UNLESS OTHERWISE SPECIFIED:		APVD R. LEASE 07OCT08	PRODUCT SPEC																			
<table border="1"> <tr><td>0 PLC</td><td>±</td><td>-</td></tr> <tr><td>1 PLC</td><td>±</td><td>-</td></tr> <tr><td>2 PLC</td><td>±</td><td>-</td></tr> <tr><td>3 PLC</td><td>±</td><td>.005</td></tr> <tr><td>4 PLC</td><td>±</td><td>-</td></tr> <tr><td>ANGLES</td><td>±</td><td>-</td></tr> </table>		0 PLC	±	-	1 PLC	±	-	2 PLC	±	-	3 PLC	±	.005	4 PLC	±	-	ANGLES	±	-	APPLICATION SPEC		RESTRICTED TO
0 PLC	±	-																				
1 PLC	±	-																				
2 PLC	±	-																				
3 PLC	±	.005																				
4 PLC	±	-																				
ANGLES	±	-																				
MATERIAL SEE CALLOUTS		FINISH	WEIGHT	SIZE A2	CAGE CODE 00779																	
				DRAWING NO C=1996933																		
CUSTOMER DRAWING			SCALE 4:1	SHEET 1 of 1	REV A																	

1996933