

4

3

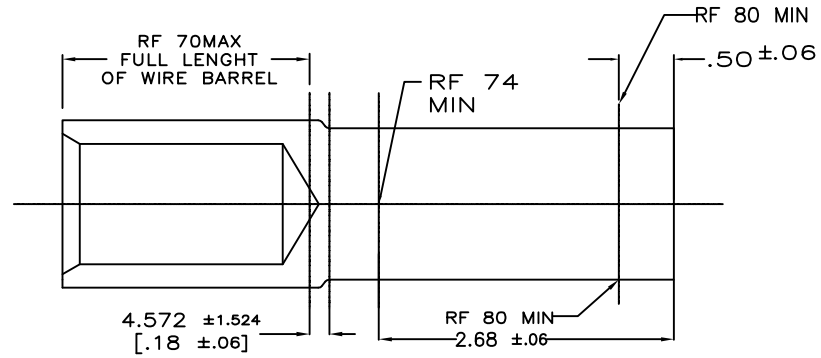
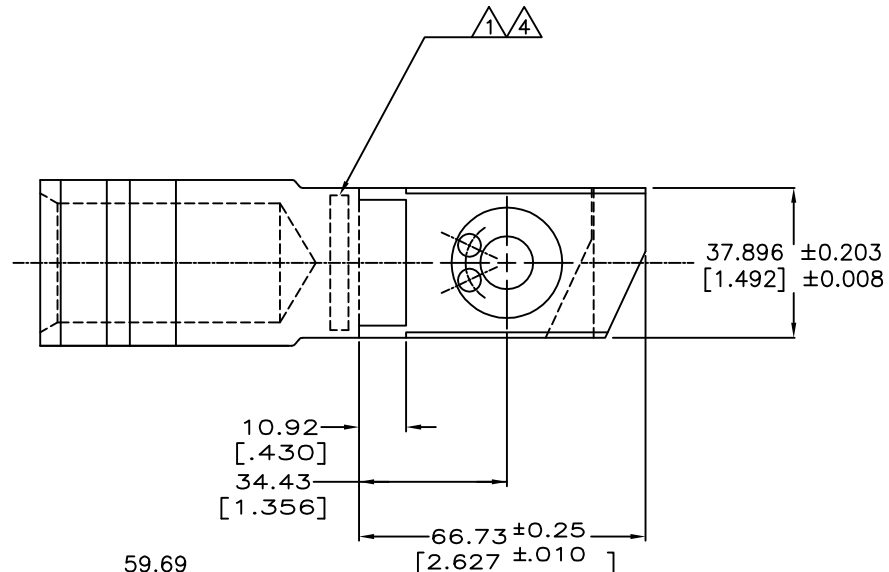
2

1

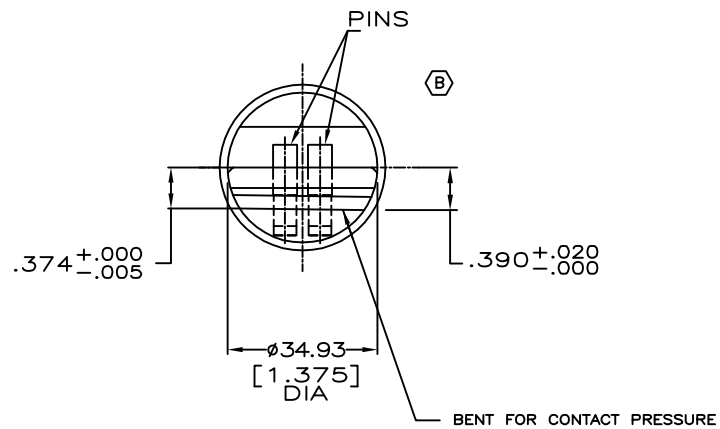
THIS DRAWING IS UNPUBLISHED. RELEASED FOR PUBLICATION
COPYRIGHT - By - ALL RIGHTS RESERVED.

LOC		DIST		REVISIONS			
P	LR	DESCRIPTION	DATE	DM	APD		
3		ADDITIONAL VIEW ADDED, SHEET 2	14SEP2012	PK	HS		
A		RELEASE	24DEC2012	PK	HS		
B		ECR-13-015145	26SEP2013	PK	HK		

NOTE:
 ▲ STAMP AMP 777 MCM.
 ▲ MATERIAL: BRASS
 ▲ FINISH: SILVER PLATED
 (B) ▲ DATE CODE (DDMMYY) IN APPROX AREA



HEAT TREAT INSPECTION LOCATION POINTS VIEW (B)



D

D

C

C

B

B

1986727

A

A

THIS DRAWING IS A CONTROLLED DOCUMENT.		DMR PRAKASH KANNIAH 15DEC2011	STE TE Connectivity	
DIMENSIONS: mm [INCHES]		CHK STEPHEN 15DEC2011	NAME STEPHEN	
TOLERANCES UNLESS OTHERWISE SPECIFIED:		APD STEPHEN 15DEC2011	PRODUCT SPEC	
0 PLC ± -		APPLICATION SPEC		
1 PLC ± -		SIZE		
2 PLC ± 0.20 [.008]		CAGE CODE		
3 PLC ± -		DRAWING NO		
4 PLC ± -		RESTRICTED TO		
ANGLES ± -		A2 00779 C=1986727		
MATERIAL FINISH		WEIGHT - lbs		SCALE
2		CUSTOMER DRAWING		NTS
3		SHEET		1 of 2
		REV		B

4

3

2

1

THIS DRAWING IS UNPUBLISHED.

RELEASED FOR PUBLICATION

ALL RIGHTS RESERVED.

© COPYRIGHT - By -

LOC		DIST		REVISIONS			
P	LR	DATE	DM	APD			
G	86	-	-	-	SEE SHEET 1	-	-

B

$(.390 \pm .000 / +0.020)$
 $(.374 \pm .005 / +0.000)$
 $(.374 \pm .005 / +0.000)$
 $(.374 \pm .005 / +0.000)$

CENTER LINE OF CRIMP REFERENCE

REFER VIEW 'A' FOR DIMENSIONS

CENTER LINE OF CRIMP REFERENCE

REFER VIEW 'A' FOR DIMENSIONS

B

1.55 ±0.2
.05 ±0.1

45°

VIEW 'A'

NOTES:

1 MARK UP ON THE TERMINAL REPRESENTING THE CENTER OF CRIMPING IS TO BE ORIENTED 45 DEGREES FROM THE SLOT IN THE HORIZONTAL POSITION.

A

THIS DRAWING IS A CONTROLLED DOCUMENT.		DWG		12SEP2012		TE Connectivity	
DIMENSIONS:		CHK		PRAKASH KANNIAH		A2	
TOLERANCES UNLESS OTHERWISE SPECIFIED:		APD		STEPHEN		NAME	
mm [INCHES]		12SEP2012		STEPHEN		777 MCM QUICK DISCONNECT	
0 PLC ± -		PRODUCT SPEC		-		WIRE SIZE 777MCM	
1 PLC ± -		APPLICATION SPEC		-		AMPOWER	
2 PLC ± 0.20[.008]		SIZE		CAGE CODE		DRAWING NO	
3 PLC ± -		WEIGHT		A2		00779	
4 PLC ± -		CUSTOMER DRAWING		SCALE		SHEET	
ANGLES ± -		FINISH		NTS		2 of 2	
MATERIAL		RESTRICTED TO		REV		B	

1471-9 (3/11)

1986727