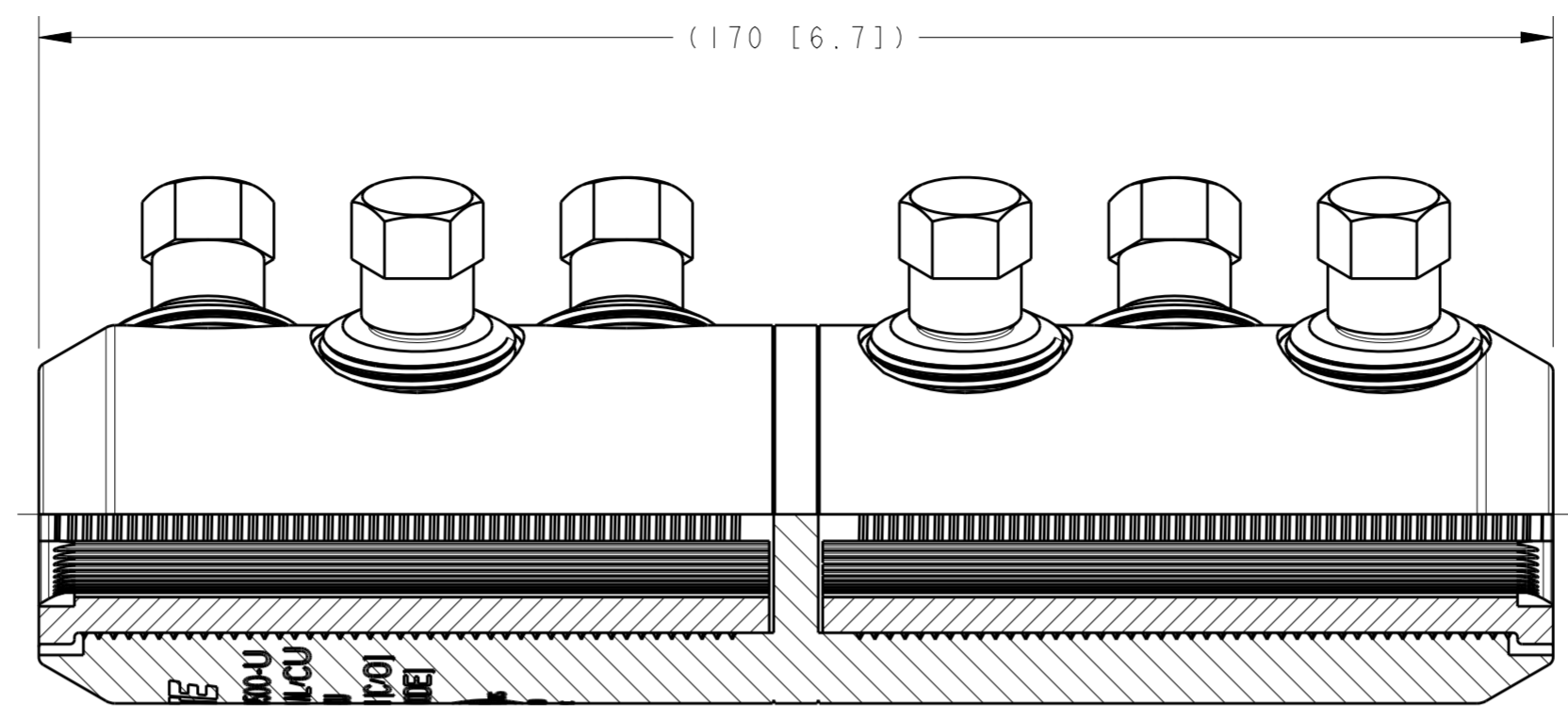
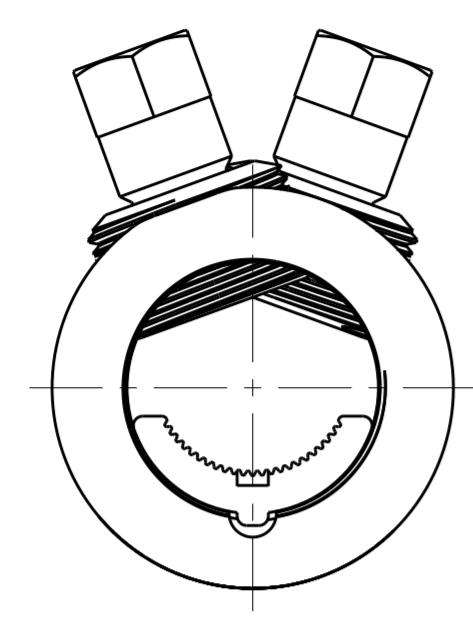
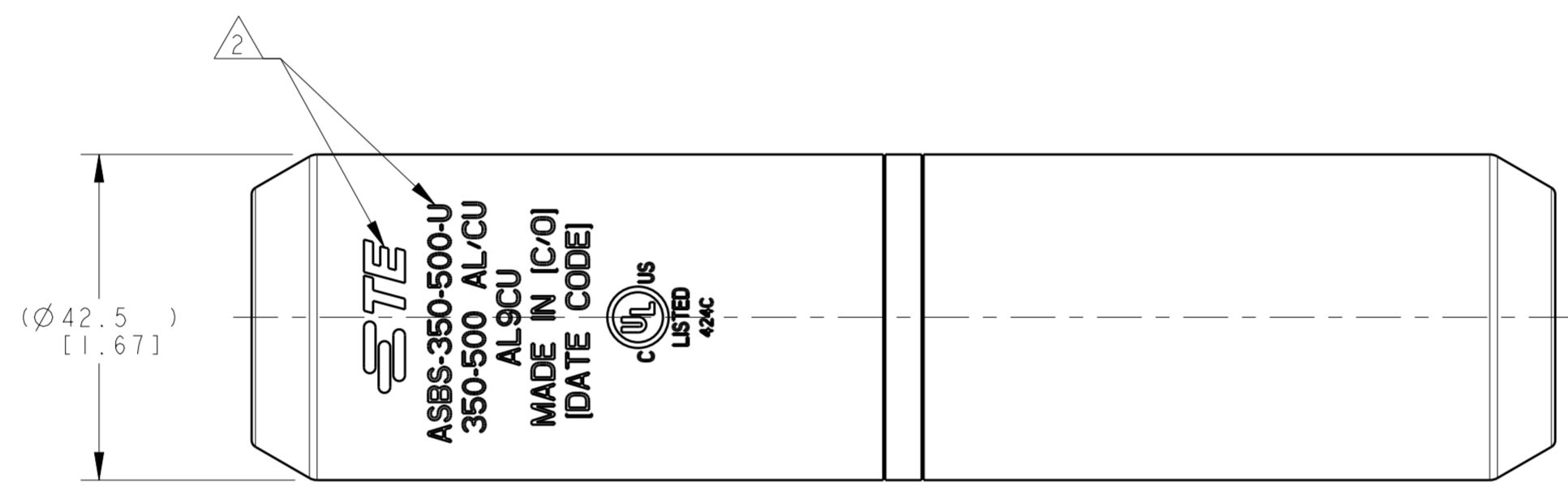


THIS DRAWING IS UNPUBLISHED. RELEASED FOR PUBLICATION 20  
 © COPYRIGHT 20 BY - ALL RIGHTS RESERVED.

LOC	DIST	REVISIONS					
GA	I	P	LTR	DESCRIPTION	DATE	DWN	APVD
		A		INITIAL REL. PER LC20-0002-12	19DEC2011	DM	BJ
		B		LC20-0021-12 / ECO-12-004172	27FEB2012	DM	BJ
		C		LC20-0006-14 / ECO-14-007529	14MAY2014	DM	BJ
		D		LC20-0072-20 / ECO-20-010390	23JUL2020	DM	BJ

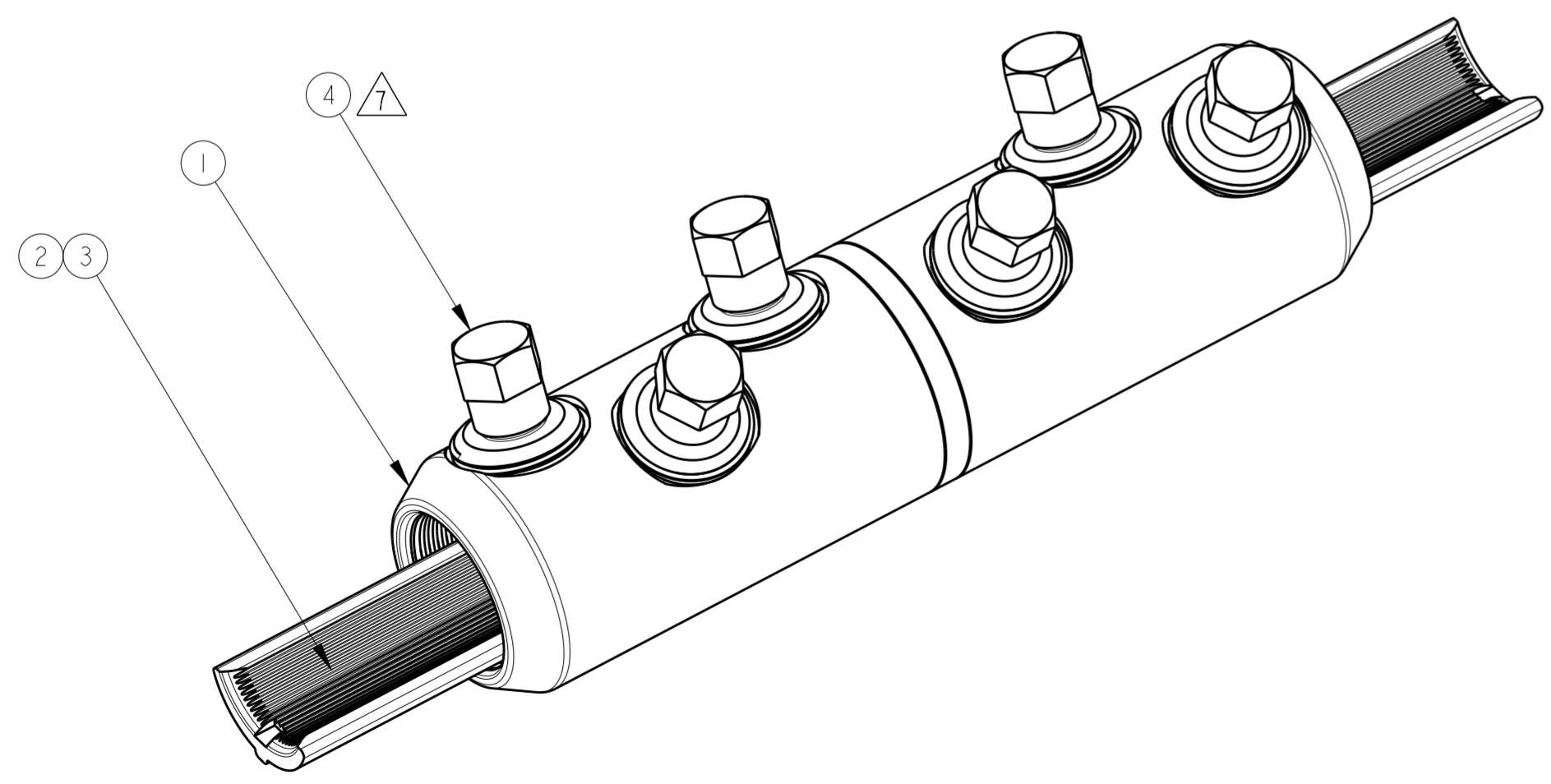


SECTION A - A



- ACCOMMODATES:  
350 KCMIL COMPACT Ø15.65 (.616 DIA) TO  
500 KCMIL STANDARD Ø20.65 (.813 DIA)  
ALUMINUM OR COPPER CONDUCTORS.

- MARKING:  
**STE**  
ASBS-350-500-U  
350-500 AL/CU  
AL9CU  
MADE IN [COUNTRY OF ORIGIN]  
[DATE CODE]
- ALL DIMENSIONS ARE FOR REFERENCE ONLY.
- CONNECTOR CONTAINS FACTORY APPLIED ANTI-OXIDE INHIBITOR.
- FINISH:  
ELECTRO-TIN PLATED.
- DO NOT REMOVE INSERTS FROM THE CONNECTOR.
- INSTALL BOLTS WITH 13 mm [1/2 inch] HEX SOCKET.



ASBS-350-500-U	1974144-1
CATALOG NO	PART NO

QTY	DESCRIPTION	ITEM NO
1	INSTALLATION INSTRUCTION SHEET, 408-32026	6
1	ABRASIVE TAPE	5
6	MULTI SHEAR HEAD BOLT, M22, ALUMINUM ALLOY	4
A/R	INHIBITOR	3
2	INSERT, ALUMINUM ALLOY, TIN PLATED	2
1	CONNECTOR SLEEVE BODY, ALUMINUM ALLOY, TIN PLATED	1
-1		
PARTS LIST		

THIS DRAWING IS A CONTROLLED DOCUMENT.		DWN D. MURUGLAH 19DEC2011	TE Connectivity	
DIMENSIONS: mm [INCH]		CHK A. BULZA 07FEB2012		
TOLERANCES UNLESS OTHERWISE SPECIFIED:		APVD B. JOHNSON 07FEB2012	NAME SHEARBOLT SLEEVE CONNECTOR, ALUMINUM, SOLID OIL STOP, 350 KCMIL TO 500 KCMIL	
0 PLC ±		PRODUCT SPEC	SIZE CAGE CODE DRAWING NO RESTRICTED TO	
1 PLC ±		APPLICATION SPEC	A200779 C-1974144	
2 PLC ±		WEIGHT	SCALE NTS SHEET 1 OF 1 REV D	
3 PLC ±				
4 PLC ±				
ANGLES ±				
FINISH				
MATERIAL SEE BOM				
SEE BOM				