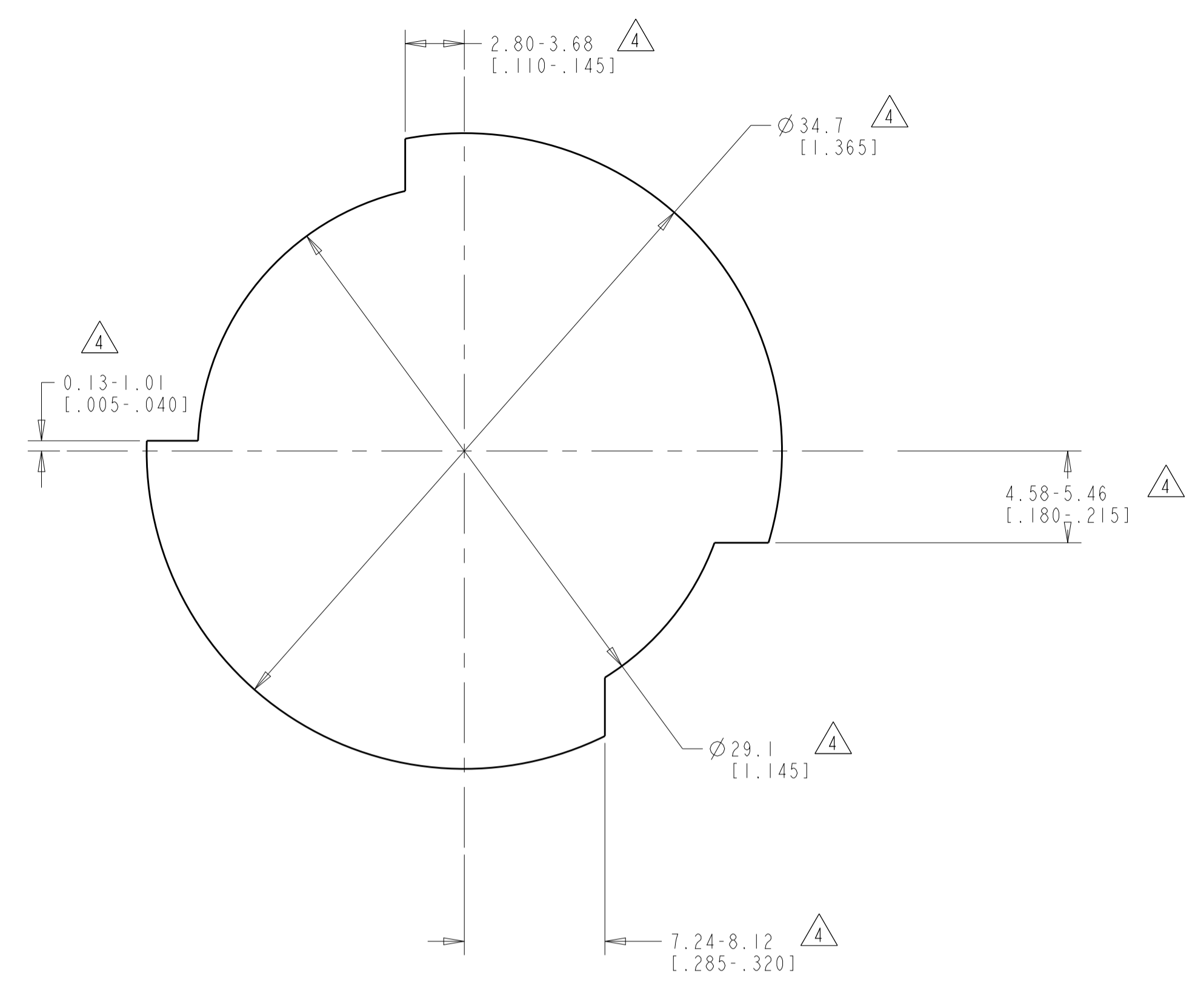
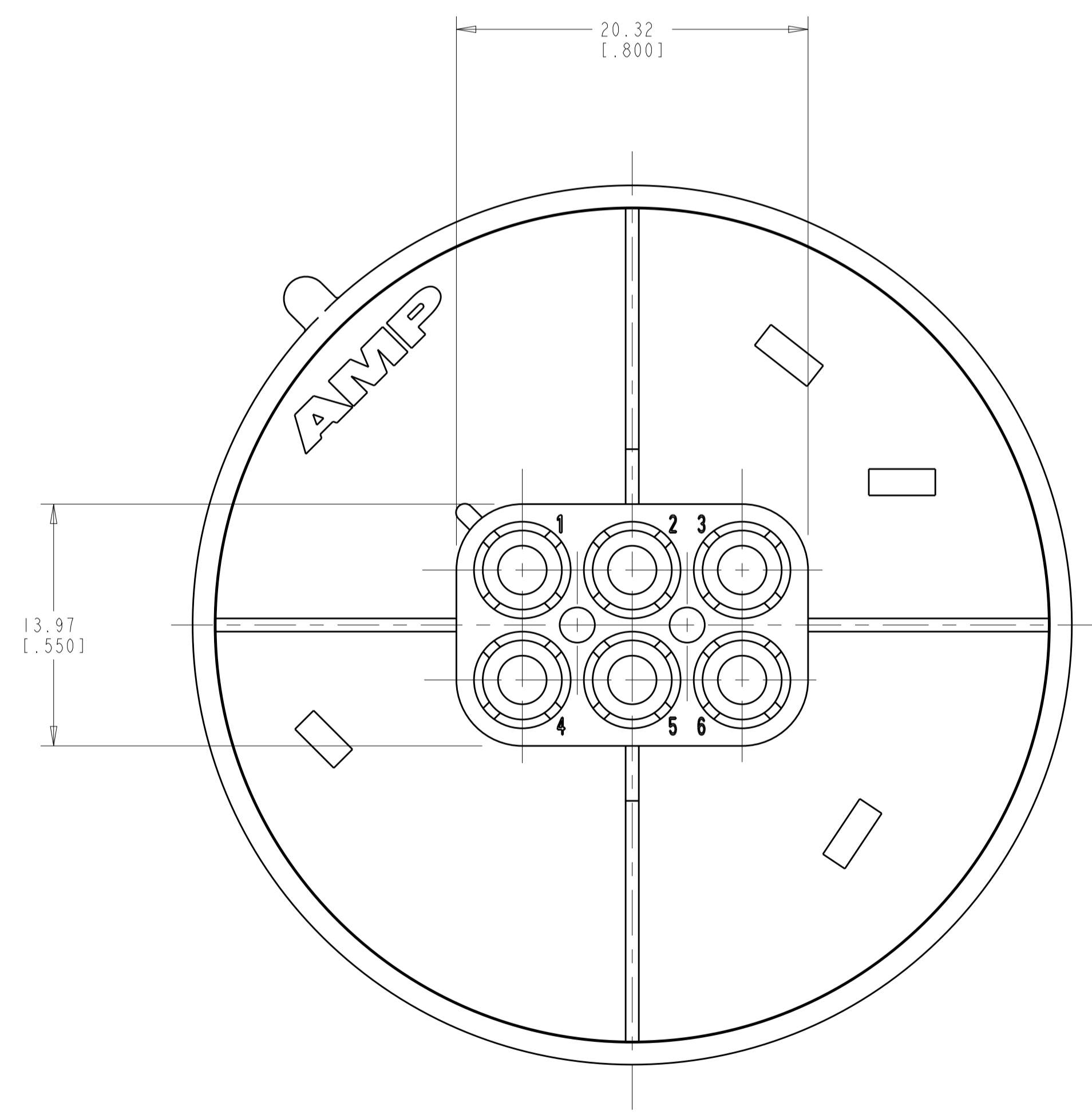
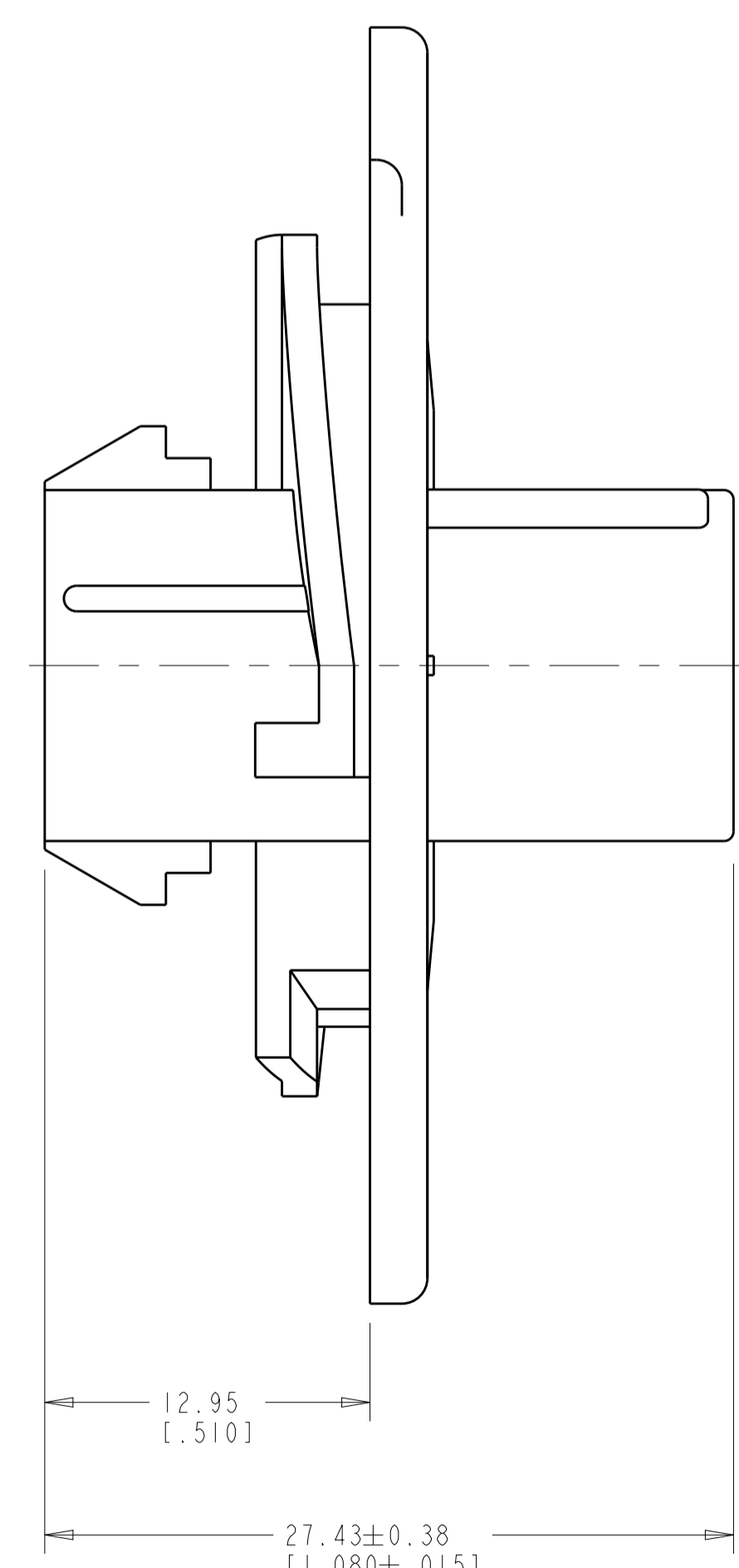
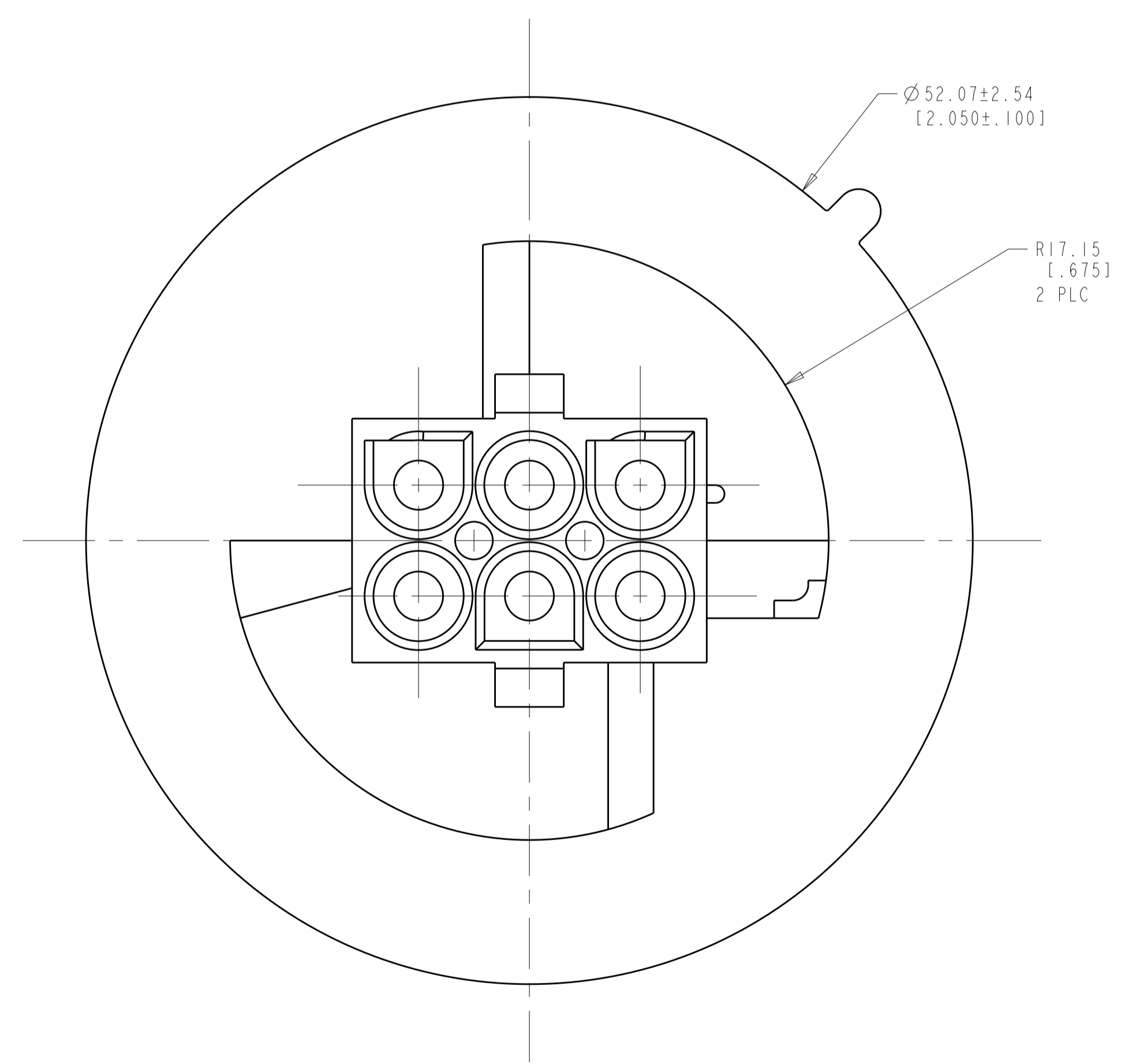
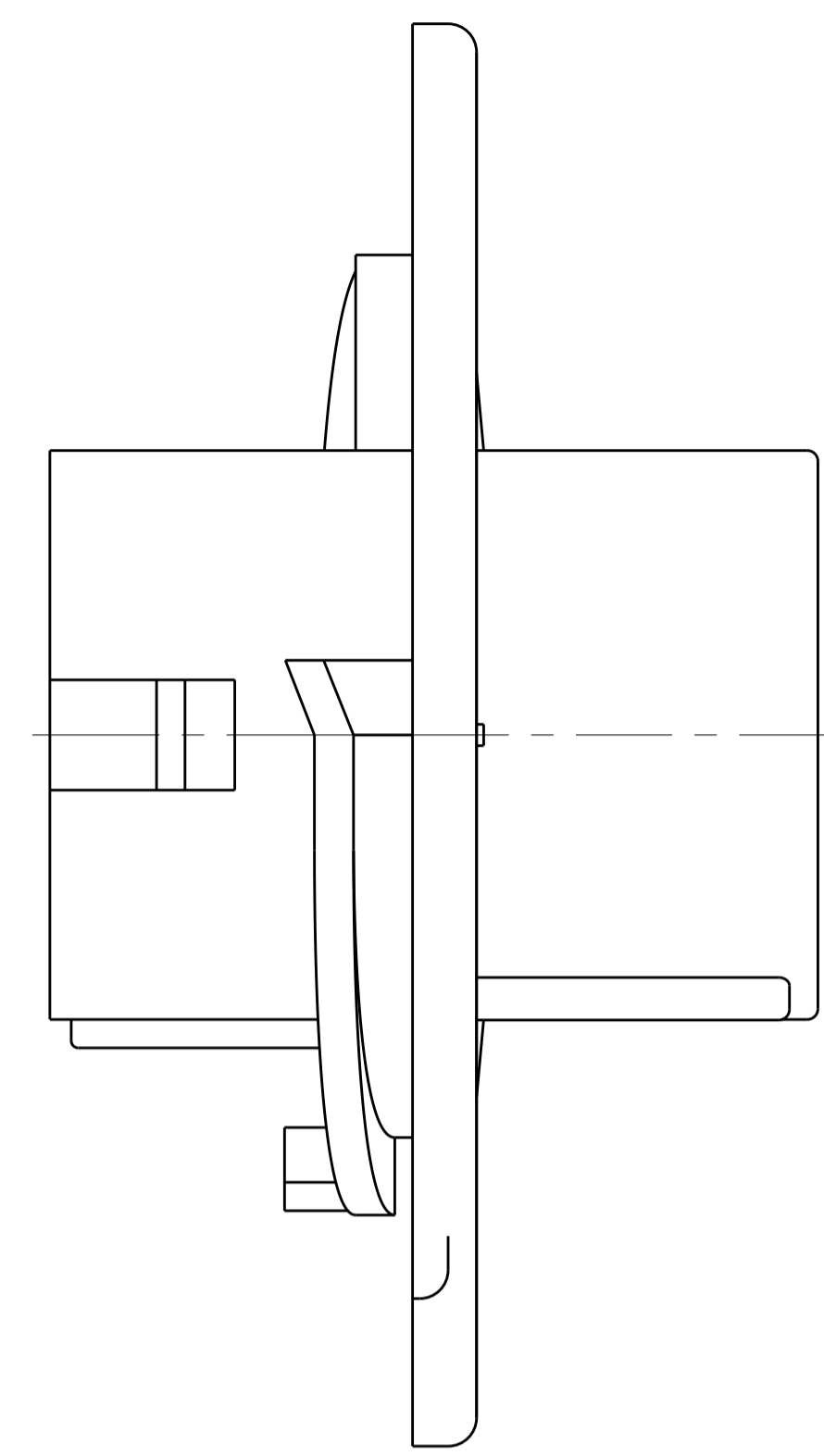


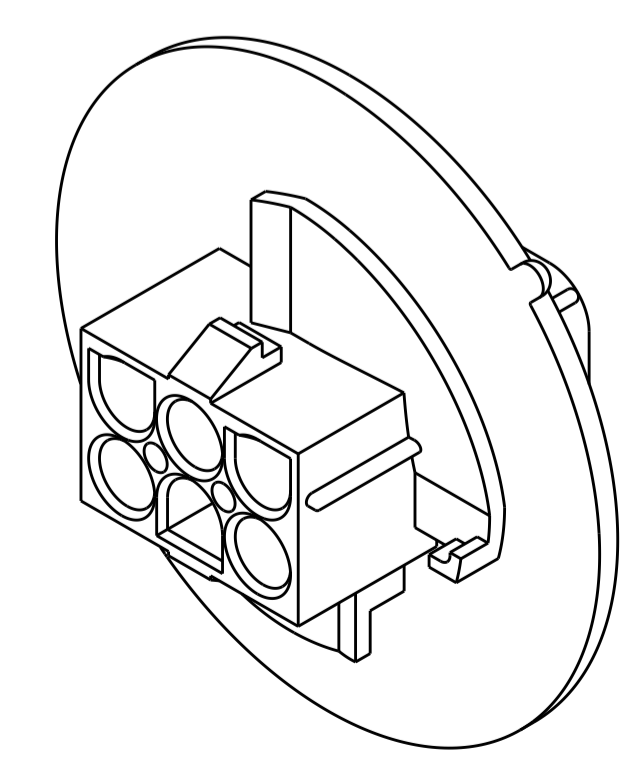
LOC		DIST		REVISIONS			
P	LTN	DESCRIPTION	DATE	DWN	APVD		
A		RELEASED PER ECO-17-018376	14DEC2017	RS	KR		



RECOMMENDED CUT OUT



- MATES WITH APPROPRIATE UNIVERSAL MATE-N-LOK™ PLUG.
 - RECOMMENDED PANEL THICKNESS 0.76 - 2.29 [.030 - .090].
 - PANEL MUST BE PUNCHED SO THAT THE HOUSING ENTERS THE PANEL IN THE SAME DIRECTION AS THE PUNCH.
- △ DIMENSIONS INDICATED ARE REFERENCE. ADDITIONAL GROWTH DUE TO SUBSEQUENT MOISTURE ABSORPTION MAY OCCUR



3-DIMENSIONAL MODEL
SCALE 2:1

NATURAL	1969881-1
COLOR	PART NUMBER

THIS DRAWING IS A CONTROLLED DOCUMENT.		DWN: R. SMITH 27-MARCH-2017	NAME: CAP. 6 CIRCUIT, UNIVERSAL MATE-N-LOK(TM), SPECIAL
DIMENSIONS: mm [INCHES]		CHK: K. RANDOLPH 27-MARCH-2017	
TOLERANCES UNLESS OTHERWISE SPECIFIED:		APVD: K. RANDOLPH 27-MARCH-2017	PRODUCT SPEC: 108-1031
0 PLC	±	APPLICATION SPEC: 114-1010	SIZE: A1
2 PLC	±0.511(.020)	WEIGHT: -	CAGE CODE: 00779
3 PLC	±	FINISH: -	DRAWING NO: C=1969881
4 PLC	±	ANGLES: 40° 30'	CUSTOMER DRAWING
5 PLC	±	MATERIAL: GWT VO NYLON	SCALE: 4:1
6 PLC	±		SHEET: 1 OF 1
ANGLES	±		REV: A

