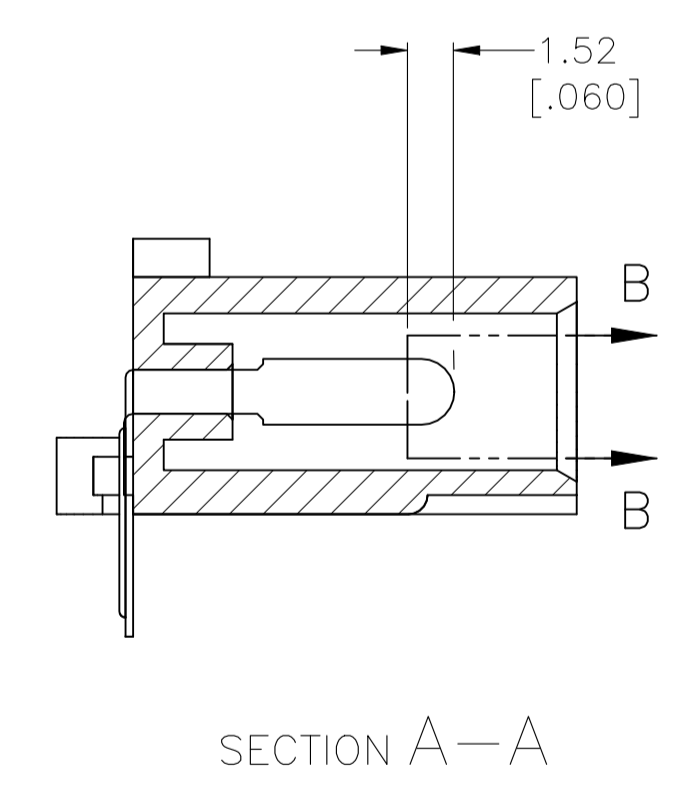
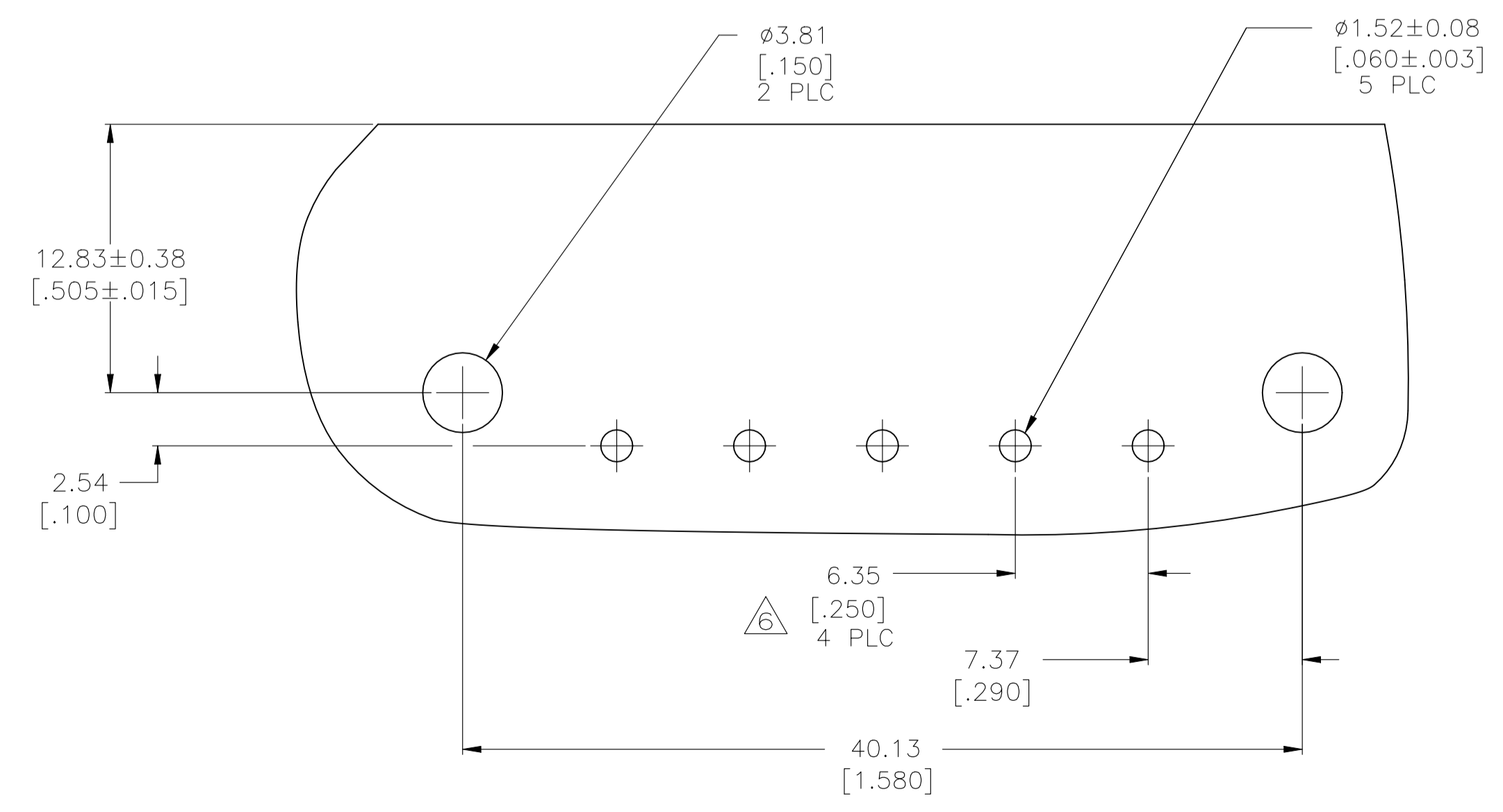
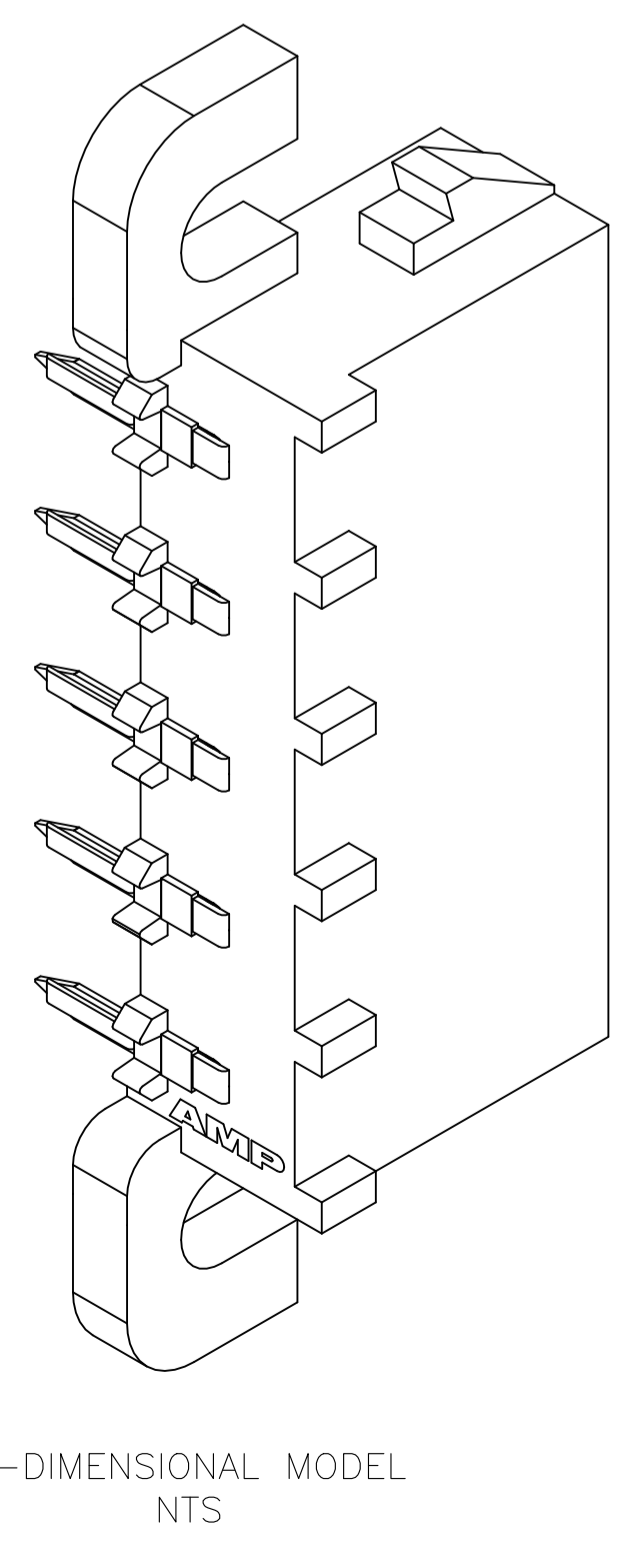
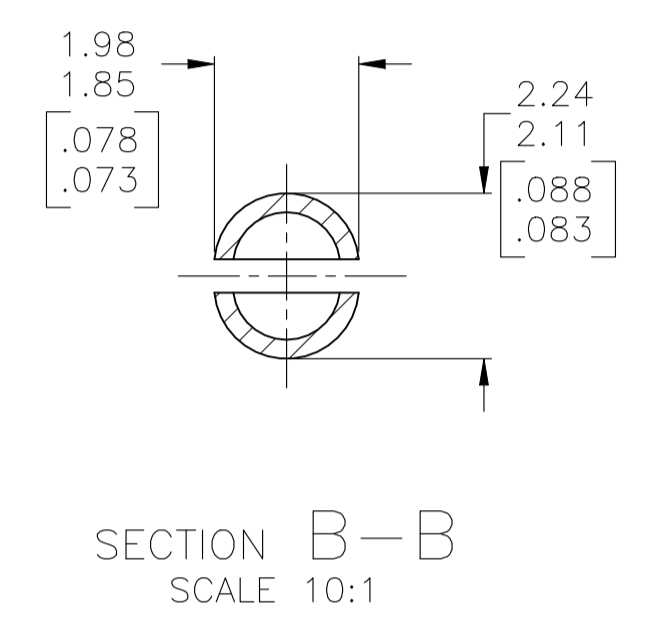
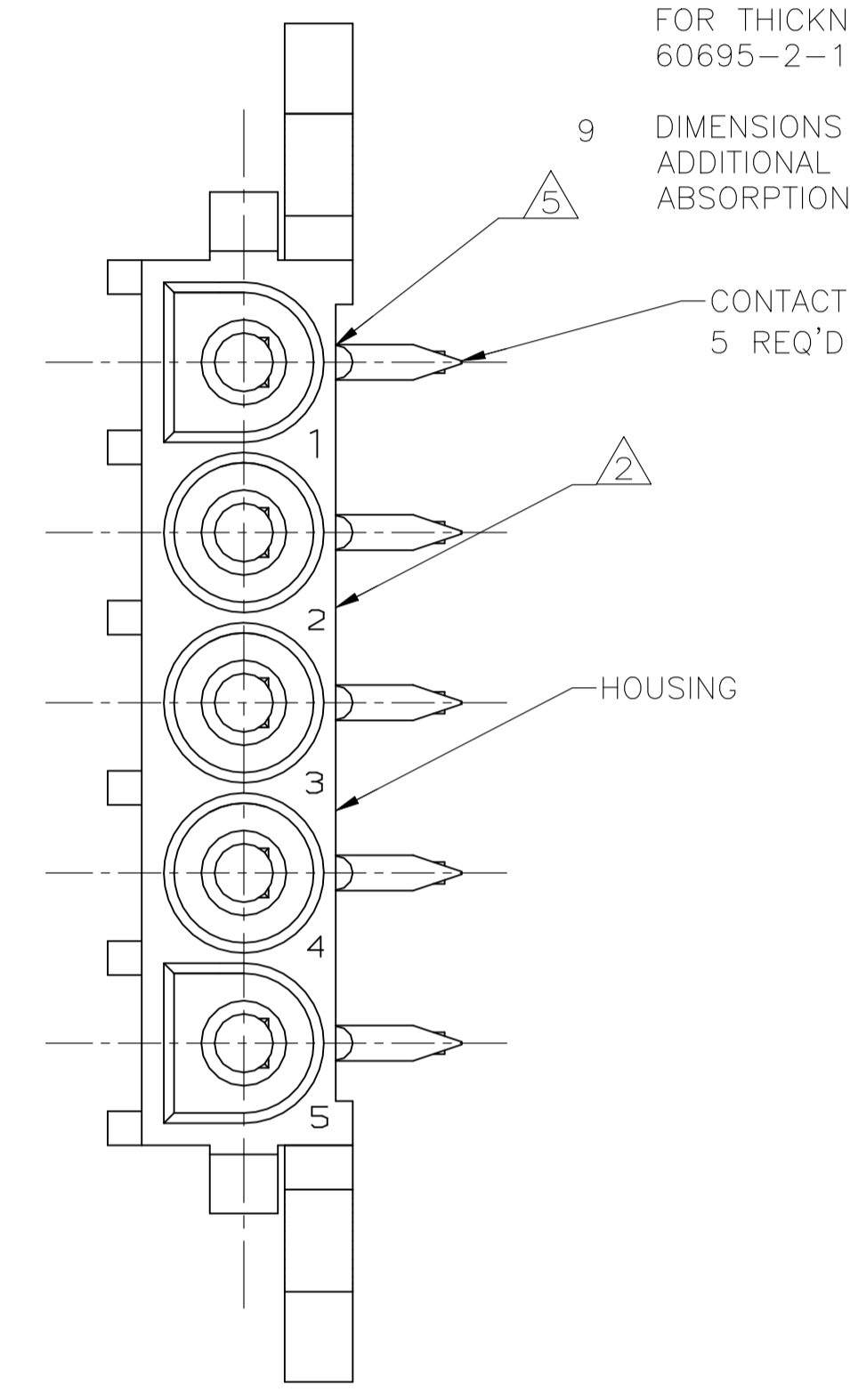
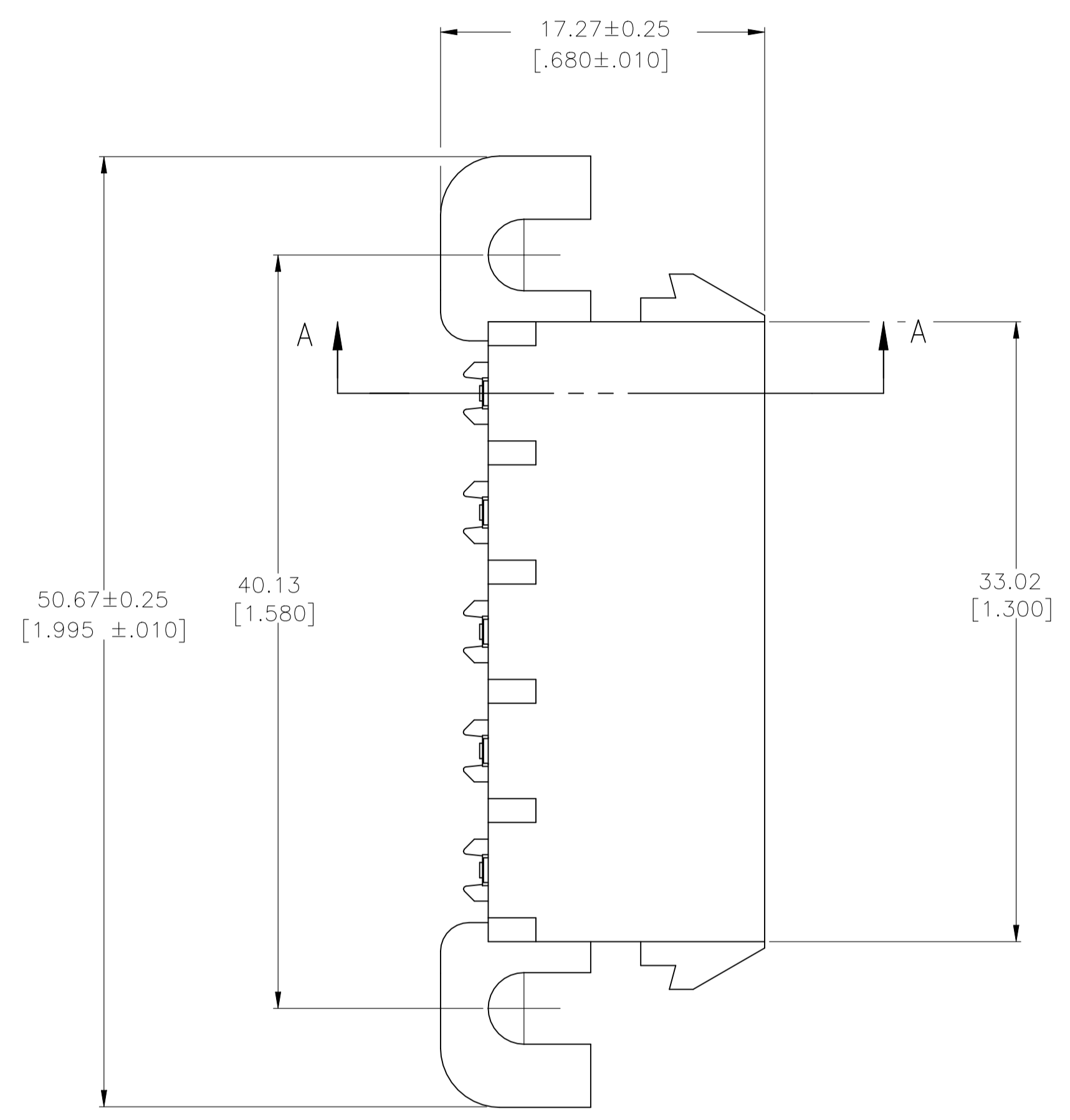
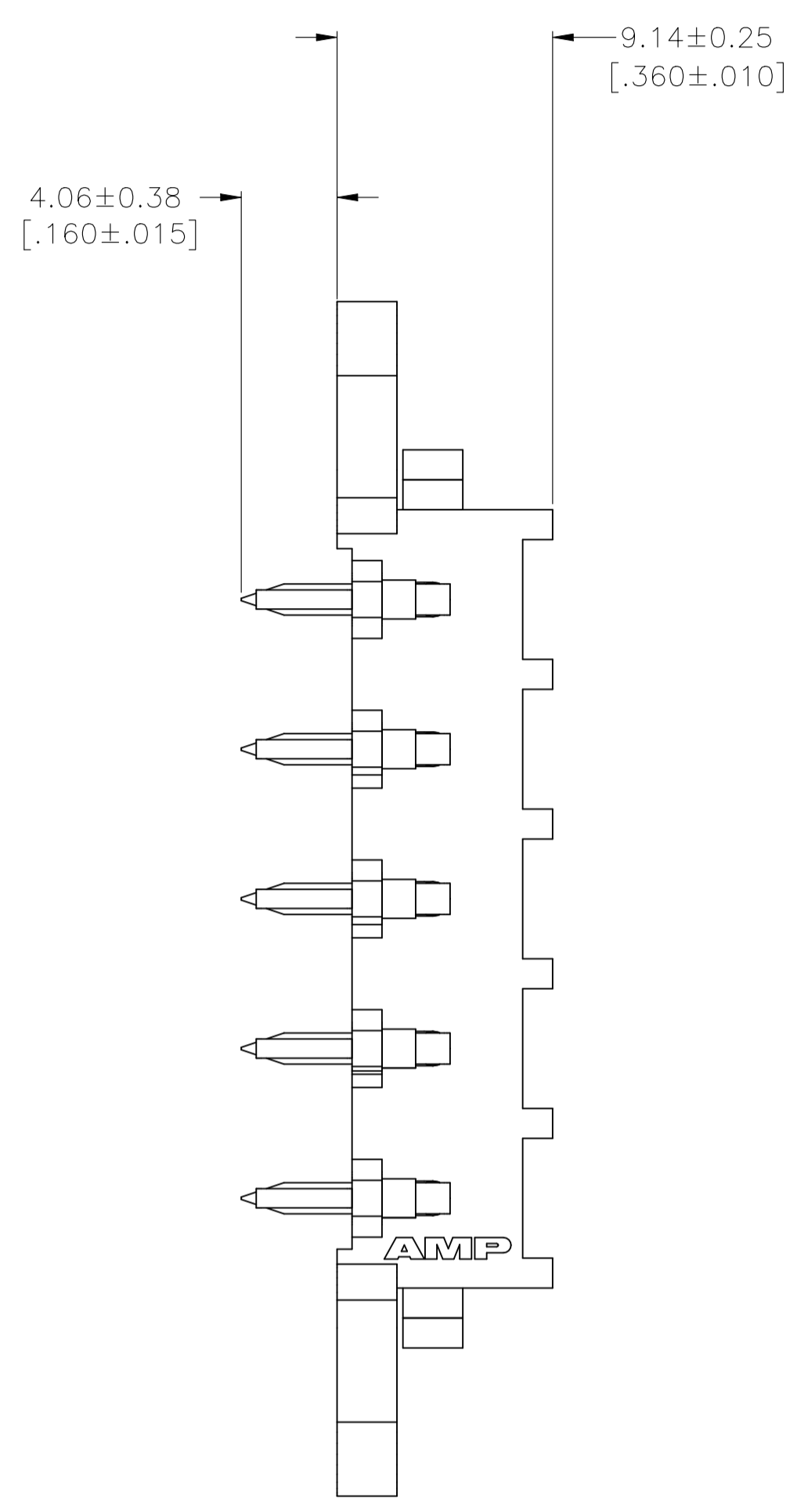


REVISIONS					
REV	DESCRIPTION	DATE	BY	CHK	APP'D
A1	REVISED PER ECR-21-119230	02NOV2021	SS	VS	

- 1 PARTS COMPLY WITH TE SOLDERABILITY SPECIFICATION 109-11-5.
- 2 CIRCUIT IDENTIFICATION CHARACTERS ARE ADJACENT TO THE INDICATED CAVITIES, BUT LOCATION AND ORIENTATION MAY DIFFER FROM PRINT.
- 3 TOLERANCE NON-CUMULATIVE
- 4 DIMENSIONS IN BRACKETS ARE IN INCHES.
- 5 OPTIONAL CONSTRUCTION MAY DELETE THIS RIB.
- 6 FLAMMABILITY UL V-0 FOR THICKNESS 0.4, 0.45, 0.8, 1.6, AND 3.0 PER IEC 60695-11-10.
- 7 GLOW WIRE FLAMMABILITY (GWI): 960°C FOR THICKNESS 0.45, 0.8, 1.6, AND 3.0 PER IEC 60695-2-12.
- 8 GLOW WIRE IGNITION (GWIT): 825°C FOR THICKNESS 0.45, 800°C FOR THICKNESS 0.8, 775°C FOR THICKNESS 1.6 AND 3.0 PER IEC 60695-2-13.
- 9 DIMENSIONS SHOWN REPRESENT PRODUCT IN DRY CONDITION. ADDITIONAL 2% GROWTH DUE TO END USE LOCATION MOISTURE ABSORPTION MAY OCCUR AND SHOULD BE ACCOUNTED FOR.



PH BRZ TIN	NYLON, UL V-0 GW	1969808-1
CONTACT	HOUSING	PART NUMBER

THIS DRAWING IS A CONTROLLED DOCUMENT.		DIN: PASVESH WARAD 02JAN2016		TE Connectivity	
DIMENSIONS: mm [INCHES]		CHK: WICKES, EVAN 02JAN2016		NAME: PIN HEADER ASSEMBLY, RIGHT ANGLE MOUNT, 5 POSITION, UNIVERSAL MATE-N-LOK (TM)	
TOLERANCES UNLESS OTHERWISE SPECIFIED:		APVD: WICKES, EVAN 02JAN2016		SIZE: A1	
0 PLC ± -		APPLICATION SPEC		CAGE CODE: 1969808	
1 PLC ± -		WEIGHT: 0.000000		SCALE: 4:1	
2 PLC ± -		MATERIAL: SEE TABLE		SHEET 1 of 1	
3 PLC ± 0.13(.005)		FINISH: SEE TABLE		REV A1	
4 PLC ± -		CUSTOMER DRAWING			
ANGLES ± 0°30'					