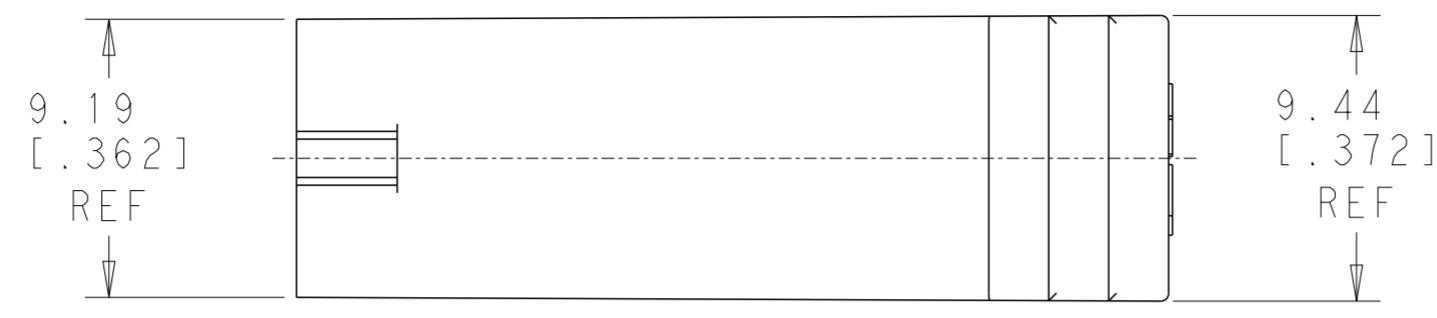
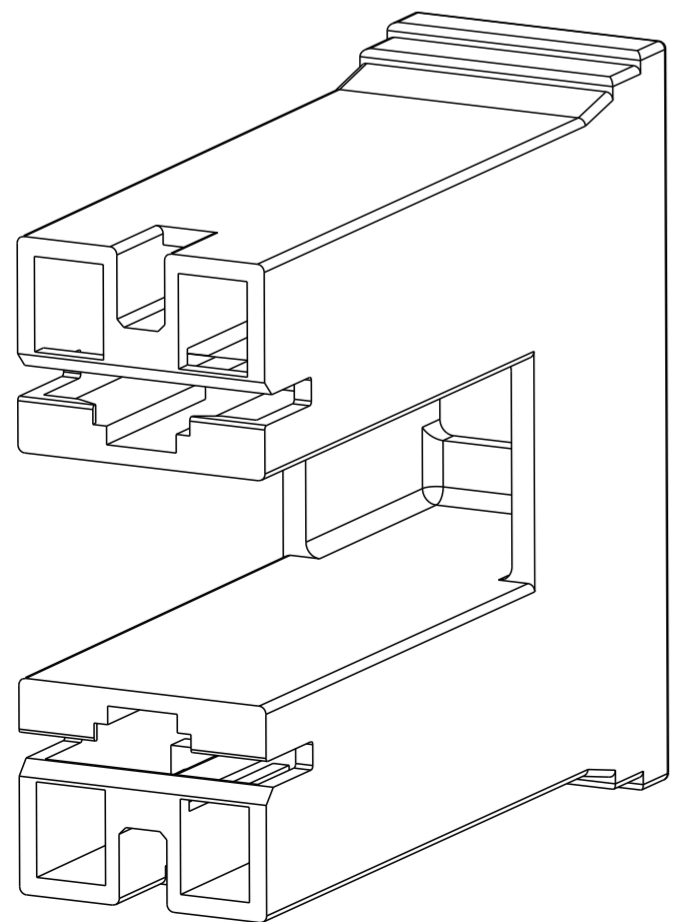
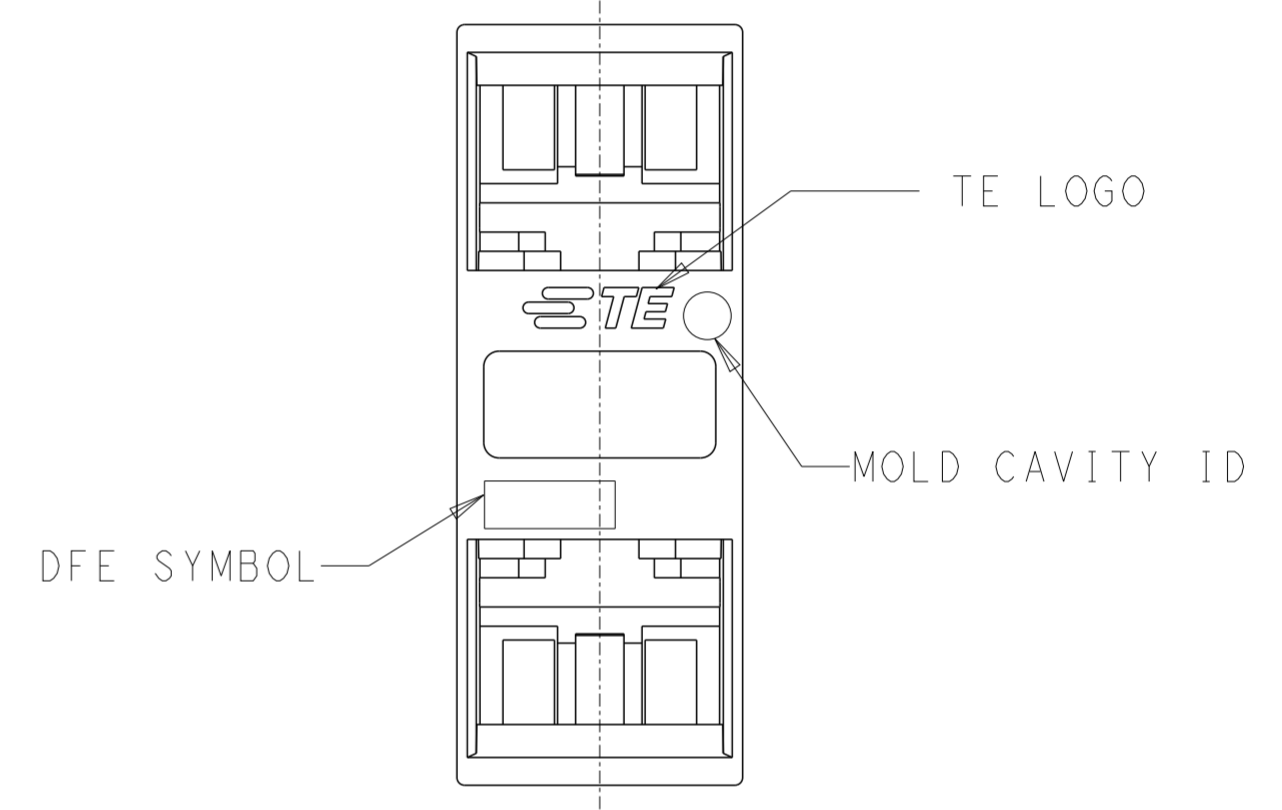
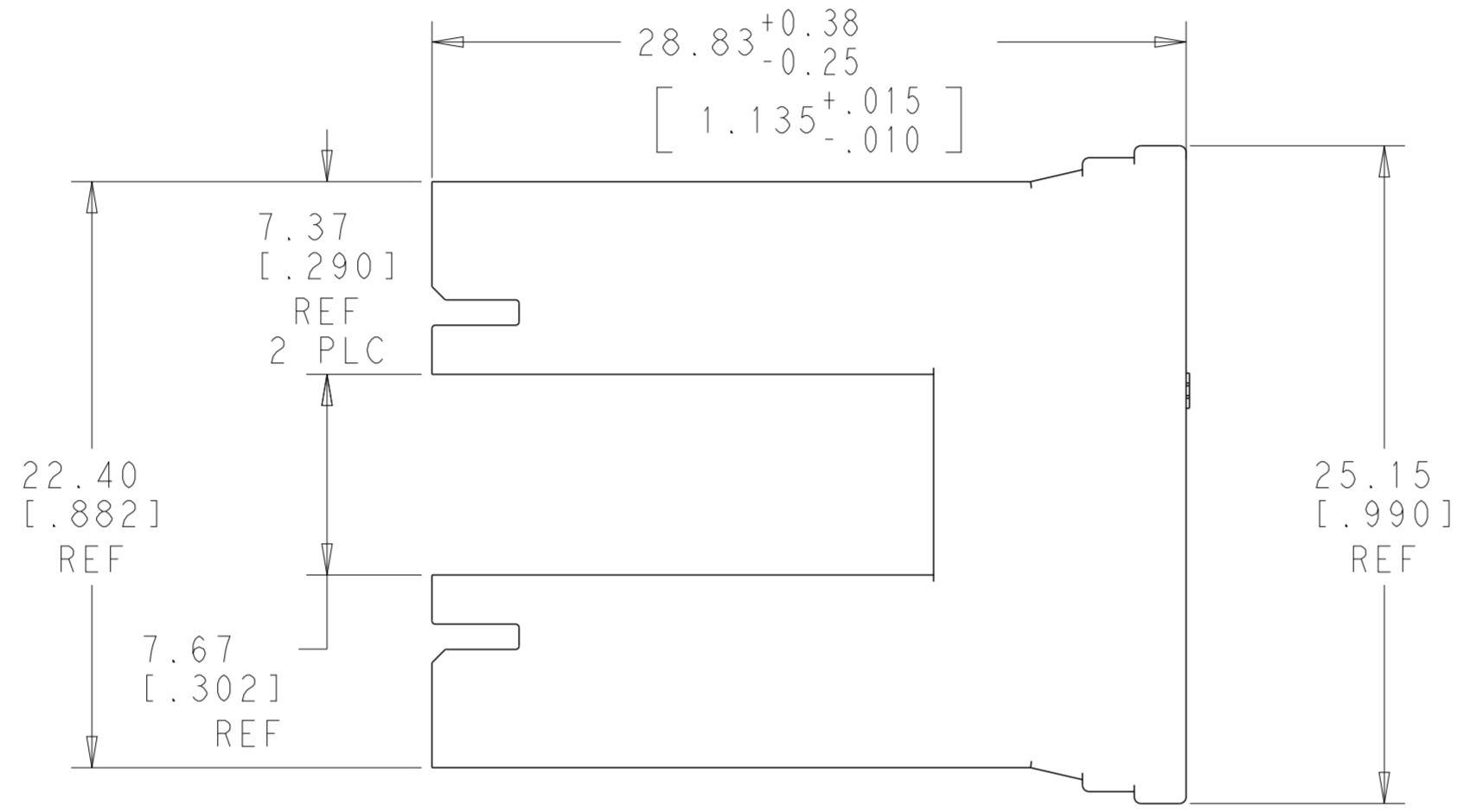
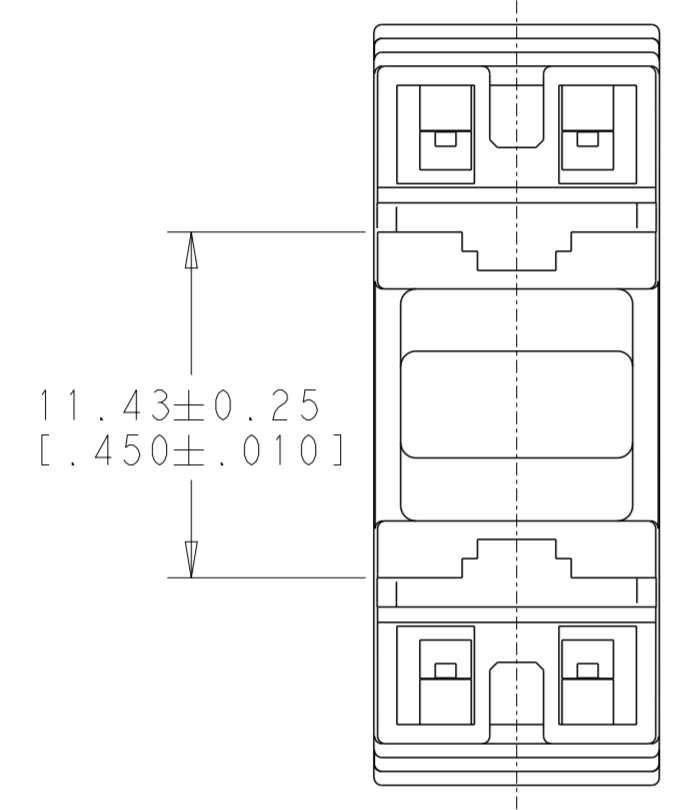


THIS DRAWING IS UNPUBLISHED. RELEASED FOR PUBLICATION  
 © COPYRIGHT copyright.d8te ALL RIGHTS RESERVED.

REVISIONS					
P	LTR	DESCRIPTION	DATE	DWN	APVD
	A	INITIAL RELEASE	05APR2016	PK	TD
	A1	REFER ECO-16-006367	26APR2016	PK	TD
	B1	REVISED PER ECR-23-175160	12MAY2023	DB	RE



1 THIS PART ACCEPTS 250 SERIES POSI-LOCK MKII TERMINALS SUCH AS P/N 170327-1, AWG #22-#18.



1969718-1  
PART NO.

THIS DRAWING IS A CONTROLLED DOCUMENT.		DWN JR RUTH 12-May-23	<b>STE</b> TE Connectivity	
DIMENSIONS: in		CHK DAVE HUMPHREY 29 JAN 15		
TOLERANCES UNLESS OTHERWISE SPECIFIED:		APVD DAVE HUMPHREY 29 JAN 15	NAME HOUSING, RECEPTACLE, POSITIVE-LOCK MKII, 250 SERIES 2 POSITION, INDICATOR LIGHT	
0 PLC ±		PRODUCT SPEC	SIZE	CAGE CODE
1 PLC ±		APPLICATION SPEC	A2	-
2 PLC ±0.25 [.010]		WEIGHT	DRAWING NO C-1969718	
3 PLC ±		CUSTOMER DRAWING	SCALE	SHEET
4 PLC ±			4:1	1 OF 1
ANGLES ±				REV B1
FINISH				
MATERIAL NYLON				
COLOR-NATURAL				