

THIS DRAWING IS UNPUBLISHED.

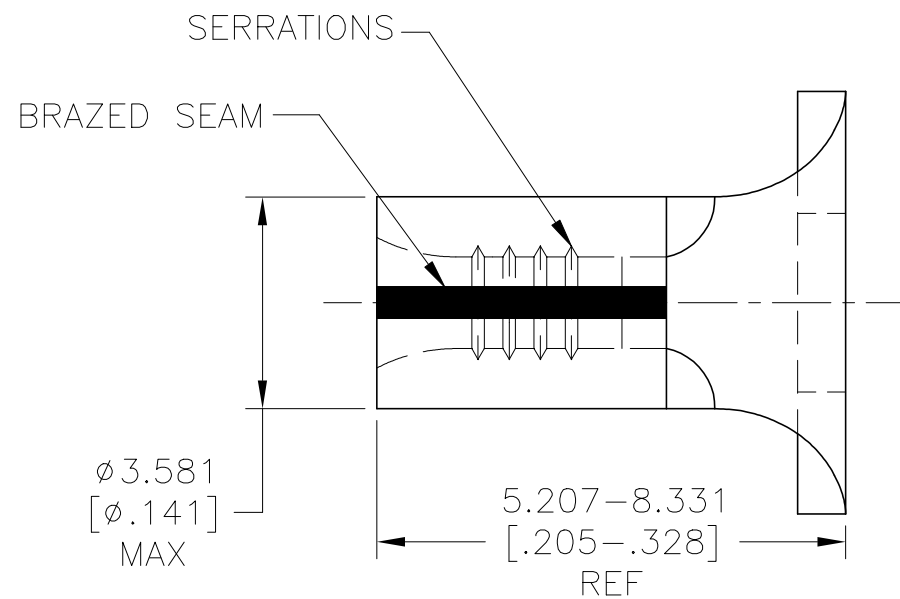
RELEASED FOR PUBLICATION

© COPYRIGHT - 1

ALL RIGHTS RESERVED.

REVISIONS

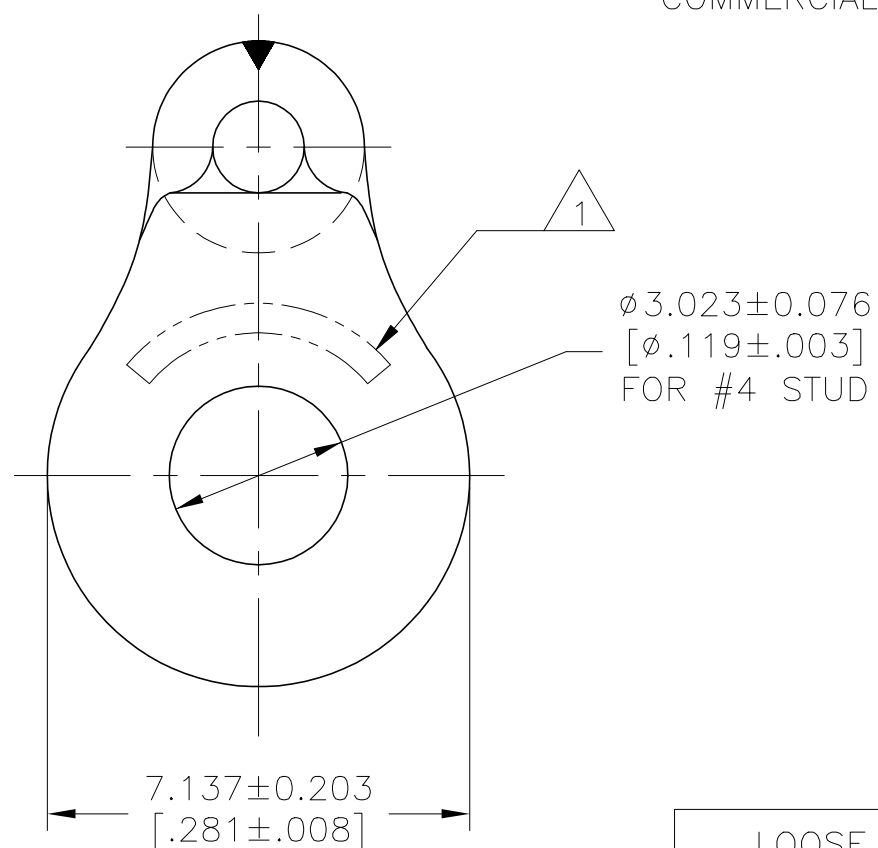
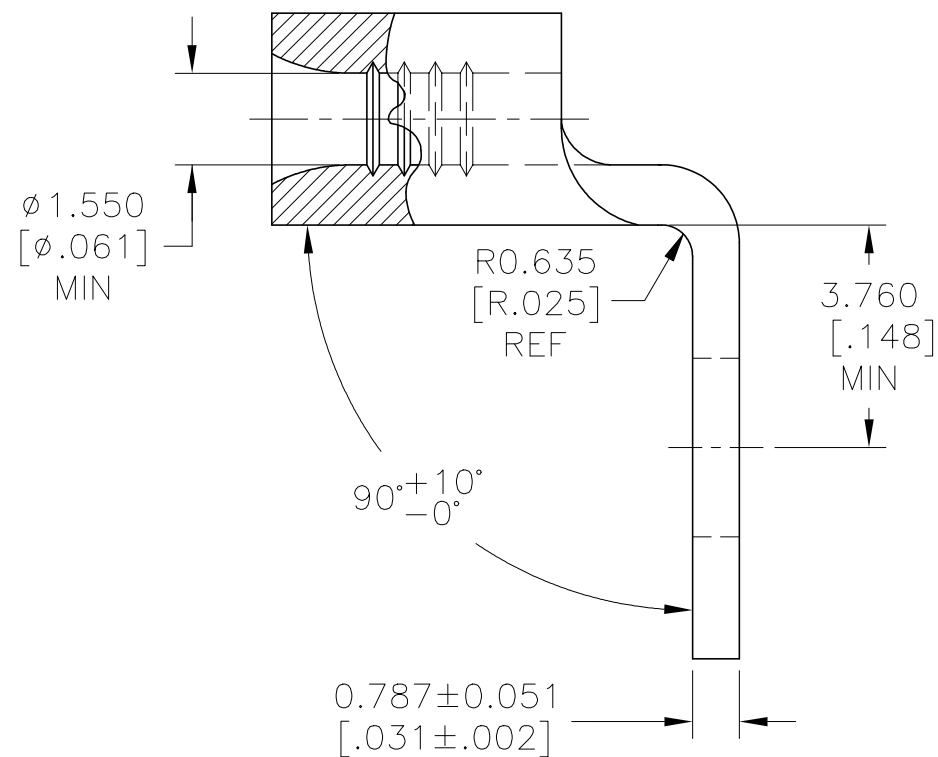
P	LTR	DESCRIPTION	DATE	DWN	APVD
	A	REVISED PER ECR-16-016003	24NOV2016	RS	DR
	A1	REVISED PER ECO-19-009566	02JUL2019	RS	DR



AMP
WIRE RANGE

22-16 AWG
STRANDED

1 STAMP AMP 22-18* APPROX AS SHOWN
22-16 TERMINALS ARE STAMPED 22-18 IN
ACCORDANCE WITH MILITARY SPEC MIL-SAE-AS7928
COMMERCIAL WIRE RANGE IS 22-16.



LOOSE PIECE	1000	1958483-1
PACKAGE TYPE	QTY	PART NUMBER

AMP INCORPORATED
CUSTOMER SERVICE SYSTEMS

MAX RECOMMENDED OPERATING
TEMPERATURE:
343°C [650°F]
MAX

FOR ADDITIONAL
PRODUCT INFORMATION OR
COPIES OF DRAWINGS
AND TECHNICAL DOCUMENTS

PRODUCT INFORMATION CENTER
1-800-522-6752

VOLTAGE RATING:
NOT APPLICABLE

FOR APPLICATION
TOOLING INFORMATION

TOOLING ASSISTANCE CENTER
1-800-722-1111

WIRE CROSS SECTIONAL AREA RANGE:
0.26-1.65mm² [509-3260] CIR MILS
STRANDED

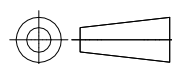
FOR ORDER ENTRY

1-800-526-5142

THIS DRAWING IS A CONTROLLED DOCUMENT FOR
TE INCORPORATED. IT IS SUBJECT TO CHANGE
AND THE CONTROLLING ENGINEERING ORGANIZATION
SHOULD BE CONTACTED FOR THE LATEST REVISION.

THIS DRAWING IS A CONTROLLED DOCUMENT.

DIMENSIONS:
mm [INCHES]



TOLERANCES UNLESS
OTHERWISE SPECIFIED:

- 0 PLC ± -
- 1 PLC ± -
- 2 PLC ± -
- 3 PLC ± -
- 4 PLC ± -
- ANGLES ± -

MATERIAL
COPPER PER
ASTM B-152
ANNEALED

FINISH
NICKEL PLATE 0.00762
[.00030] MIN. EXT. THK.
PER SAE AMS QQ-N-290

DWN 28JAN2015
NAGALAKSHMI K

CHK 28JAN2015
ROHDE DANIEL

APVD 28JAN2015
ROHDE DANIEL

PRODUCT SPEC

108-32046

APPLICATION SPEC

114-2162

WEIGHT

CUSTOMER DRAWING



NAME
TERMINAL, RING TONGUE,
BENT 90°, STRATO-THERM, HR
22-16 AWG

SIZE CAGE CODE DRAWING NO RESTRICTED TO

A3 00779 C=1958483 -

SCALE 8:1 SHEET 1 OF 1 REV A1