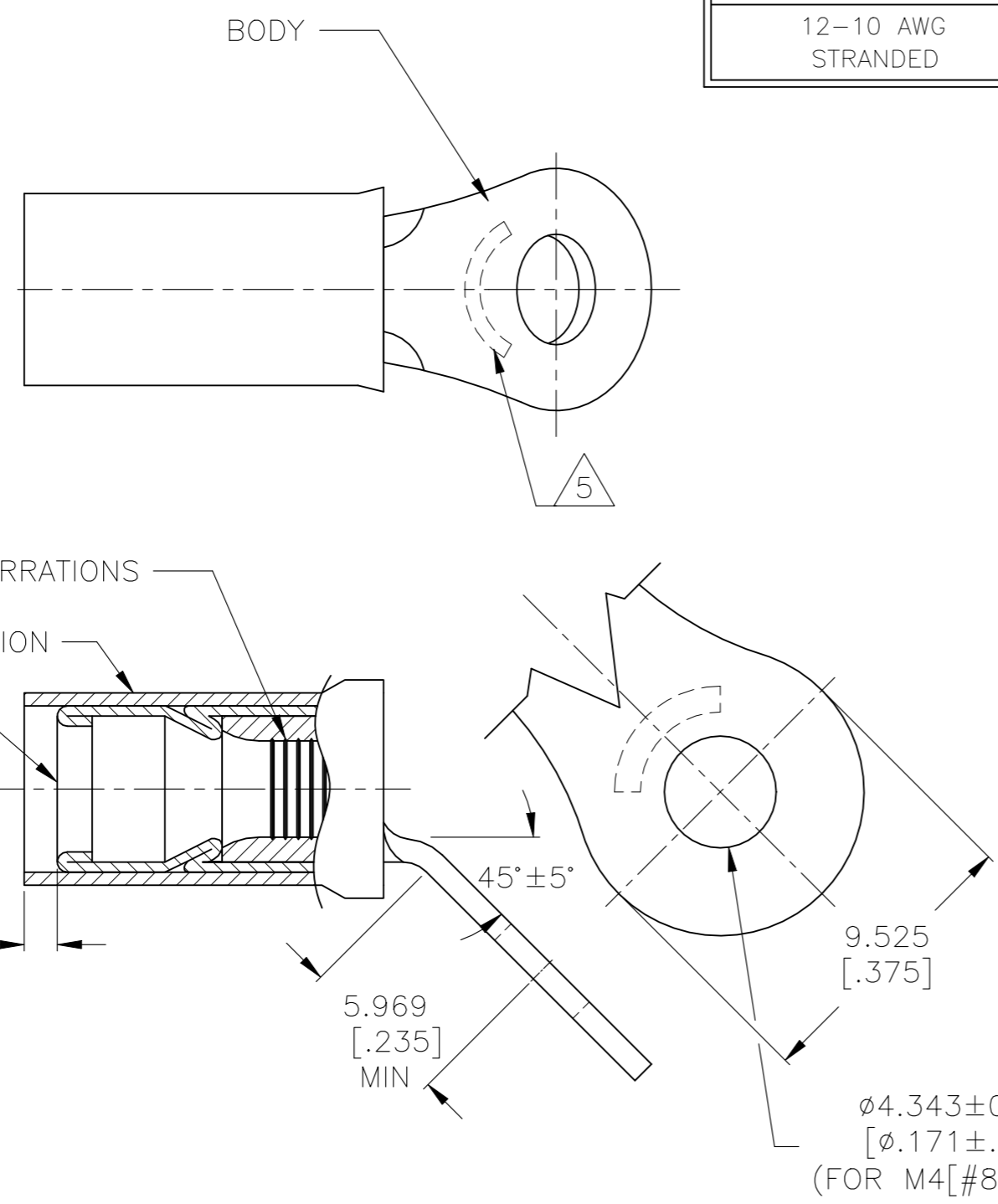


| REVISIONS | | | | |
|-----------|---------------|-------------|-----------|--------|
| P | LTR | DESCRIPTION | DATE | APVD |
| B1 | ECR-22-138429 | | 19MAY2022 | LP DSC |

AMP
WIRE RANGE

12-10 AWG
STRANDED



- 1 FOR $\phi 2.590[\phi.102]$ TO $\phi 5.435[\phi.214]$ WIRE INSULATION.
- 2 BODY MATERIAL THK: $0.990 \pm 0.050[.039 \pm .002]$
- 3 MATERIAL:
BODY & SLEEVE: COPPER PER ASTM B152
INSULATION: PTFE PER ASTM D4895.
- 4 FINISH:
BODY $0.0076[.00030]$, SLEEVE $0.001651[.000065]$ AVG EXT THK
NICKEL PLATE PER SAE AMS-QQ-N-290.
INSULATION COLOR: BLACK.
- 5 STAMP AMP 12-10* APPROX AS SHOWN.

| | | |
|-----|--------------|-----------|
| 500 | LOOSE PIECE | 1958451-1 |
| QTY | PACKAGE TYPE | PART NO |

AMP INCORPORATED
CUSTOMER SERVICE SYSTEMS

FOR ADDITIONAL PRODUCT INFORMATION OR COPIES OF DRAWINGS AND TECHNICAL DOCUMENTS
PRODUCT INFORMATION CENTER
1-800-522-6752

FOR APPLICATION TOOLING INFORMATION
TOOLING ASSISTANCE CENTER
1-800-722-1111

FOR ORDER ENTRY
1-800-526-5142

MAX RECOMMENDED OPERATING TEMPERATURE:
288°C[550°F]

VOLTAGE RATING:
300V MAX

WIRE CROSS SECTIONAL AREA RANGE:
 $2.62-6.64\text{mm}^2$ [5,180-13,100] CIR MIL STRANDED

THIS DRAWING IS A CONTROLLED DOCUMENT.

| | |
|----------------------------|--|
| DIMENSIONS: mm [INCHES] | TOLERANCES UNLESS OTHERWISE SPECIFIED: |
| | 0 PLC ± - |
| | 1 PLC ± - |
| | 2 PLC ± - |
| | 3 PLC ± 0.127[.005] |
| | 4 PLC ± - |
| | ANGLES ± - |
| MATERIAL | FINISH |

| | |
|------------------|-----------|
| DWN | 13APR2013 |
| KIRAN HOLAL | |
| CHK | 13APR2013 |
| ROHDE DANIEL | |
| APVD | 13APR2013 |
| ROHDE DANIEL | |
| PRODUCT SPEC | |
| APPLICATION SPEC | |
| 114-2162 | |
| WEIGHT | - |

| | | | |
|--|-----------|------------|---------------------|
| STE TE Connectivity | | | |
| NAME TERMINAL, RING TONGUE, PIDG, STRATO-THERM, WIRE SIZE: 12-10 AWG, 45 DEG BEND | | | |
| SIZE | CAGE CODE | DRAWING NO | RESTRICTED TO |
| A3 | 00779 | C-1958451 | - |
| CUSTOMER DRAWING | | SCALE 4:1 | SHEET 1 OF 1 REV B1 |