

THIS DRAWING IS UNPUBLISHED.

RELEASED FOR PUBLICATION

20

© COPYRIGHT 20 BY -

ALL RIGHTS RESERVED.

REVISIONS

P	LTR	DESCRIPTION	DATE	DWN	APVD
	A1	REVISED(ECR-13-012673)	05. SEP. '13	CJ	HG
	A2	REVISED(ECR-20-011452)	13. AUG. '20	JH	GC

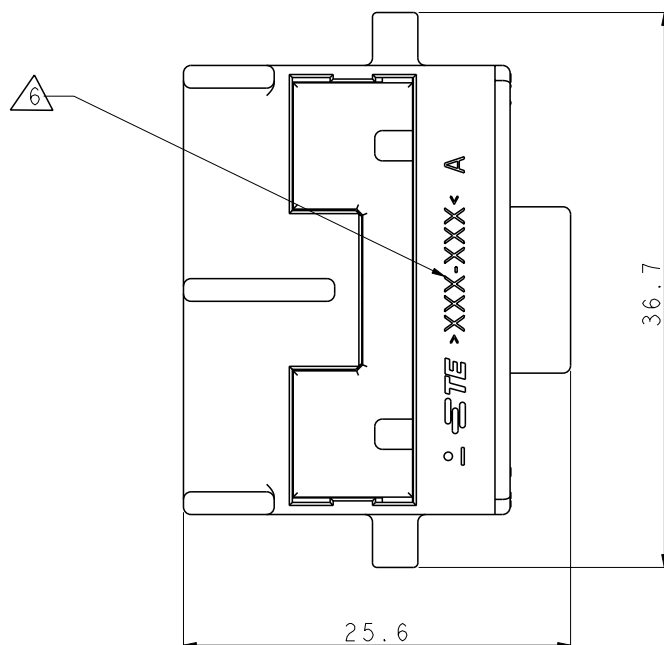
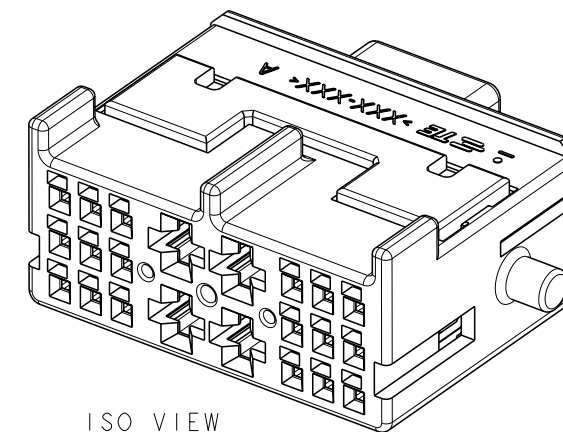
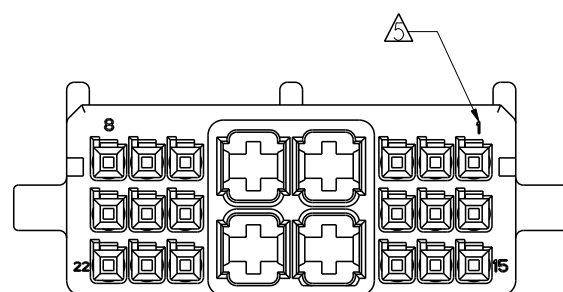
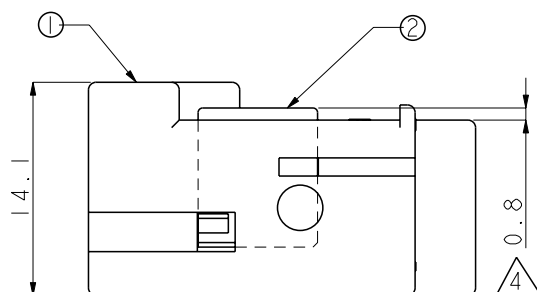
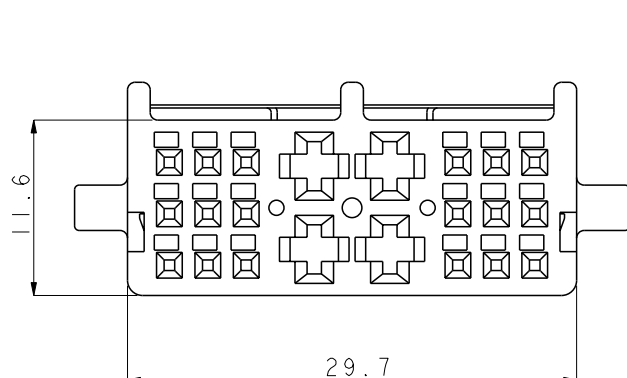


TABLE 1. APPLICABLE REC. CONTACT.

REC.	PART NO.	WIRE RANGE(mm ²)	INSULATION DIA. (mm) (FLR)
MQS (0.64)	1355717	0.14-0.22	0.9-1.2
	928999	0.2-0.5	0.9-1.6
	963715	0.5-0.75	1.6-1.9
MCP 2.8	A2 1564982	0.2-0.35	1.1-1.4
	1241388	0.5-1.0	1.4-2.1
	1241390	1.0-2.5	2.2-3.0
	968853	2.5-4.0	3.0-3.7



ISO VIEW



NOTE ;

- GENERAL TOLERANCE : ± 0.3 , $\pm 3.0^\circ$
- APPLICABLE REC. CONTACT : SEE TABLE 1.
- THE MATING CAP ASS'Y P/N : 1897540
- DELIVERY CONDITION : TPA 1'ST LOCKING.
- CURCUIT NO.
- MATERIAL ID MARK
 - 1897543-2 : >PBT-GF15<
 - 1897543-1 : >PA66-GF10<
- APPLICATION
 - 1897543-2 : FOR IN-LINE CONNECTOR
 - 1897543-1 : FOR TRANSMISSION CONNECTOR

PLUG HSG ASS'Y	PLUG HSG ASS'Y	DESCRIPTION	REMARK
1897543-1	1897543-2	ASS'Y P/N	

NO.	PART NO.	DESCRIPTION	MATERIAL	COLOR	Q'TY
2	1897545-6	PLUG DBL	PA66-GF10	RED	1
	1897545-1		PBT	WHITE	1
1	1897544-1	PLUG HSG	PA66-GF10	NATURAL	1
	1897544-2		PBT-GF15	BLACK	1

THIS DRAWING IS A CONTROLLED DOCUMENT.

DIMENSIONS: mm

TOLERANCES UNLESS OTHERWISE SPECIFIED:

0 PLC	±
1 PLC	±0.1
2 PLC	±0.01
3 PLC	±0.001
4 PLC	±0.0001
ANGLES	±

MATERIAL: - FINISH: -

DWN: CJ CHOI
 CHK: KT LIM
 APVD: HG CHO

PRODUCT SPEC: -
 APPLICATION SPEC: -
 WEIGHT: -

TE TE Connectivity

NAME: -
 HYB(MQS/MCP2.8)22P PLUG HSG ASS'Y

SIZE: A300779 CAGE CODE: 1897543 DRAWING NO: 1897543 RESTRICTED TO: -

CUSTOMER DRAWING SCALE: 2:1 SHEET: 1 OF 1 REV: A2