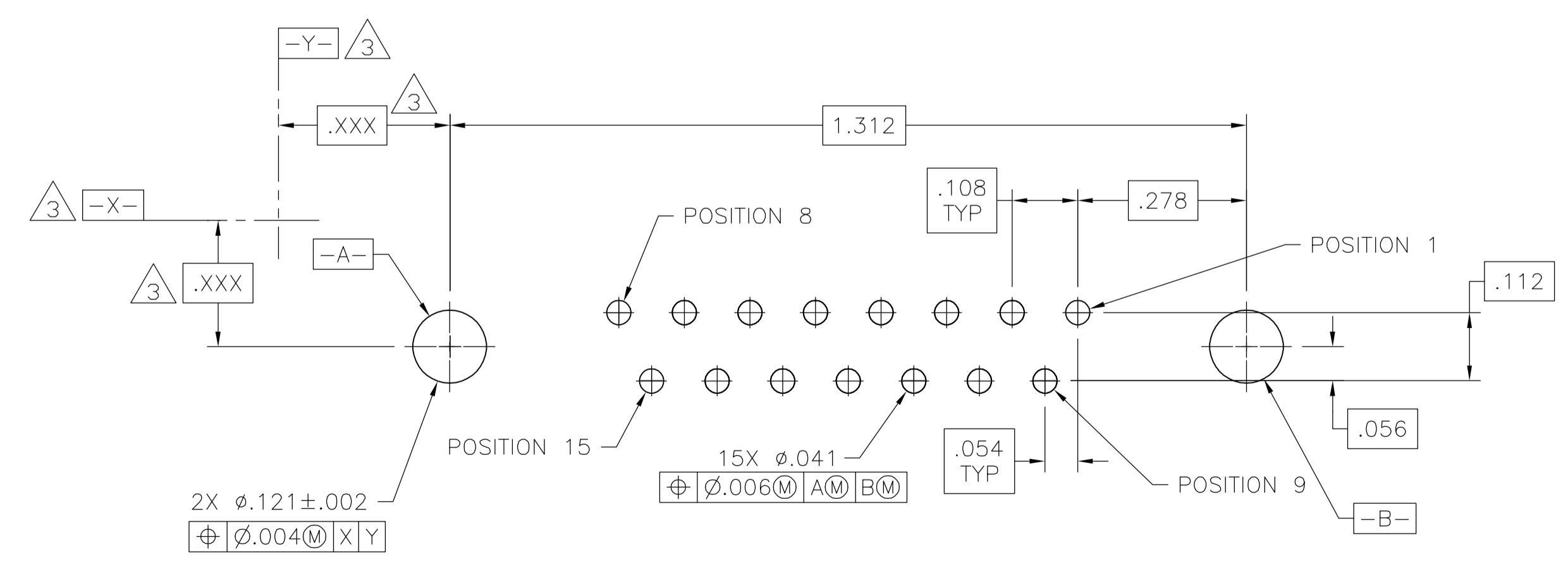
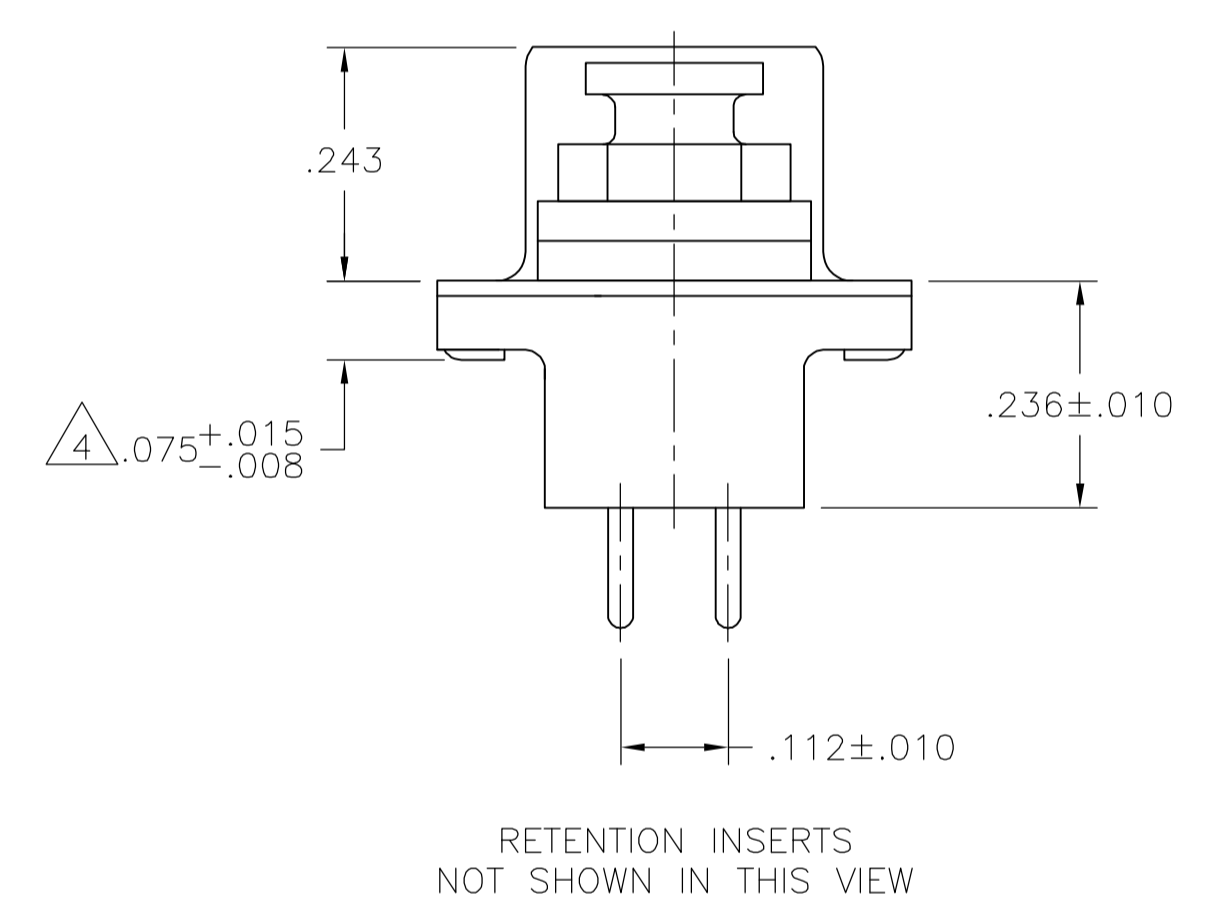
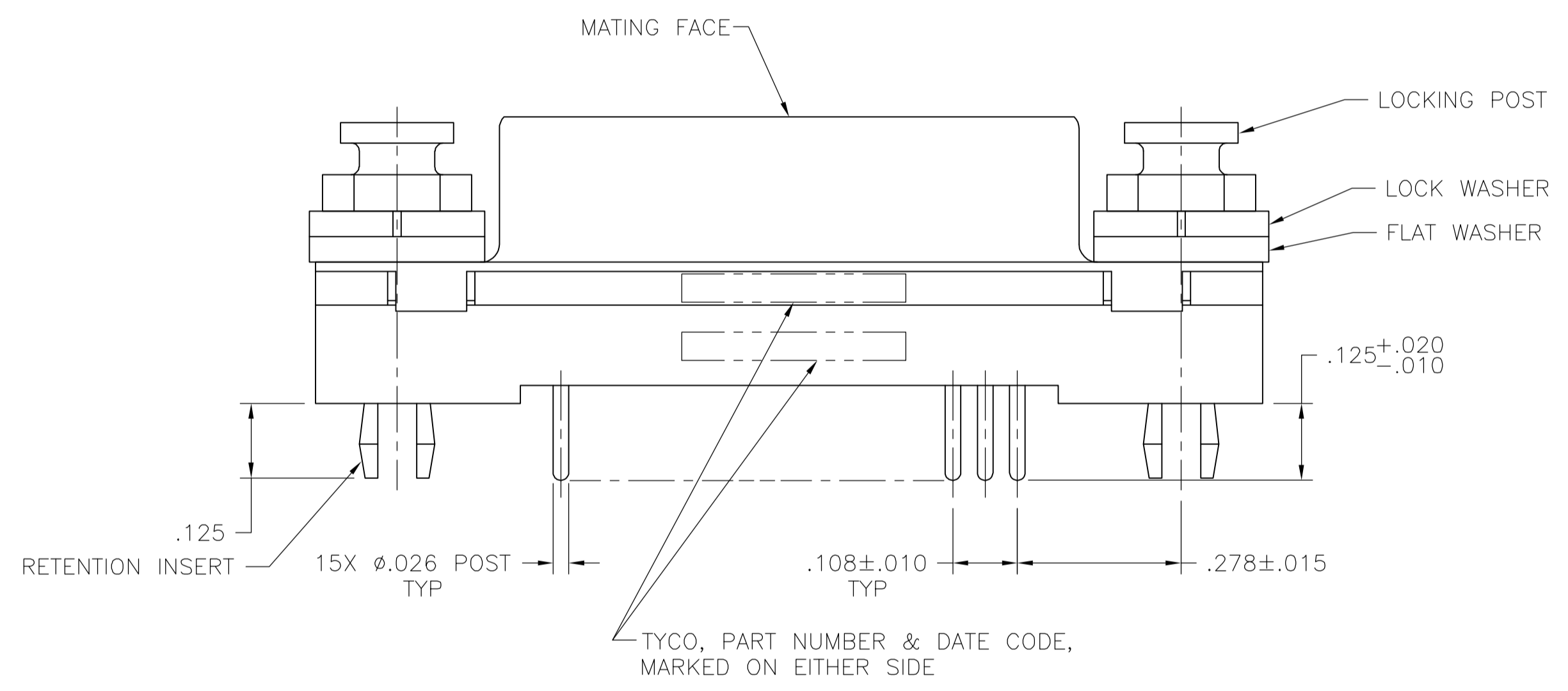


- 1 HOUSING: FLAME RETARDANT 94V-0 RATED THERMOPLASTIC, COLOR BLACK.
SHELL: CARBON STEEL.
CONTACTS: PHOS BRONZE.
RETENTION INSERTS: BRASS.
LOCKING POSTS, FLAT WASHERS & LOCK WASHERS: CARBON STEEL.
- 2 SHELL: .000200 MIN TIN OVER .000100 MIN COPPER.
RETENTION INSERTS: .000150 MIN TIN OVER .000100 MIN COPPER.
CONTACTS: .000030 MIN GOLD FOR LENGTH OF .100 MIN FROM MATING END, .000100 MIN TIN ON TERMINATION END, ALL OVER .000050 MIN NICKEL ON ENTIRE CONTACT.
LOCKING POSTS, FLAT WASHERS & LOCK WASHERS: .000200 MIN ZINC PLATE WITH CLEAR CHROMATE COATING.
- 3 DATUMS AND BASIC DIMENSIONS ESTABLISHED BY CUSTOMER.
- 4 .110 MAX IN SHELL TAB CLINCH AREAS.



PC BOARD MOUNTING DIMENSIONS
 CONNECTOR SIDE OF BOARD .062 PC BOARD THICKNESS

1888214-1
 PART NUMBER

THIS DRAWING IS A CONTROLLED DOCUMENT.		DIN J.GERACE 13APR06		Tyco Electronics Corporation Harrisburg, Pa 17105-3608	
DIMENSIONS: INCHES		CHK S.BOLASH 13APR06		APVD M.WALMSLEY 13APR06	NAME
TOLERANCES UNLESS OTHERWISE SPECIFIED:		0 PLC ± -	PRODUCT SPEC	SIZE	108-40025
		1 PLC ± -	APPLICATION SPEC	SCALE	114-40023
		2 PLC ± -	WEIGHT	CAGE CODE	100779
		3 PLC ± .005	RESTRICTED TO	DRAWING NO	1888214
		4 PLC ± -		SCALE	5:1
		ANGLES ± ± -		SHEET	1 OF 1
MATERIAL 1		FINISH 2	CUSTOMER DRAWING	REV	A