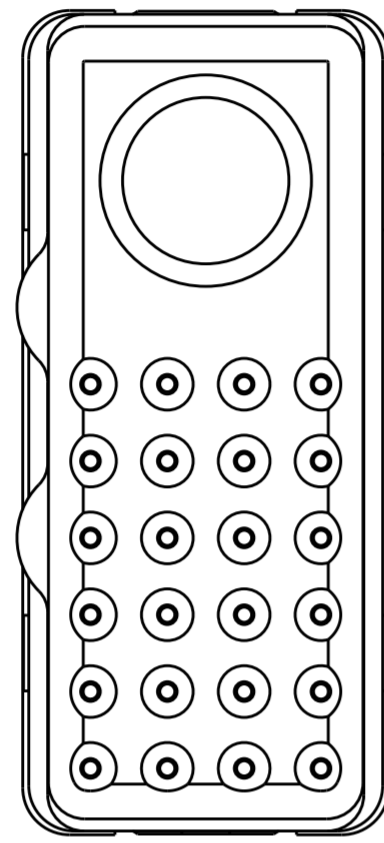
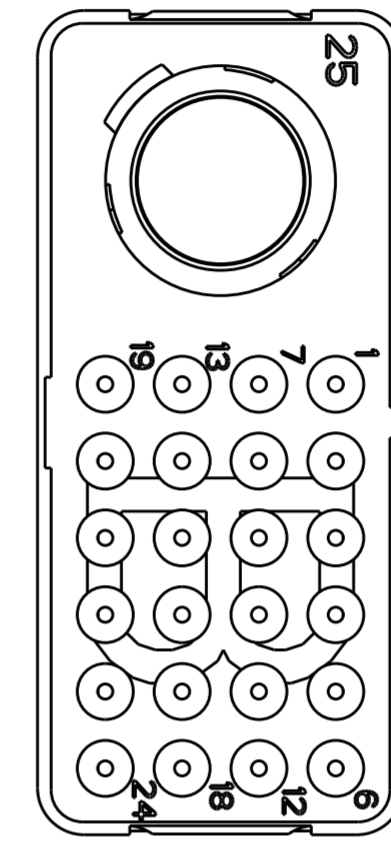
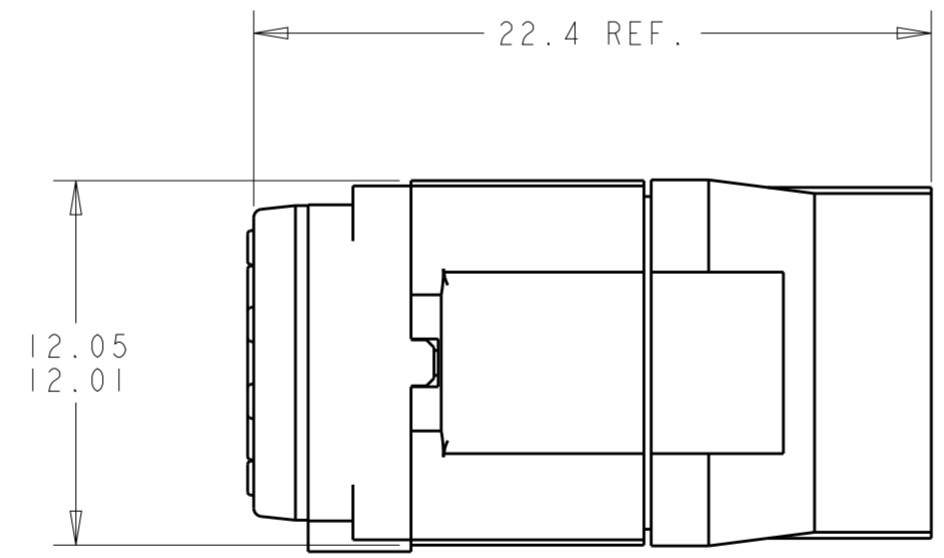
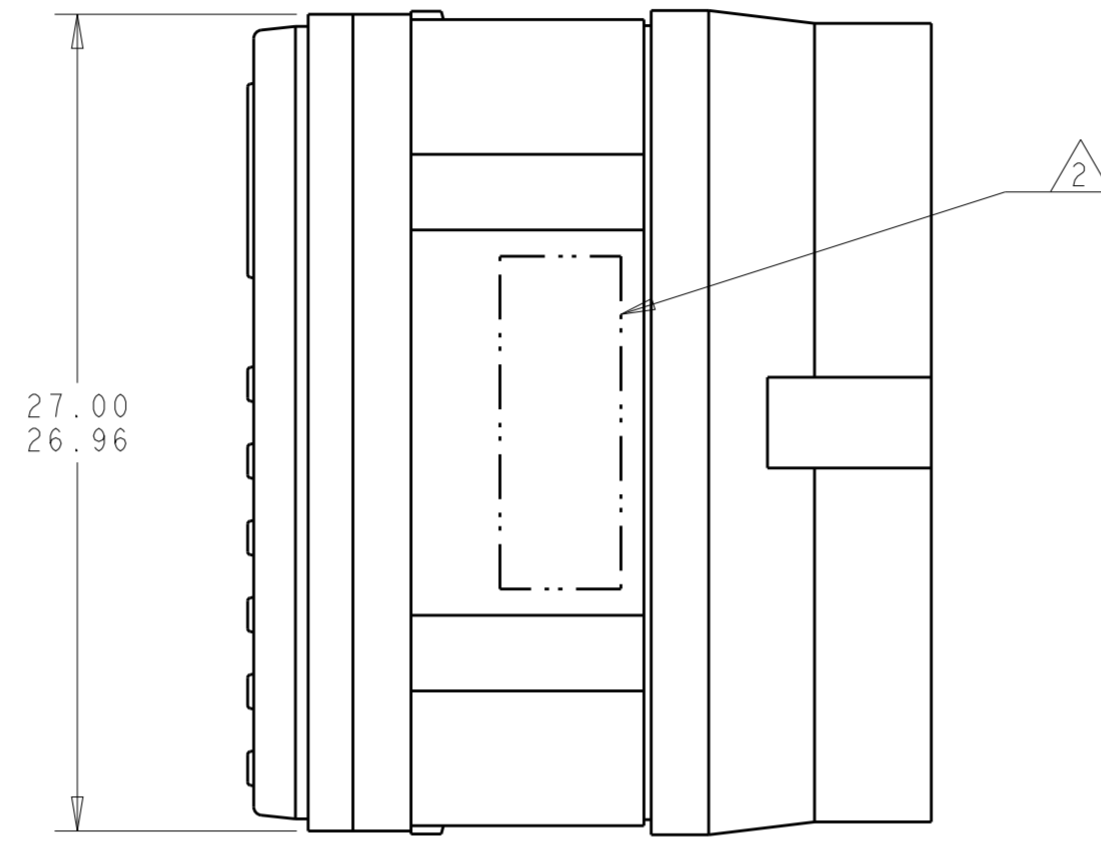


THIS DRAWING IS UNPUBLISHED. RELEASED FOR PUBLICATION
 © COPYRIGHT - BY - ALL RIGHTS RESERVED.

LOC		DIST		REVISIONS			
P	LTR	DESCRIPTION	DATE	DWN	APVD		
-	-	C	REVISED PER ECO-12-018187	26OCT2012	CT	KH	



MATING FACE



- 1 FRONT & REAR INSULATORS: HIGH-TEMP THERMOPLASTIC OR THERMOSET EPOXY PER ASTM D5948.
 CONTACT RETENTION CLIPS: STAINLESS STEEL PER AISI 302 OR COPPER ALLOY PER ASTM B194
 REAR GROMMET & INTERFACIAL SEAL: FLUROSILICONE ELASTOMER PER MIL-R-25988 B EXCEPT 4.6.6.1.
- 2 PART TO BE MARKED WITH TE IDENTIFICATION, TE PART NO.
 AND DATE CODE: YEAR & WEEK (YY WW) IN APPROXIMATE AREA SHOWN.
- 3. THIS INSERT CONTAINS: 24 CAVITIES FOR SIZE 22 PIN CONTACTS
 1 CAVITY FOR SIZE 8 QUADRAX PIN CONTACTS.
- 4. THIS PRODUCT IS SOLD BY TYCO ELECTRONICS UNDER A LICENSE FROM RADIALL SA.

THIS PRODUCT HAS NOT COMPLETED VALIDATION TESTING

ENVIRONMENTAL	GPRBE25QIPB	1877567-1
REMARKS	DESCRIPTIVE PART NUMBER	PART NUMBER

THIS DRAWING IS A CONTROLLED DOCUMENT.		DWN	BH	8NOV07	TE Connectivity		
DIMENSIONS:		CHK	JPM	8NOV07			
TOLERANCES UNLESS OTHERWISE SPECIFIED:		APVD	JPM	8NOV07			
mm		PRODUCT SPEC		NAME			
0 PLC ± 1 PLC ± 2 PLC ±0.05 3 PLC ± 4 PLC ± ANGLES ± FINISH		APPLICATION SPEC		INSERT ASSEMBLY, PIN, ENVIRONMENTAL, ARRANGEMENT 25Q1, KEY B, GPRB			
MATERIAL		WEIGHT		SIZE	CAGE CODE	DRAWING NO	RESTRICTED TO
		-		A2	00779	C-1877567	-
CUSTOMER DRAWING				SCALE	4:1	SHEET	1 OF 1
				REV	C		