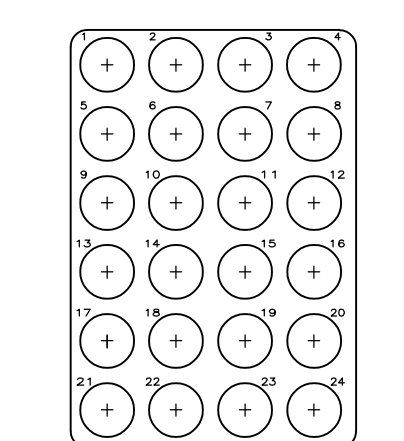
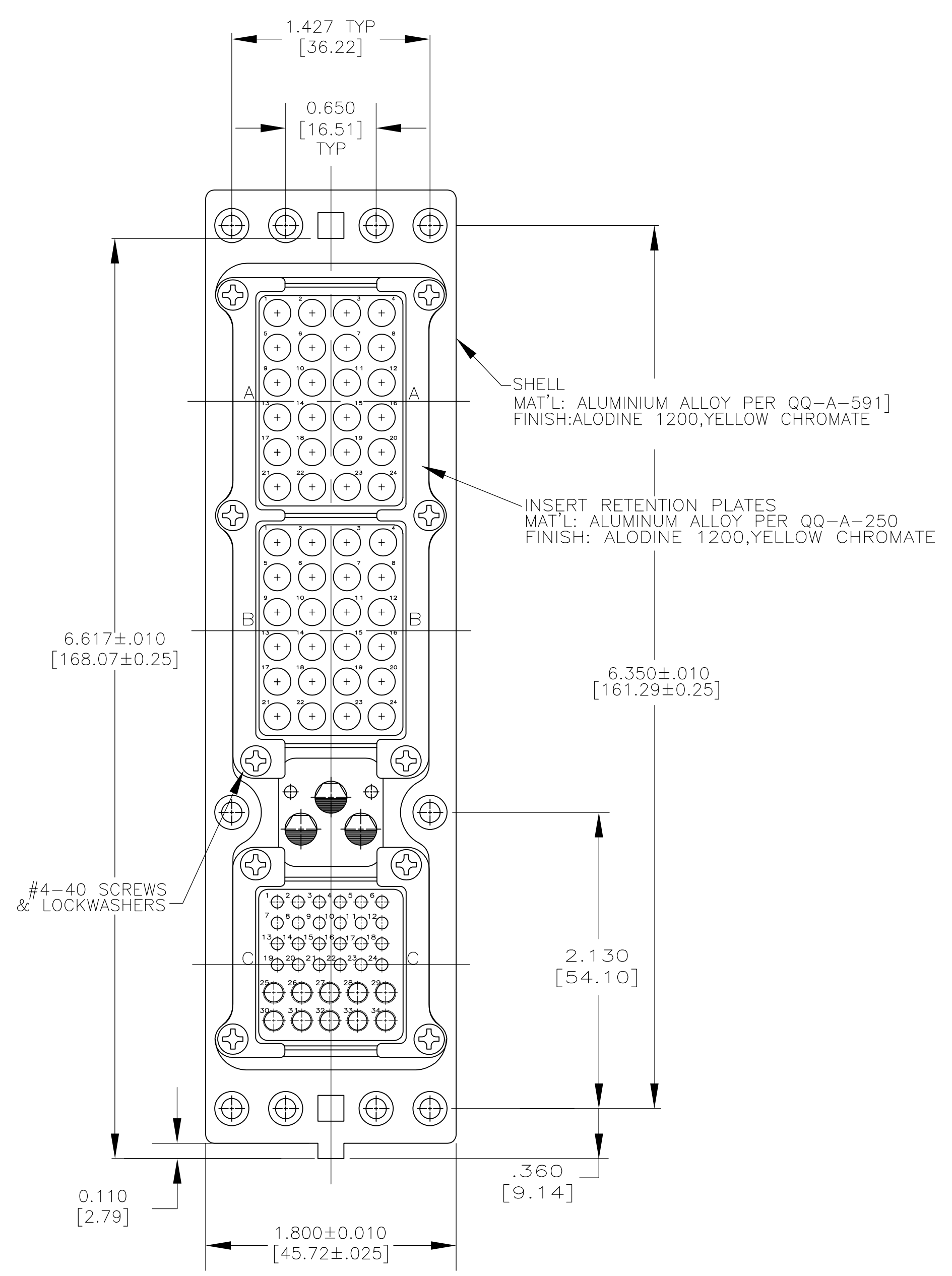
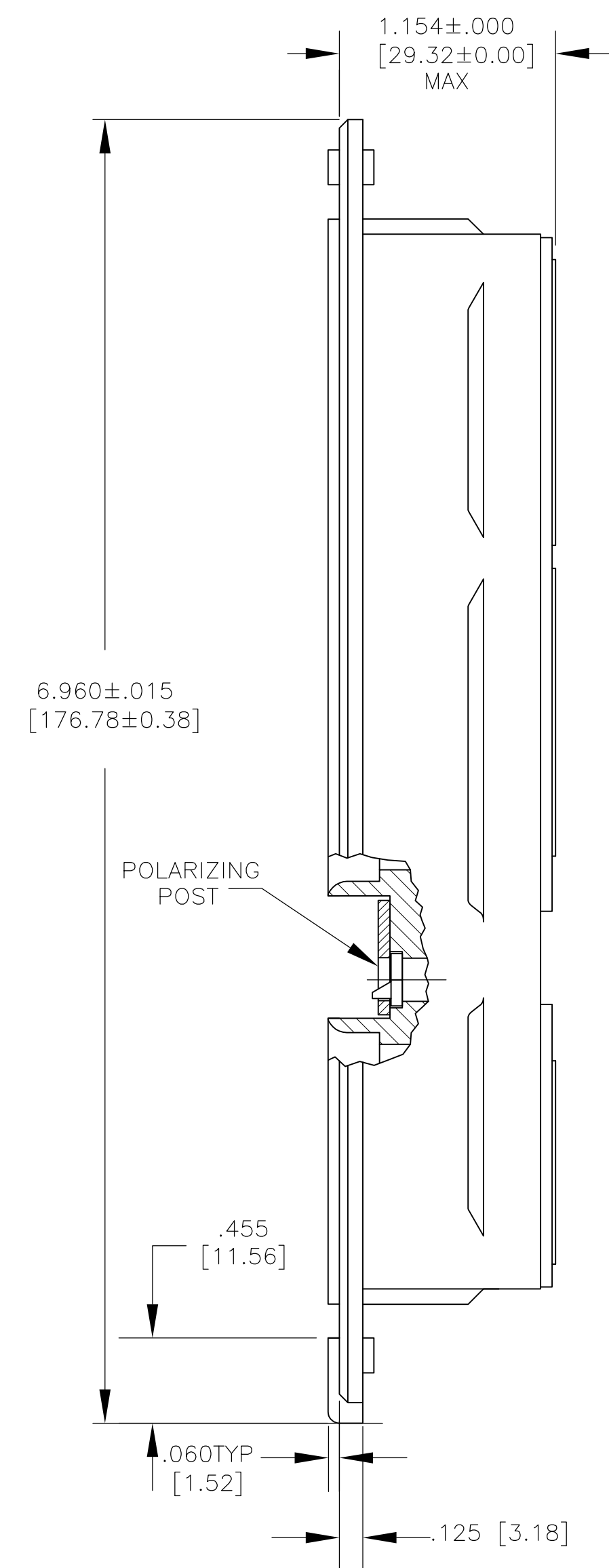
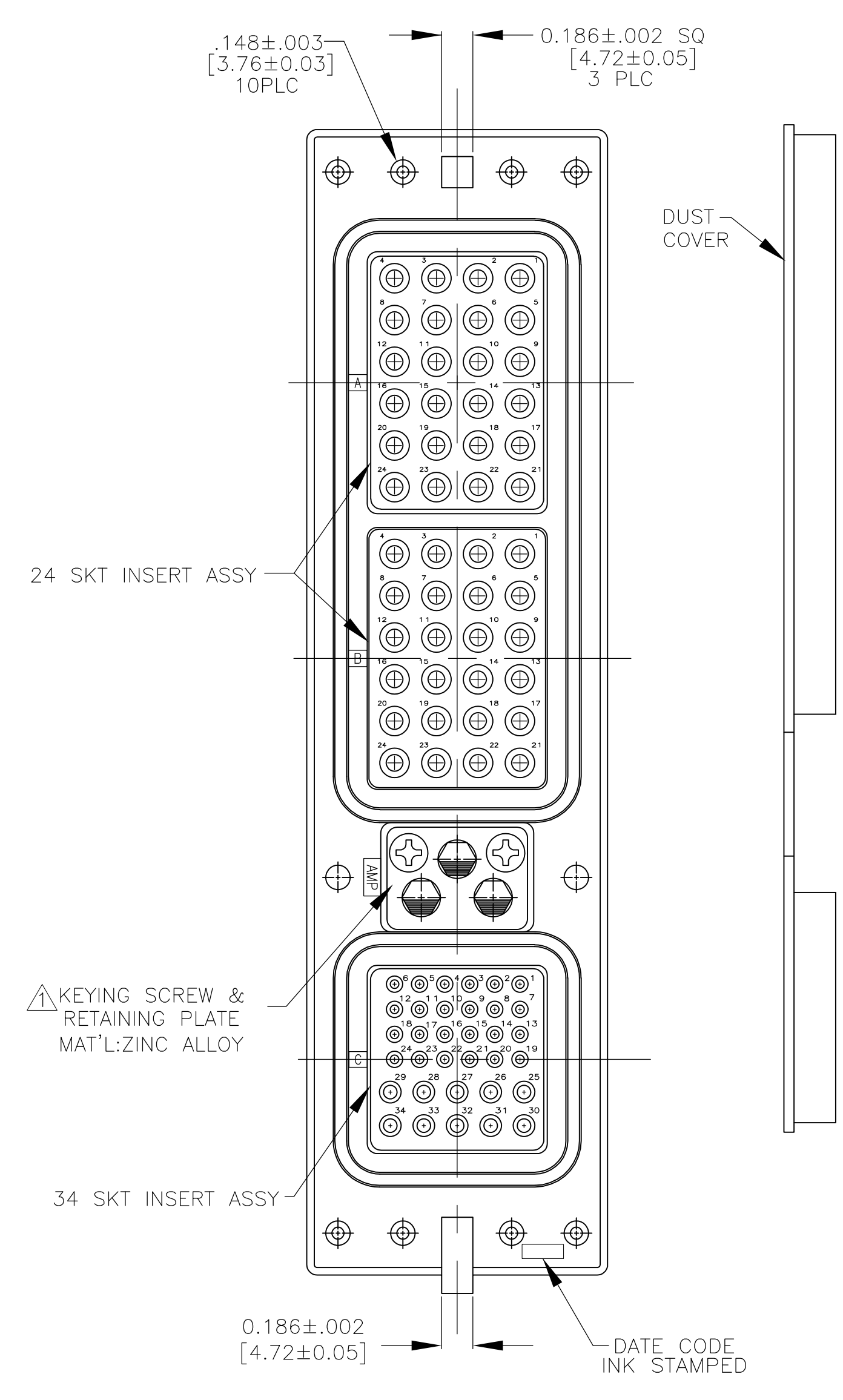
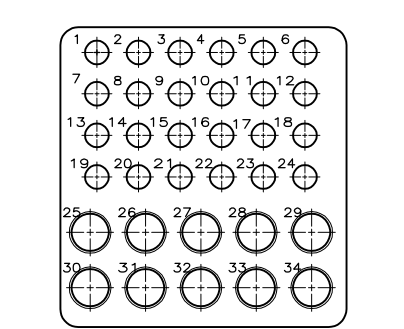


LOC		DIST		REVISIONS			
P	LTR	DESCRIPTION	DATE	DWN	APPD		
A		DRAWING UPDATED	02FEB11	NH	KS		



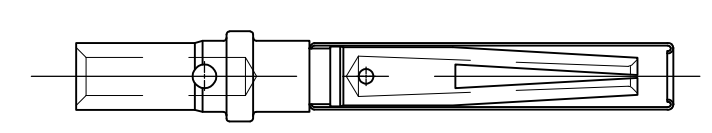
24 SKT INSERT QTY: 2

CONTACT STYLE	QTY
SIZE 12 SKT	48

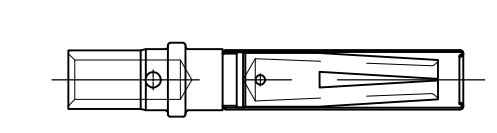


34 SKT INSERT QTY: 1

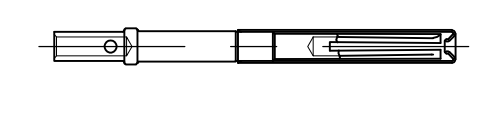
CONTACT STYLE	QTY
SIZE 20 SKT	24
SIZE 16 SKT	10



SIZE 12 SKT



SIZE 16 SKT



SIZE 20 SKT

- NOTES:
- KEYING ASSEMBLED AS PER KEYING CODE 01 IN POSITION SHOWN, AS PER 204014.
  - ALL CONNECTOR DIMENSIONS ARE AS PER ARINC 600 SPECIFICATIONS.

THIS DRAWING IS A CONTROLLED DOCUMENT.

DIMENSIONS: mm [INCHES]	TOLERANCES UNLESS OTHERWISE SPECIFIED: 0 PLC ± - 1 PLC ± - 2 PLC ± - 3 PLC ± .005 [0.13] 4 PLC ± ± - ANGLES ± ± -	DWN PRAVEEN K CHK SHIVAPRAKASH K. R. APVD KARTHIK S	DSMAY06 DSMAY06 DSMAY06	NAME Tycos Electronics Corporation Bangalore, India
MATERIAL SEE CALLOUTS	FINISH SEE CALLOUTS	PRODUCT SPEC -	APPLICATION SPEC -	ARINC 600, SIZE 2, RECP ASSEMBLY
CUSTOMER DRAWING		SIZE A1	CAGE CODE 00779	DRAWING NO 1875134
SCALE NTS		SHEET 1 OF 1		REV A