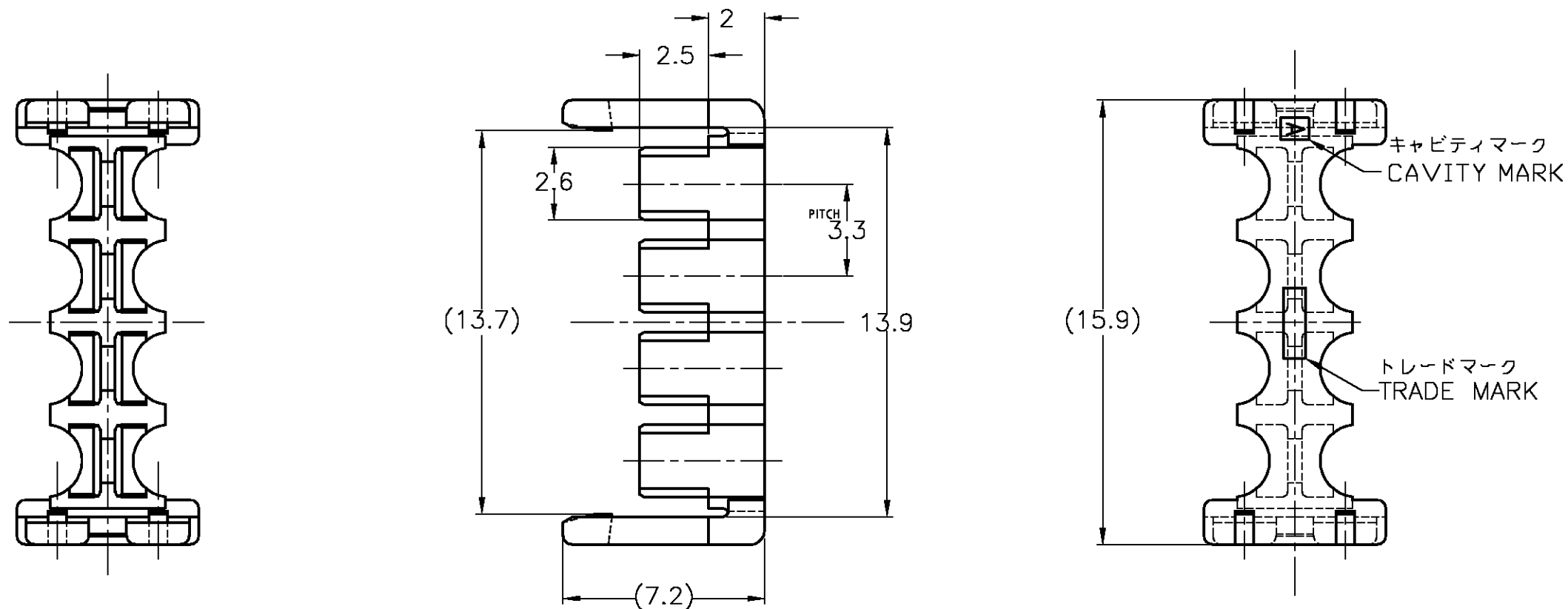


THIS DRAWING IS UNPUBLISHED.

RELEASED FOR PUBLICATION

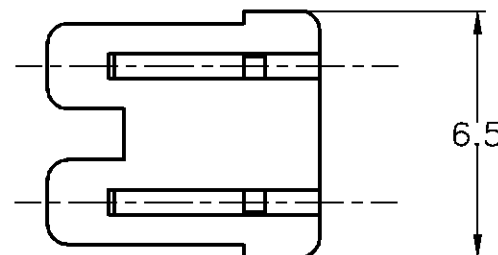
© COPYRIGHT BY TYCO ELECTRONICS CORPORATION. ALL RIGHTS RESERVED.

LOC	DIST	REVISIONS					
		P	LTR	DESCRIPTION	DATE	DWN	APVD
J	—	A		RELEASED ECR-08-022275	04SEP'08	J.S	S.M



TABLE

ダブルロックプレート (DOUBLE LOCK PLATE)	6/6ナイロンガラス強化 (UL94V-0) (6/6 NYLON GRASS FILLED) (UL94V-0)
名称(NAME)	材料(MATERIAL)



注

- 1. 適用製品型番  
プラグハウジング: \* -1827387-\*
- 2. 適用電線範囲  
電線被覆外径: φ 2.0~φ 2.5mm

NOTES

- 1. APPLICABLE P/N  
PLUG HOUSING: \* -1827387-\*
- 2. APPLICABLE WIRE RANGE  
INSULATION DIA: φ 2.0~φ 2.5mm

RED	1-1871558-1
COLOR	PART NUMBER

THIS DRAWING IS A CONTROLLED DOCUMENT.		DWN T.HATANO 21JUL2005	Tyco Electronics AMP K.K. Kawasaki, Japan	
DIMENSIONS: 単位: 概 mm		CHK N.YAMASAKI 21JUL2005	NAME 名称 GRACE INERTIA CONNECTOR 3.3 DOUBLE LOCK PLATE 8POS. (2-ROW, L-TYPE)	
TOLERANCES UNLESS OTHERWISE SPECIFIED: 一般公差		APVD N.YAMASAKI 21JUL2005	DRAWING NO 番号 A3 00779 C-1871558	
0 PLC ± 0.3 1 PLC ± 0.3 2 PLC ± 3 PLC ± 4 PLC ± ANGLES ±		PRODUCT SPEC 製品規格 108-78231	RESTRICTED TO —	
MATERIAL 材料 SEE TABLE		APPLICATION SPEC 取付適用規格	SCALE 尺度 5:1	
FINISH 仕上		WEIGHT	SHEET 1 OF 1	
CUSTOMER DRAWING		REV A		