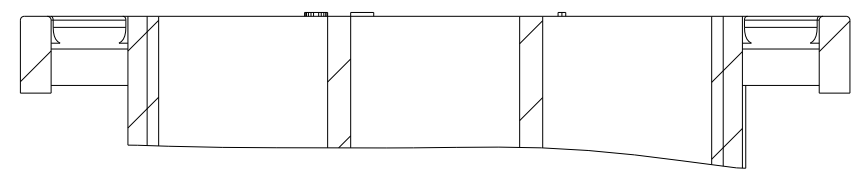
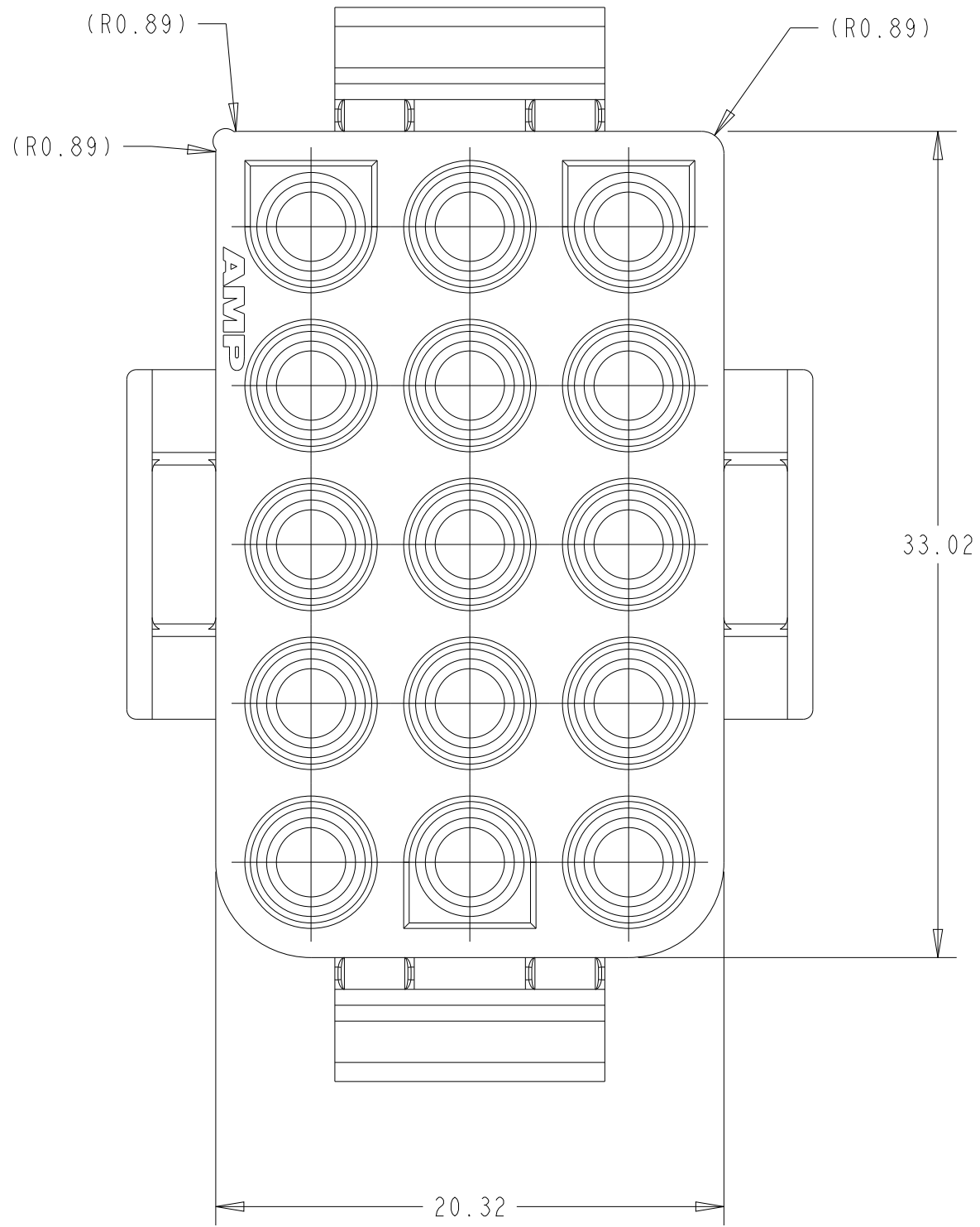
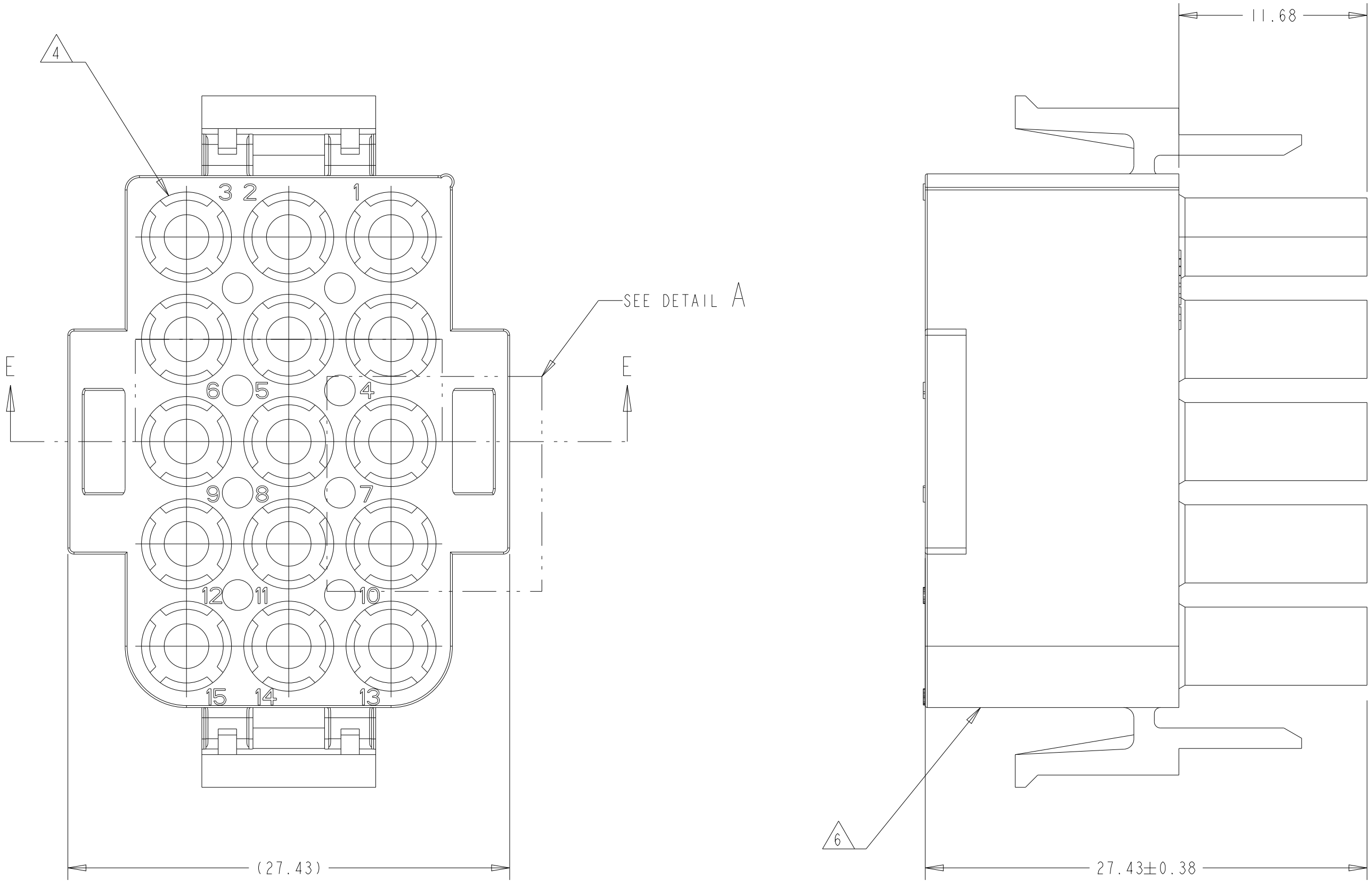
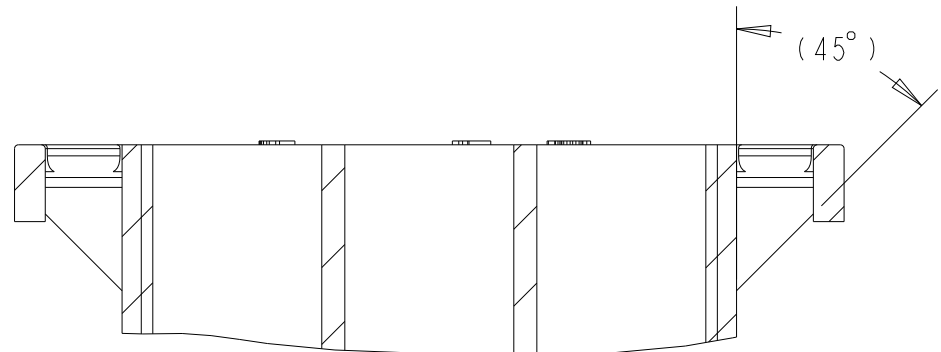


REVISIONS					
P	LTR	DESCRIPTION	DATE	DWN	APVD
A	1	REVISED PER ECR-17-014951	13OCT2017	BDA	KR
B	2	REVISED PER ECR-24-218682	09SEP2024	AK	BR
C	3	REVISED PER ECR-25-243767	27MAY2025	AK	BR

- MATES WITH APPROPRIATE UNIVERSAL MATE-N-LOK™ CAP OR HEADER.
 - SMALL NICKS ARE PERMITTED ON THE CIRCUIT TOWERS WHICH COULD INCREASE THE INITIAL HOUSING MATING FORCE BY UP TO 4.4 NEWTONS [1.0 LBS]. NO INDIVIDUAL NICKED TOWER SHALL INCREASE THIS FORCE BY OVER 2.2 NEWTONS [.5 LBS].
 - DIMENSIONS SHOWN REPRESENT PRODUCT IN DRY, AS MOLDED, CONDITION. ADDITIONAL 2% GROWTH DUE TO SUBSEQUENT MOISTURE ABSORPTION MAY OCCUR AND SHOULD BE ACCOUNTED FOR.
- △4 FOUR RIBS EQUALLY SPACED, NO SPECIFIC ORIENTATION. NO RIBS OR SIX RIBS EQUALLY SPACED, NO SPECIFIC ORIENTATION, OPTIONAL.
- △5 NOT MANUFACTURED IN U.S.
- △6 UNDERWRITERS RECOGNIZED COMPONENT LOGO AND CSA CERTIFICATION LOGO TO BE LOCATED ONCE ON EACH SIDE OF HOUSING.
- △7 MATERIAL CORRESPONDING TO THE REQUIREMENTS OF IEC 60335 (INCL. GLOW WIRE TEST 750°C WITHOUT FLAME)



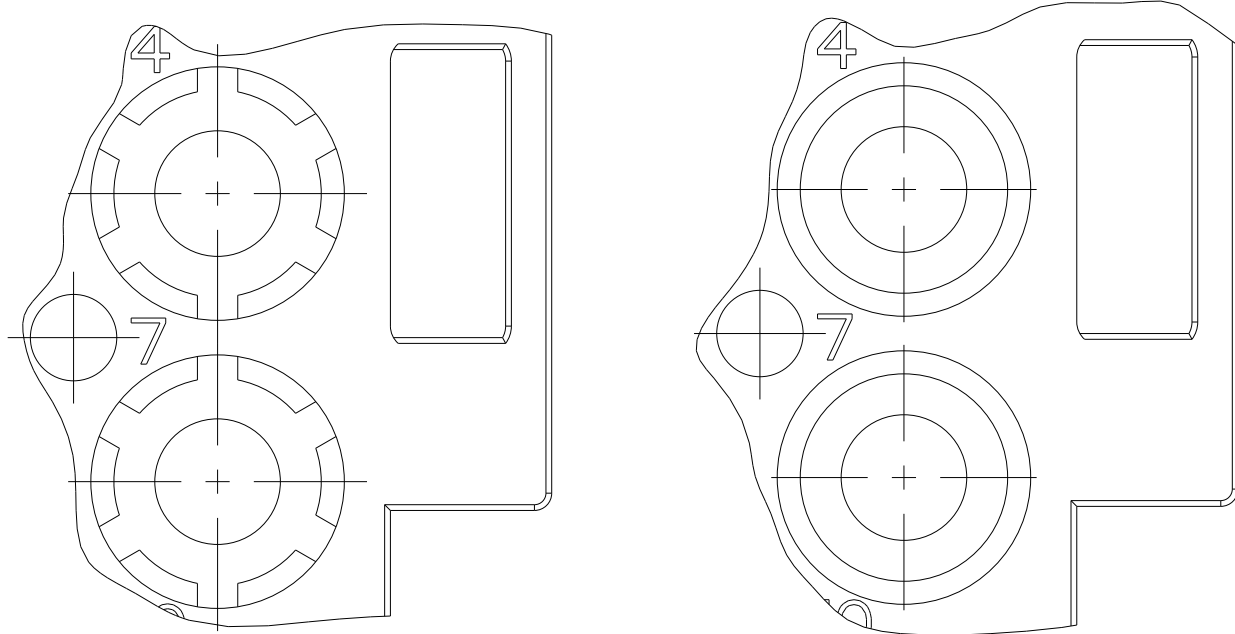
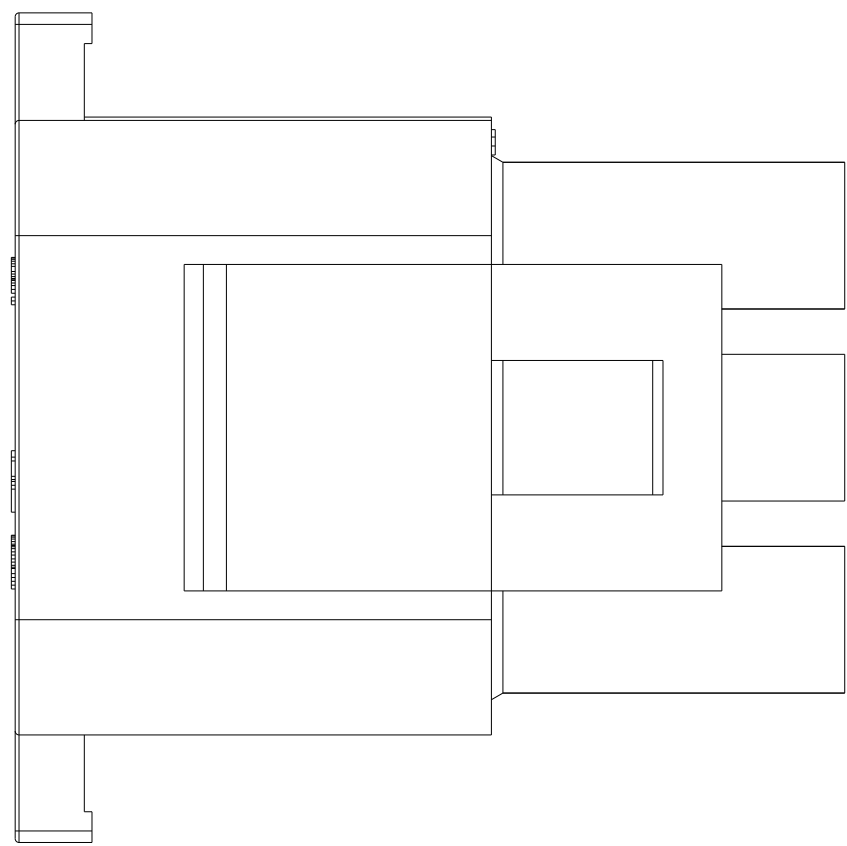
PARTIAL SECTION E-E



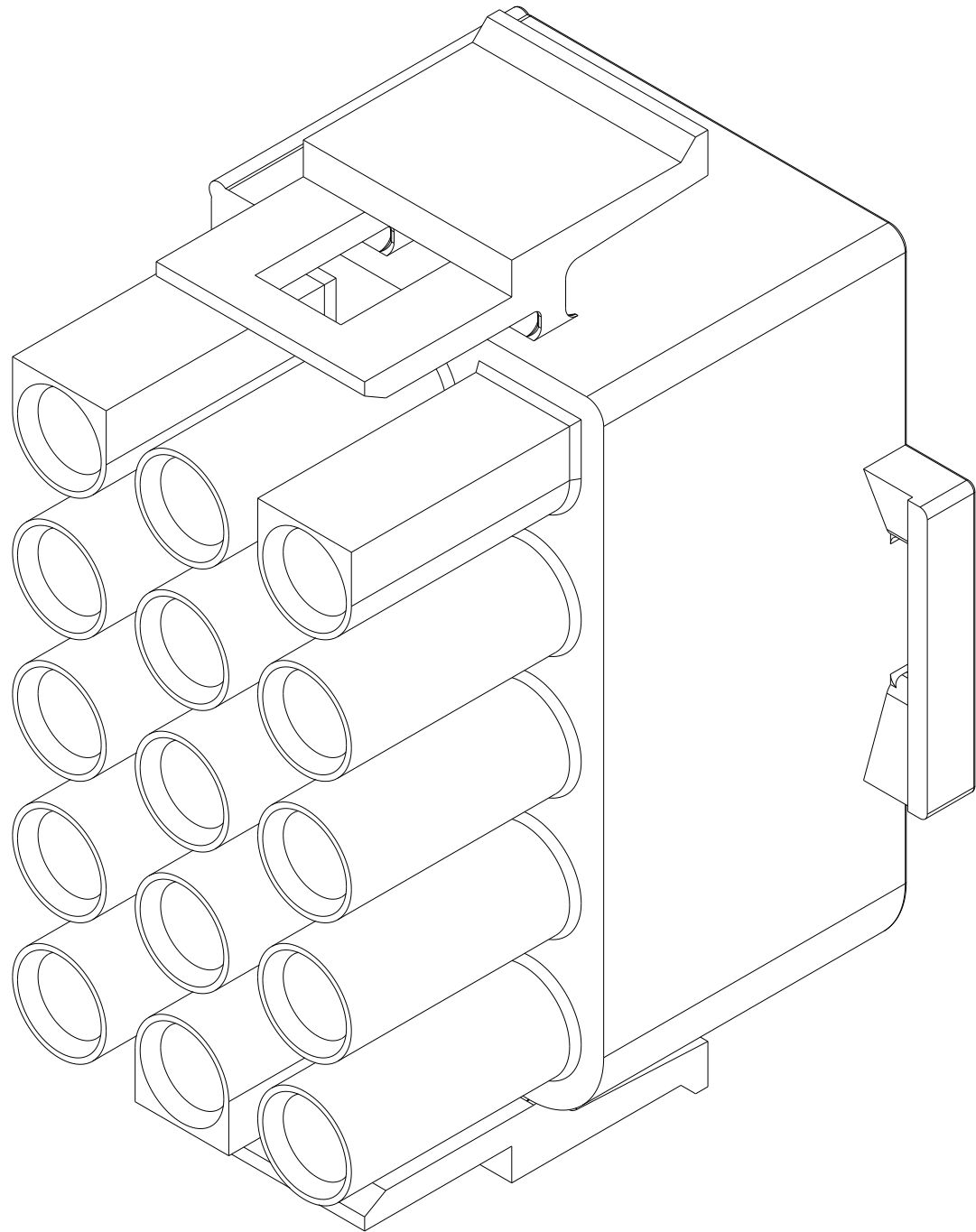
PARTIAL SECTION E-E
OPTIONAL CONSTRUCTION



VIEW B
OPTIONAL CONSTRUCTIONS



DETAIL A
SCALE 6:1
OPTIONAL CONSTRUCTIONS



33.02	1.300
27.43	1.080
20.32	.800
11.68	.460
0.38	.015
0.13	.005
MM	IN
CONVERSION TABLE	

THIS DRAWING IS A CONTROLLED DOCUMENT.		DWN J. SALO 24JAN2008	NATURAL 1863007-1	
DIMENSIONS:		CHK J. LAZARO 24JAN2008	COLOR PART NUMBER	
mm		APVD L. BATILLO 24JAN2008	NAME PLUG, 15 CIRCUIT, UNIVERSAL MATE-N-LOK	
TOLERANCES UNLESS OTHERWISE SPECIFIED:		PRODUCT SPEC	SIZE CAGE CODE DRAWING NO	
0 PLC ±.013		APPLICATION SPEC	RESTRICTED TO	
1 PLC ±.013		WEIGHT	A 00779 C=1863007	
2 PLC ±.013		CUSTOMER DRAWING	SCALE 4:1 SHEET 1 OF 1 REV C	
3 PLC ±.013				
4 PLC ±.013				
ANGLES ±0°30'				
FINISH				
MATERIAL △7 PAG				