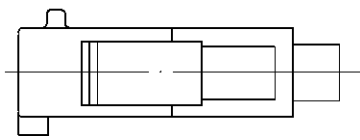
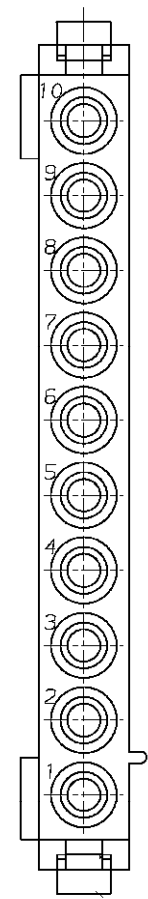
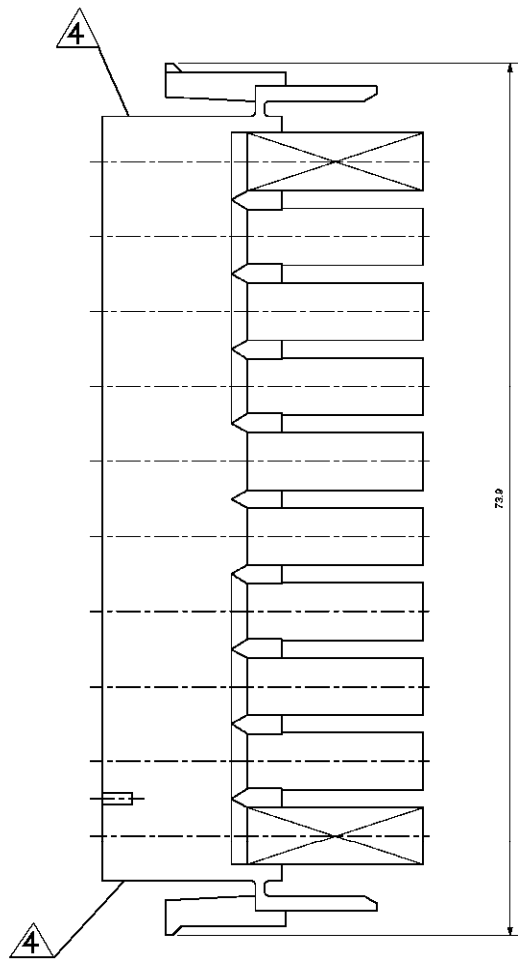
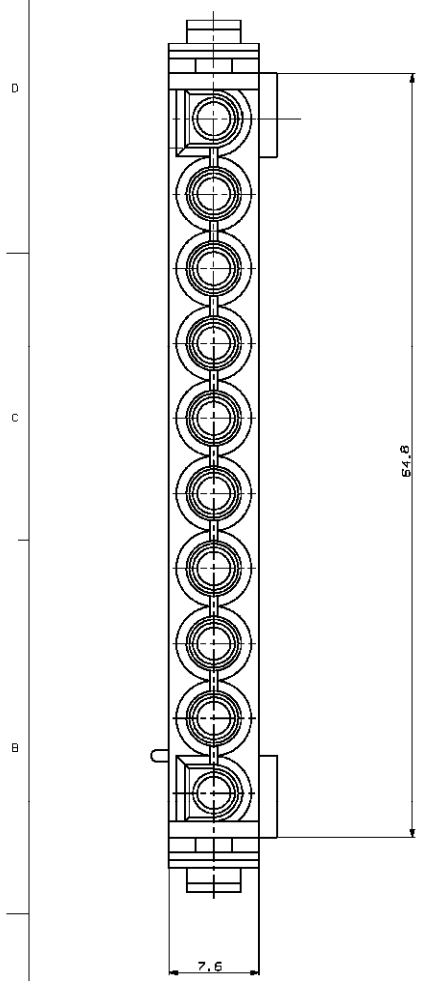


THIS DRAWING IS UNPUBLISHED.
UNLESS OTHERWISE SPECIFIED, ALL DIMENSIONS ARE IN MILLIMETERS.
ALL RIGHTS RESERVED.

REV		DATE		BY		CHKD	
A1							
REV		DATE		BY		CHKD	
A6							

- 1 PHOSPHOR AND HALOGEN FREE A5
- 2 MATERIAL CORRESPONDING TO THE REQUIREMENTS OF IEC 60335-1 INCLUDING GLOW WIRE TEST 750°C WITHOUT FLAME
- 3 PRELIMINARY PART NOT RELEASED FOR PRODUCTION
- 4 CSA LOGO LOCATED ON AT LEAST ONE SIDE OF THE HOUSING APPROXIMATELY AS SHOWN
- 5 DIMENSIONS SHOWN REPRESENT PRODUCT IN DRY, AS MOLDED, CONDITION. ADDITIONAL 2% GROWTH DUE TO SUBSEQUENT MOISTURE ABSORPTION MAY OCCUR AND SHOULD BE ACCOUNTED FOR.



AMP 4026 REV 310405000

THIS DRAWING IS A CONTROLLED DOCUMENT		REV: J. BALLO		REV: J. BALLO	
DESIGNED BY: J. BALLO		CHECKED BY: J. BALLO		APPROVED BY: J. BALLO	
DATE: 10/01/01		DATE: 10/01/01		DATE: 10/01/01	
PART NUMBER: 1-1863004-1		PART NUMBER: 1-1863004-1		PART NUMBER: 1-1863004-1	
MATERIAL: 1-1863004-1		MATERIAL: 1-1863004-1		MATERIAL: 1-1863004-1	
COLOR: NATURAL		COLOR: NATURAL		COLOR: NATURAL	
FINISH: 1-1863004-1		FINISH: 1-1863004-1		FINISH: 1-1863004-1	
SCALE: 1:1		SCALE: 1:1		SCALE: 1:1	
SHEET: 1 OF 1		SHEET: 1 OF 1		SHEET: 1 OF 1	
REV: A6		REV: A6		REV: A6	

UNIVERSAL MIN 10 WAY HOUSING

00779 1863004

CUSTOMER DRAWING