

4

3

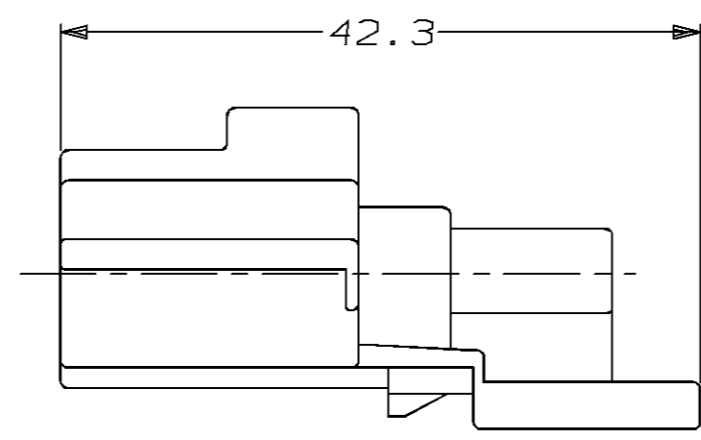
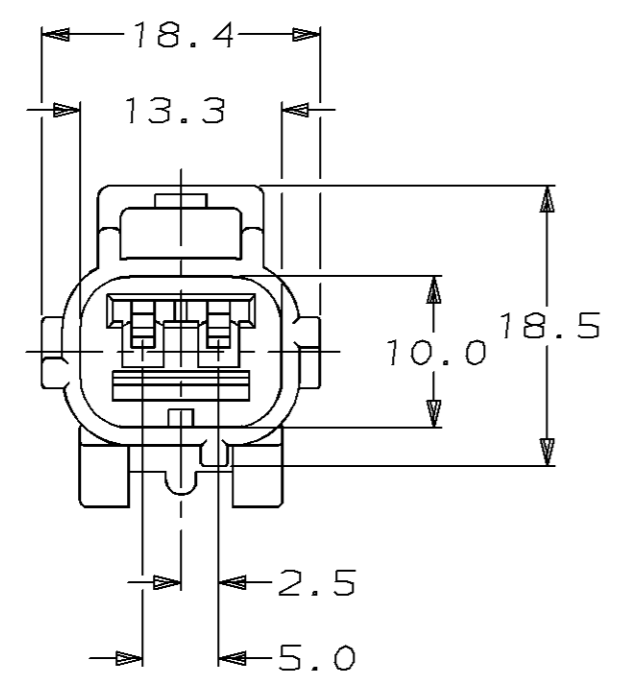
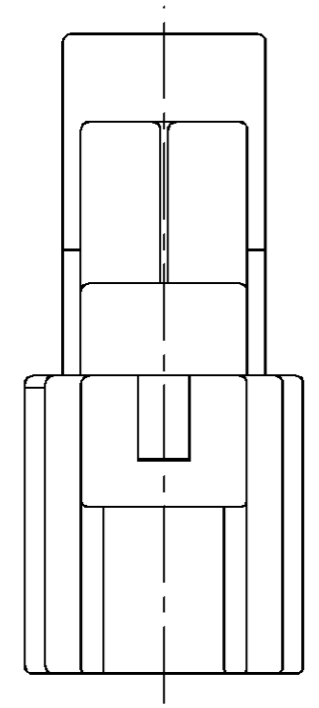
2

1

THIS DRAWING IS UNPUBLISHED. RELEASED FOR PUBLICATION ,19 .

© COPYRIGHT 19 BY AMP INCORPORATED. ALL RIGHTS RESERVED.

LOC	DIST	REVISIONS					
		P	LTR	DESCRIPTION	DATE	DWN	APVD
G	16		0	INITIAL RELEASE	02/14/96	KW	JK
			A	REV PER ECN #OKSO-0014-96	09/20/96	KW	JK



184171-1

PART NUMBER

<small>THIS DRAWING IS A CONTROLLED DOCUMENT FOR AMP INCORPORATED. IT IS SUBJECT TO CHANGE AND THE CONTROLLING ENGINEERING ORGANIZATION SHOULD BE CONTACTED FOR THE LATEST REVISION.</small>		DWN	K. WISE	02/14/96	<p>AMP Incorporated Harrisburg, PA 17105-3608</p>		
DIMENSIONS:		CHK	J. KUNKLE	03/08/96			
mm		APVD	J. KUNKLE	03/08/96			
		PRODUCT SPEC	-				
<small>TOLERANCES UNLESS OTHERWISE SPECIFIED:</small> 0 PLC ±- 1 PLC ±0.3 2 PLC ±- 3 PLC ±- 4 PLC ±- ANGLES ±- FINISH BLACK		APPLICATION SPEC	-		NAME	CAP HSG, SSC, 2 POSN J KEY	
MATERIAL		WEIGHT	-		SIZE	CAGE CODE	DRAWING NO
PBT, 15% GLASS FILLED		CUSTOMER DRAWING		A3	00779	C-184171	
		SCALE	2:1		SHEET	1 OF 1	
				REV	A		