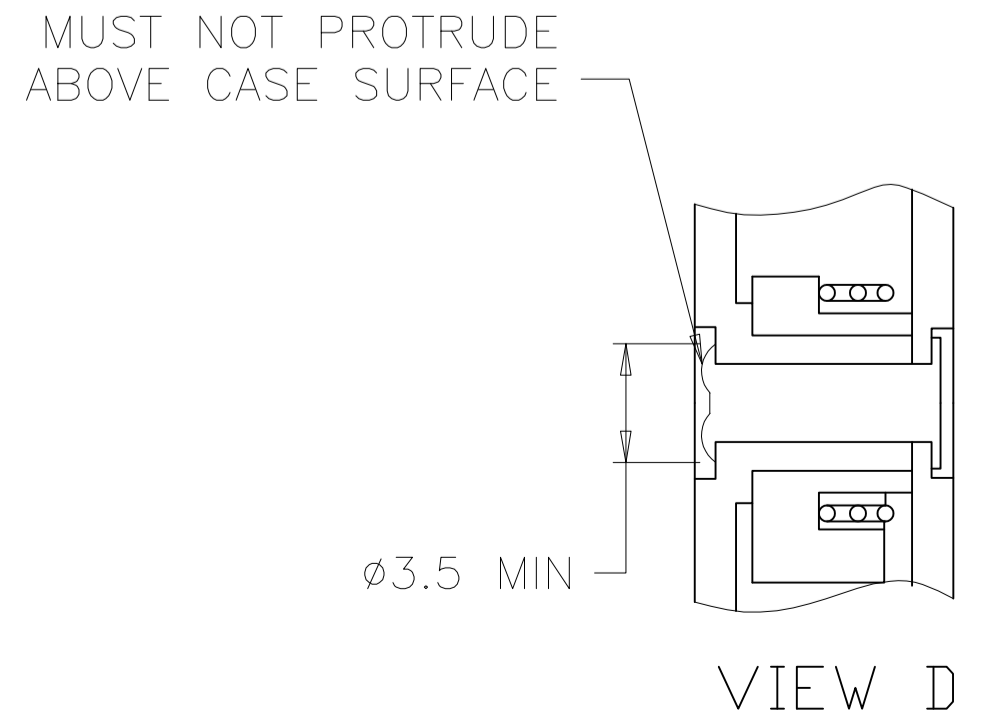
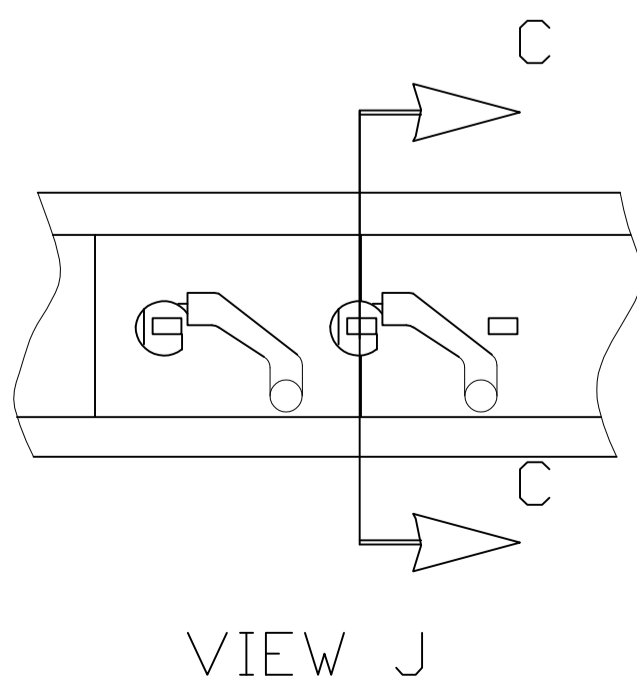
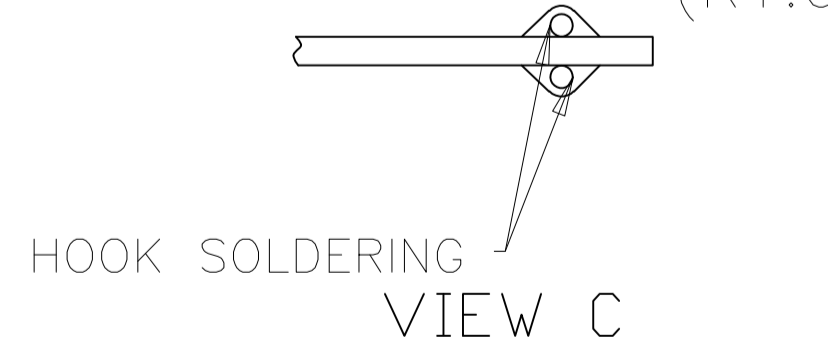
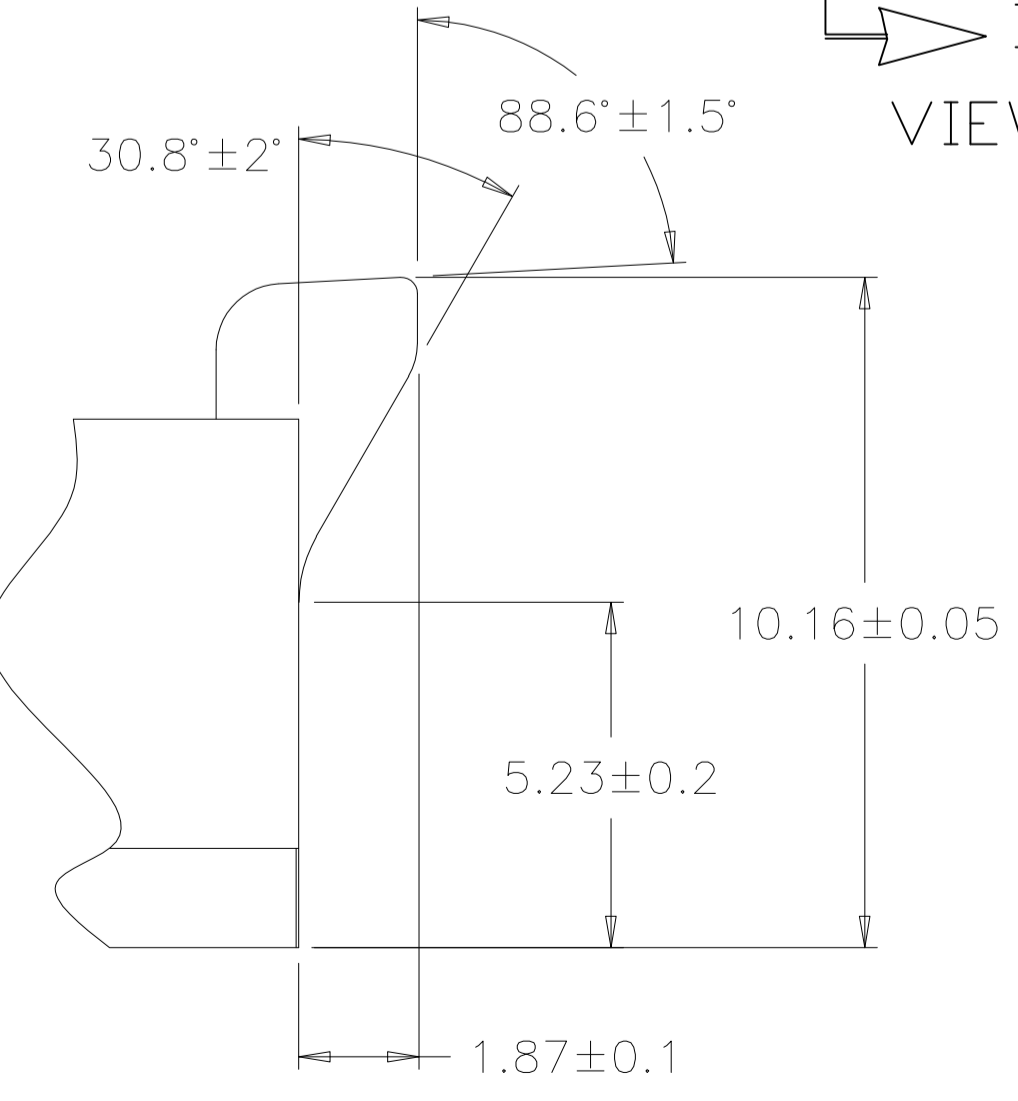
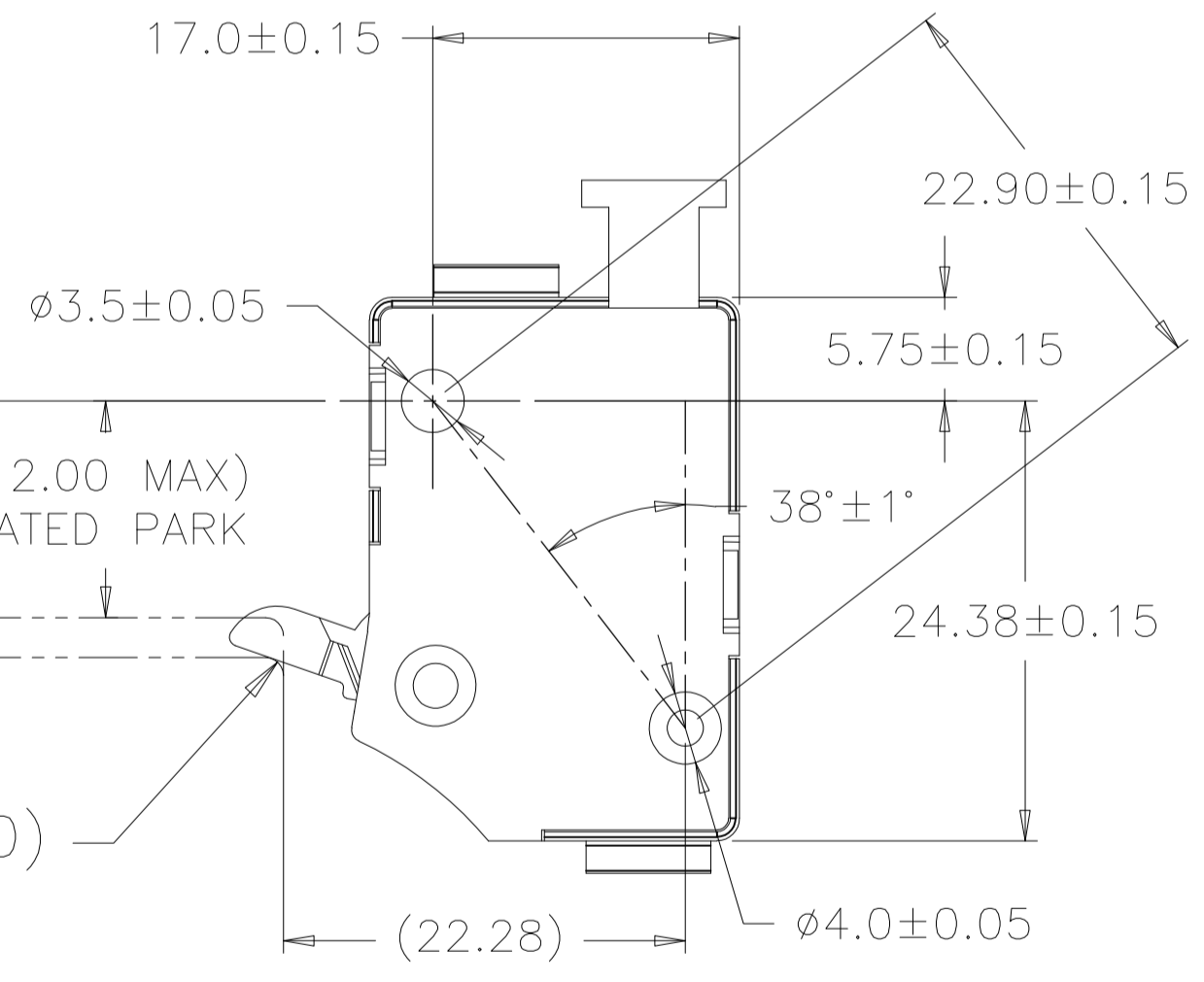
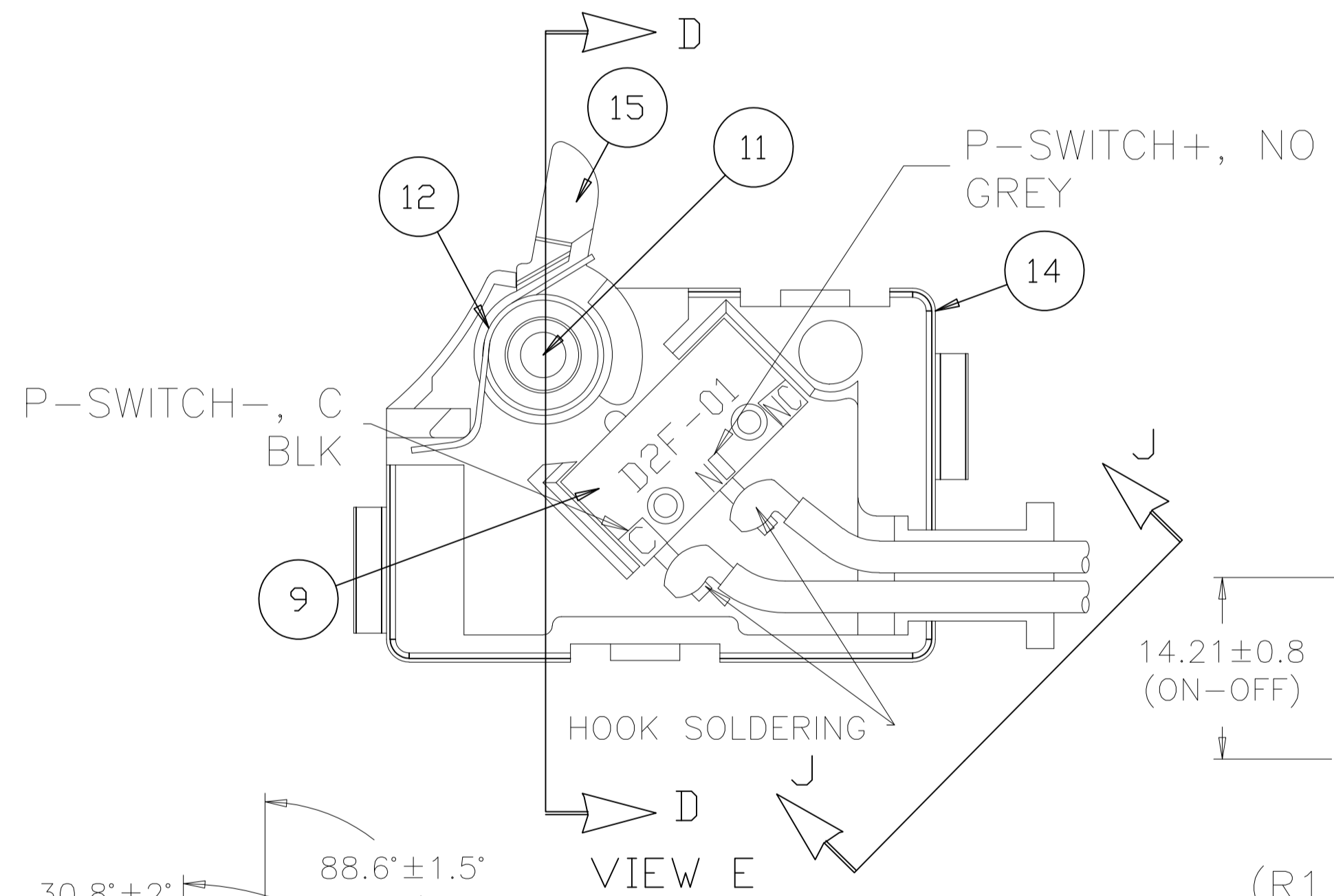


- SWITCH RATING: DC 12V 2A ACTUAL LOAD: DC 12V 10mA MAX.
- VOLTAGE DROP: 0.1V OR LESS AT ACTUAL LOAD (INCLUDING WIRING).
- INSULATION RESISTANCE: MIN. 3M OHMS AT:
 - 500 VOLTS DC
 - 500 VOLTS AC, 10mA 60±5HZ
- OPERATING LOAD: 150+50/-30 gf.
- MUST MEET CHRYSLER PF-5427 (BULB RETENTION DEVICES).
- ELEC/MECH CONNECTION IS TO BE SECURE AT SOLDERING JOINT.
- BAND TO PREVENT STRESS TO THE SOLDERING CONNECTIONS WHEN PULLED IN DIRECTIONS "D" AT 5 KgF FORCE.
- CAM MUST ROTATE FREELY AFTER RIVETING COVER AND CASE TOGETHER. RIVET MUST NOT BE CRACKED
- HARNESS TO BE 100% ELECTRICALLY VERIFIED AFTER ASSEMBLY.
- TAPE TO BE WRAPPED 2 TO 3 TIMES.
- MUST MEET IPC/WHMA-A-620 DATED JANUARY 2002 (REQUIREMENT, AND ACCEPTANCE FOR CABLE AND WIRE HARNESS ASSEMBLIES).
 - SECTIONS:
 - 4 - SOLDER TERMINATION
 - 5 - CRIMPING TERMINATION
 - 8 - SPLICING
- ELECTRICITY TO FLOW THROUGH SWITCH WHEN SWITCH PLUNGER IS DEPRESSED.
- MUST MEET CHRYSLER MS-7889 <D> (CABLE-PRIMARY PVC INSULATED DATED 3-18-93 REV C).
 - SECTIONS:
 - 3.0 - TEMPERATURE, TIME AND SUPPLY VOLTAGE TOLERANCES
 - 6.1.1 - HIGH/LOW TEMP TESTING
 - 6.1.2 - THERMAL SHOCK TESTING
 - 6.2 - HUMIDITY SOAK TEST
 - 6.3 - MECHANICAL VIBRATION TEST
 - 6.6 - MECHANICAL SHOCK
 - 8.1.0 - DURABILITY (80,000 CYCLES AT AMBIENT; 10,000 AT 80°C; 10,000 AT -20°C)



QTY REQ'D	QTY REQ'D	U/M	REMARKS	DESCRIPTION	ITEM NO.
1	-	EA	T5CC/54648A/ST	BULB COVER	17
1	1	EA	JKL E14140	LAMP, STANLEY	16
1	1	EA	1832482-1	CAM, GREY	15
1	1	EA	1832265-1	CASE	14
1	1	EA	1832266-1	COVER	13
1	1	EA	4-1487403-6	SPRING	12
1	1	EA	1569159-4	RIVET	11
2	2	EA	EQ011-00069B-ST	TERMINAL, STANLEY	10
1	1	EA	EQ012-00088B-ST	SOCKET, STANLEY	
1	1	EA	D2F-01 (OMRON)	SWITCH- WITH GOLD CONTACTS	9
1	1	EA	TYCO B-17 (OR EQUIV)	PVC TAPE, 19mm, YELLOW	8
1	1	EA	TWP	WIRE, 22AWG GREY	7
2	2	EA	TWP	WIRE, 22AWG RED/WHT	6
2	2	EA	TWP	WIRE, 22AWG RED	5
1	1	EA	2-1487403-6	CABLE TIE, BLACK	4
1	1	EA	TWP	WIRE, 22AWG BLK	3
4	4	EA	928999-1	TERMINAL	2
1	1	EA	1-929170-1	CONNECTOR, 4 POS, MICRO QUADLOK	1
DASH NO.		1832623			PART NO.

1832623-2	9206751B
1832623-1	9206751A
TE P/N	GHSP P/N

THIS DRAWING IS A CONTROLLED DOCUMENT. DIN K. PETERSON 23MAR2007

APVD: W. LONG

NAME: GHSP CABLE ASSEMBLY, LX A580 P-SWITCH ASSEMBLY

tyco Electronics Tyco Electronics Corporation Harrisburg, Pa 17105-3608

SIZE: A1 CASE CODE: 00779 DRAWING NO: 1832623

RESTRICTED TO: CUSTOMER DRAWING SCALE: NTS SHEET: 1 OF 1 REV: A2