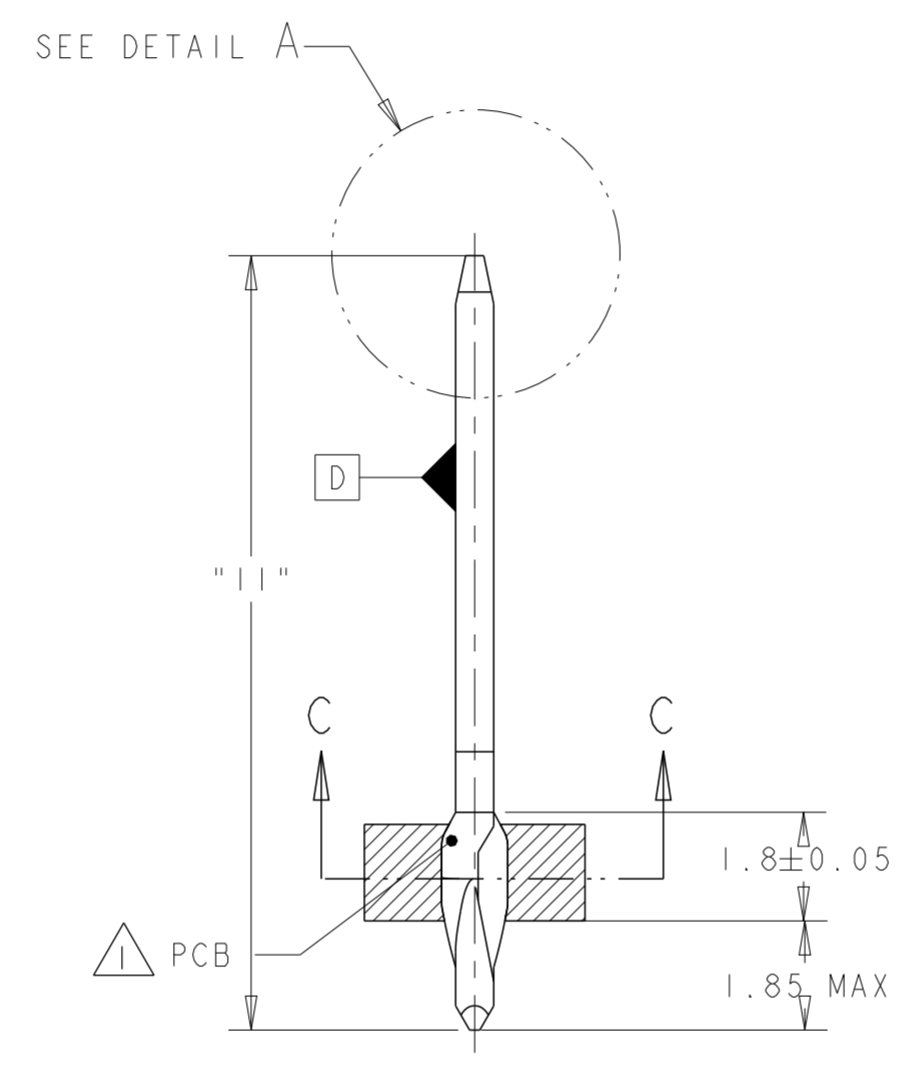
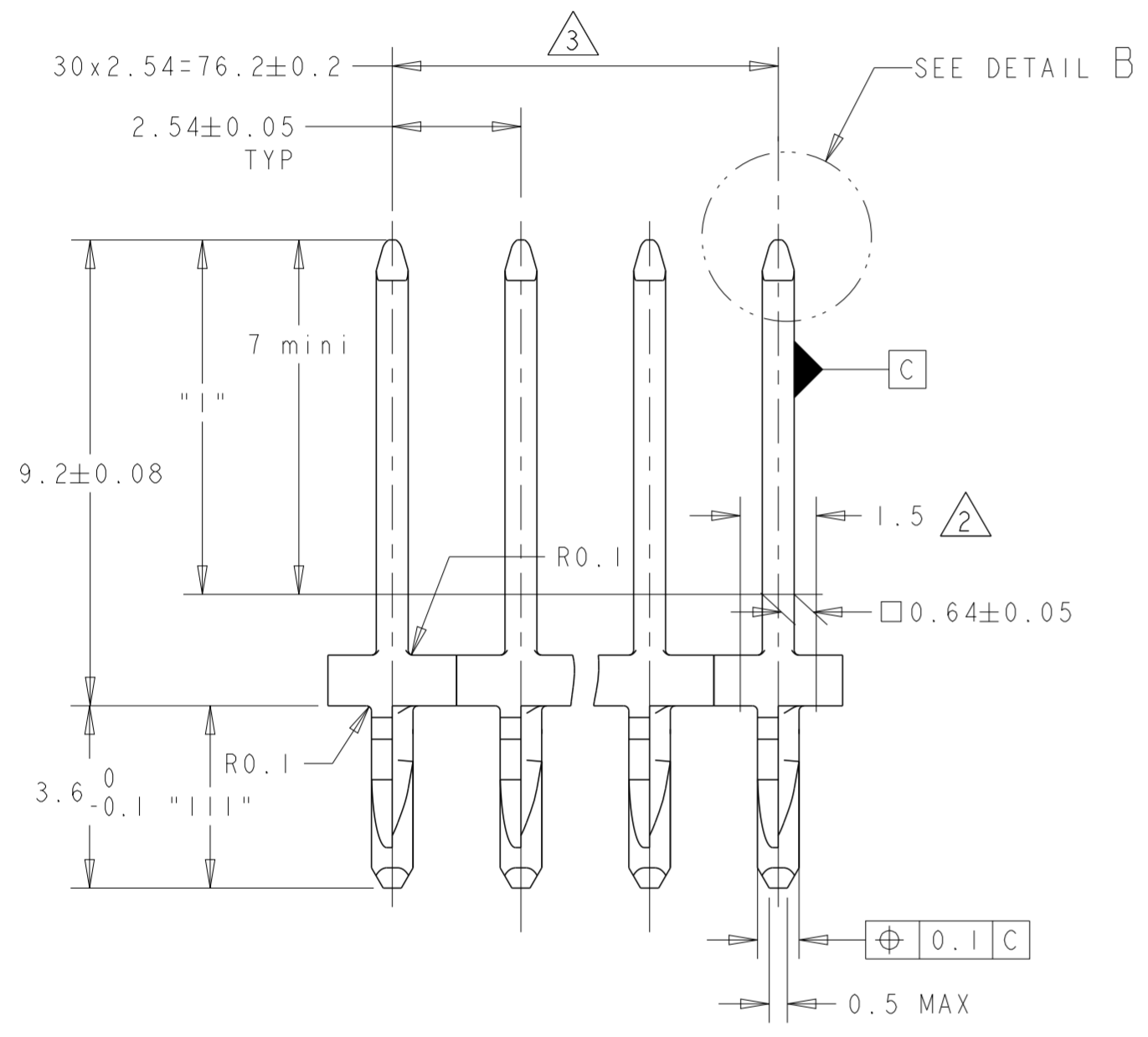
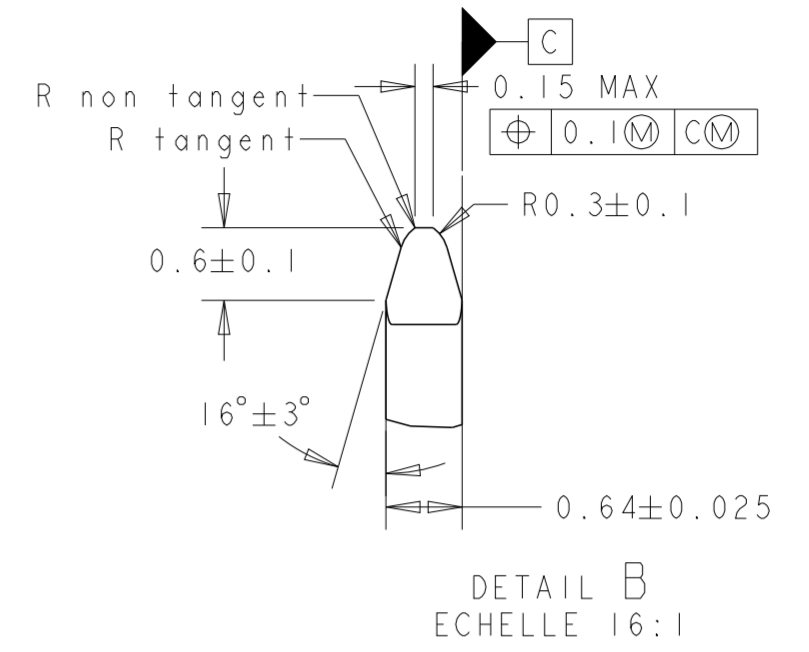
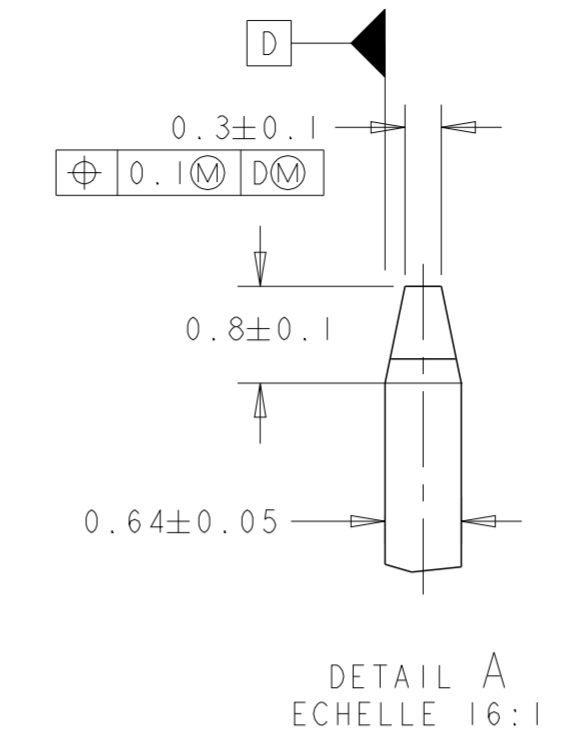
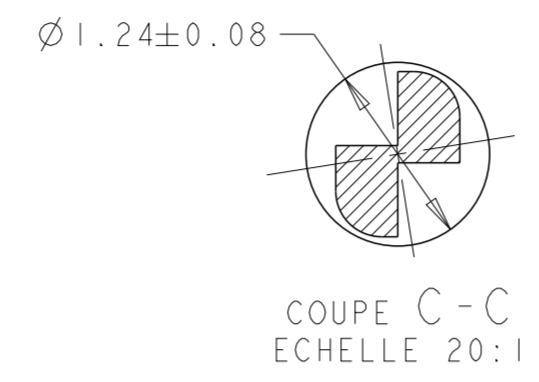
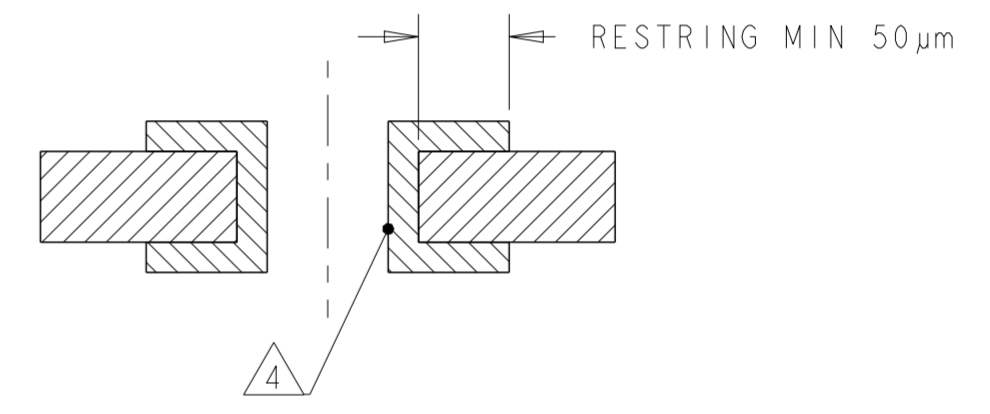


THIS DRAWING IS UNPUBLISHED. RELEASED FOR PUBLICATION 20  
 © COPYRIGHT 20 BY - ALL RIGHTS RESERVED.

REVISIONS				
P	LTR	DESCRIPTION	DATE	APVD
	A	New Drawing	12AUG2014	MN JL



**HOLE CONSTRUCT FOR PCB**



PLATING ACROSS OF HOLE SPEC.	
COPPER COATING	25-75 µm
TIN COATING	4-10 µm
HOLE $\varnothing 1.15 \pm 0.025$	PLATING $\varnothing 0.94_0^{+0.15}$

PLATING ACROSS OF HOLE SPEC.	
COPPER COATING	25-75 µm
NICKEL COATING	MAX 5 µm
GOLD COATING	MAX 0.2 µm
HOLE $\varnothing 1.15 \pm 0.025$	PLATING $\varnothing 0.94_0^{+0.15}$

1801209-1 AS SHOWN

- ① - USED ON PCB THICKNESS: 1.6 ± 0.14mm
- ② - STATUS BEFORE INSERTION
- ③ - PERMITTED SABERSHARPNESS: 40mm/m
- ④ - PRESS-IN AREA FOR 1.6mm PCB REQUIREMENTS ON PCB-HOLE

SURFACE COATING THICKNESS	
AREA "I"	0.8µm UNTIL 3.3µm Sn
AREA "II"	1.3µm UNTIL 2.2 µm Ni
AREA "III"	0.8µm UNTIL 1.8µm Sn

THIS DRAWING IS A CONTROLLED DOCUMENT.		DWN 12AUG2014 MADHUSUDHAN N		CHK 12AUG2014 R CHARLES		APVD 12AUG2014 J LALANGE		NAME	
DIMENSIONS: mm		TOLERANCES UNLESS OTHERWISE SPECIFIED:		PRODUCT SPEC		APPLICATION SPEC		SIZE CAGE CODE DRAWING NO RESTRICTED TO	
MATERIAL CuNiSi		FINISH		WEIGHT		SCALE 8:1		SHEET 1 OF 1 REV A	



CONTACT ACTION PIN  
TH 0.25