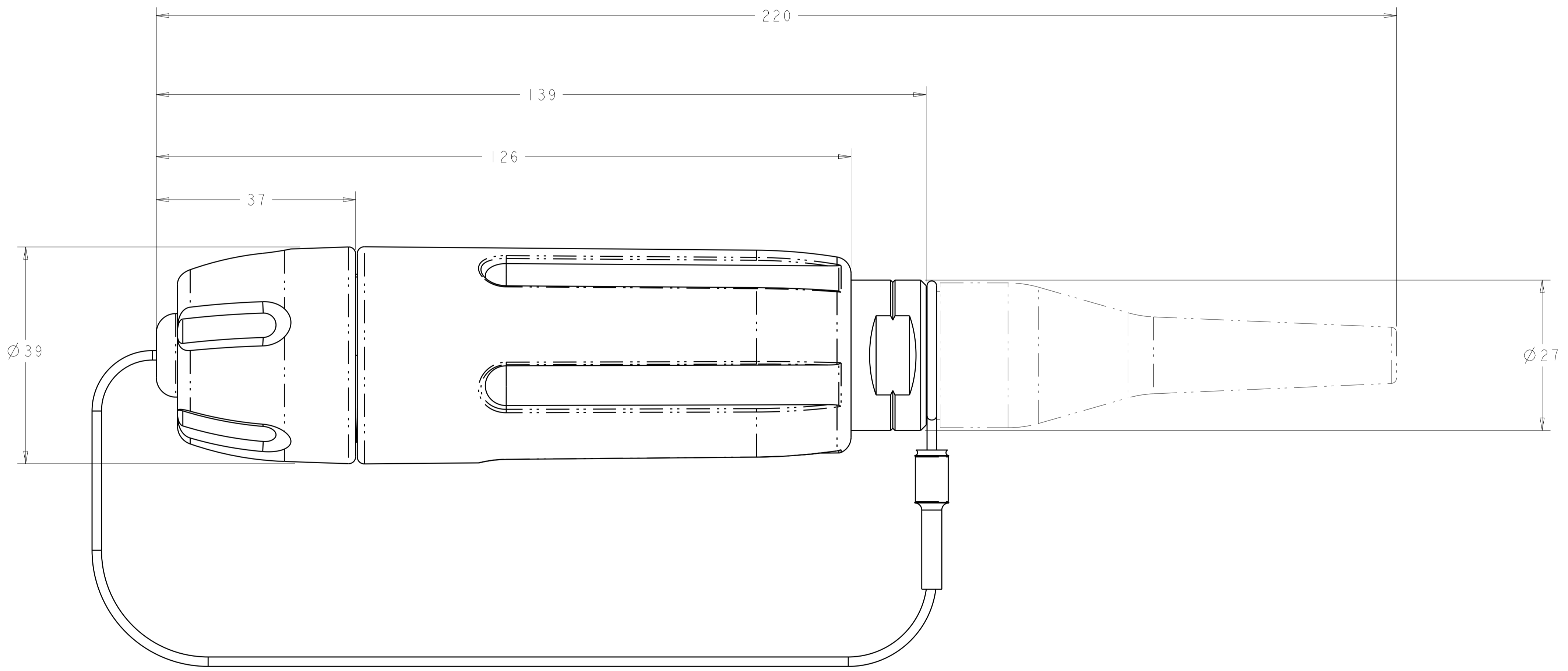


LOC	DIST	REVISIONS					
		P.	LTN	DESCRIPTION	DATE	DWN	APVD
CE	-	B		ECR-06-013320	12JUN06	KG	DW
		B1		ECR-11-022292	03NOV2011	KG	DW
		B2		ECR-13-011633	30JUL2013	KG	DW

1. ASSEMBLY SHOWN FOR REFERENCE ONLY.
SHIPPED LOOSE PIECE AS SHOWN ON PAGE 2.
2. ALL ASSEMBLY DIMENSIONS ARE FOR REFERENCE ONLY.
3. THIS PRODUCT HAS NOT COMPLETED VALIDATION TESTING.
4. COMPLETE THE CONNECTOR ASSEMBLY BY ADDING EACH OF THE FOLLOWING PRO BEAM SR. KITS:
 - A. EXPANDED BEAM INSERT ASSEMBLY KIT
 - B. CABLE ADAPTER KIT, SIZED TO THE CABLE JACKET DIAMETER
 - C. FERRULE KIT, ONE PER FIBER



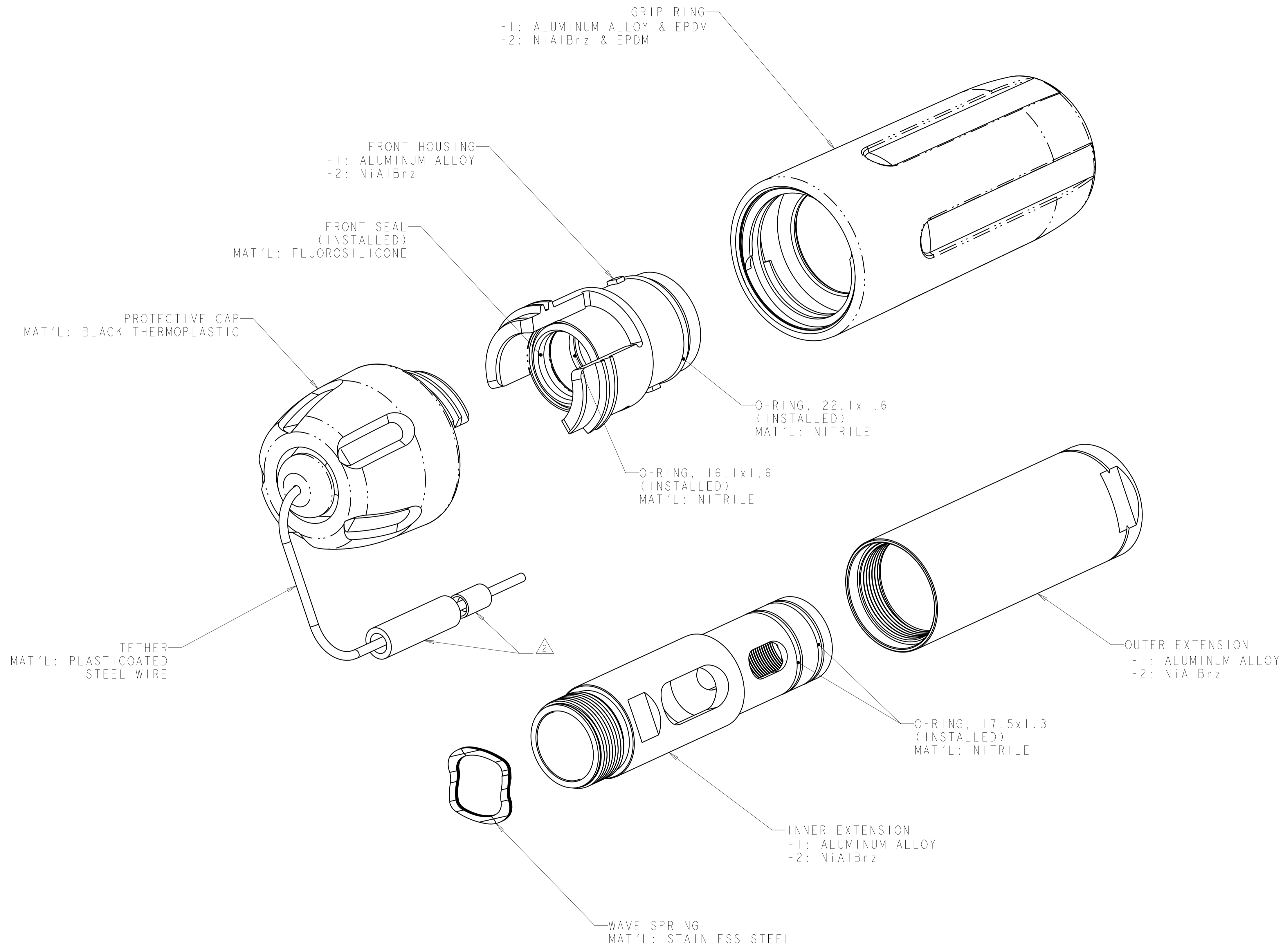
VIEW SHOWN WITH CABLE ADAPTER KIT INSTALLED
 AS PHANTOM LINES FOR VISUAL AND DIMENSIONAL PURPOSES ONLY

NiAlBrz	1754842-2
ALUMINUM	1754842-1
ALLOY OPTION	PART NUMBER

THIS DRAWING IS A CONTROLLED DOCUMENT.		DWN K. GLATFELTER 23JUL2004	TE Connectivity	
DIMENSIONS:		CHK D. WERTMAN 12AUG2004		
TOLERANCES UNLESS OTHERWISE SPECIFIED:		APVD D. WERTMAN 13AUG2004		
mm	0 PLC ±	PRODUCT SPEC	NAME CONNECTOR SHELL KIT, PLUG, PRO BEAM SR.	
	1 PLC ±	APPLICATION SPEC	SIZE A100779C=1754842	
	2 PLC ±	RESTRICTED TO	SCALE 2:1	
	3 PLC ±		SHEET 1 OF 2	
	4 PLC ±		REV B2	
	ANGLES ±			
MATERIAL	FINISH HARD ANODIZE (ALUMINUM ONLY)	WEIGHT	CUSTOMER DRAWING	

LOC		DIST		REVISIONS			
CE	-	P	LTH	DESCRIPTION	DATE	DWN	APVD
		-		SEE SHEET 1			

1. CONNECTOR SHELL KIT SHIPPED LOOSE PIECE AS SHOWN.
 2. TETHER ATTACHING LOOP TO BE COMPLETED ONTO CONNECTOR DURING TERMINATION ASSEMBLY.



THIS DRAWING IS A CONTROLLED DOCUMENT.		DWN A. GLATFELT 23 JUL 2004	TE Connectivity	
DIMENSIONS:		CHK D. WERTMAN 12 AUG 2004	NAME CONNECTOR SHELL KIT, PLUG, PRO BEAM SR.	
TOLERANCES UNLESS OTHERWISE SPECIFIED:		APVD D. WERTMAN 13 AUG 2004	RESTRICTED TO	
mm	0 PLC ± 1 PLC ± 2 PLC ± 3 PLC ± 4 PLC ±	PRODUCT SPEC	SIZE CAGE CODE DRAWING NO	
ANGLES	±	APPLICATION SPEC	A100779C=1754842	
MATERIAL	FINISH HARD ANODIZE (ALUMINUM ONLY)	WEIGHT	SCALE 2:1 SHEET 2 OF 2 REV B2	
		CUSTOMER DRAWING		