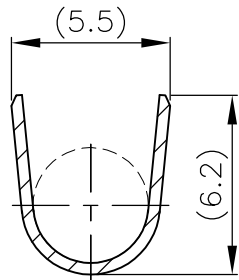
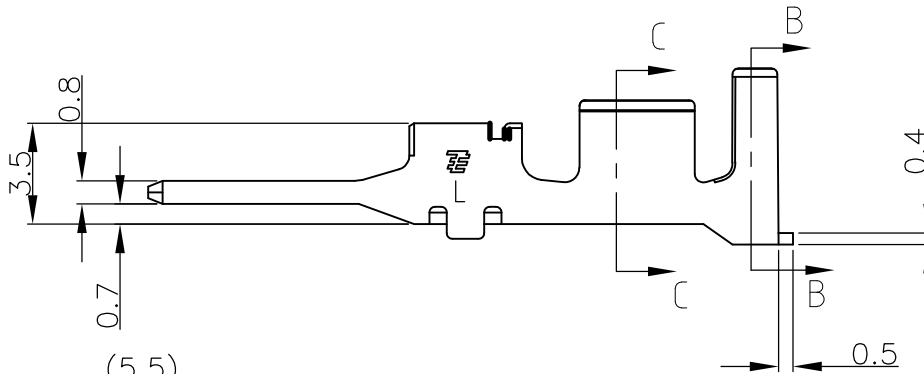
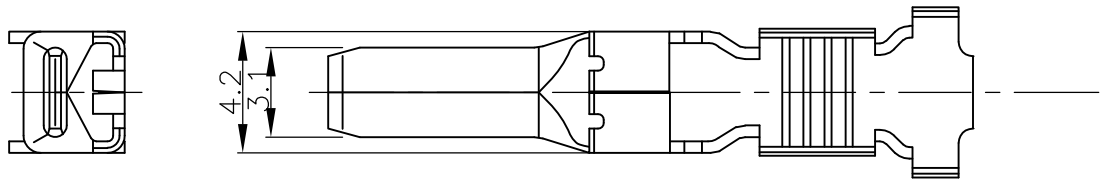
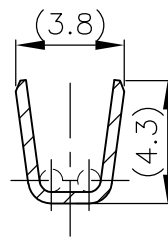


LOC	DIST	REVISIONS					
J	-	P	LTR	DESCRIPTION	DATE	DWN	APVD
		A		REVISED PER ECR-11-002599	08FEB2011	HMR	TM



SECT B-B



SECT C-C

L TYPE

- 注)
- 1.一般公差：±0.25
 - 2.材料：錫めっき済 銅合金
 - 3.適用電線：AWG#14-#12(被覆外径φ2.9~φ4.1)

- NOTES)
- 1.GENERAL TOLERANCE:±0.25
 - 2.MATERIAL:PRE-TIN COPPER ALLOY
 - 3.APPLICABLE WIRE:AWG#14-#12 (INS DIAφ2.9~φ4.1)

1746974-1
PART NUMBER

THIS DRAWING IS UNPUBLISHED.
 RELEASED FOR PUBLICATION
 ALL RIGHTS RESERVED.
 BY TYCO ELECTRONICS CORPORATION.
 COPYRIGHT ©

DIMENSIONS: MM TOLERANCES UNLESS OTHERWISE SPECIFIED: ???? 0 PLC ± - 1 PLC ± - 2 PLC ± - 3 PLC ± - 4 PLC ± - ANGLES ± - 	DWN	A.OISHI	17MAY2004	MATERIAL	-	FINISH	-		
	CHK	N.YAMASAKI	17MAY2004	Tyco Electronics AMP K.K. Kawasaki, Japan	NAME				
	APVD	S.MANABE	17MAY2004		GRACE INERTIA CONNECTOR 6.2MM PITCH TAB CONTACT (L TYPE)				
	PRODUCT SPEC	108-5979			SIZE	A4	CAGE CODE	00779	
APPLICATION SPEC	114-5356			DRAWING NO	C=1746974		RESTRICTED TO	-	
WEIGHT	-			CUSTOMER DRAWING		SCALE	4:1		
						SHEET	1 OF 1	REV	A