

D

C

B

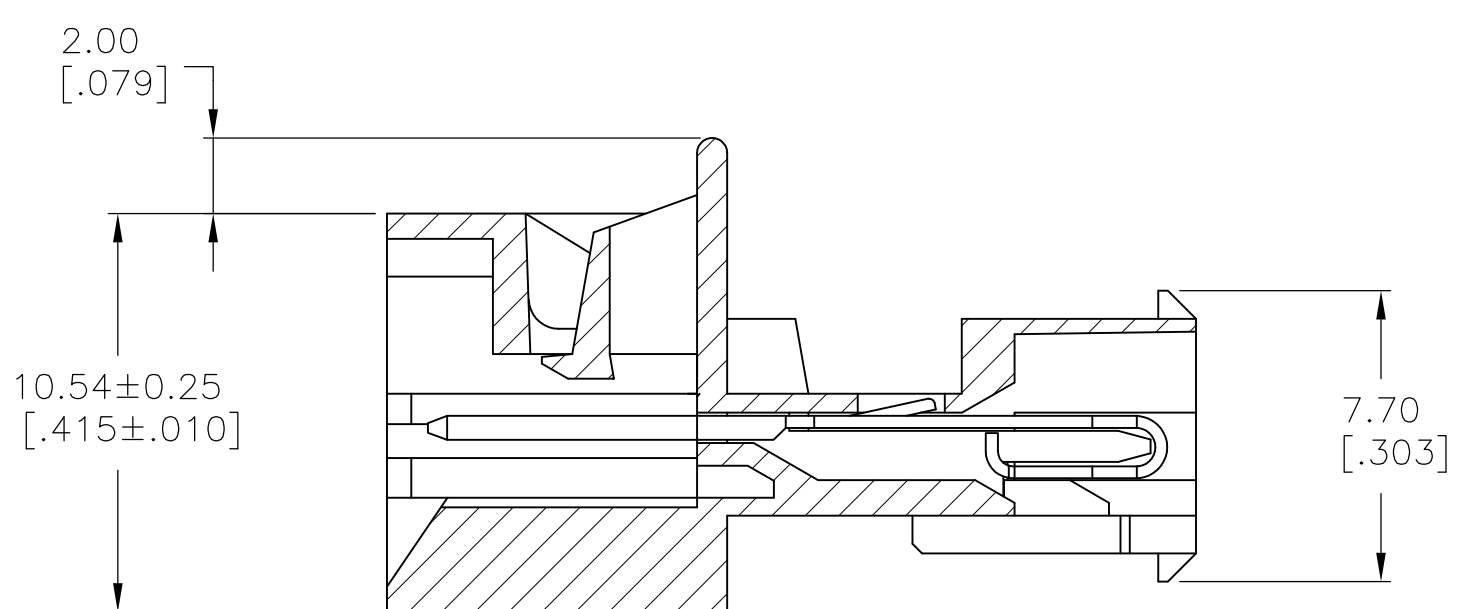
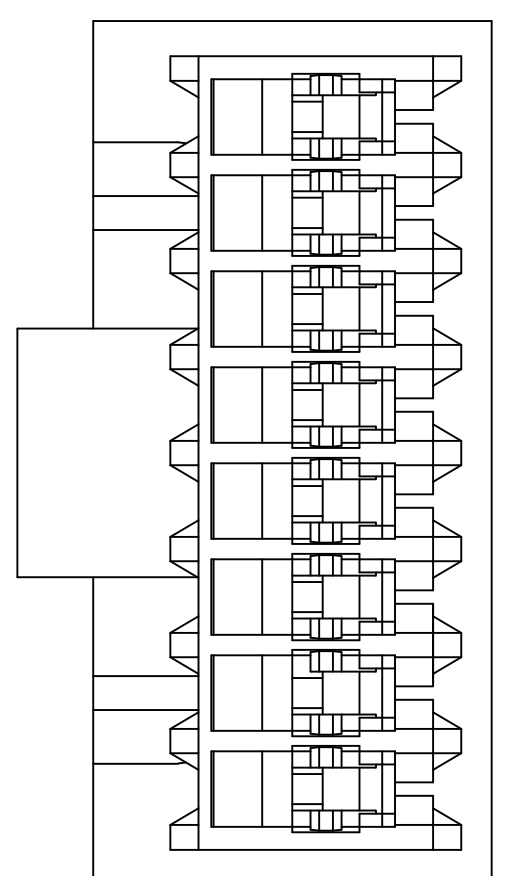
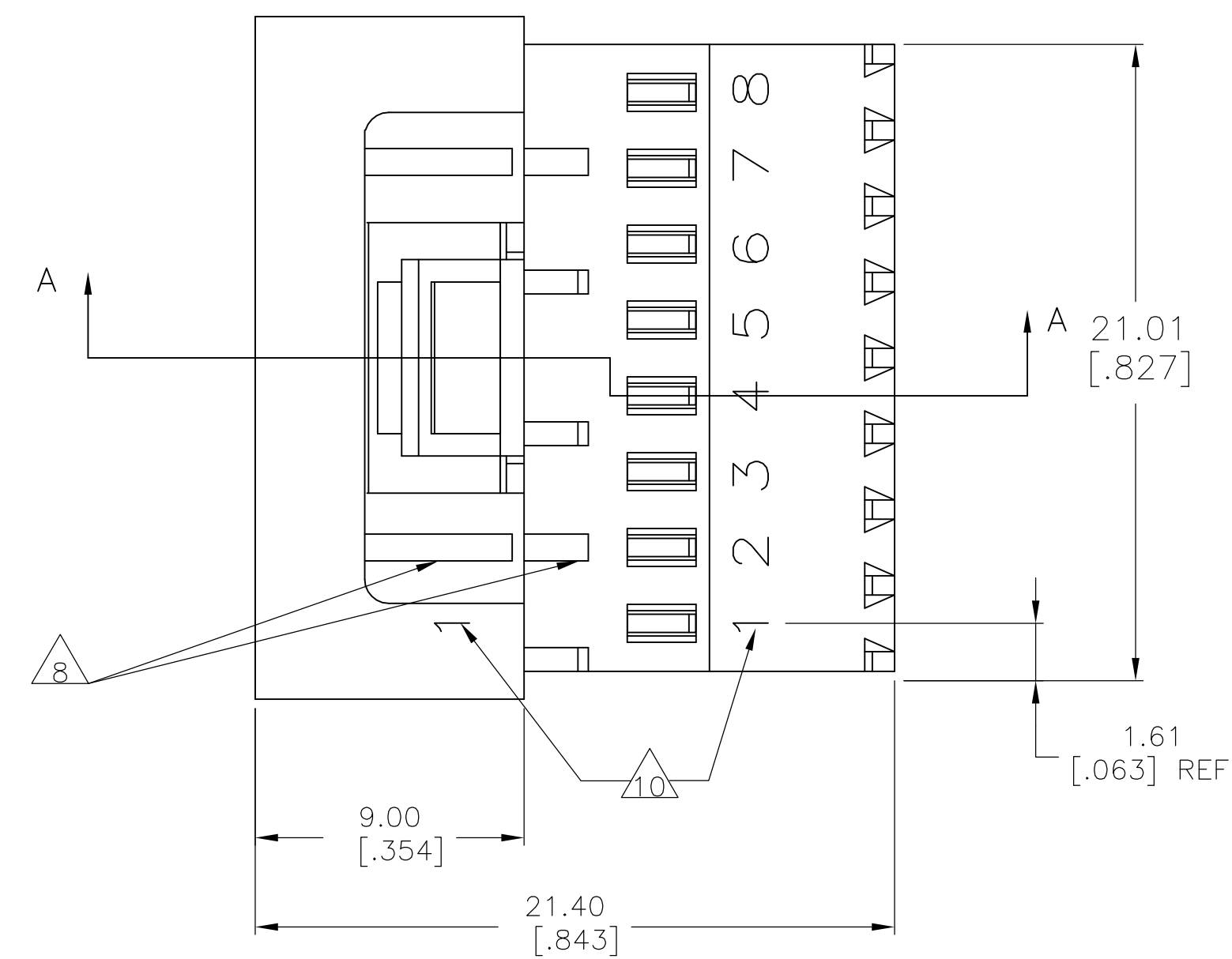
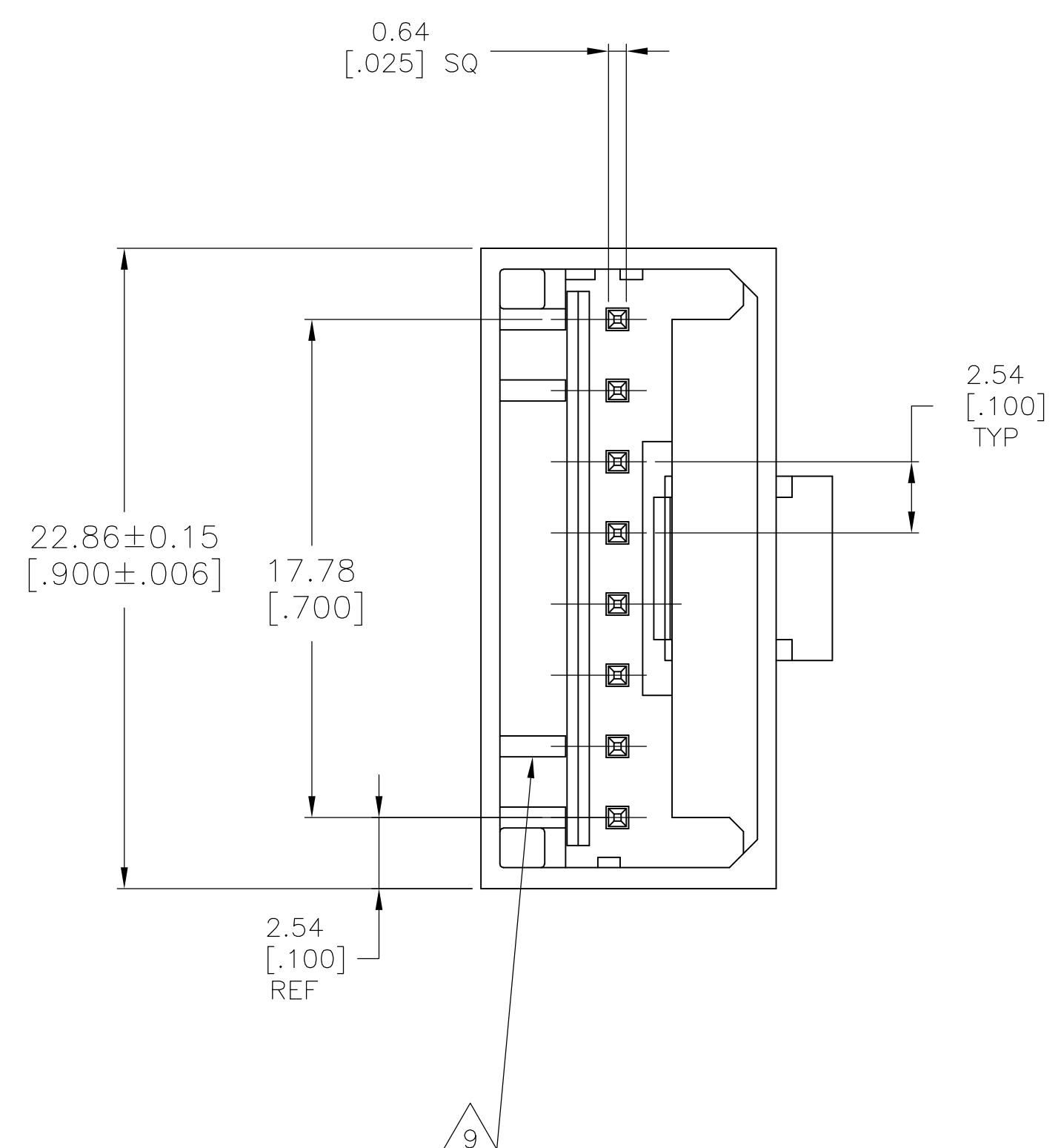
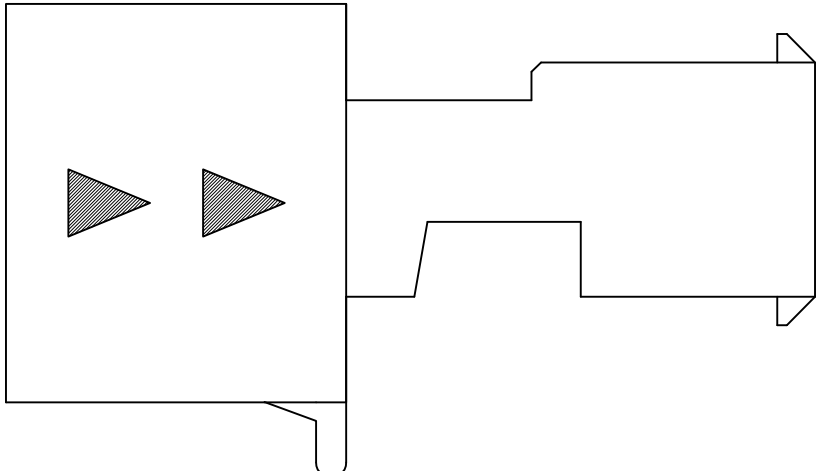
A

D

C

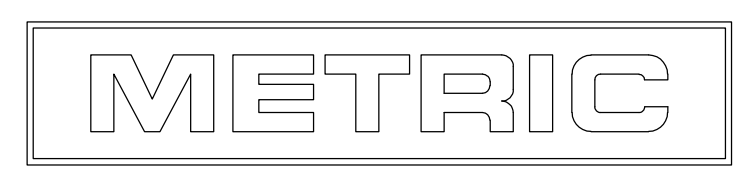
B

A



SECTION A-A

- 1 MATERIAL:
HOUSING— NYLON UL94V-2 (RED).
CONTACTS— 0.30 [.012] THK COPPER ALLOY
PLATING — MATTE TIN 0.00203[.000080] MIN THK.
- 2 CONTACTS ACCEPT 22 AWG (0.3 — 0.4 mm²) TIN PLATED
SOLID,CONCENTRIC FUSED STRANDED, OR
CONCENTRIC STRANDED (7 AND 19 STRAND) WIRE
WITH 1.52 [.060] MAX INSULATION DIAMETER.
- 3 MATES WITH STANDARD MTA-100 CONNECTORS:
OF THE SAME CIRCUIT SIZES
WITH SIMILARLY PLATED CONTACTS
WITH POLARIZING TABS.
- 4 ACCESSORIES:
REPLACEMENT IDC CONTACTS: 647030-1.
COVERS: SEE TABLE
- 5 DIMENSIONS IN BRACKETS ARE IN INCHES.
- 6 QUANTITY OF GUSSET RIBS VARIES WITH
CIRCUIT SIZE (SEE TABLE).
LOCATION MAY DIFFER FROM EXAMPLE SHOWN.
- 7 CIRCUIT ID MAY APPEAR FULLY NUMBERED OR SHOWING
LOCATION 1 ONLY DEPENDING ON CIRCUIT SIZE.



640642-8	643077-8	2	8	1744392-8
DUST COVER	STRAIN RELIEF COVERS	QTY OF GUSSET RIBS	NO. OF CIRCUITS	PART NO
4	ACCESSORIES	6		
THIS DRAWING IS A CONTROLLED DOCUMENT.		DWN JRRUTH 28DEC10	Tyco Electronics Corporation	
		CHK SAM MACE 28DEC10	Harrisburg, Pa 17105-3608	
DIMENSIONS: mm [INCHES]		APVD SAM MACE 28DEC10	NAME	
TOLERANCES UNLESS OTHERWISE SPECIFIED:		PRODUCT SPEC	MTA-100 POSTED CONNECTOR	
0 PLC ± -		APPLICATION SPEC	ASSEMBLY,CLOSED END,22 AWG,TIN	
1 PLC ± -		WEIGHT -	WITH ALIGNMENT ARROWS	
2 PLC ± 0.20 [.007]		SIZE	CAGE CODE	DRAWING NO
3 PLC ± -		A1	00779	1744392
4 PLC ± -		RESTRICTED TO		-
ANGLES ± -		CUSTOMER DRAWING	SCALE 5:1	SHEET 1 OF 1 REV A
FINISH				