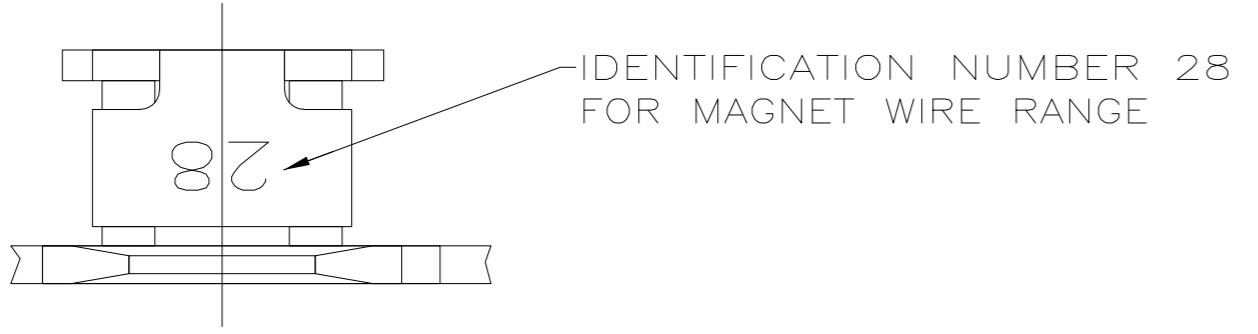
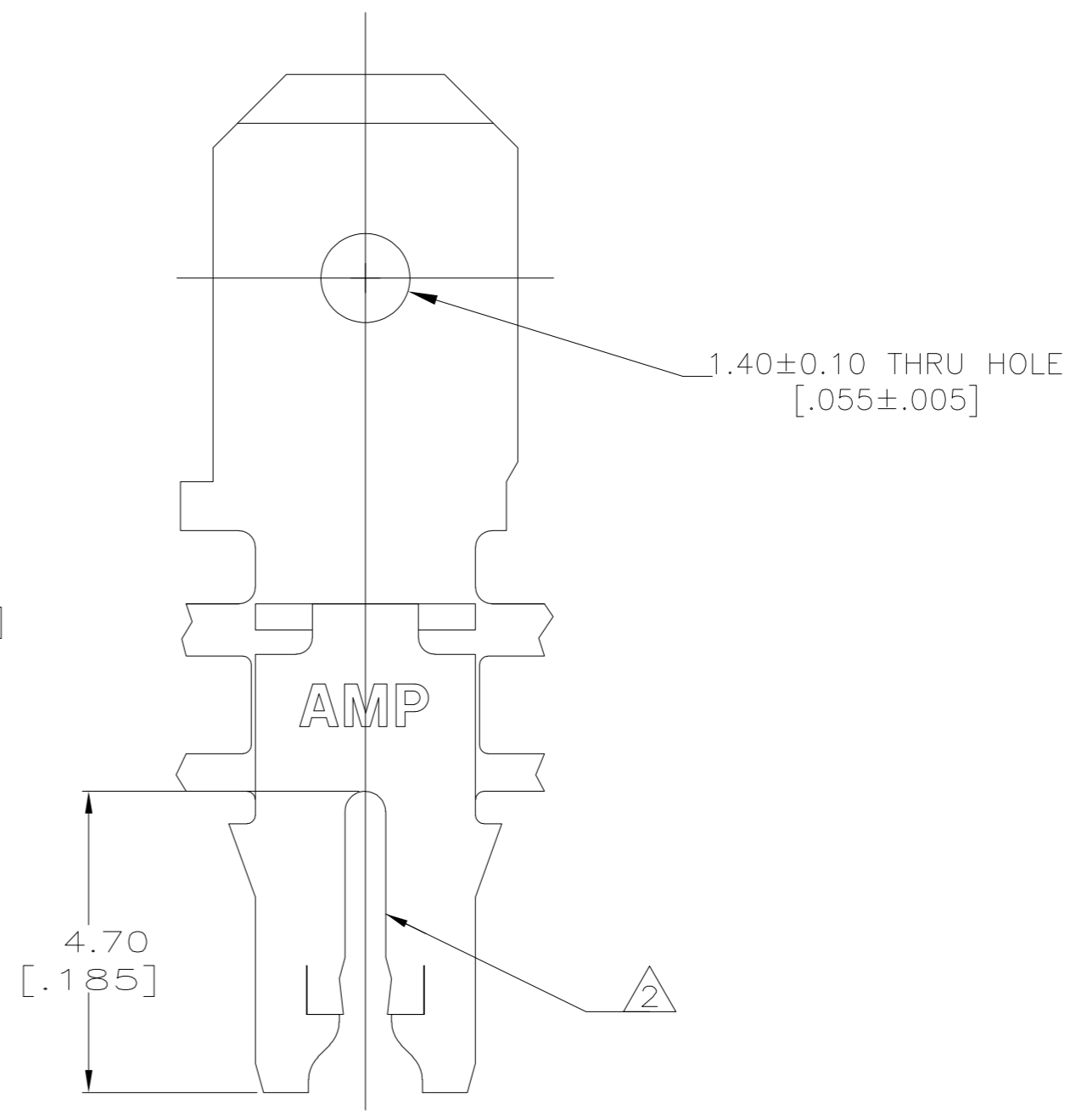
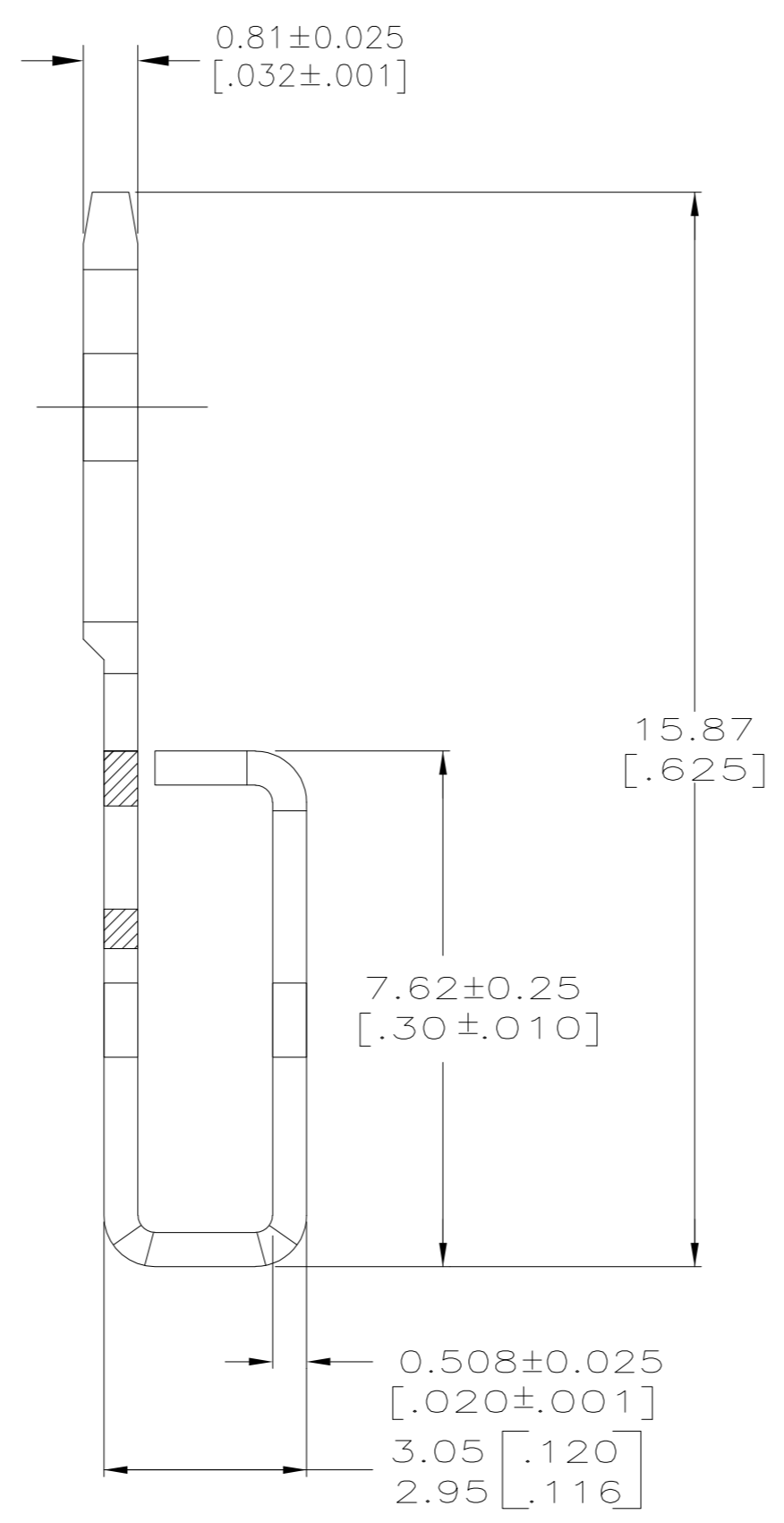
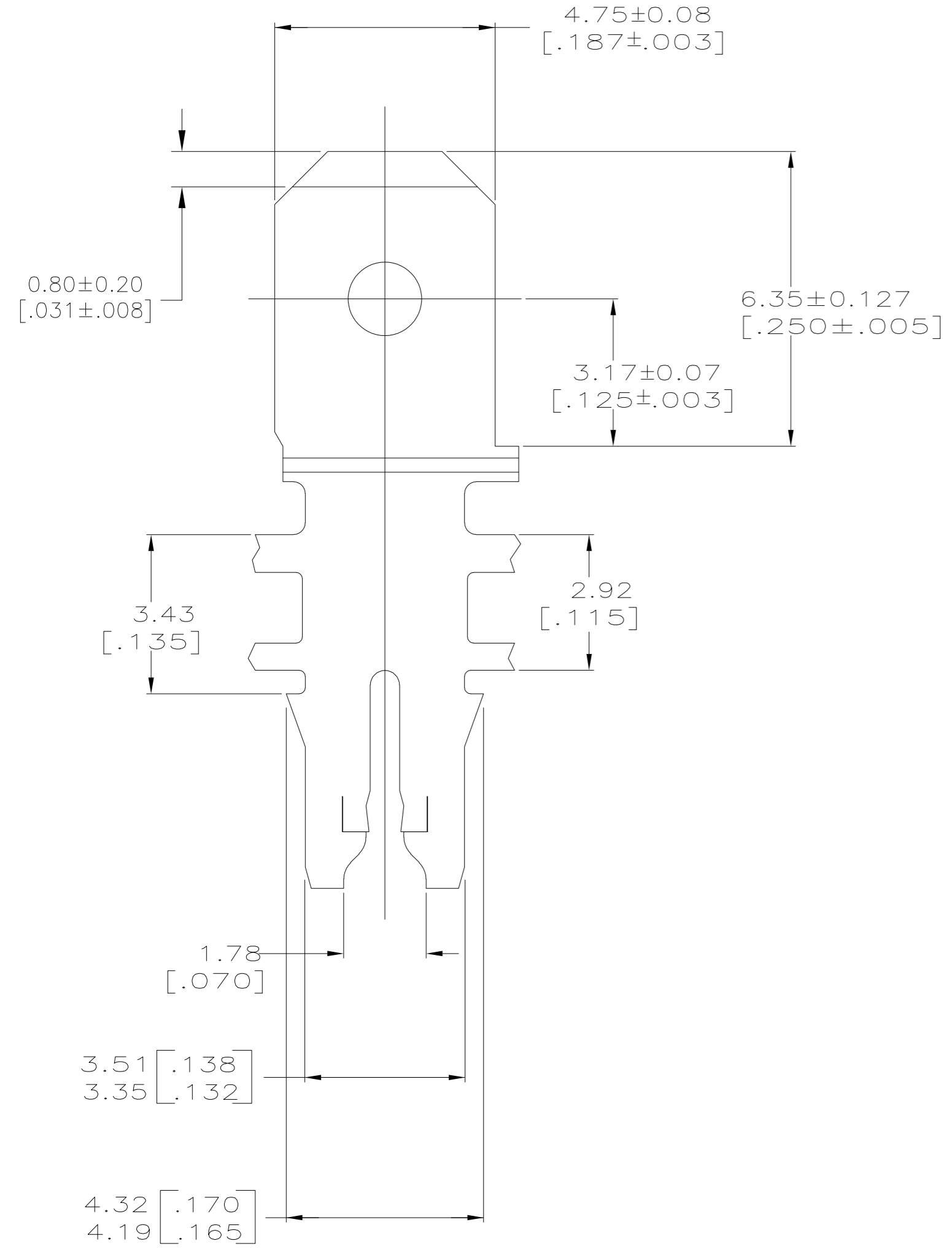


LOC		DIST		REVISIONS			
P	LTR	DESCRIPTION		DATE	DWN	APVD	
AF	50	A1		REVISE PER ECR-14-002148, FASR APPROVED	13DEC2014	GRZ	JL



- 1 CONTINUOUS STRIP ON REELS WITH TERMINALS LOCATED ON 5.59 ± 0.08 [$.220 \pm .003$] CENTERS.
- 2 SLOT TERMINATES A SINGLE MAGNET WIRE ONLY. COPPER RANGE: $0.90-1.15\text{mm}$ [#19-#17] AWG. ALUMINUM RANGE: $1.02-1.22\text{mm}$ [#18-#16.5] AWG, WITH CAVITY ANVIL HEIGHT TO BE 2.29 ± 0.13 [$.090 \pm .005$] FOR ALUMINUM WIRE ONLY.
- 3 AFTER INSERTION INTO PLASTIC HOLDER TAB PORTION MUST BE BENT OVER 45° TO 90° OR POTTED-IN TO PREVENT PULL-OUT WHEN MATING RECEPTACLE IS DISCONNECTED.
- 4 VARNISH RESIST OVER 0.002032 [$.000080$] MIN TIN PER MIL-T-10727.



1742996-1
 PART NO.

THIS DRAWING IS A CONTROLLED DOCUMENT.		DWN	JR RUTH	13NOV12		TE Connectivity		
DIMENSIONS: MM [INCHES]		CHK	LYONS LI	13NOV12		NAME		
TOLERANCES UNLESS OTHERWISE SPECIFIED:		APVD	LYONS LI	13NOV12		PRODUCT SPEC		
0 PLC ± - 1 PLC ± - 2 PLC ± 0.25 [.010] 3 PLC ± - 4 PLC ± - ANGLES ± - FINISH - 4		APPLICATION SPEC		108-2012		TERMINAL, TAB, 4.75 [.187] FASTON, MAG-MATE		
MATERIAL		114-2046 2		SIZE	CAGE CODE	DRAWING NO	RESTRICTED TO	
PREMILLED 4M BRASS		WEIGHT		A2	00779	C=1742996	-	
CUSTOMER DRAWING				SCALE	10:1	SHEET	1 of 1	
				REV	A1			