

REVISED		DATE	BY	APP'D
1	CONVERTED RADIAL DWG TO TYCO ACAD DWG	08/04	RF	JM
2	REVISED	24MAR10	RF	JM
3	REVISED	07APR10	RF	JM

1 SHELL: ALUMINUM ALLOY 6061 T651  
 INSERT RETENTION CLIP & JACKSCREW SLEEVE: COPPER ALLOY PER ASTM B194  
 JACKSCREW KEY, CENTER LOCK, & RETAINING NUT: STAINLESS STEEL PER AISI 316  
 PROTECTIVE COVER: THERMOPLASTIC ELASTOMER

2 SHELL: ELECTROLESS NICKEL PER SAE AMS-C-26074, CLASS 1.

3 DATE CODE - YEAR & WEEK (YY WW)

4 INDEXING POINT FOR POLARIZATION.

5 SHELL CAVITY FOR GPRB SERIES INSERTS WITH KEYING CODE A.

6 SHELL CAVITY FOR GPRB SERIES INSERTS WITH KEYING CODE B.

7 PROTECTIVE COVERS NOT SHOWN FOR CLARITY.

8 SCREW HEAD DIAMETER: 6.00 [.236] MAX.

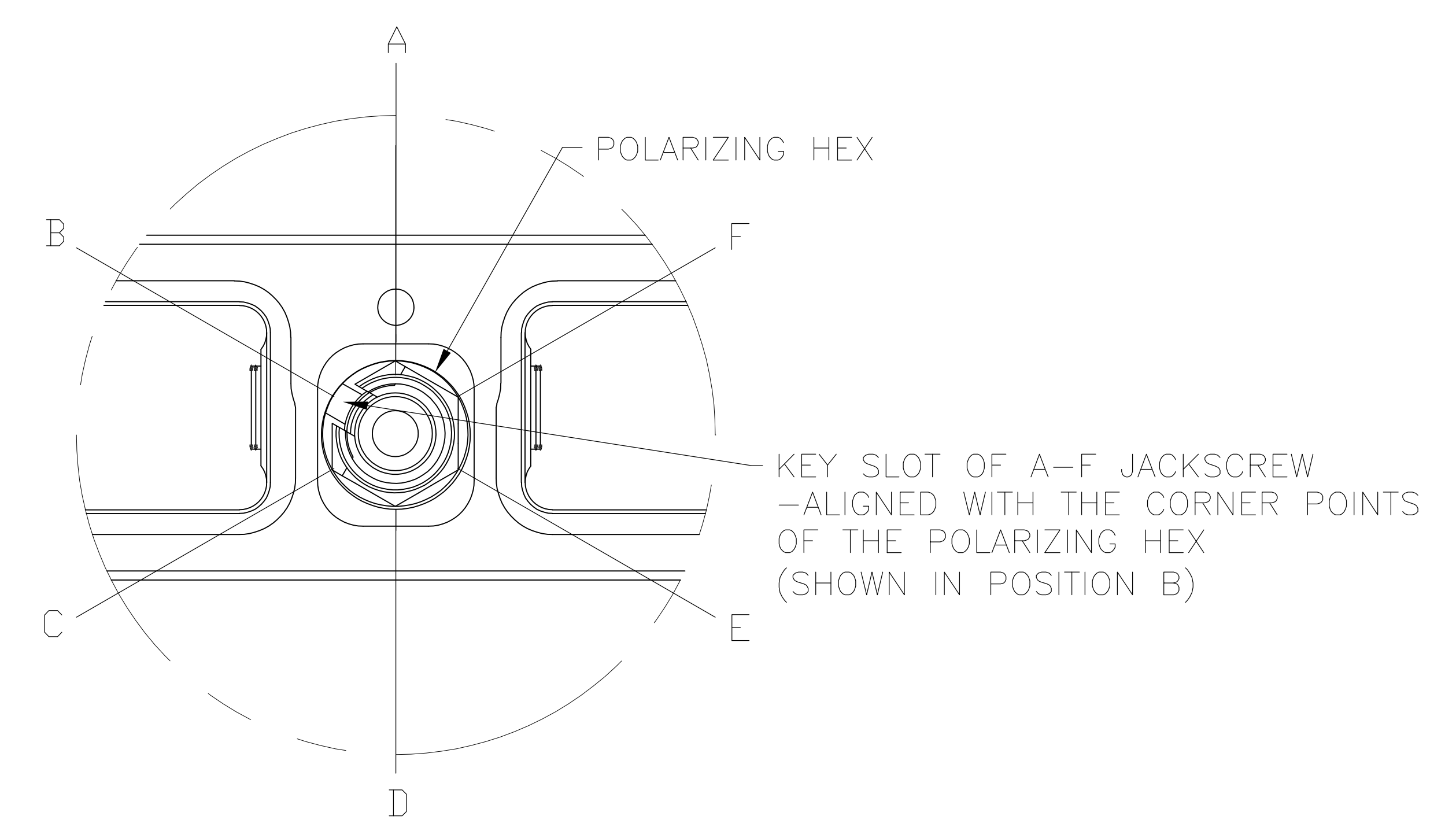
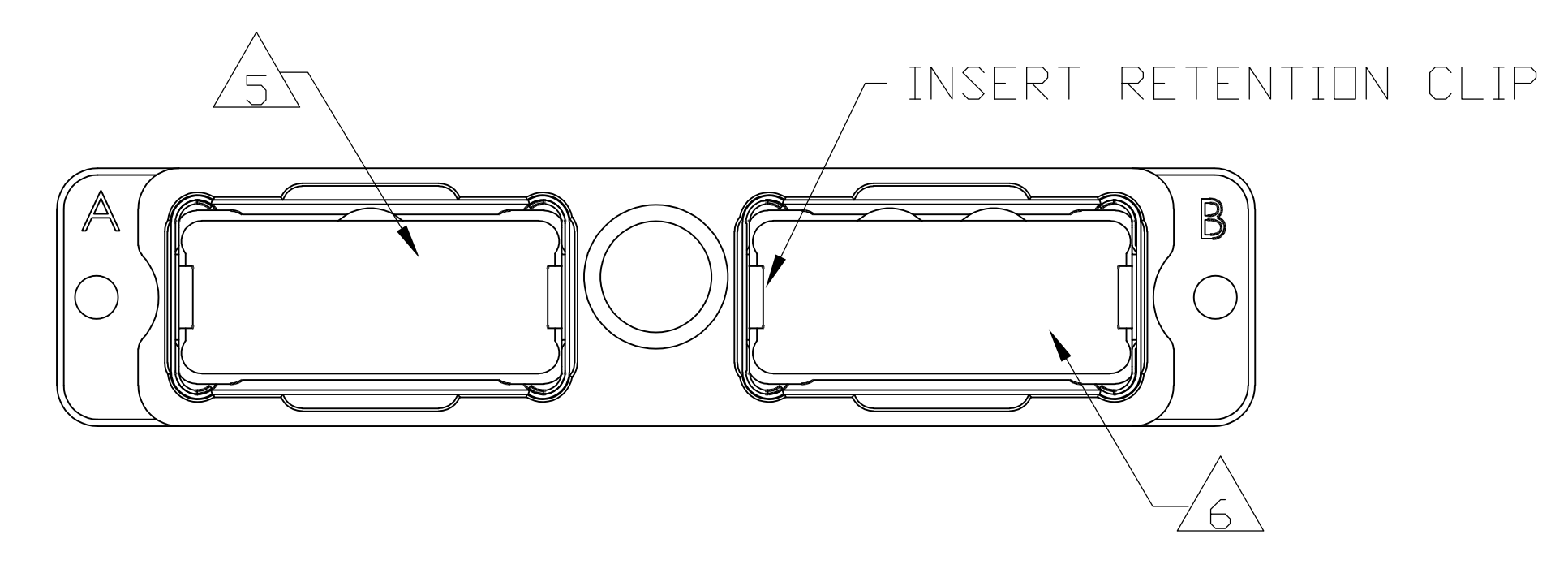
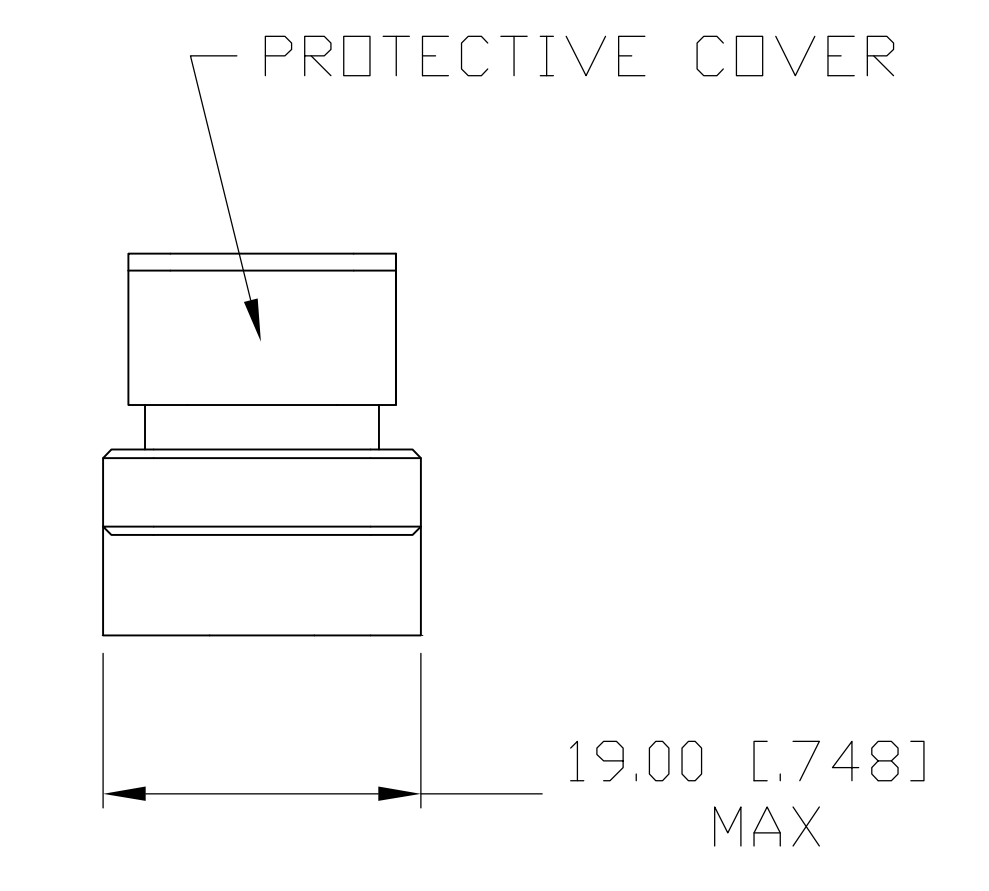
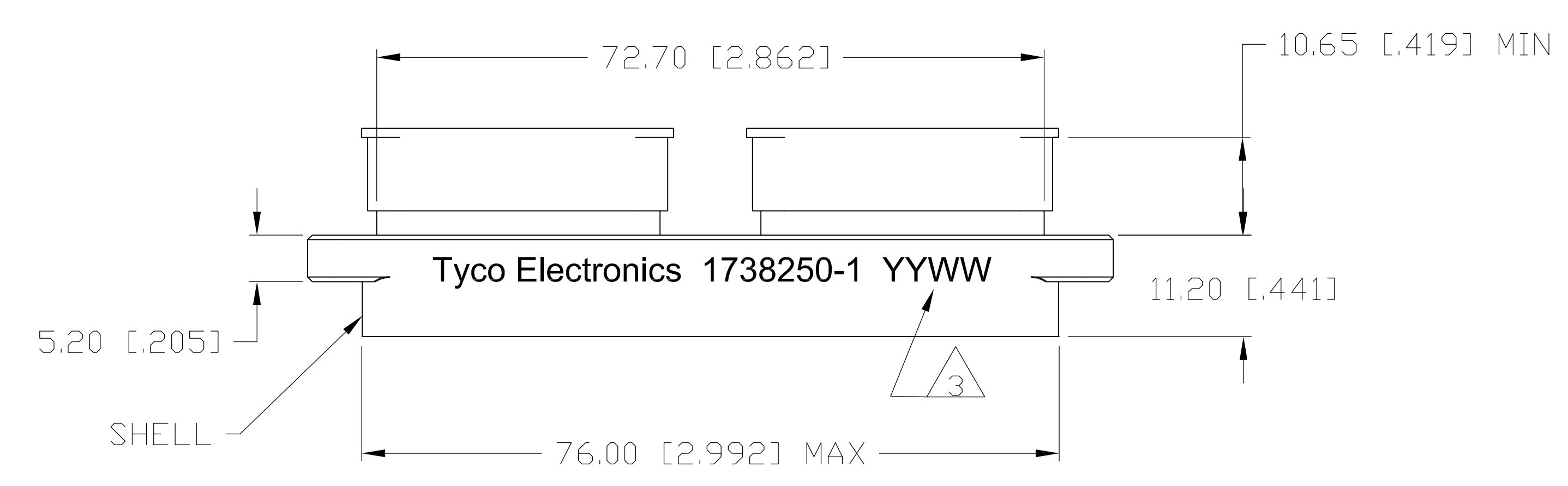
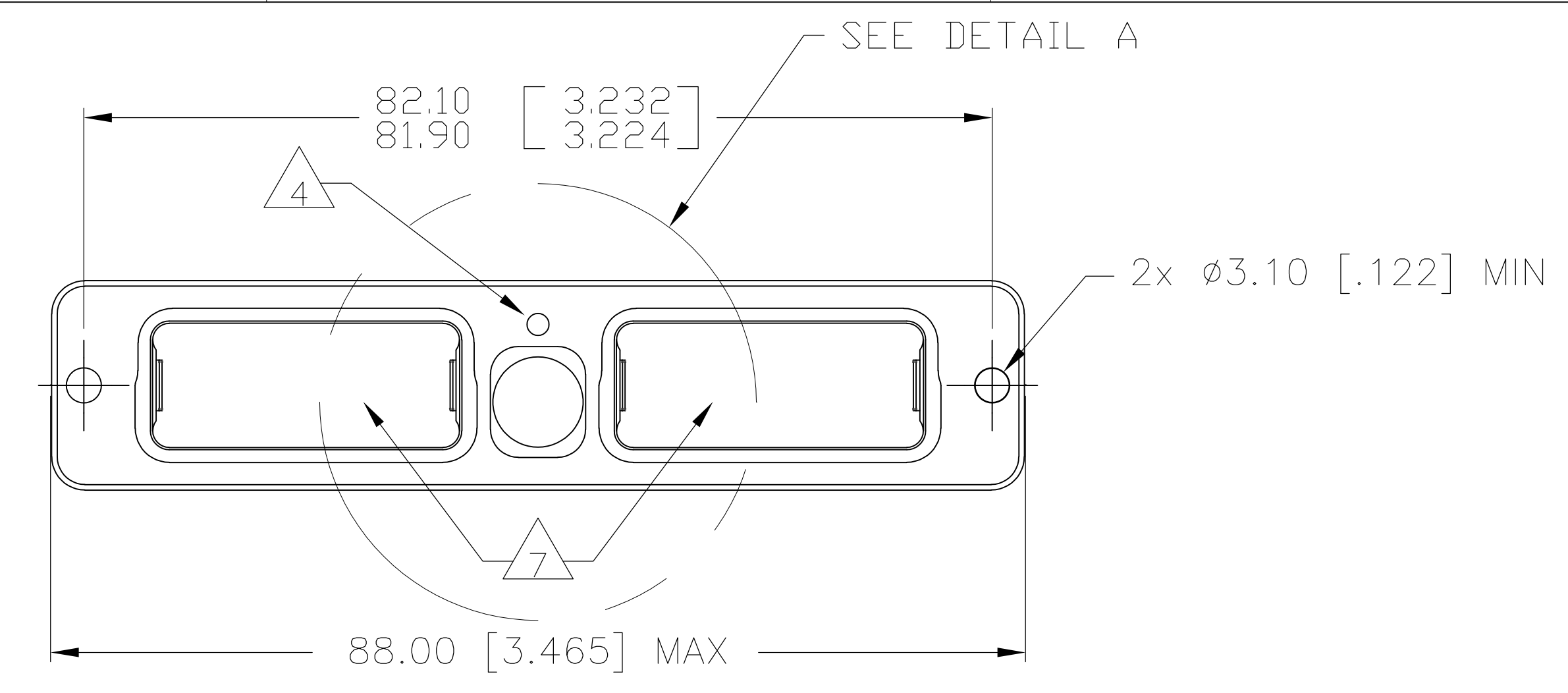
9 THE JACKSCREW AND RETAINING NUT ARE SHIPPED UNASSEMBLED. THE CUSTOMER SHALL APPLY LOCTITE® PRODUCT 272 THREADLOCKING ADHESIVE WHEN INSTALLING THESE ON THE SHELL ASSEMBLY. LOCTITE® IS A REGISTERED TRADEMARK OF LOCTITE CORPORATION.

10 A SPANNER WRENCH TOOL, TYCO ELECTRONICS P/N 1738220-1 (WITH 1/4-in ADAPTER) OR 1738221-1 (WITH T-HANDLE), IS USED TO LOCK THE RETAINING NUT. RECOMMENDED LOCKING TORQUE: 1.5 N-m [13 in-lb].

11. PITCH FOR SIDE-BY-SIDE MOUNTING: 19.50 [.768] MIN.

12. DESCRIPTIVE PART NUMBER: GPRB2PD12N  
 SERIES: GPRB  
 SHELL SIZE: 2 (TWO-CAVITY SHELL)  
 SHELL STYLE: P (PLUG)  
 MODIFICATION CODE: D (2x ø3.10mm THRU HOLES - FOR PANEL MOUNTING)  
 LOCKING AND POLARIZING DEVICE: 1 (JACKSCREW)  
 POLARIZATION CODE: 2 (A-F JACKSCREW HARDWARE SHIPPED UNASSEMBLED)  
 SHELL PLATING: N (NICKEL PLATING)

13. THIS PRODUCT IS SOLD BY TYCO ELECTRONICS UNDER A LICENSE FROM RADIAL SA.



DETAIL A - JACKSCREW KIT ASSEMBLED

THIS PRINT IS  
**PRELIMINARY**  
 UNQUALIFIED PRODUCT  
 CONTACT PRODUCT ENGINEERING  
 BEFORE USING THIS PRINT

1738250-1  
 PART NUMBER

THIS DRAWING IS A CONTROLLED DOCUMENT.		DATE	BY	APP'D	Tyco Electronics Corporation Harrisburg, Pa 17105-3608	
DIMENSIONS: UNLESS OTHERWISE SPECIFIED:		UNIT	SCALE	DATE	Tyco Electronics Corporation	
Ø	D. P.L.C.	± .005			PLUG SHELL KIT, WITH TWO 3.10mm DIA MOUNTING HOLES, WITH A-F JACKSCREW, GPRB2	
±	F. P.L.C.	± .010 [0.08]			SIZE DATE CODE DRAWING NO	
±	G. P.L.C.	± .020 [0.08]			A0 00779 1738250	
±	H. P.L.C.	± .030 [0.08]			MATERIAL FINISH	
±	I. P.L.C.	± .040 [0.08]			CUSTOMER DRAWING	
±	J. P.L.C.	± .050 [0.08]			SCALE 1:1 SHEET 1 OF 2 REV 3	

