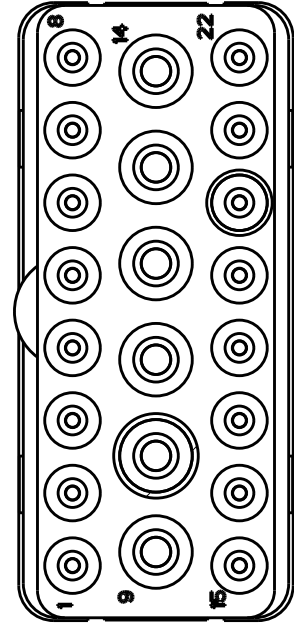
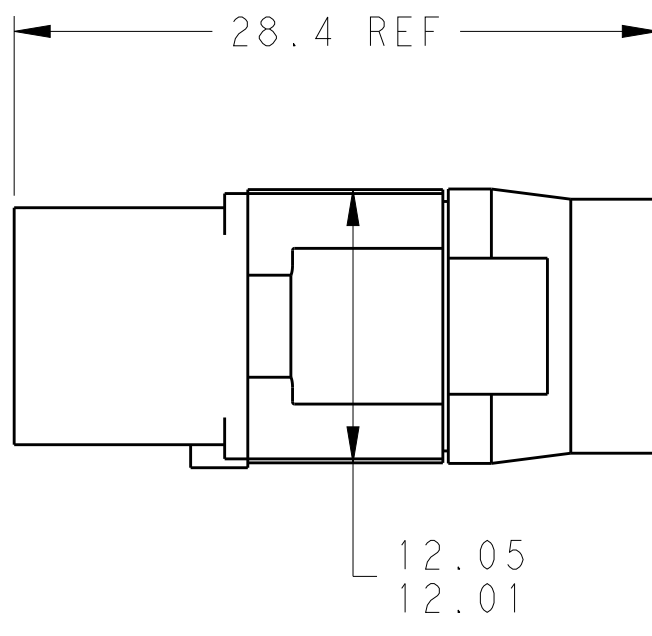
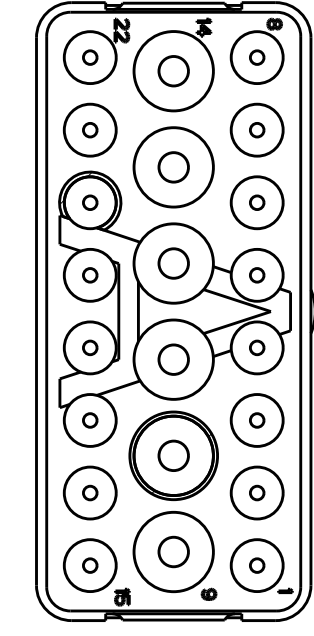
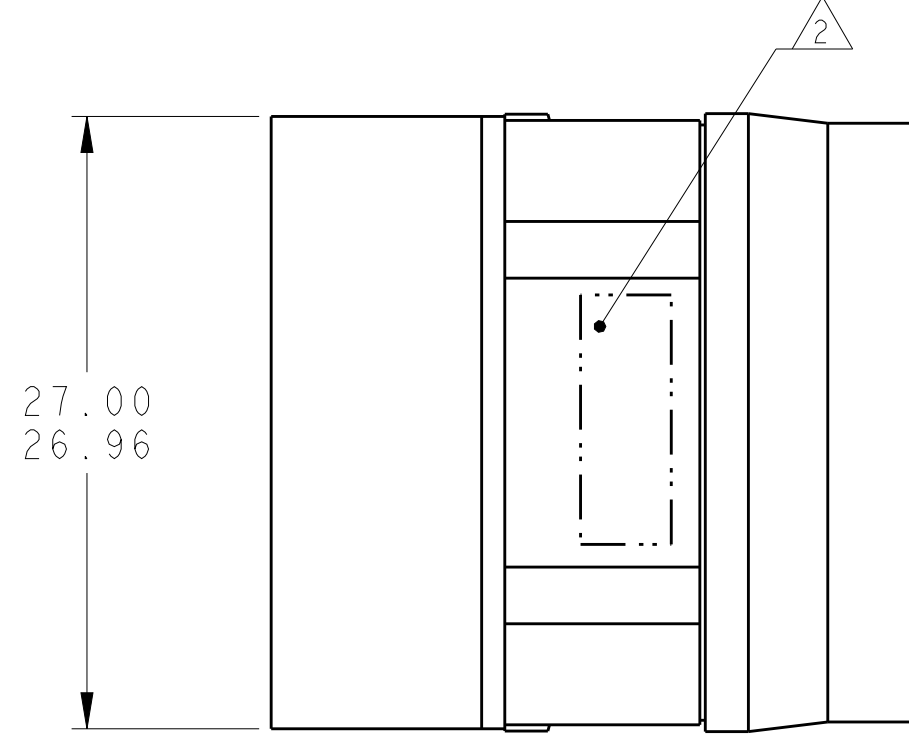


THIS DRAWING IS UNPUBLISHED. RELEASED FOR PUBLICATION
 © COPYRIGHT - BY - ALL RIGHTS RESERVED.

LOC		DIST		REVISIONS			
P	LTR	DESCRIPTION	DATE	DWN	APVD		
	B	REVISED PER ECO-12-018187	2NOV2012	CT	KH		



MATING FACE



THIS PRODUCT HAS NOT COMPLETED
 VALIDATION TESTING

- 1 FRONT & REAR INSULATORS: HIGH-TEMP THERMOPLASTIC OR THERMOSET EPOXY PER ASTM D5948.
 CONTACT RETENTION CLIPS: STAINLESS STEEL PER AISI 302 OR COPPER ALLOY PER ASTM B194
 REAR GROMMET: FLUROSILICONE ELASTOMER PER MIL-R-25988 B EXCEPT 4.6.6.1.
- 2 PART TO BE MARKED WITH TE IDENTIFICATION, TE PART NO.
 AND DATE CODE: YEAR & WEEK (YY WW) IN APPROXIMATE AREA SHOWN.
- 3. THIS INSERT CONTAINS: 16 CAVITIES FOR SIZE 20 SOCKET CONTACTS
 6 CAVITIES FOR SIZE 16 SOCKET CONTACTS
- 4. THIS PRODUCT IS SOLD BY TYCO ELECTRONICS UNDER A LICENSE FROM RADIALL SA.

NON-ENV	GPRBN22SA	1738149-2
ENVIRONMENTAL	GPRBE22SA	1738149-1
REMARKS	DESCRIPTIVE PART NO.	PART NUMBER

THIS DRAWING IS A CONTROLLED DOCUMENT.		DWN C.C. THOMAS 10-8-10	TE Connectivity	
DIMENSIONS:		CHK K. HOGAN 10-8-10		
mm		APVD K. HOGAN 10-8-10		
TOLERANCES UNLESS OTHERWISE SPECIFIED:		PRODUCT SPEC	NAME INSERT ASSEMBLY, SOCKET, ARRANGEMENT 22, KEY A, GPRB	
0 PLC ±		APPLICATION SPEC	SIZE CAGE CODE DRAWING NO RESTRICTED TO	
1 PLC ±		WEIGHT	A200779 C-1738149	
2 PLC ±		CUSTOMER DRAWING	SCALE 3:1 SHEET 1 OF 1 REV B	
3 PLC ±				
4 PLC ±				
ANGLES ±				
FINISH				