

D

C

B

A

NOTES:

1. MATERIALS:

HOUSING : LCP, HI-TEMP THERMOPLASTIC, GLASS FILLED, UL94V-0, COLOR: BLACK.

CONTACTS : COPPER ALLOY.

SOLDERPEGS: COPPER ALLOY.

2. FINISH:

CONTACT:

ENGAGEMENT : 0.00076 [.000030] MIN. GOLD, OR GOLD FLASH OVER 0.00076 [.000030] MIN. PALLADIUM NICKEL

SOLDER TAIL: 0.00254 [.000100] MIN. MATTE TIN

UNDERCOAT : 0.00127 [.000050] MIN. NICKEL ALL OVER

SOLDER TAIL: 0.00254 [.000100] MIN. MATTE TIN

UNDERCOAT : 0.00127 [.000050] MIN. NICKEL ALL OVER

3. COMPLIANCE OF THE SOLDER TAILS AND HOUSING STAND-OFFS TO BE WITHIN 10mm WHEN CONNECTOR IS PLACED UPRIGHT, IMMEDIATELY AFTER APPLICATION.

AS SHOWN WITHOUT PICKUP CAP.

5 MATING DIRECTION.

6 CONTACT FREE HEIGHT : 12.34 REF
NOMINAL WORKING HEIGHT: 11.90 REF
MINIMUM WORKING HEIGHT: 11.60 REF
MAXIMUM WORKING HEIGHT: 12.20 REF

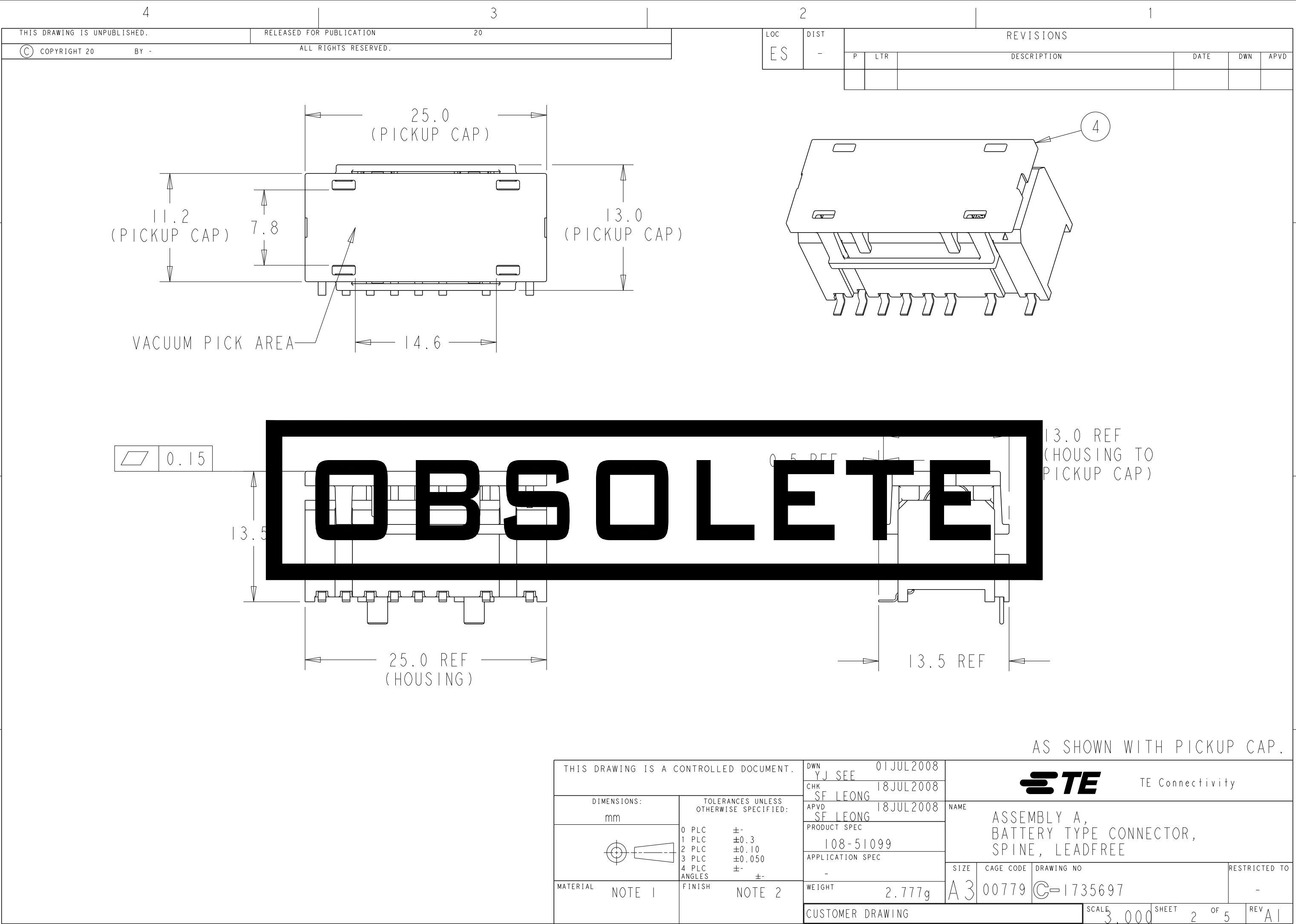
7 PACKAGED IN SOFT TRAY.

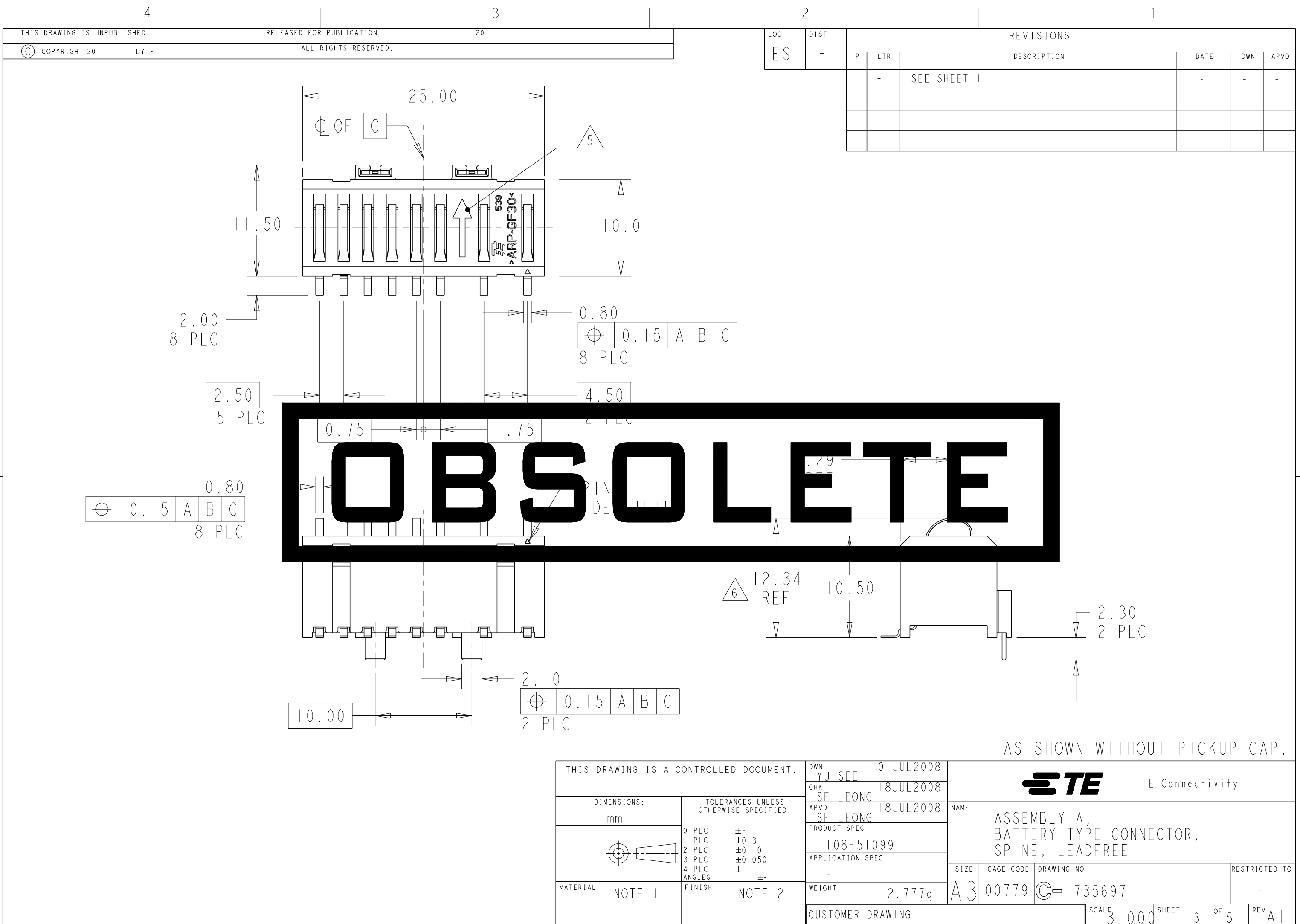
OBSELETE

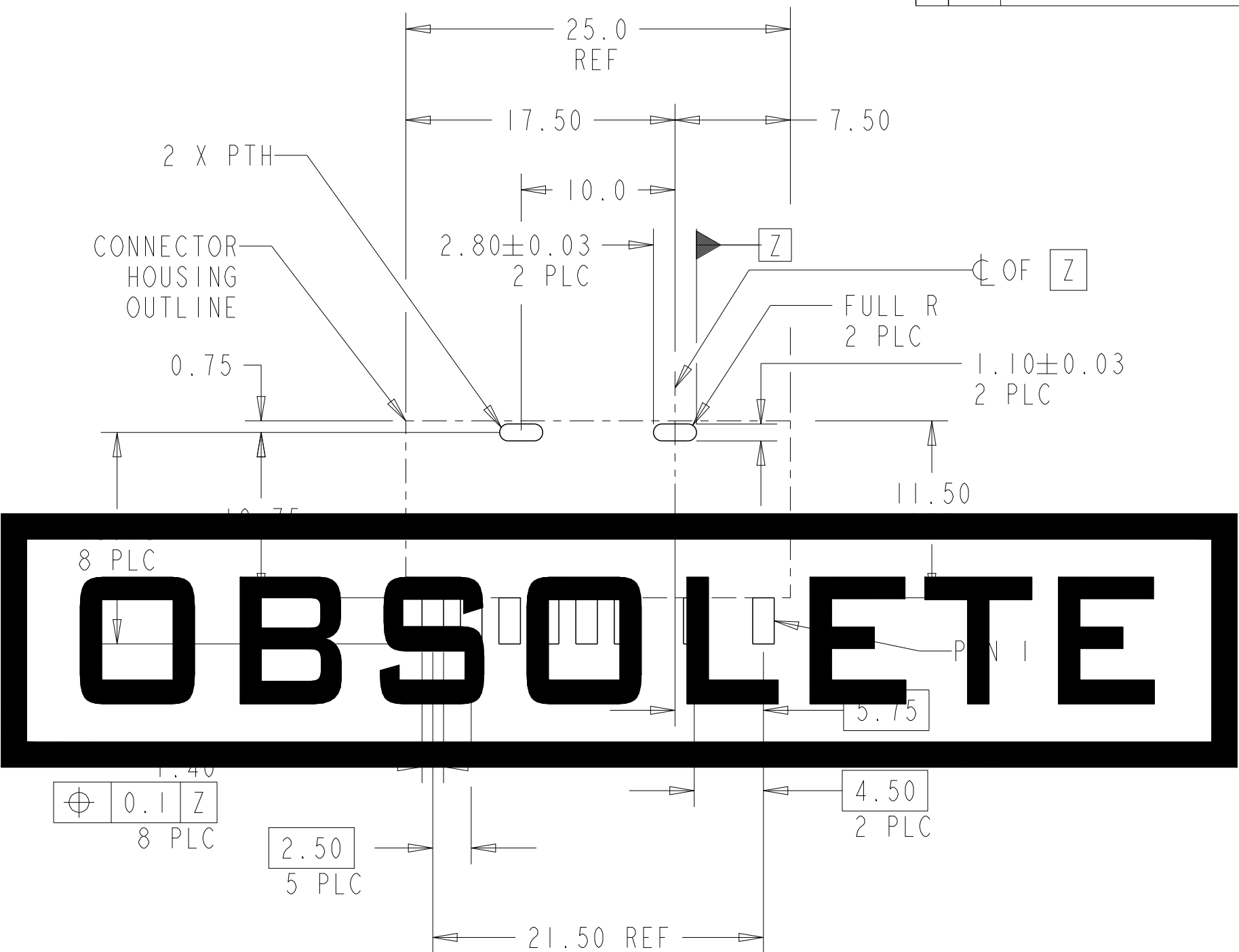
TE

TE Connectivity


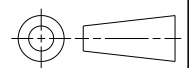
THIS DRAWING IS A CONTROLLED DOCUMENT.		DWN YJ SEE 01JUL2008	<div><div>TE</div>TE Connectivity</div>		
DIMENSIONS: mm		CHK SF LEONG 18JUL2008			
		APVD SF LEONG 18JUL2008	NAME ASSEMBLY A, BATTERY TYPE CONNECTOR, SPINE, LEADFREE		
		PRODUCT SPEC 108-51099			
TOLERANCES UNLESS OTHERWISE SPECIFIED:		APPLICATION SPEC -	SIZE A3	CAGE CODE 00779	DRAWING NO C-1735697
MATERIAL NOTE 1		FINISH NOTE 2	WEIGHT 2.777g	RESTRICTED TO -	
7 SOFT TRAY		1-1735697-1	SCALE 6.000		
4 TAPE & REEL		1735697-1	SHEET 1 OF 5		
PACKAGING TYPE		PART NUMBER	REV AI		







RECOMMENDED PCB LAYOUT

THIS DRAWING IS A CONTROLLED DOCUMENT.		DWN YJ SEE 01JUL2008		 TE Connectivity						
DIMENSIONS:		CHK SF LEONG 18JUL2008								
mm	TOLERANCES UNLESS OTHERWISE SPECIFIED:		APVD SF LEONG 18JUL2008		NAME ASSEMBLY A, BATTERY TYPE CONNECTOR, SPINE, LEADFREE					
	0 PLC ±-		PRODUCT SPEC							
	1 PLC ±0.3		108-51099							
	2 PLC ±0.10		APPLICATION SPEC							
	3 PLC ±0.050		-							
4 PLC ±-		ANGLES ±-		SIZE	CAGE CODE	DRAWING NO	RESTRICTED TO			
MATERIAL	NOTE 1	FINISH	NOTE 2	WEIGHT	A3	00779	C-1735697	-		
CUSTOMER DRAWING					SCALE	3.000	SHEET	4 OF 5	REV	A1

D

C

B

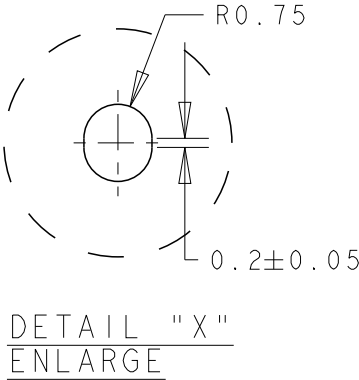
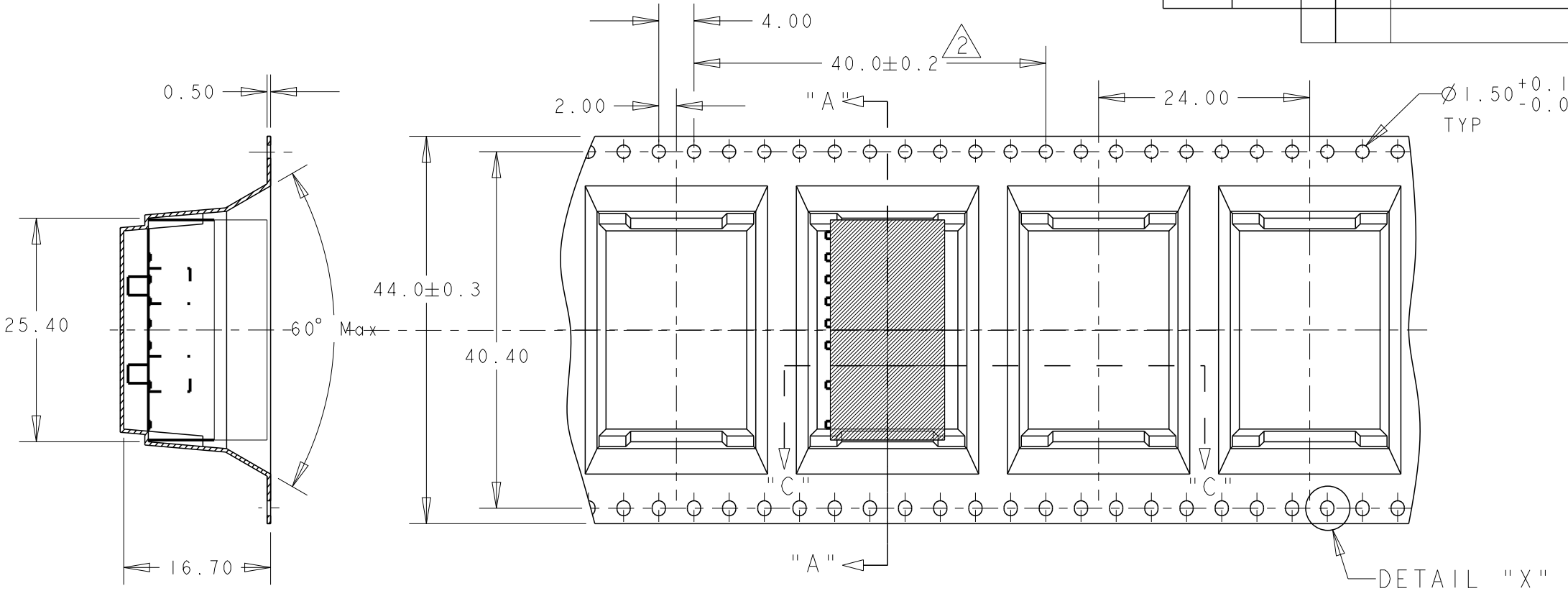
A

D

C

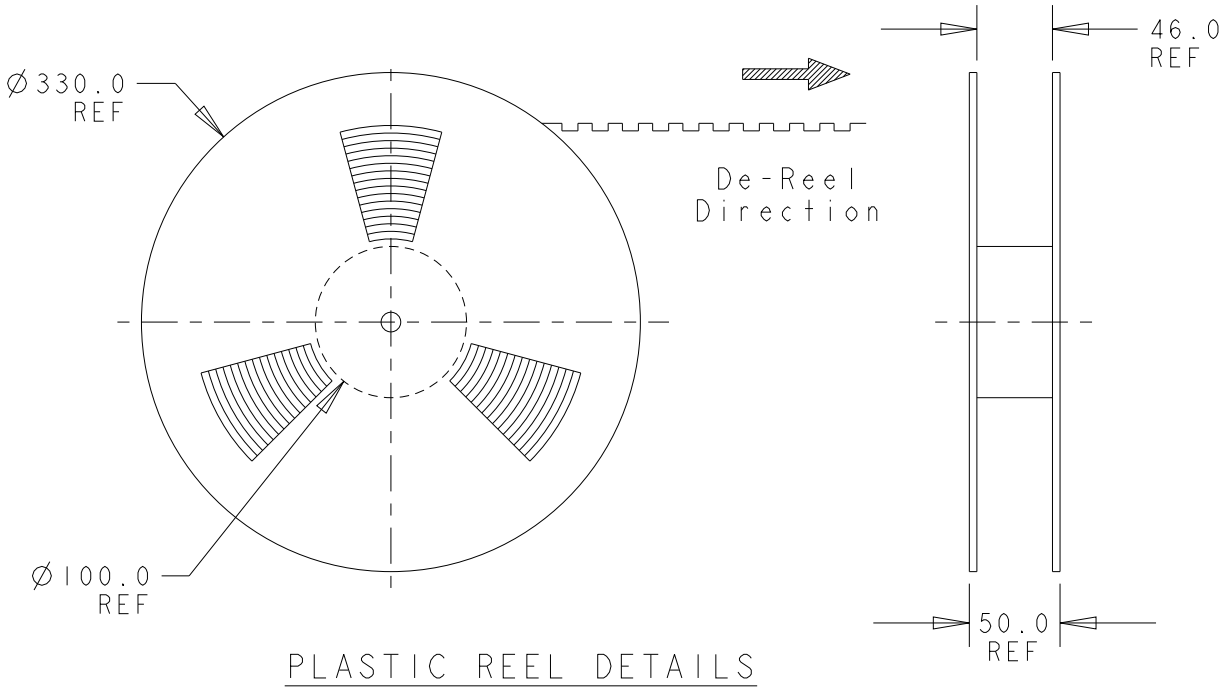
B

A




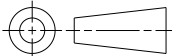
SECTION A-A

OBsolete



3. 100 COMPONENTS PER REEL

FOR P/N 1735697-1 ONLY

THIS DRAWING IS A CONTROLLED DOCUMENT.		DWN YJ SEE 01JUL2008		<div> TE Connectivity</div>			
		CHK SF LEONG 18JUL2008					
DIMENSIONS: mm		TOLERANCES UNLESS OTHERWISE SPECIFIED:		NAME ASSEMBLY A, BATTERY TYPE CONNECTOR, SPINE, LEADFREE			
		APVD SF LEONG 18JUL2008					
		PRODUCT SPEC 108-51099					
		APPLICATION SPEC -					
MATERIAL NOTE 1		FINISH NOTE 2		SIZE A3	CAGE CODE 00779	DRAWING NO C-1735697	RESTRICTED TO -
				WEIGHT 2.777g			
CUSTOMER DRAWING				SCALE 3.000	SHEET 5	OF 5	REV A1