

4

3

2

1

THIS DRAWING IS UNPUBLISHED.

RELEASED FOR PUBLICATION

-,-



COPYRIGHT

-

BY TYCO ELECTRONICS CORPORATION.

ALL RIGHTS RESERVED.

LOC

DIST

REVISIONS

DW

P

LTR

DESCRIPTION

DATE

DWN

APVD

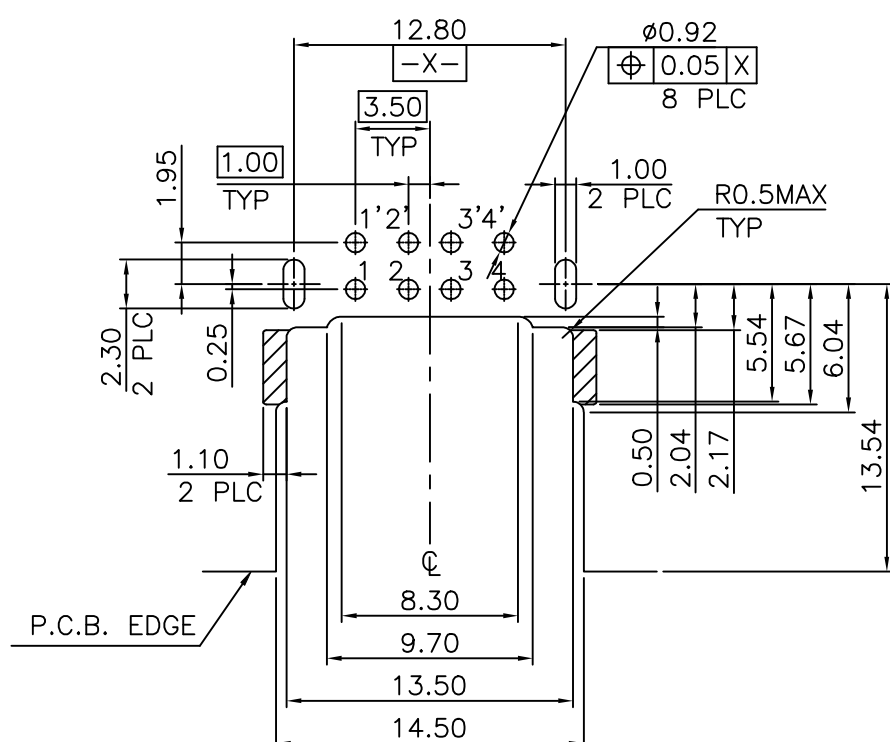
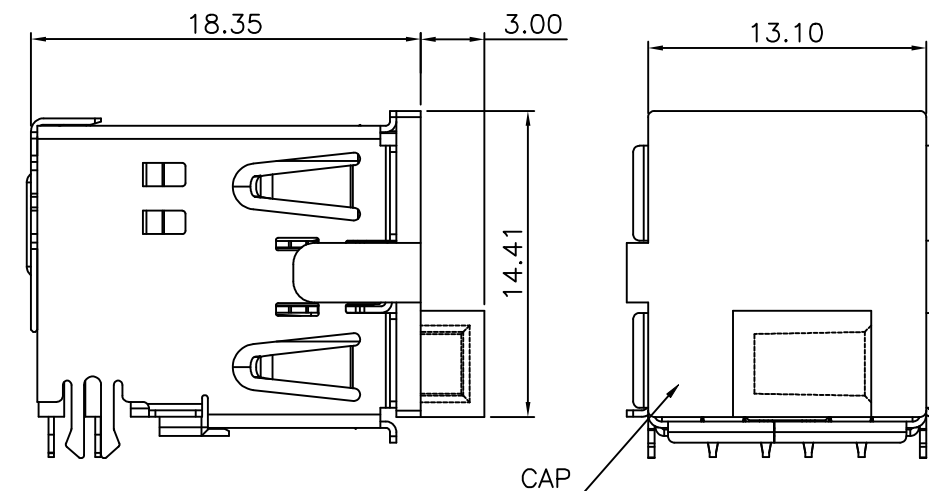
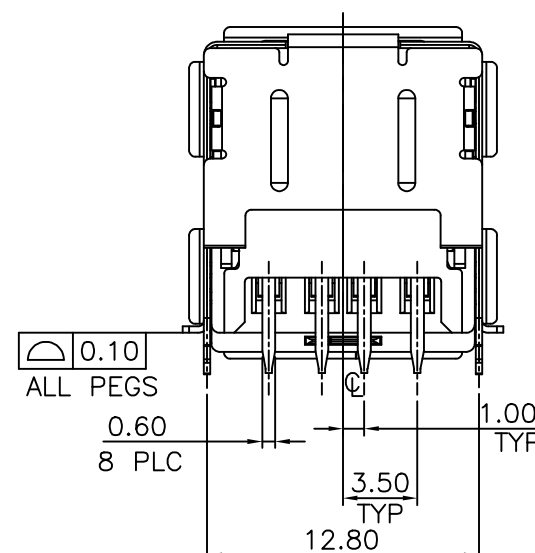
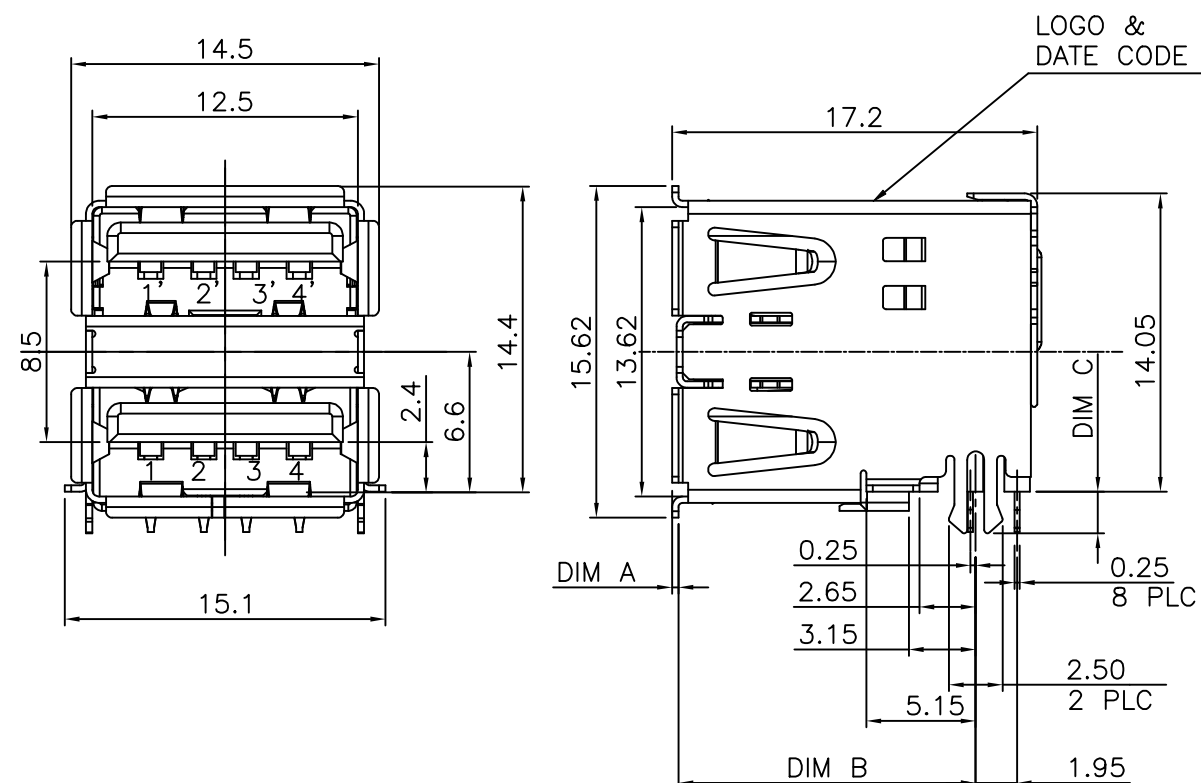
G8

REVISED (ECR-18-009050)

05JUL18

T.Z

S.L



NOTES:

1. MATERIAL:

⑧ HOUSING: PA9T WITH 33% GF, UL 94V-0 RATED, BLACK COLOR.

⑧ SPACER: PA9T WITH 33% GF, UL 94V-0 RATED, BLACK COLOR.

⑧ CAP: PA9T WITH 33% GF, UL 94V-0 RATED, BLACK COLOR.

CONTACT: PHOSPHOR BRONZE.

⑧ FRONT SHIELD: SUS304 1/2H.

REAR SHIELD: SPCC

⑧ GROUNDING STRIP: SUS304 1/2H

2. FINISH:

CONTACT: 0.762mm [30m"] MIN. GOLD PLATING ON CONTACT AREA.

3.048mm [120m"] MIN. MATTE TIN PLATING ON SOLDER TAILS, WITH ENTIRE CONTACT UNDERPLATED 1.27mm [50m"] MIN. NICKEL.

⑧ FRONT SHIELD: 0.762mm [30m"] MIN. SOLDERABLE NICKEL PLATING OVERALL.

REAR SHIELD: 0.762mm [30m"] MIN. NICKEL PLATING.

0.762mm [30m"] MIN. Cu UNDER PLATING OVERALL.

⑧ GROUNDING STRIP: 0.762mm [30m"] MIN. SOLDERABLE NICKEL PLATING OVERALL.

3. REFLOW SOLDER CAPABLE TO 260°C PER TE SPEC 109-201, CONDITION B.

1.90	14.30	0	W/	TAPE & REEL	1734062-3	
2.20	13.95	0.35	W/O	TUBE	1734062-2	OBSOLETE
				TAPE & REEL	1734062-1	OBSOLETE
DIM C	DIM B	DIM A	CAP	PACKAGE	PART NUMBER	NOTE

RECOMMEND P.C.B LAYOUT (THICKNESS 1.2~1.4mm)
(COMPONENT SIDE) TOLERANCE ±0.05mm

THIS DRAWING IS A CONTROLLED DOCUMENT.		DWN F. YANG 10SEP2009	TE Connectivity			
		CHK S. CHIEN 10SEP2009				
		APVD W. KODAMA 10SEP2009	NAME			
DIMENSIONS: MM		PRODUCT SPEC 108-57481	USB CONNECTOR, A SERIES, STACKED, OFFSET TYPE			
		QUALIFICATION TEST REPORT 501-57557				
MATERIAL SEE NOTE		FINISH SEE NOTE	SIZE A3	CAGE CODE 00779	DRAWING NO C=1734062	RESTRICTED TO -
			WEIGHT 4.71 GRAMS			
			CUSTOMER DRAWING	SCALE -	SHEET 1 OF 24	REV G8

4

3

2

1

THIS DRAWING IS UNPUBLISHED.

RELEASED FOR PUBLICATION

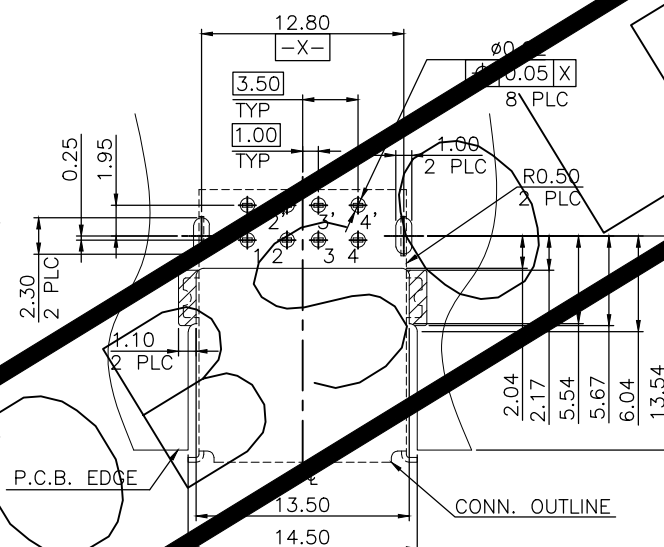
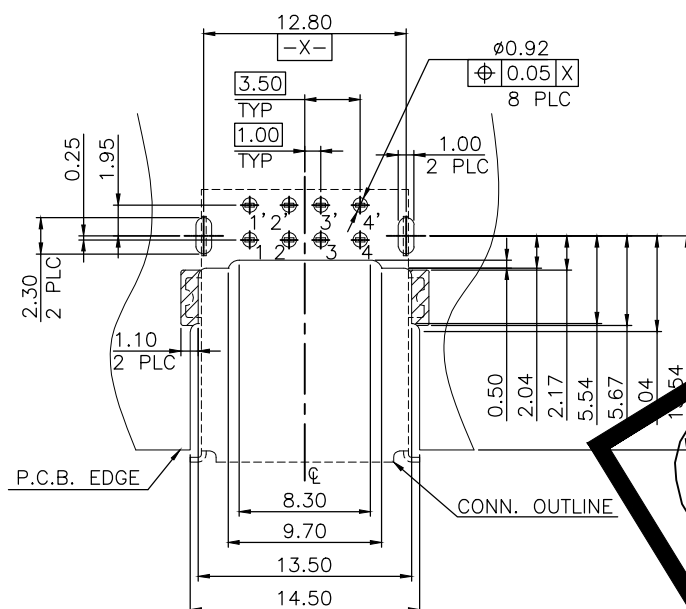
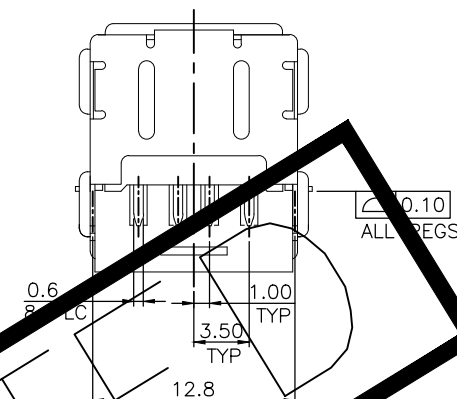
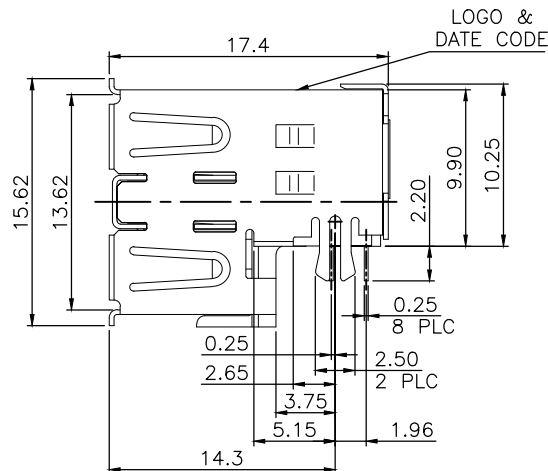
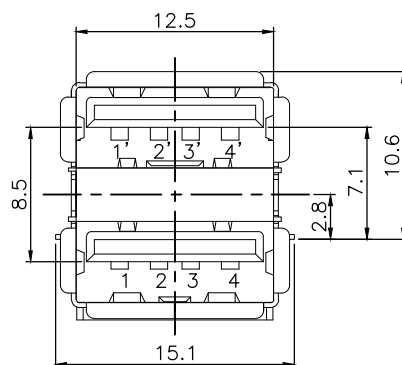
© COPYRIGHT BY TYCO ELECTRONICS CORPORATION. ALL RIGHTS RESERVED.

LOC
DW

DIST

REVISIONS

P	LTR	DESCRIPTION	DATE	DWN	APVD
		SEE SHEET 1.			



NOTE:

- MATERIAL:
HOUSING: PA9T WITH 30% GF, UL 94V-0 RATED, BLACK COLOR.
SPACER: PA9T WITH 30% GF, UL 94V-0 RATED, BLACK COLOR.
CONTACT: PHOSPHOR BRONZE.
FRONT SHIELD: BRASS.
REAR SHIELD: SPCC.
GROUNDING STRIP: BRASS.
FINISH:
CONTACT: 0.762μm [30μ"] MIN. GOLD PLATING ON CONTACT AREA.
3.048μm [120μ"] MIN. BRIGHT TIN PLATING ON SOLDER TAILS,
WITH ENTIRE CONTACT UNDERPLATED 1.27μm [50μ"] MIN. NICKEL.
FRONT SHIELD: 0.762μm [30μ"] MIN. NICKEL PLATING.
0.762μm [30μ"] MIN. Cu UNDER PLATING OVERALL.
REAR SHIELD: 0.762μm [30μ"] MIN. NICKEL PLATING.
0.762μm [30μ"] MIN. Cu UNDER PLATING OVERALL.
GROUNDING STRIP: 0.762μm [30μ"] MIN. NICKEL PLATING.
0.762μm [30μ"] MIN. Cu UNDER PLATING OVERALL.
- REFLOW SOLDER CAPABLE TO 260°C PER TE SPEC 109-201, CONDITION B.

RECOMMEND P.C.B LAYOUT (THICKNESS 1.2~1.4mm)
(COMPONENT SIDE) TOLERANCE±0.05mm

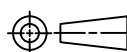
RECOMMEND P.C.B LAYOUT (THICKNESS 1.2~1.4mm)
(COMPONENT SIDE) TOLERANCE±0.05mm

OBSOLETE	TUBE	1-1734062-2
OBSOLETE	TAPE & REEL	1-1734062-1
NOTE	PACKAGE	PART NUMBER

THIS DRAWING IS A CONTROLLED DOCUMENT.

DIMENSIONS:

MM

TOLERANCES UNLESS
OTHERWISE SPECIFIED:

0 PLC	± 0.35
1 PLC	± 0.25
2 PLC	± 0.25
3 PLC	± 0.25
4 PLC	± 0.25
ANGLES	± 3°

MATERIAL

SEE NOTE

FINISH

SEE NOTE

DWN

CHK

APVD

PRODUCT SPEC

QUALIFICATION TEST REPORT

WEIGHT

4.71 GRAMS

CUSTOMER DRAWING



TE Connectivity

NAME

USB CONNECTOR, A SERIES,
STACKED, OFFSET TYPE

SIZE

CAGE CODE

DRAWING NO

RESTRICTED TO

A300779

C-1734062

SCALE

SHEET

2 of 24

REV G8

THIS DRAWING IS UNPUBLISHED.

RELEASED FOR PUBLICATION

©

COPYRIGHT

BY TYCO ELECTRONICS CORPORATION.

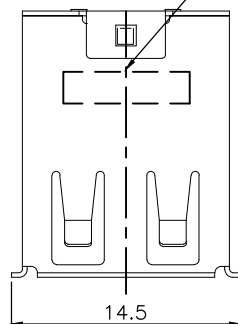
ALL RIGHTS RESERVED.

LOC
DW

DIST

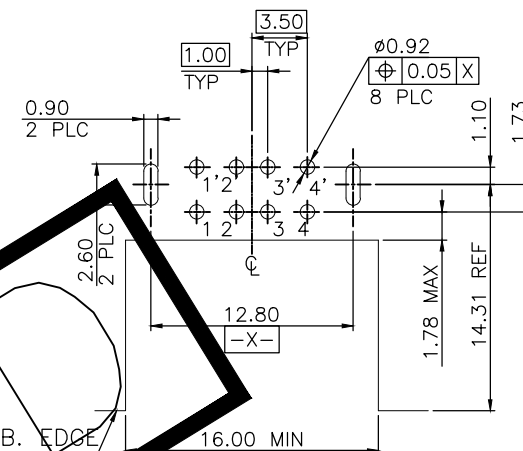
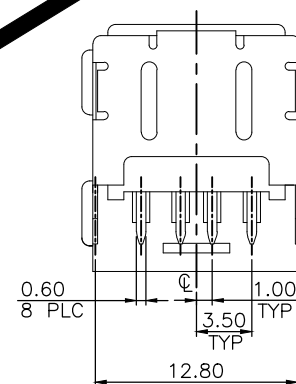
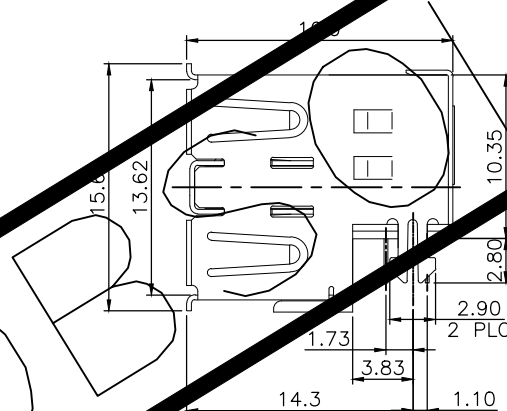
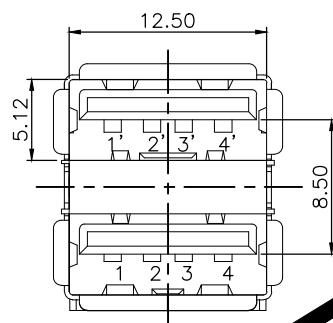
REVISIONS

P	LTR	DESCRIPTION	DATE	DWN	APVD
		SEE SHEET 1.			

LOGO &
DATE CODE

NOTE:

- MATERIAL:
HOUSING: PA9T WITH 30% GF, UL 94V-0 RATED, BLACK COLOR.
SPACER: PA9T WITH 30% GF, UL 94V-0 RATED, BLACK COLOR.
CONTACT: PHOSPHOR BRONZE.
FRONT SHIELD: BRASS.
REAR SHIELD: SPCC.
GROUNDING STRIP: BRASS.
- FINISH:
CONTACT: $0.76\mu\text{m}$ [30 μ] MIN. GOLD PLATING ON CONTACT AREA.
 $3.048\mu\text{m}$ [120 μ] MIN. BRIGHT TIN PLATING ON SOLDER TAIL,
WITH ENTIRE CONTACT UNDERPLATED $1.27\mu\text{m}$ [50 μ] MIN. NICKEL.
FRONT SHIELD: $0.76\mu\text{m}$ [30 μ] MIN. NICKEL PLATING.
 $0.76\mu\text{m}$ [30 μ] MIN. Cu UNDER PLATING OVERALL.
REAR SHIELD: $0.762\mu\text{m}$ [30 μ] MIN. NICKEL PLATING.
 $0.762\mu\text{m}$ [30 μ] MIN. Cu UNDER PLATING OVERALL.
GROUNDING STRIP: $0.762\mu\text{m}$ [30 μ] MIN. NICKEL PLATING.
 $0.762\mu\text{m}$ [30 μ] MIN. Cu UNDER PLATING OVERALL.
- REFLOW SOLDER CAPABLE TO 260°C PER TE
SPEC 109-201, CONDITION B.

RECOMMEND P.C.B LAYOUT (THICKNESS 1.2mm)
(COMPONENT SIDE) TOLERANCE $\pm 0.05\text{mm}$ 

OBSOLETE	TRAY	2-1734062-2
OBSOLETE	TUBE	2-1734062-1
	PACKAGE	PART NUMBER

THIS DRAWING IS A CONTROLLED DOCUMENT.

DIMENSIONS:	TOLERANCES UNLESS OTHERWISE SPECIFIED:
MM	
	0 PLC \pm
	1 PLC ± 0.35
	2 PLC ± 0.25
	3 PLC \pm
	4 PLC \pm
	ANGLES $\pm 3^\circ$
MATERIAL	FINISH
SEE NOTE	SEE NOTE

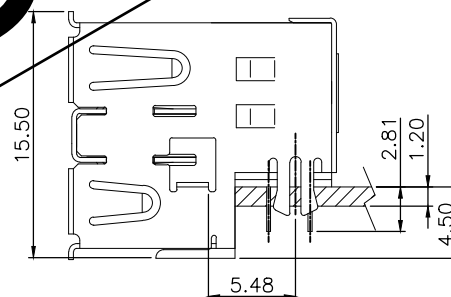
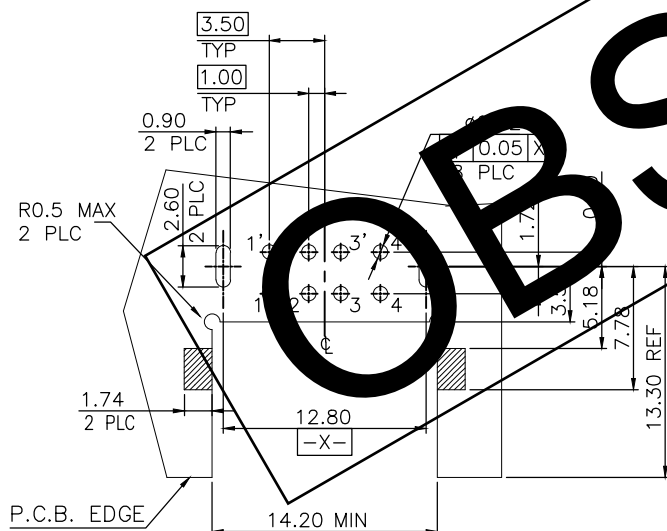
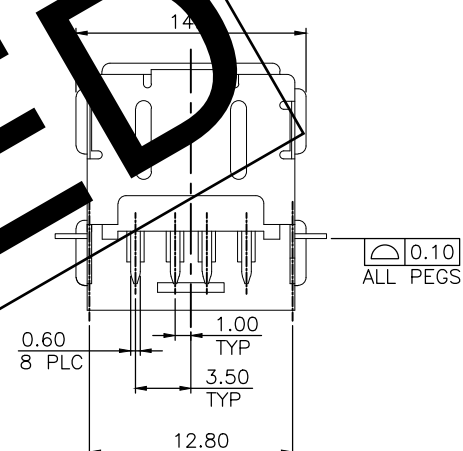
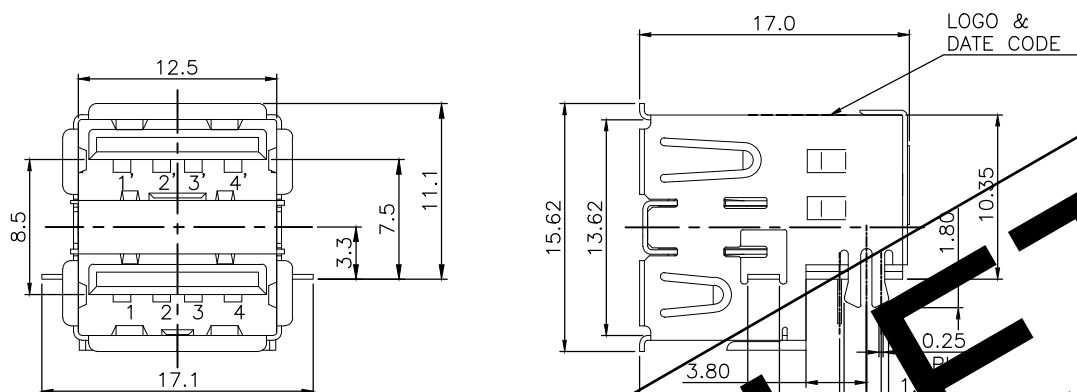
DWN	CHK	APVD	PRODUCT SPEC	QUALIFICATION TEST REPORT	WEIGHT	4.71 GRAMS	CUSTOMER DRAWING
-----	-----	------	--------------	---------------------------	--------	------------	------------------



TE Connectivity

NAME			
USB CONNECTOR, A SERIES, STACKED, OFFSET TYPE			
SIZE	CAGE CODE	DRAWING NO	RESTRICTED TO
A3	00779	C-1734062	
SCALE		SHEET	REV
		3 of 24	G8

LOC	DIST	REVISIONS					
DW	—	P	LTR	DESCRIPTION	DATE	DWN	APV
				SEE SHEET 1.			





RECOMMENDED MOUNT DIMENSION

- NOTES:
1. MATERIAL:
HOUSING: PA9T WITH 30% GF, UL 94V-0 RATED, BLACK COLOR.
SPACER: PA9T WITH 30% GF, UL 94V-0 RATED, BLACK COLOR.
CONTACT: PHOSPHOR BRONZE.
FRONT SHIELD: BRASS.
REAR SHIELD: SPCC.
GROUNDING STRIP: BRASS.
 2. FINISH:
CONTACT: $0.762\mu\text{m}$ [$30\mu''$] MIN. GOLD PLATING ON CONTACT AREA.
 $3.048\mu\text{m}$ [$120\mu''$] MIN. BRIGHT TIN PLATING ON SOLDER TAILS.
WITH ENTIRE CONTACT UNDERPLATED $1.27\mu\text{m}$ [$50\mu''$] MIN. NICKEL.
FRONT SHIELD: $0.762\mu\text{m}$ [$30\mu''$] MIN. NICKEL PLATING.
 $0.762\mu\text{m}$ [$30\mu''$] MIN. Cu UNDER PLATING OVERALL.
REAR SHIELD: $0.762\mu\text{m}$ [$30\mu''$] MIN. NICKEL PLATING.
 $0.762\mu\text{m}$ [$30\mu''$] MIN. Cu UNDER PLATING OVERALL.
GROUNDING STRIP: $0.762\mu\text{m}$ [$30\mu''$] MIN. NICKEL PLATING.
 $0.762\mu\text{m}$ [$30\mu''$] MIN. Cu UNDER PLATING OVERALL.
 3. REFLOW SOLDER CAPABLE TO 260°C PER TE SPEC 109-201, CONDITION B.

OBSOLETE	TUBE	4-1734062-1
	PACKAGE	PART NUMBER

RECOMMEND P.C.B LAYOUT (THICKNESS 1.0~1.4mm)
(COMPONENT SIDE) TOLERANCE±0.05mm

THIS DRAWING IS A CONTROLLED DOCUMENT.		DWN		 TE Connectivity	
		CHK			
DIMENSIONS:		TOLERANCES UNLESS OTHERWISE SPECIFIED:		NAME USB CONNECTOR, A SERIES, STACKED, OFFSET TYPE	
MM		APVD			
		PRODUCT SPEC			
		QUALIFICATION TEST REPORT			
		0 PLC ± — 1 PLC ± 0.35 2 PLC ± 0.25 3 PLC ± — 4 PLC ± — ANGLES ± 3°		SIZE CAGE CODE DRAWING NO	
MATERIAL		FINISH		RESTRICTED TO	
SEE NOTE		SEE NOTE		—	
CUSTOMER DRAWING				SCALE	
				SHEET 5 of 24 REV G8	

4

3

2

1

THIS DRAWING IS UNPUBLISHED.

RELEASED FOR PUBLICATION

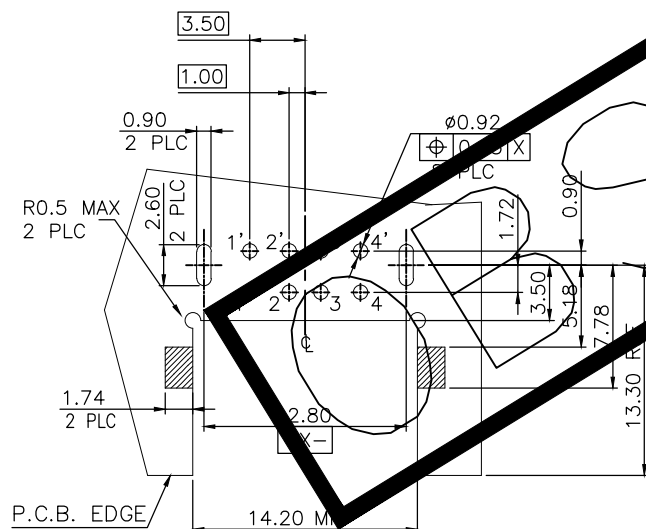
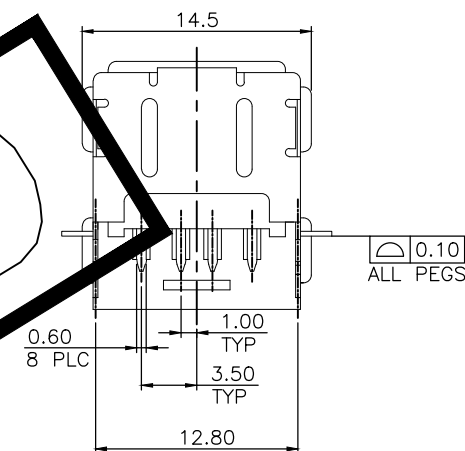
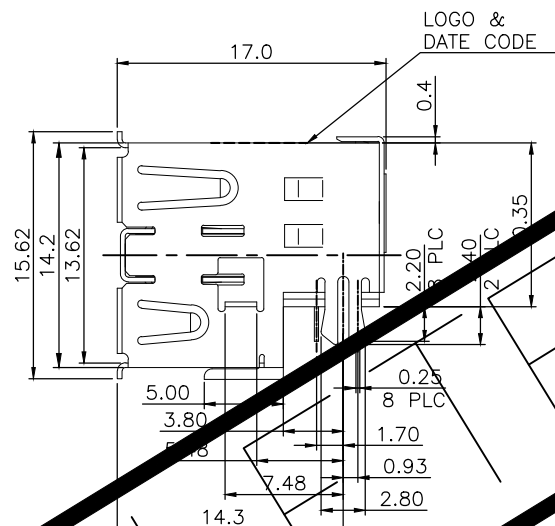
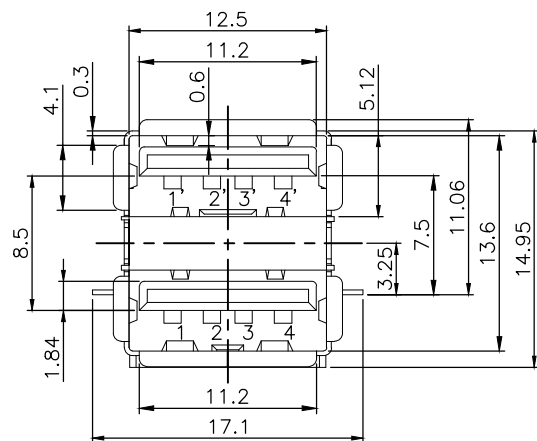
© COPYRIGHT BY TYCO ELECTRONICS CORPORATION. ALL RIGHTS RESERVED.

LOC
DW

DIST

REVISIONS

P	LTR	DESCRIPTION	DATE	DWN	APVD
		SEE SHEET 1.			



NOTES:

- MATERIAL:
HOUSING: PA9T WITH 30% GF, UL 94V-0 RATED, BLACK COLOR.
SPACER: PA9T WITH 30% GF, UL 94V-0 RATED, BLACK COLOR.
CONTACT: PHOSPHOR BRONZE.
FRONT SHIELD: SUS.
REAR SHIELD: SPCC.
GROUNDING STRIP: SUS.
- FINISH:
CONTACT: 0.762μm [30μ"] MIN. GOLD PLATING ON CONTACT AREA.
3.048μm [120μ"] MIN. BRIGHT TIN PLATING ON SOLDER TAILS.
WITH ENTIRE CONTACT UNDERPLATED 1.27μm [50μ"] MIN. NICKEL.
FRONT SHIELD: 0.762μm [30μ"] MIN. NICKEL PLATING OVERALL.
REAR SHIELD: 0.762μm [30μ"] MIN. NICKEL PLATING.
0.762μm [30μ"] MIN. Cu UNDER PLATING OVERALL.
- REFLOW SOLDER CAPABLE TO 260°C PER TE SPEC 109-201, CONDITION B.

RECOMMENDED MOUNT DIMENSION

RECOMMEND P.C.B LAYOUT (THICKNESS 1.6mm)
(COMPONENT SIDE) TOLERANCE ±0.05mm

OBsolete	TAPE & REEL	4-1734062-2
	PACKAGE	PART NUMBER

THIS DRAWING IS A CONTROLLED DOCUMENT.

DIMENSIONS: MM	TOLERANCES UNLESS OTHERWISE SPECIFIED:
0 PLC	±
1 PLC	±0.35
2 PLC	±0.25
3 PLC	±
4 PLC	±
ANGLES	±3°
MATERIAL	FINISH
SEE NOTE	SEE NOTE

DWN	CHK	APVD	PRODUCT SPEC	QUALIFICATION TEST REPORT	WEIGHT	4.71 GRAMS	CUSTOMER DRAWING
NAME				SIZE	CAGE CODE	DRAWING NO	RESTRICTED TO
TE Connectivity				A3	00779	C-1734062	
USB CONNECTOR, A SERIES, STACKED, OFFSET TYPE				SCALE	SHEET	6 of 24	REV G8

THIS DRAWING IS UNPUBLISHED.

RELEASED FOR PUBLICATION

© COPYRIGHT BY TYCO ELECTRONICS CORPORATION.

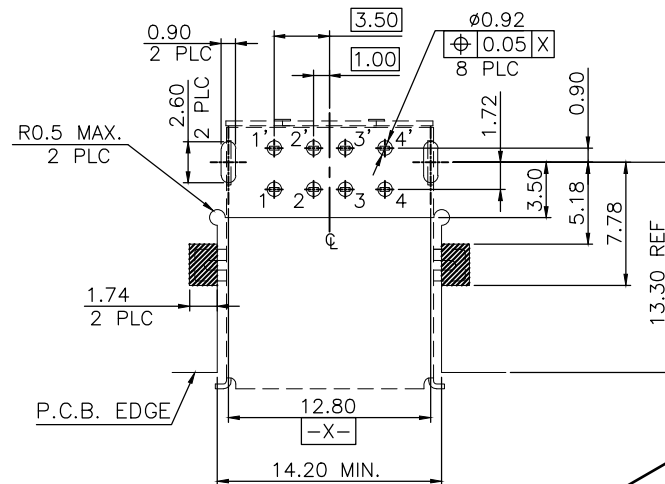
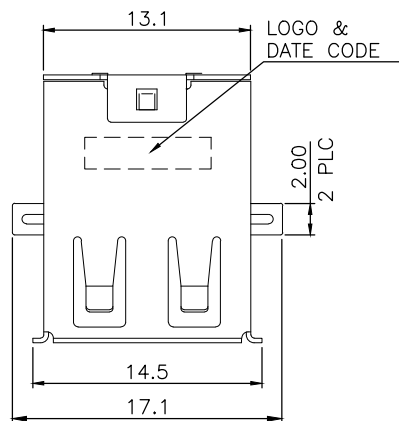
ALL RIGHTS RESERVED.

LOC
DW

DIST

REVISIONS

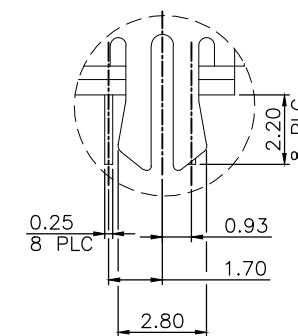
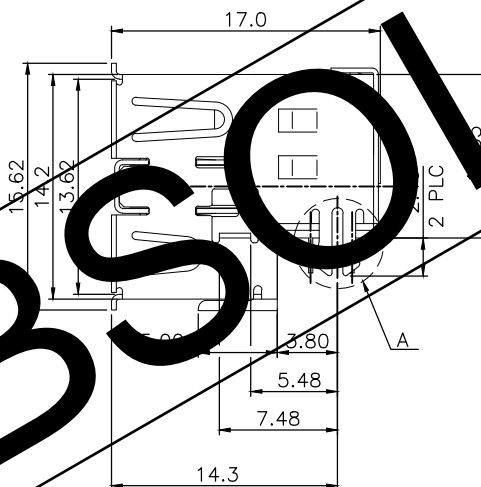
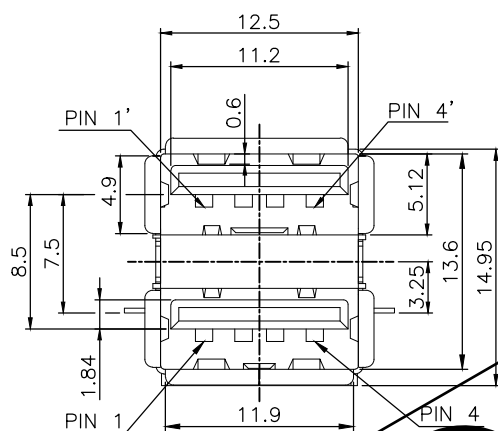
P	LTR	DESCRIPTION	DATE	DWN	APVD
		SEE SHEET 1.			



NOTES:

- MATERIAL:
HOUSING: PA9T WITH 30% GF, UL 94V-0 RATED, BLACK COLOR.
SPACER: PA9T WITH 30% GF, UL 94V-0 RATED, BLACK COLOR.
CONTACT: PHOSPHOR BRONZE.
FRONT SHIELD: SUS.
REAR SHIELD: SPCC.
GROUNDING STRIP: SUS.
- FINISH:
CONTACT: 0.762μm [30μ"] MIN. GOLD PLATING ON CONTACT AREA,
2.540μm [100μ"] MIN. BRIGHT NICKEL PLATING ON SOLDER TAILS,
WITH ENAMEL COATING UNDERPLATED 1.27μm [50μ"] MIN. NICKEL.
FRONT SHIELD: 0.762μm [30μ"] MIN. NICKEL PLATING OVERALL.
REAR SHIELD: 0.762μm [30μ"] MIN. NICKEL PLATING OVERALL.
GROUNDING STRIP: 0.762μm [30μ"] MIN. CHROMIUM PLATING OVERALL.
- REFLOW SOLDER: CAN BE TO 260°C MAX. PER EIA SPEC 109-201, CONDITION B.

RECOMMEND P.C.B LAYOUT (THICKNESS 1.6mm)
(COMPONENT SIDE) TOLERANCE ±0.05mm



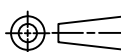
DETAIL A
SCALE 2:1

TAPE & REEL	4-1734062-3
PACKAGE	PART NUMBER

THIS DRAWING IS A CONTROLLED DOCUMENT.

DIMENSIONS:

MM



TOLERANCES UNLESS OTHERWISE SPECIFIED:

0 PLC	±
1 PLC	± 0.35
2 PLC	± 0.25
3 PLC	±
4 PLC	±
ANGLES	± 3°

MATERIAL

SEE NOTE

FINISH

SEE NOTE

DWN

CHK

APVD

PRODUCT SPEC

QUALIFICATION TEST REPORT

WEIGHT 4.25 GRAMS

CUSTOMER DRAWING



TE Connectivity

NAME

USB CONNECTOR, A SERIES,
STACKED, OFFSET TYPE

SIZE

CAGE CODE

DRAWING NO

RESTRICTED TO

A300779

C-1734062

SCALE

SHEET

7 of 24

REV G8

RECOMMENDED MOUNT DIMENSION

4

3

2

1

THIS DRAWING IS UNPUBLISHED.

RELEASED FOR PUBLICATION

©

COPYRIGHT

BY TYCO ELECTRONICS CORPORATION.

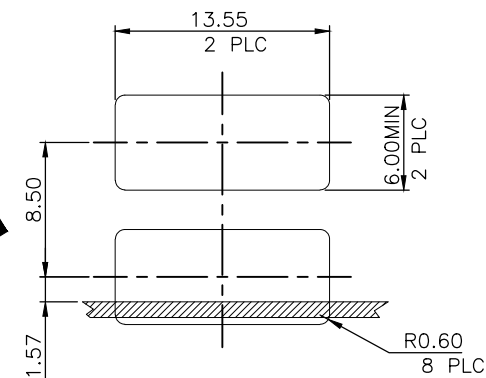
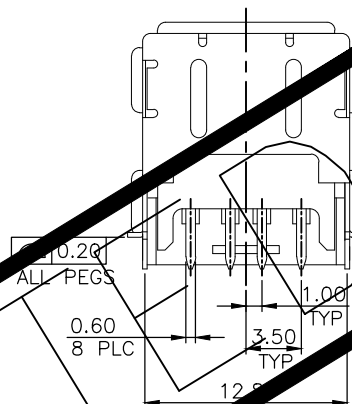
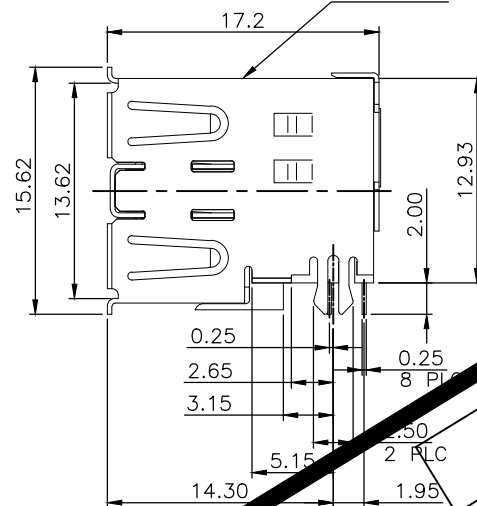
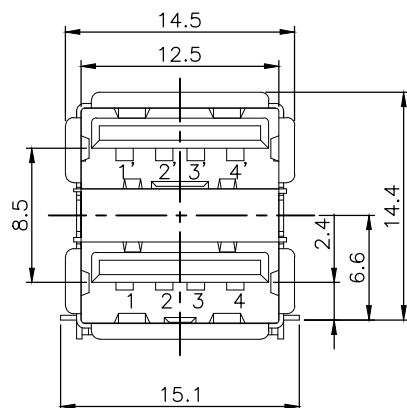
ALL RIGHTS RESERVED.

LOC
DW

DIST

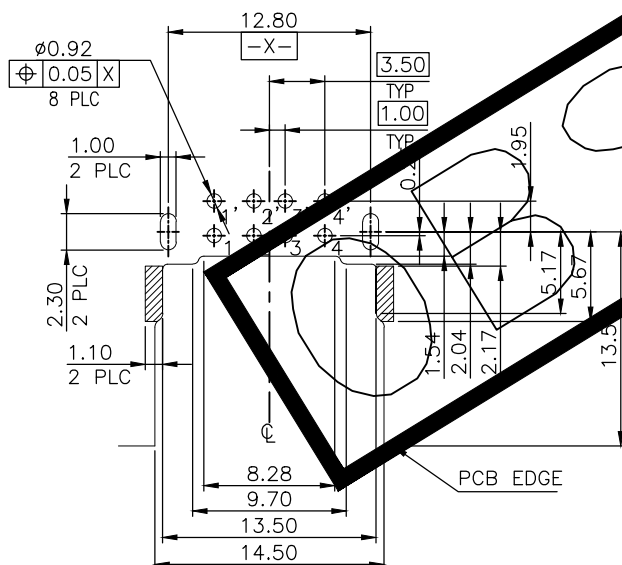
REVISIONS

P	LTR	DESCRIPTION	DATE	DWN	APVD
		SEE SHEET 1.			

LOGO &
DATE CODEMOUNTING PANEL CUTOUT
(INTERNAL SIDE)

NOTES:

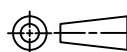
1. MATERIAL:
HOUSING: A9T WITH 30% GF, UL 94V-0 RATED, BLACK COLOR.
SPACER: A9T WITH 30% GF, UL 94V-0 RATED, BLACK COLOR.
CONTACT: PHOSPHOR BRONZE.
FRONT SHIELD: BRASS.
REAR SHIELD: SPCC.
GROUNDING STRIP: BRASS.
2. FINISH:
CONTACT: 0.762μm [30μ"] MIN. GOLD PLATING ON CONTACT AREA.
3.048μm [120μ"] MIN. BRIGHT-TIN PLATING ON SOLDER TAILS.
WITH ENTIRE CONTACT UNDERPLATED 1.27μm [50μ"] MIN. NICKEL.
FRONT SHIELD: 0.762μm [30μ"] MIN. NICKEL PLATING.
0.762μm [30μ"] MIN. Cu UNDER PLATING OVERALL.
REAR SHIELD: 0.762μm [30μ"] MIN. NICKEL PLATING.
0.762μm [30μ"] MIN. Cu UNDER PLATING OVERALL.
GROUNDING STRIP: 0.762μm [30μ"] MIN. NICKEL PLATING.
0.762μm [30μ"] MIN. Cu UNDER PLATING OVERALL.
3. REFLOW SOLDER CAPABLE TO 260°C PER TE SPEC 109-201, CONDITION B.

RECOMMEND P.C.B LAYOUT (THICKNESS 1.0mm)
(COMPONENT SIDE) TOLERANCE ±0.05mm

THIS DRAWING IS A CONTROLLED DOCUMENT.

DIMENSIONS:

MM

TOLERANCES UNLESS
OTHERWISE SPECIFIED:

0 PLC	±
1 PLC	± 0.35
2 PLC	± 0.25
3 PLC	±
4 PLC	±
ANGLES	± 3°

MATERIAL

SEE NOTE

FINISH

SEE NOTE

DWN

CHK

APVD

PRODUCT SPEC

QUALIFICATION TEST REPORT

WEIGHT

4.71 GRAMS

CUSTOMER DRAWING



TE Connectivity

NAME

USB CONNECTOR, A SERIES,
STACKED, OFFSET TYPE

SIZE

CAGE CODE

DRAWING NO

RESTRICTED TO

A3 00779

C-1734062

SCALE

SHEET

8 OF 24

REV G8

THIS DRAWING IS UNPUBLISHED.

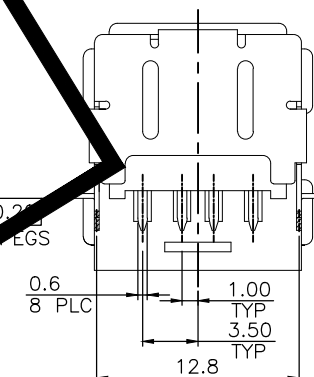
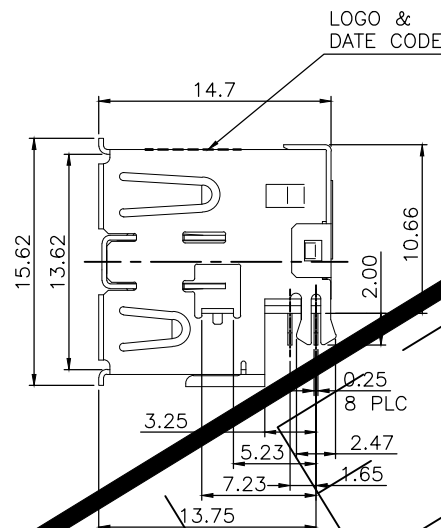
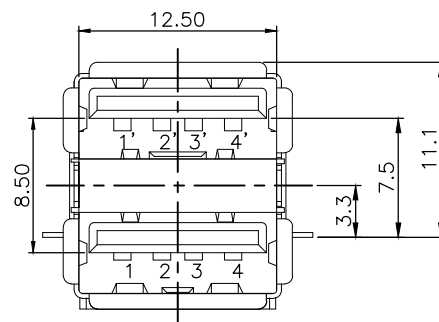
RELEASED FOR PUBLICATION

© COPYRIGHT BY TYCO ELECTRONICS CORPORATION. ALL RIGHTS RESERVED.

LOC
DWDIST
—

REVISIONS

P	LTR	DESCRIPTION	DATE	DWN	APVD
		SEE SHEET 1.			



NOTES:

1. MATERIALS:

HOUSING: PA9T WITH 30% GF, UL 94V-0 RATED, BLACK COLOR.

SPACER: PA9T WITH 30% GF, UL 94V-0 RATED, BLACK COLOR.

CONTACT: PHOSPHOR BRONZE.

FRONT SHELL: BRASS.

REAR SHELL: SPCC.

GROUNDING STRIP: STAINLESS.

2. FINISH:

CONTACT: 0.762μm [30μ"] MIN. GOLD PLATING ON CONTACT AREA.

3.048μm [120μ"] MIN. BRIGHT TIN PLATING ON SOLDER TAILS,

WITH ENTIRE CONTACT UNDERPLATED 1.27μm [50μ"] MIN. NICKEL.

FRONT SHELL: 0.762μm [30μ"] MIN. NICKEL PLATED.

0.762μm [30μ"] MIN. Cu UNDERPLATING OVERALL.

REAR SHELL: 0.762μm [30μ"] MIN. NICKEL PLATED.

0.762μm [30μ"] MIN. Cu UNDERPLATING OVERALL.

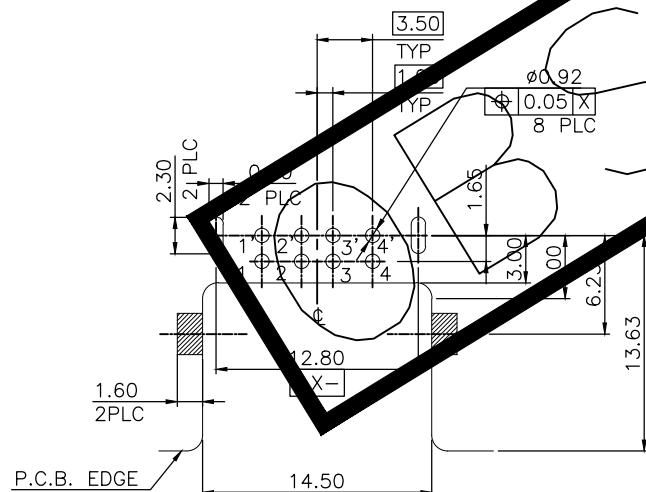
GROUNDING SHELL: 0.762μm [30μ"] MIN. NICKEL PLATED.

0.762μm [30μ"] MIN. Cu UNDERPLATING OVERALL.

3. REFLOW SOLDER CAPABLE TO 260°C PER TE

SPEC 109-201, CONDITION B.

OBSOLETE	TAPE & REEL	6-1734062-1
	PACKAGE	PART NUMBER

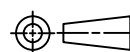


RECOMMEND P.C.B LAYOUT (THICKNESS 1.2mm)
(COMPONENT SIDE) TOLERANCE ±0.05mm

THIS DRAWING IS A CONTROLLED DOCUMENT.

DIMENSIONS:

MM



TOLERANCES UNLESS OTHERWISE SPECIFIED:

0 PLC	±
1 PLC	± 0.35
2 PLC	± 0.25
3 PLC	±
4 PLC	±
ANGLES	± 3°

MATERIAL

SEE NOTE

FINISH

SEE NOTE

DWN

CHK

APVD

PRODUCT SPEC

QUALIFICATION TEST REPORT

WEIGHT 4.71 GRAMS

CUSTOMER DRAWING



TE Connectivity

NAME

USB CONNECTOR, A SERIES,
STACKED, OFFSET TYPE

SIZE

CAGE CODE

DRAWING NO

RESTRICTED TO

A300779

C-1734062

SCALE

SHEET

9 of 24

REV G8

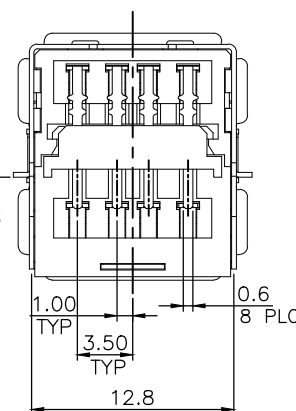
—, —

SEE SHEET 1.

A

— — —

P	LTR	DESCRIPTION	DATE	DWN	APV
		SEE SHEET 1.			



OBSOLETE	TAPE & REEL	8-1734062-1
	PACKAGE	PART NUMBER

THIS DRAWING IS A CONTROLLED DOCUMENT.

CUSTOMER DRAWING

MATERIAL	SEE NOTE
----------	----------

SEE NOTE

TE Connectivity

USB CONNECTOR, A SERIES,
STACKED, OFFSET TYPE

9(C)-1734062

RESTRICTED TO

CUSTOMER DRAWING

SCALE

SHEET

11 OF 24

REV G8

THIS DRAWING IS UNPUBLISHED.

RELEASED FOR PUBLICATION

— . — .

© COPYRIGHT — BY TYCO ELECTRONICS CORPORATION. ALL RIGHTS RESERVED.

LOC
DW

DIST
—

REVISIONS

P	LTR	DESCRIPTION	DATE	DWN	APVD
		SEE SHEET 1.			

POLYLONE

BOX

LABEL

USB

18.1

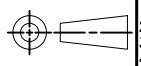
455

LABEL


18.1

TUBE

THIS DRAWING IS A CONTROLLED DOCUMENT.

DIMENSIONS: MM	TOLERANCES UNLESS OTHERWISE SPECIFIED:
	0 PLC ± — 1 PLC ± — 2 PLC ± — 3 PLC ± — 4 PLC ± — ANGLES ± — FINISH —
MATERIAL —	—

DWN	—
CHK	—
APVD	—
PRODUCT SPEC	—
APPLICATION SPEC	—
WEIGHT	—
CUSTOMER DRAWING	—

 TE Connectivity			
NAME USB CONNECTOR, A SERIES, STACKED, OFFSET TYPE			
SIZE A3	CAGE CODE 00779	DRAWING NO C=1734062	RESTRICTED TO —
SCALE —		SHEET 13 OF 24	REV G8

24	40	960	6.10	4.52	3-1734062-2 1-1734062-2 1734062-2
PCS/ TUBE	TUBS INNER BOX	QUANTITY (PCS)	G/W (Kg)	N/W (Kg)	PART NUMBER

4

3

2

1

THIS DRAWING IS UNPUBLISHED.

RELEASED FOR PUBLICATION

© COPYRIGHT BY TYCO ELECTRONICS CORPORATION. ALL RIGHTS RESERVED.

LOC

DIST

REVISIONS

P

LTR

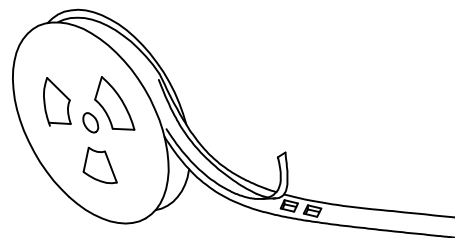
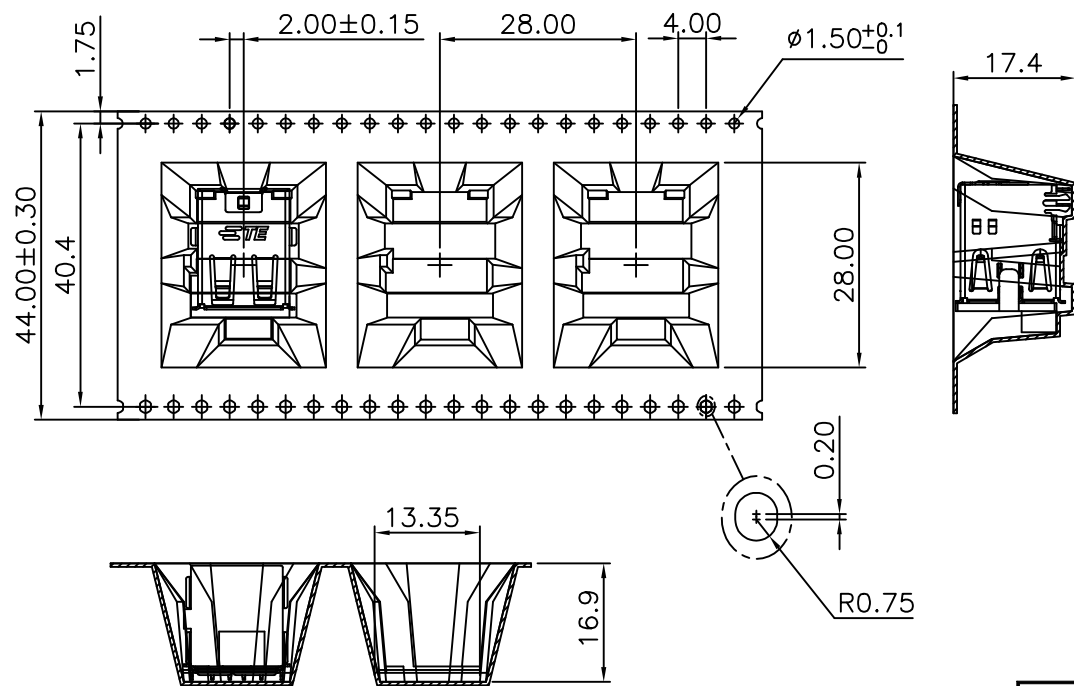
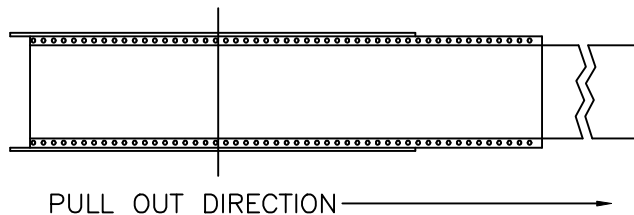
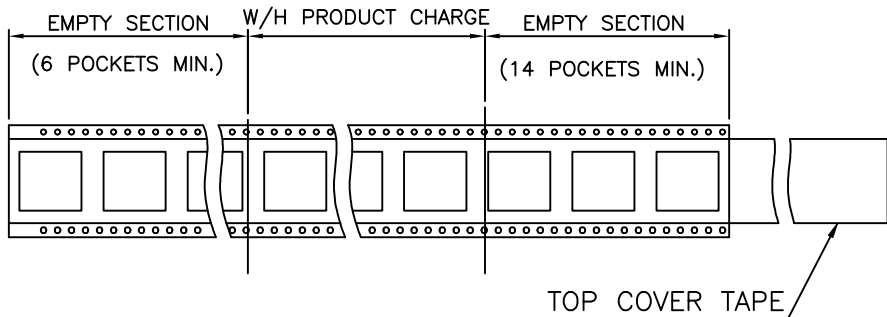
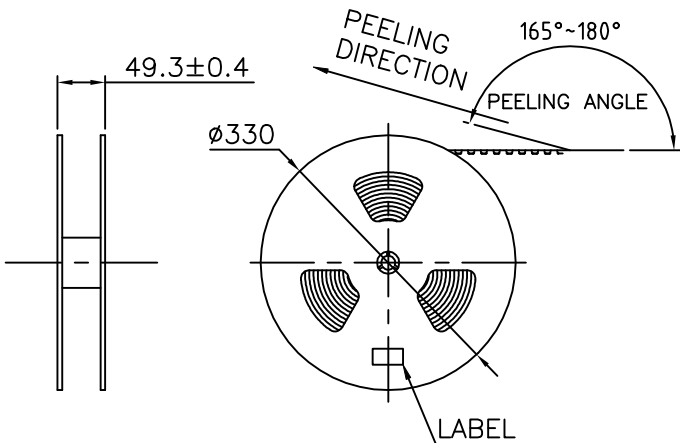
DESCRIPTION

DATE

DWN

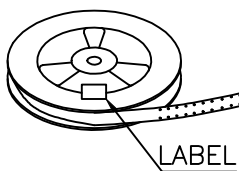
APVD

SEE SHEET 1.



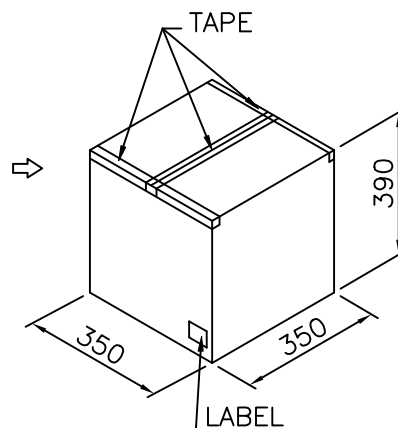
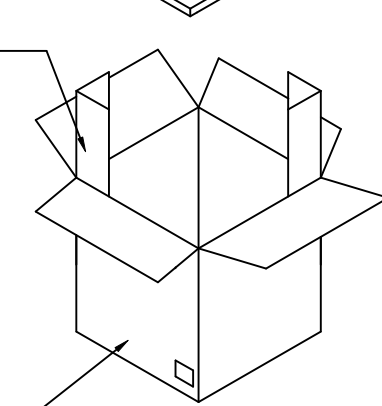
FOLDER PAPER BOARD

STYROFOAM G8



LABEL

SHIPPING BOX



100	7	700	7.28	3.30	1734062-3
PCS/REEL	REELS/BOX	QUANTITY (PCS)	G/W (Kg)	N/W (Kg)	PART NUMBER

THIS DRAWING IS A CONTROLLED DOCUMENT.

DWN

CHK

APVD

PRODUCT SPEC

APPLICATION SPEC

WEIGHT

CUSTOMER DRAWING



TE Connectivity

NAME

USB CONNECTOR, A SERIES,
STACKED, OFFSET TYPE

SIZE

CAGE CODE

DRAWING NO

RESTRICTED TO

A300779C=1734062

SCALE

SHEET

14 of 24

REV

G8

4

3

2

1

THIS DRAWING IS UNPUBLISHED.

RELEASED FOR PUBLICATION

©

COPYRIGHT

BY TYCO ELECTRONICS CORPORATION.

ALL RIGHTS RESERVED.

LOC
DW

DIST

REVISIONS

P

LTR

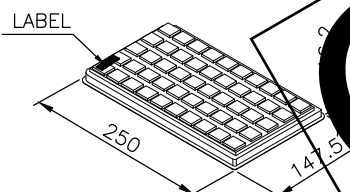
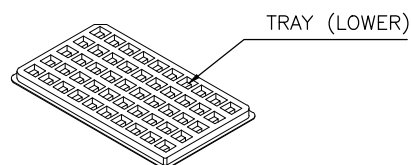
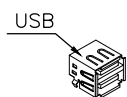
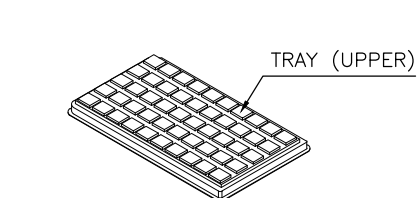
DESCRIPTION

DATE

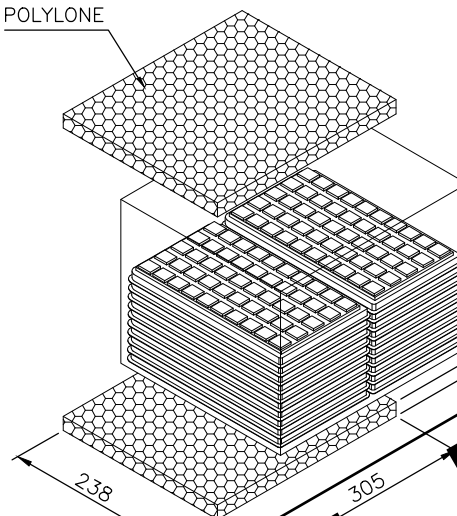
DWN

APVD

SEE SHEET 1.



POLYLONE



TAPE

BOX

315

270

200

LABEL

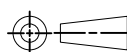
OBSOLETE

50	20	1000	6.82	4.71	2-1734062-2
PCS/ TRAY	TRAY/ BOX	QUANTITY (PCS)	G/W (Kg)	N/W (Kg)	PART NUMBER

THIS DRAWING IS A CONTROLLED DOCUMENT.

DIMENSIONS:

MM

TOLERANCES UNLESS
OTHERWISE SPECIFIED:

0 PLC	± -
1 PLC	± -
2 PLC	± -
3 PLC	± -
4 PLC	± -
ANGLES	± -

MATERIAL

FINISH

DWN

CHK

APVD

PRODUCT SPEC

APPLICATION SPEC

WEIGHT

CUSTOMER DRAWING

TE

TE Connectivity

NAME

USB CONNECTOR, A SERIES,
STACKED, OFFSET TYPE

SIZE

CAGE CODE

DRAWING NO

RESTRICTED TO

A300779

C-1734062

SCALE

SHEET

15 of 24

REV G8

THIS DRAWING IS UNPUBLISHED.

RELEASED FOR PUBLICATION

©

COPYRIGHT

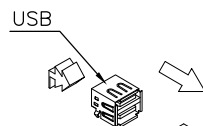
BY TYCO ELECTRONICS CORPORATION.

ALL RIGHTS RESERVED.

LOC
DWDIST
—

REVISIONS

P	LTR	DESCRIPTION	DATE	DWN	APVD
		SEE SHEET 1.			

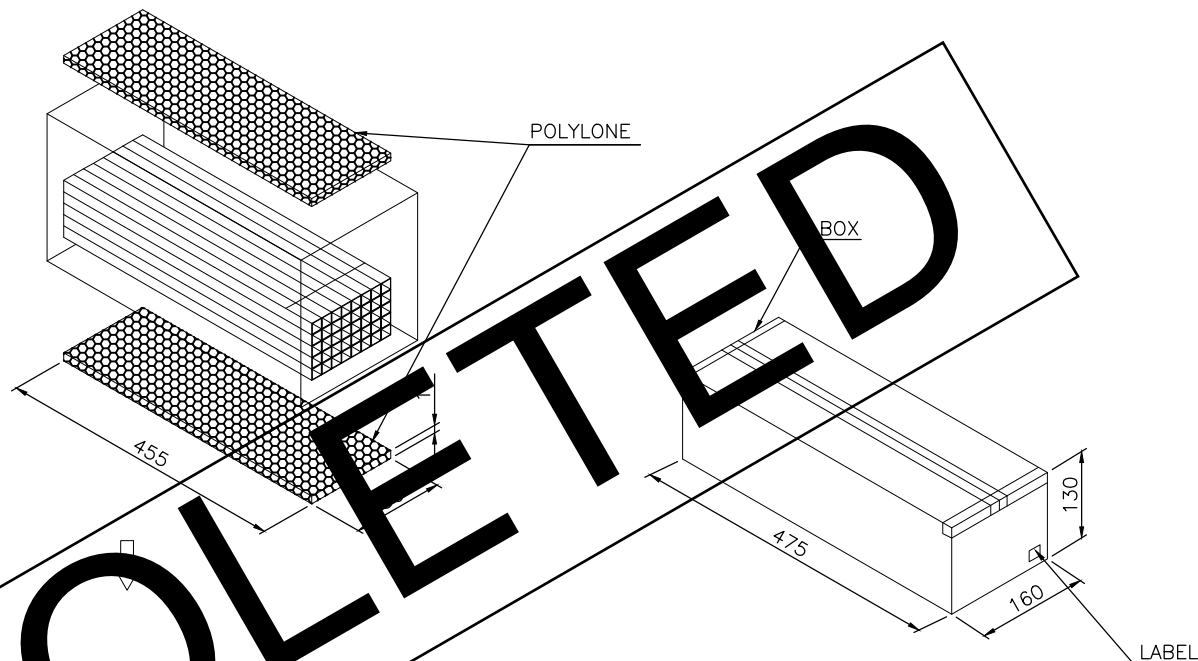


17.7

LABEL

TUBE

19.1



POLYHONEY

BOX

LABEL

25	40	1000	6.27	4.71	4-1734062-1	OBSOLETE
PCS/ TUBE	TUBS INNER BOX	QUANTITY (PCS)	G/W (Kg)	N/W (Kg)	2-1734062-1	
					PART NUMBER	

THIS DRAWING IS A CONTROLLED DOCUMENT.

DIMENSIONS: MM	TOLERANCES UNLESS OTHERWISE SPECIFIED:
	0 PLC ± —
	1 PLC ± —
	2 PLC ± —
	3 PLC ± —
	4 PLC ± —
	ANGLES ± —
MATERIAL	FINISH

DWN	TE Connectivity				
CHK					
APVD	NAME				
PRODUCT SPEC	USB CONNECTOR, A SERIES, STACKED, OFFSET TYPE				
APPLICATION SPEC					
WEIGHT	SIZE	CAGE CODE	DRAWING NO	RESTRICTED TO	
—	A3	00779	C-1734062	—	
CUSTOMER DRAWING			SCALE	SHEET	REV
			—	16 of 24	G8

THIS DRAWING IS UNPUBLISHED.

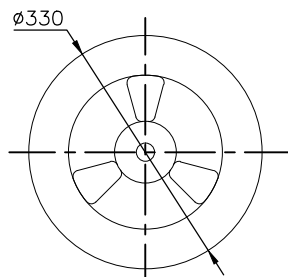
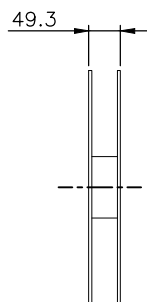
RELEASED FOR PUBLICATION

© COPYRIGHT BY TYCO ELECTRONICS CORPORATION. ALL RIGHTS RESERVED.

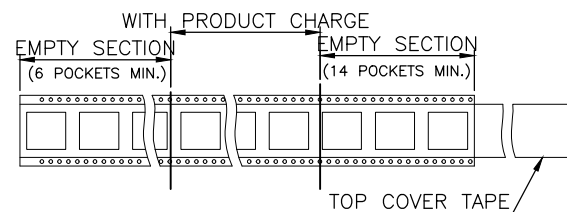
LOC
DWDIST
—

REVISIONS

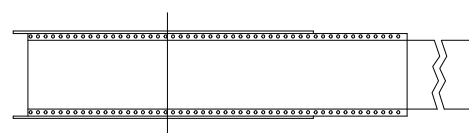
P	LTR	DESCRIPTION	DATE	DWN	APVD
		SEE SHEET 1.			



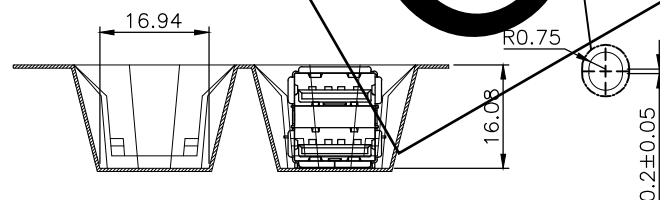
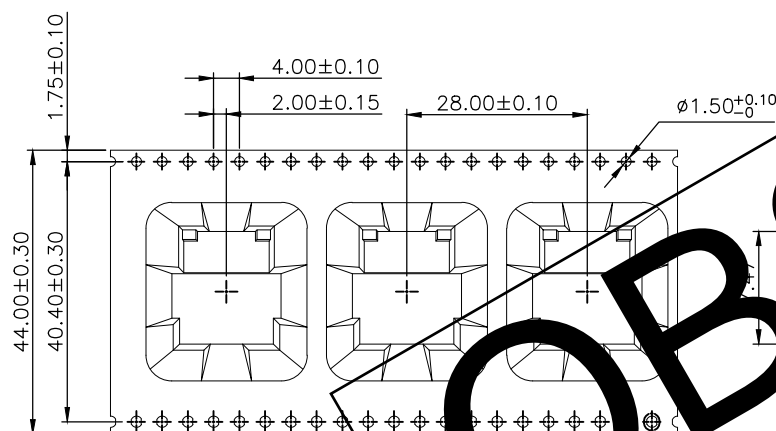
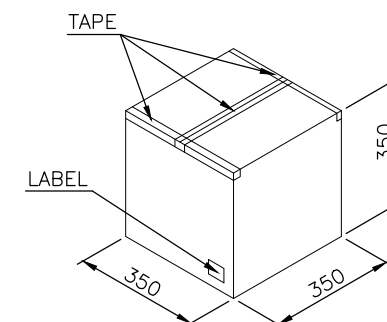
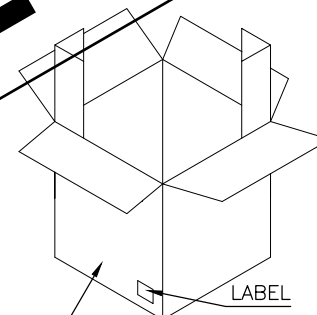
PULL OUT DIRECTION



TOP COVER TAPE



PULL OUT DIRECTION

SHIPPING BOX
7 REELS / SHIPPING BOX

120	7	840	9.05	3.96	3-1734062-4
					3-1734062-3
PCS/ REEL	REELS/ BOX	QUANTITY (PCS)	G/W (Kg)	N/W (Kg)	PART NUMBER

THIS DRAWING IS A CONTROLLED DOCUMENT.

DIMENSIONS: MM	TOLERANCES UNLESS OTHERWISE SPECIFIED
0 PLC	±
1 PLC	±
2 PLC	±
3 PLC	±
4 PLC	±
ANGLES	±
MATERIAL	FINISH

DWN
CHK
APVD
PRODUCT SPEC
APPLICATION SPEC
WEIGHT
CUSTOMER DRAWING



TE Connectivity

NAME			
USB CONNECTOR, A SERIES, STACKED, OFFSET TYPE			
SIZE	CAGE CODE	DRAWING NO	RESTRICTED TO
A3	00779	C-1734062	
SCALE		SHEET	REV
—		17 of 24	G8

THIS DRAWING IS UNPUBLISHED.

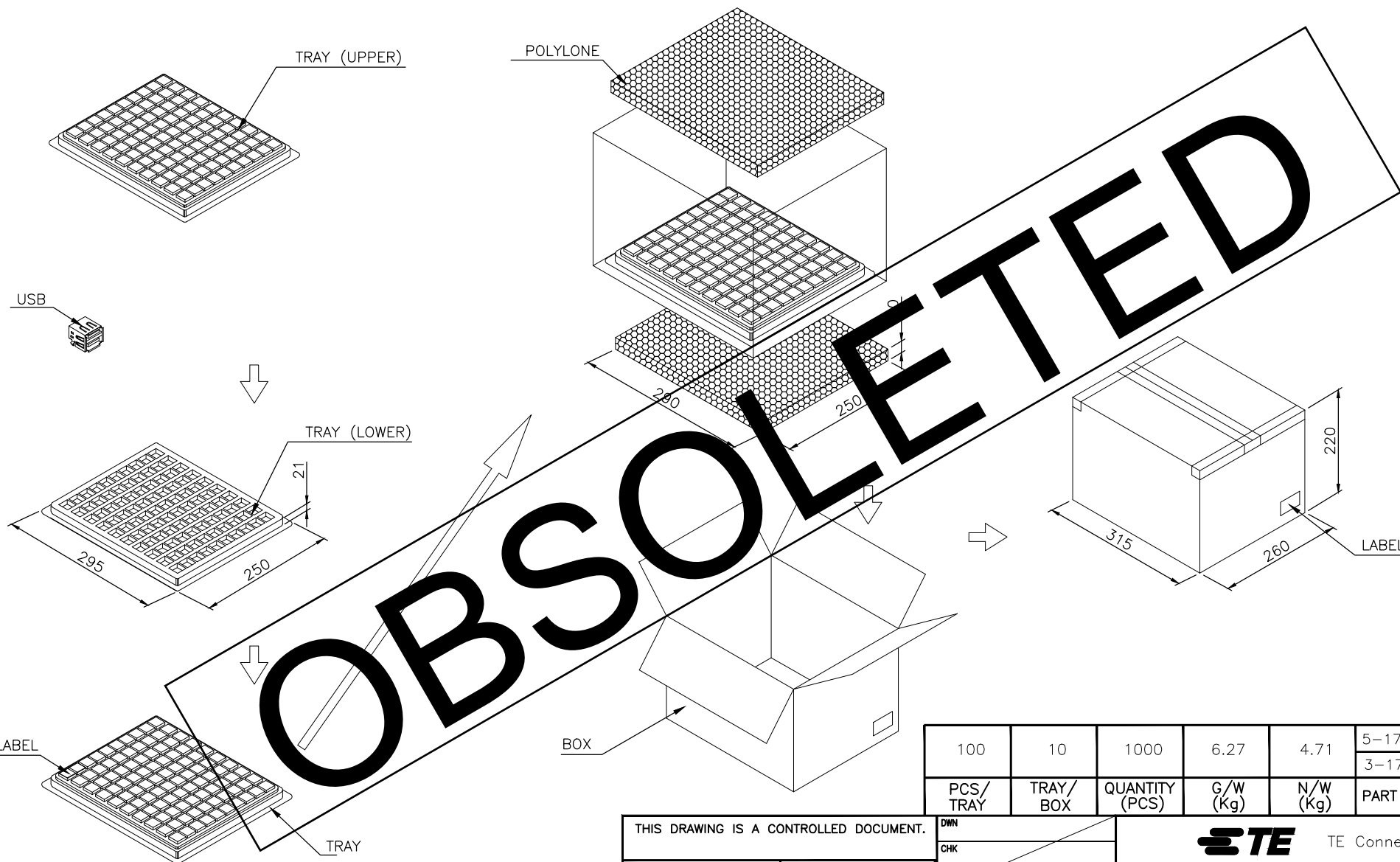
RELEASED FOR PUBLICATION

© COPYRIGHT BY TYCO ELECTRONICS CORPORATION. ALL RIGHTS RESERVED.

LOC
DWDIST
—

REVISIONS

P	LTR	DESCRIPTION	DATE	DWN	APVD
		SEE SHEET 1.			



100	10	1000	6.27	4.71	5-1734062-2	OBSOLETE
PCS/ TRAY	TRAY/ BOX	QUANTITY (PCS)	G/W (Kg)	N/W (Kg)	3-1734062-1	
					PART NUMBER	

THIS DRAWING IS A CONTROLLED DOCUMENT.

DIMENSIONS: MM	TOLERANCES UNLESS OTHERWISE SPECIFIED:
	0 PLC ± —
	1 PLC ± —
	2 PLC ± —
	3 PLC ± —
	4 PLC ± —
	ANGLES ± —
MATERIAL	FINISH

DWN	TE Connectivity				
CHK					
APVD	NAME				
PRODUCT SPEC	USB CONNECTOR, A SERIES, STACKED, OFFSET TYPE				
APPLICATION SPEC					
WEIGHT	SIZE	CAGE CODE	DRAWING NO	RESTRICTED TO	
	A3	00779	C-1734062		
CUSTOMER DRAWING			SCALE	SHEET	REV
				18 of 24	G8

4

3

2

1

THIS DRAWING IS UNPUBLISHED.

RELEASED FOR PUBLICATION

© COPYRIGHT BY TYCO ELECTRONICS CORPORATION. ALL RIGHTS RESERVED.

LOC
DW

DIST

REVISIONS

P

LTR

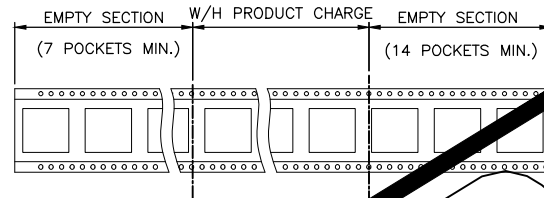
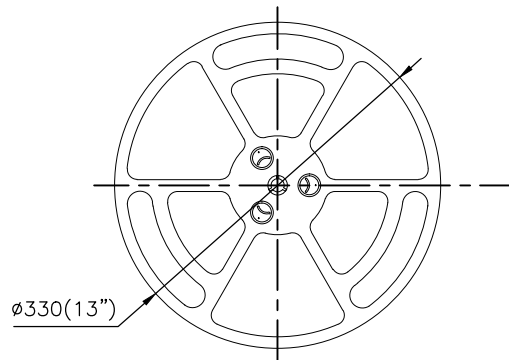
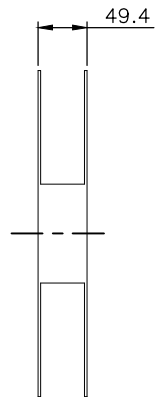
DESCRIPTION

DATE

DWN

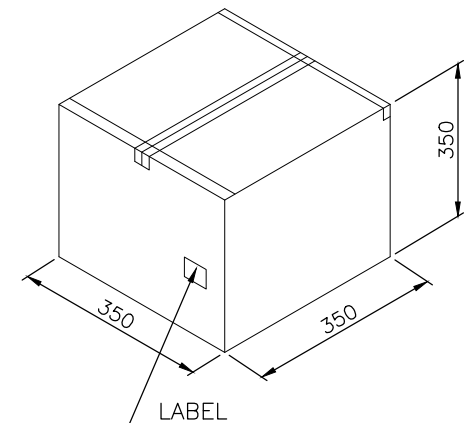
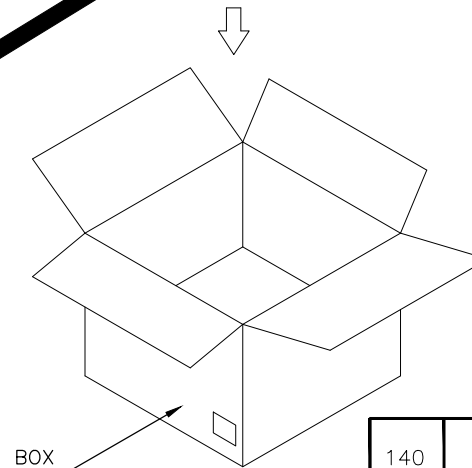
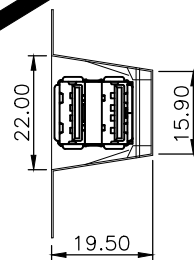
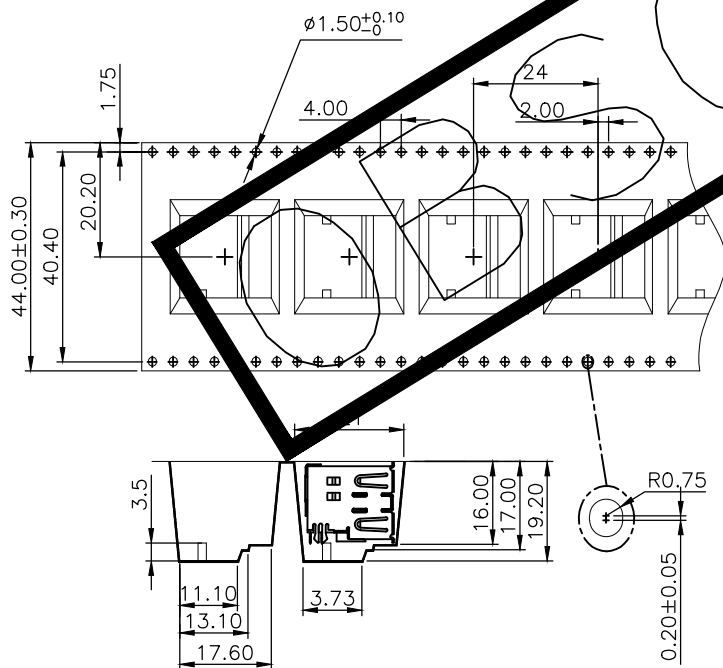
APVD

SEE SHEET 1.



PULL OUT DIRECTION

TOP COVER TAPE

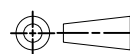


140	7	980	8.60	4.62	5-1734062-1	OBSOLETE
PCS/REEL	REELS/BOX	QUANTITY (PCS)	G/W (Kg)	N/W (Kg)	PART NUMBER	

THIS DRAWING IS A CONTROLLED DOCUMENT.

DIMENSIONS:

MM



TOLERANCES UNLESS OTHERWISE SPECIFIED:

0 PLC ±
1 PLC ±
2 PLC ±
3 PLC ±
4 PLC ±

ANGLES ±

FINISH

MATERIAL

DWN

CHK

APVD

PRODUCT SPEC

APPLICATION SPEC

WEIGHT

—

CUSTOMER DRAWING

TE

TE Connectivity

NAME

USB CONNECTOR, A SERIES,
STACKED, OFFSET TYPE

SIZE

CAGE CODE

DRAWING NO

RESTRICTED TO

A300779

C-1734062

SCALE

SHEET

19 of 24

REV G8

4

3

2

1

THIS DRAWING IS UNPUBLISHED.

RELEASED FOR PUBLICATION

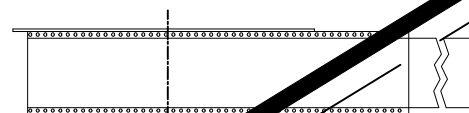
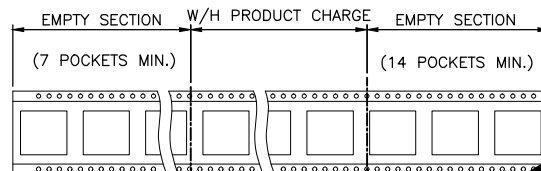
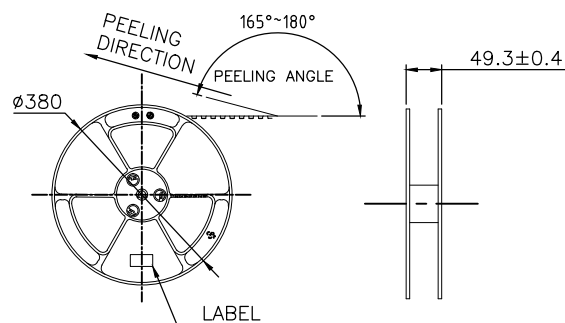
© COPYRIGHT BY TYCO ELECTRONICS CORPORATION. ALL RIGHTS RESERVED.

LOC
DW

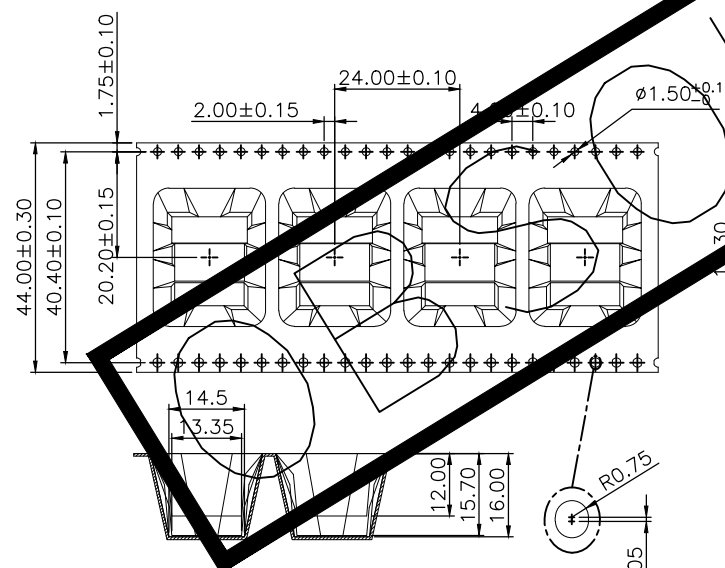
DIST

REVISIONS

P	LTR	DESCRIPTION	DATE	DWN	APVD
		SEE SHEET 1.			



PULL OUT DIRECTION



TOP COVER TAPE

LABEL

FOLDER PAPER BOARD

SHIPPING BOX

TAPE

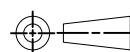
LABEL

11.20 Kg	6.10 Kg	200	7	1400 PCS	4-1734062-2	OBSOLETE
GROSS WEIGHT	NET WEIGHT	PCS/REEL	REELS/CARTON	QUANTITY	PART NUMBER	

THIS DRAWING IS A CONTROLLED DOCUMENT.

DIMENSIONS:

MM



TOLERANCES UNLESS OTHERWISE SPECIFIED:

0 PLC	±
1 PLC	±
2 PLC	±
3 PLC	±
4 PLC	±
ANGLES	±

MATERIAL

FINISH

DWN

CHK

APVD

PRODUCT SPEC

APPLICATION SPEC

WEIGHT

TE

TE Connectivity

NAME

USB CONNECTOR, A SERIES,
STACKED, OFFSET TYPE

SIZE

CAGE CODE

DRAWING NO

RESTRICTED TO

A300779

C-1734062

CUSTOMER DRAWING

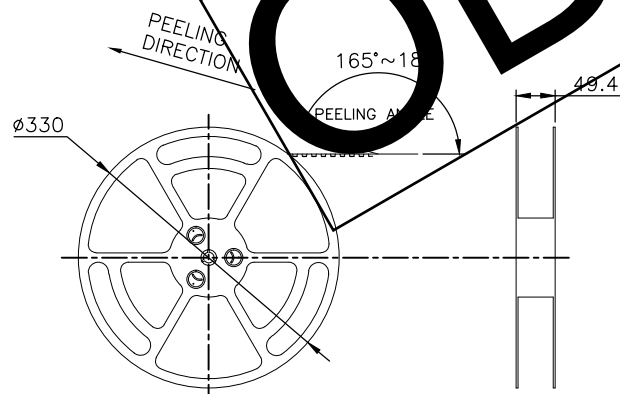
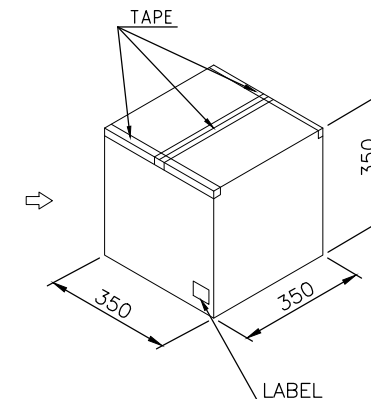
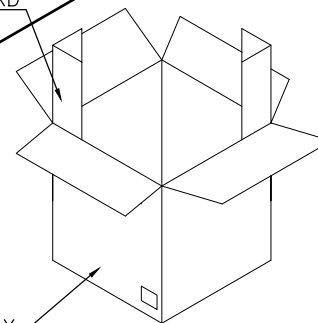
SCALE

SHEET

20 of 24

REV G8

SEE SHEET 1.

REV G8

4

3

2

1

THIS DRAWING IS UNPUBLISHED.

RELEASED FOR PUBLICATION

© COPYRIGHT BY TYCO ELECTRONICS CORPORATION. ALL RIGHTS RESERVED.

LOC
DW

DIST

REVISIONS

P	LTR	DESCRIPTION	DATE	DWN	APVD
		SEE SHEET 1.			

37.1

Ø330(13")

EMPTY SECTION (6 POCKETS MIN.) W/H PRODUCT CHARGE EMPTY SECTION (4 POCKETS MIN.)

TOP COVER TAPE

PULL OUT DIRECTION

R0.75

0.20±0.05

4.00±0.10

28.00

2.00±0.10

3.30
3.0
6.50
15.0044.00±0.20
40.40±0.10
20.20±0.10
1.75±0.10
14.45
13.40
9.20
15.95
1.45MAX

Ø1.55±0.05

ROUND HOLE

OVAL HOLE

BOX

LABEL

150	7	1050	8.93	4.95	6-1734062-1
PCS/REEL	REELS/BOX	QUANTITY (PCS)	G/W (Kg)	N/W (Kg)	PART NUMBER

THIS DRAWING IS A CONTROLLED DOCUMENT.

DIMENSIONS: MM	TOLERANCES UNLESS OTHERWISE SPECIFIED:
0 PLC	±
1 PLC	±
2 PLC	±
3 PLC	±
4 PLC	±
ANGLES	±
MATERIAL	FINISH

DWN

CHK

APVD

PRODUCT SPEC

APPLICATION SPEC

WEIGHT

CUSTOMER DRAWING

TE

TE Connectivity

NAME
USB CONNECTOR, A SERIES,
STACKED, OFFSET TYPESIZE CAGE CODE DRAWING NO RESTRICTED TO
A3 00779 C-1734062

SCALE SHEET 22 of 24 REV G8

4

3

2

1

THIS DRAWING IS UNPUBLISHED.

RELEASED FOR PUBLICATION

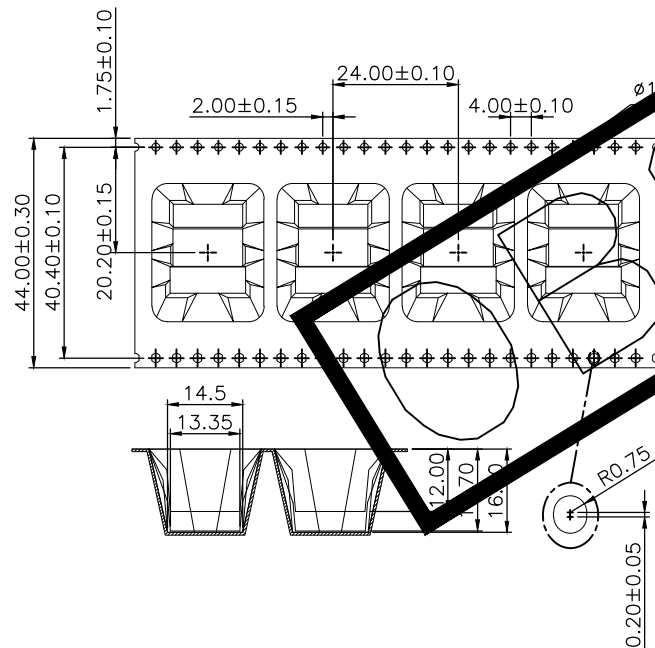
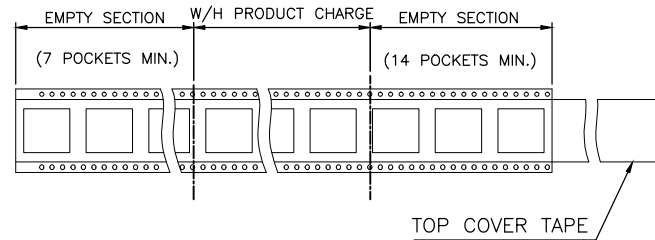
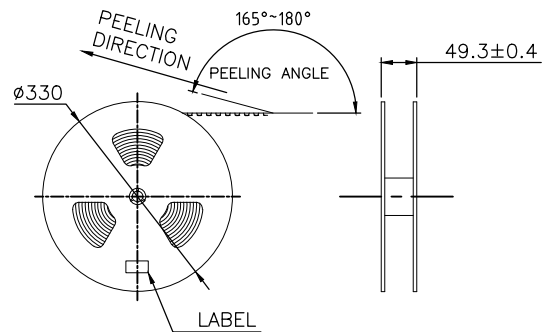
© COPYRIGHT BY TYCO ELECTRONICS CORPORATION. ALL RIGHTS RESERVED.

LOC
DW

DIST

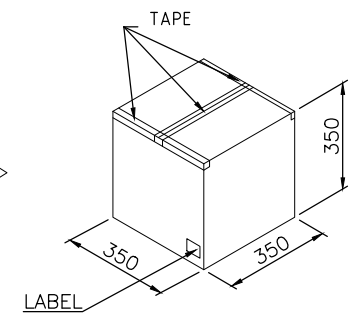
REVISIONS

P	LTR	DESCRIPTION	DATE	DWN	APVD
		SEE SHEET 1.			



FOLDER PAPER BOARD

SHIPPING BOX



130	7	910	7.94	3.91	7-1734062-1	OBSOLETE
PCS/REEL	REELS/BOX	QUANTITY (PCS)	G/W (Kg)	N/W (Kg)	PART NUMBER	

THIS DRAWING IS A CONTROLLED DOCUMENT.

DIMENSIONS:	TOLERANCES UNLESS OTHERWISE SPECIFIED:
MM	
0 PLC	±
1 PLC	±
2 PLC	±
3 PLC	±
4 PLC	±
ANGLES	±
MATERIAL	FINISH

DWN

CHK

APVD

PRODUCT SPEC

APPLICATION SPEC

WEIGHT

CUSTOMER DRAWING

TE

TE Connectivity

NAME	SIZE	CAGE CODE	DRAWING NO	RESTRICTED TO
USB CONNECTOR, A SERIES, STACKED, OFFSET TYPE	A3	00779	C-1734062	
SCALE	SHEET	23 of 24	REV	G8

4

3

2

1

THIS DRAWING IS UNPUBLISHED.

RELEASED FOR PUBLICATION

© COPYRIGHT BY TYCO ELECTRONICS CORPORATION. ALL RIGHTS RESERVED.

LOC
DW

DIST

REVISIONS

P	LTR	DESCRIPTION	DATE	DWN	APVD
		SEE SHEET 1.			

49.4

Ø330(13")

EMPTY SECTION W/H PRODUCT CHARGE EMPTY SECTION

(7 POCKETS MIN.)

(14 POCKETS MIN.)

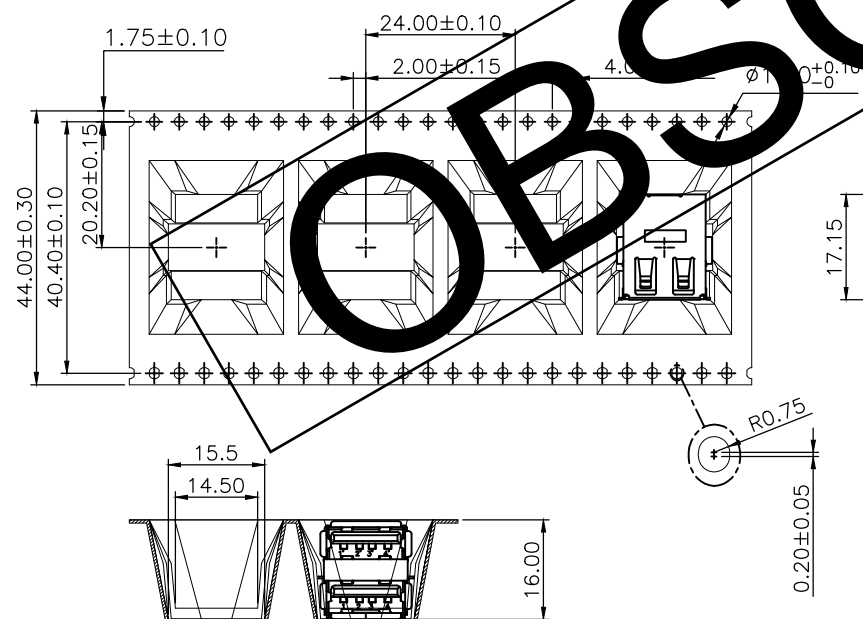
TOP COVER TAPE

PULL OUT DIRECTION

OBSOLETE

BOX

LABEL



180	7	1260	9.40	5.42	8-1734062-1
PCS/REEL	REELS/BOX	QUANTITY (PCS)	G/W (Kg)	N/W (Kg)	PART NUMBER

THIS DRAWING IS A CONTROLLED DOCUMENT.

DIMENSIONS:

MM

TOLERANCES UNLESS OTHERWISE SPECIFIED:

0 PLC ± -
 1 PLC ± -
 2 PLC ± -
 3 PLC ± -
 4 PLC ± -
 ANGLES ± -
 FINISH

MATERIAL

DWN

CHK

APVD

PRODUCT SPEC

APPLICATION SPEC

WEIGHT

CUSTOMER DRAWING

TE

TE Connectivity

NAME

USB CONNECTOR, A SERIES,
STACKED, OFFSET TYPE

SIZE

CAGE CODE

DRAWING NO

RESTRICTED TO

A300779

C-1734062

SCALE

SHEET

24 of 24

REV G8