

THIS DRAWING IS UNPUBLISHED. RELEASED FOR PUBLICATION
 © COPYRIGHT - By - ALL RIGHTS RESERVED.

LOC		DIST		REVISIONS			DATE	DWN	APVD
HB	-	P	LTR	DESCRIPTION					
		D		REMOVED THE RIB ON THE BASE TO CASE ECO-15-011310		04DEC2015	HYS	CHL	

D

D

C

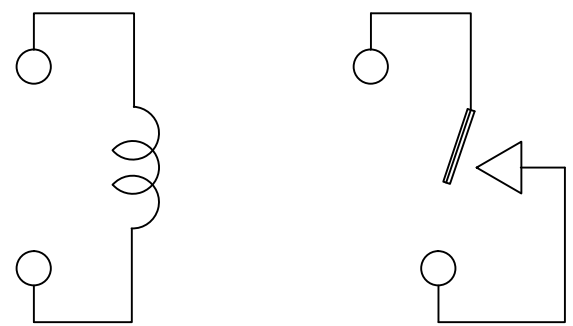
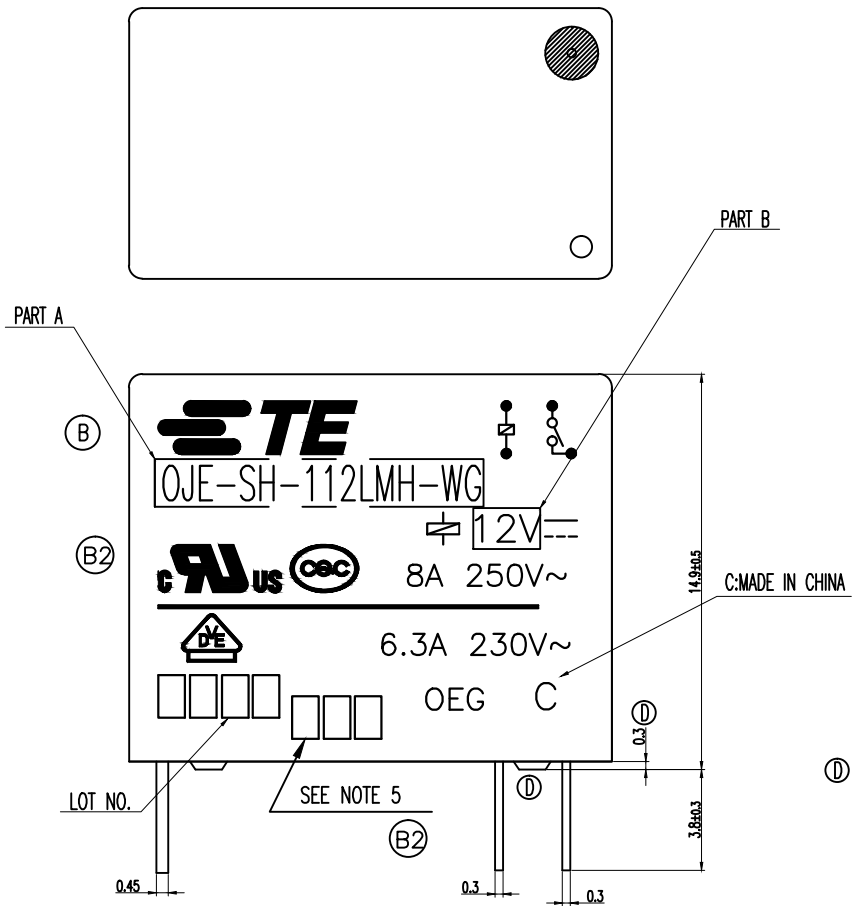
C

B

B

A

A



CONNECTION FIGURE

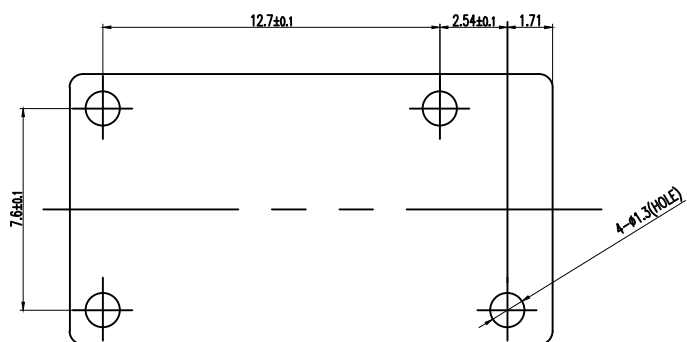


FIGURE FOR PRINTED CIRCUIT BOARD PROCESSING (BOTTOM VIEW)

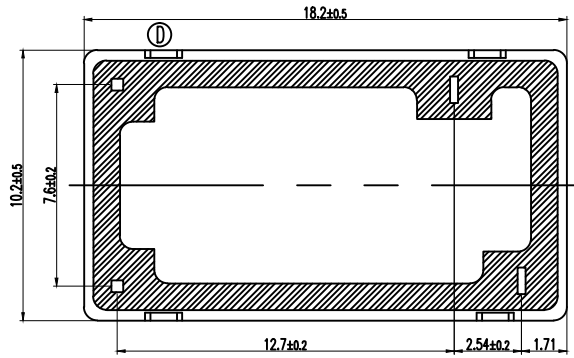


Diagram dimension	Tolerance
0.99mm max.	±0.1mm
1 - 2.99mm	±0.2mm
3mm min.	±0.3mm

THIS DRAWING IS A CONTROLLED DOCUMENT.		DWN Fu.Bo	TE Connectivity			
		CHK XN.Zhang				NAME
DIMENSIONS: mm		APVD CH.HSU	OJE-SH-LMH.SPEC.000			
TOLERANCES UNLESS OTHERWISE SPECIFIED:		PRODUCT SPEC SEE PRODUCT SPEC				
0 PLC ± - 1 PLC ± - 2 PLC ± - 3 PLC ± - 4 PLC ± - ANGLES ± -		APPLICATION SPEC				
MATERIAL	FINISH	WEIGHT	SIZE A3	CAGE CODE 00779	DRAWING NO C=1721875	RESTRICTED TO
CUSTOMER DRAWING			SCALE 5:1	SHEET 1 OF 2	REV D	

THIS DRAWING IS UNPUBLISHED. RELEASED FOR PUBLICATION - , - .
 © COPYRIGHT - By - ALL RIGHTS RESERVED.

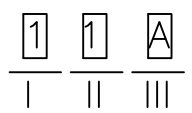
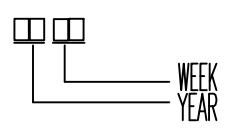
LOC	DIST	REVISIONS					
HB	-	P	LTR	DESCRIPTION	DATE	DWN	APVD
		-		SEE SHEET 1	-	-	-

1721875-6	OJE-SH-124LMH-WG	24V	OJE-SH-124LMH-WG	f
1721875-5	OJE-SH-112LMH-WG	12V	OJE-SH-112LMH-WG	e
1721875-4	OJE-SH-109LMH-WG	9V	OJE-SH-109LMH-WG	d
1721875-3	OJE-SH-106LMH-WG	6V	OJE-SH-106LMH-WG	c
1721875-2	OJE-SH-105LMH-WG	5V	OJE-SH-105LMH-WG	b
1721875-1	OJE-SH-103LMH-WG	3V	OJE-SH-103LMH-WG	a
TE PART NO	DESCRIPTION	PART B	PART A	TYPE

RELAY TYPE

ⓑ NOTES:

1. LOT NO. SYSTEM AS FOLLOWING: ⓑ 5. ADD LOT NO. SYSTEM AS FOLLOWING;



I, DIGITS FOR DAY OF THE WEEK
 1...MONDAY IN THIS WEEK;
 2...TUESDAY IN THIS WEEK;

 7...SUNDAY IN THIS WEEK
 II, DIGITS FOR SHIFT OF THE DAY
 1...DAY SHIFT IN THIS DAY;
 2...NIGHT SHIFT IN THIS DAY;
 III, ONE CHARACTER DISTINGUISH THE LINE
 IDENTITY,
 SUCH AS: A,B.....Z

- ⓑ 2. TERMINAL DIMENSION IS BEFORE SOLDER DIP;
- ⓑ 3. FOR THE TIN-PLATING OF THE PINS:
 +0.1mm FOR WIDTH, THICKNESS AND DIAMETER.
 +0.5mm FOR LENGTH.
- ⓑ 4. MARKING FROM INK TO LASER AND USING WELDED CONTACT

		UV RESIN	SEAL (VENT HOLE)	16
		EPOXY RESIN	SEAL (BASE & BOBBIN)	15
		MW79	MAGNETIC WIRE	14
94V-0		NYLON	CASE	13
94V-0		P.E.T	BASE	12
94V-0		NYLON	BOBBIN	11
	SOLDER DIP	C.P WIRE	COIL TERMINAL	10
94V-0		P.P.S	CARD	9
		Ag ALLOY	MOVABLE CONTACT	8
		Ag ALLOY	NO.CONTACT	7
		STEEL	HINGE SPRING	6
	SOLDER DIP	Cu ALLOY	NO.TERMINAL	5
	SOLDER DIP	Cu ALLOY	MOVABLE SPRING	4
	NIP	STEEL	CORE	3
	NIP	STEEL	ARMATURE	2
	NIP	STEEL	YOKE	1
INCOMBUSTIBILITY	TREATMENT	MATERIAL	DESCRIPTION	ITEM

THIS DRAWING IS A CONTROLLED DOCUMENT.		DWN Fu.Bo	TE Connectivity NAME OJE-SH-LMH.SPEC.000	
DIMENSIONS: mm		CHK XN.Zhang		
TOLERANCES UNLESS OTHERWISE SPECIFIED:		APVD CH.HSU		
0 PLC ± - 1 PLC ± - 2 PLC ± - 3 PLC ± - 4 PLC ± - ANGLES ± -		PRODUCT SPEC SEE PRODUCT SPEC		
MATERIAL -	FINISH -	APPLICATION SPEC -	SIZE A3	CAGE CODE 00779
		WEIGHT -	DRAWING NO C=1721875	
		CUSTOMER DRAWING	RESTRICTED TO -	SCALE 5:1
			SHEET 2 OF 2	REV D