

REV. NO.		DESCRIPTION	ECN	DATE	DWN	APVD
0	RELEASED	FJA0-0611-03	14MA104	K.S.	Y.F.	
A	REVISED	ECR-10-007503	07MA110	T.S.	K.B.	

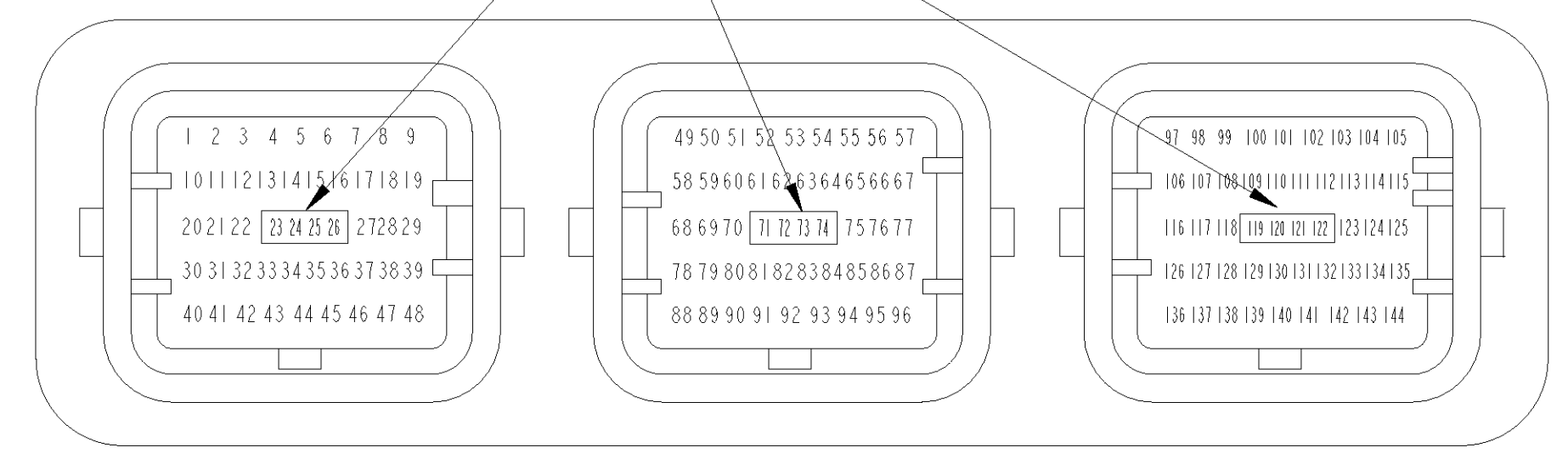
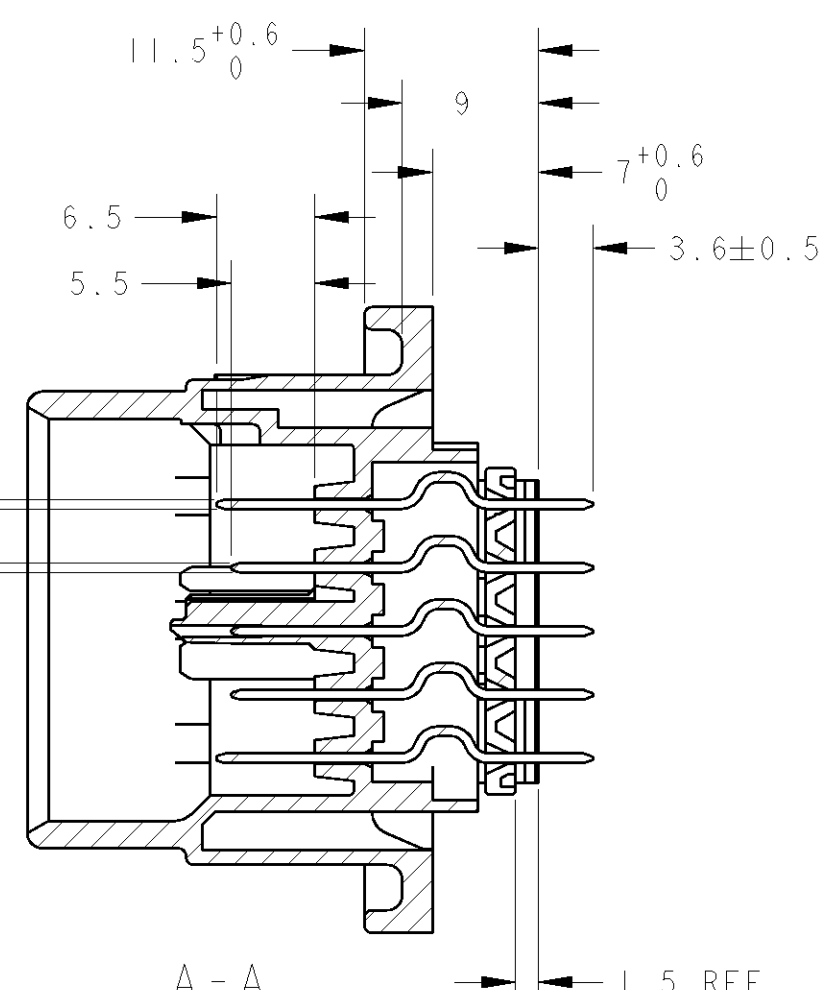
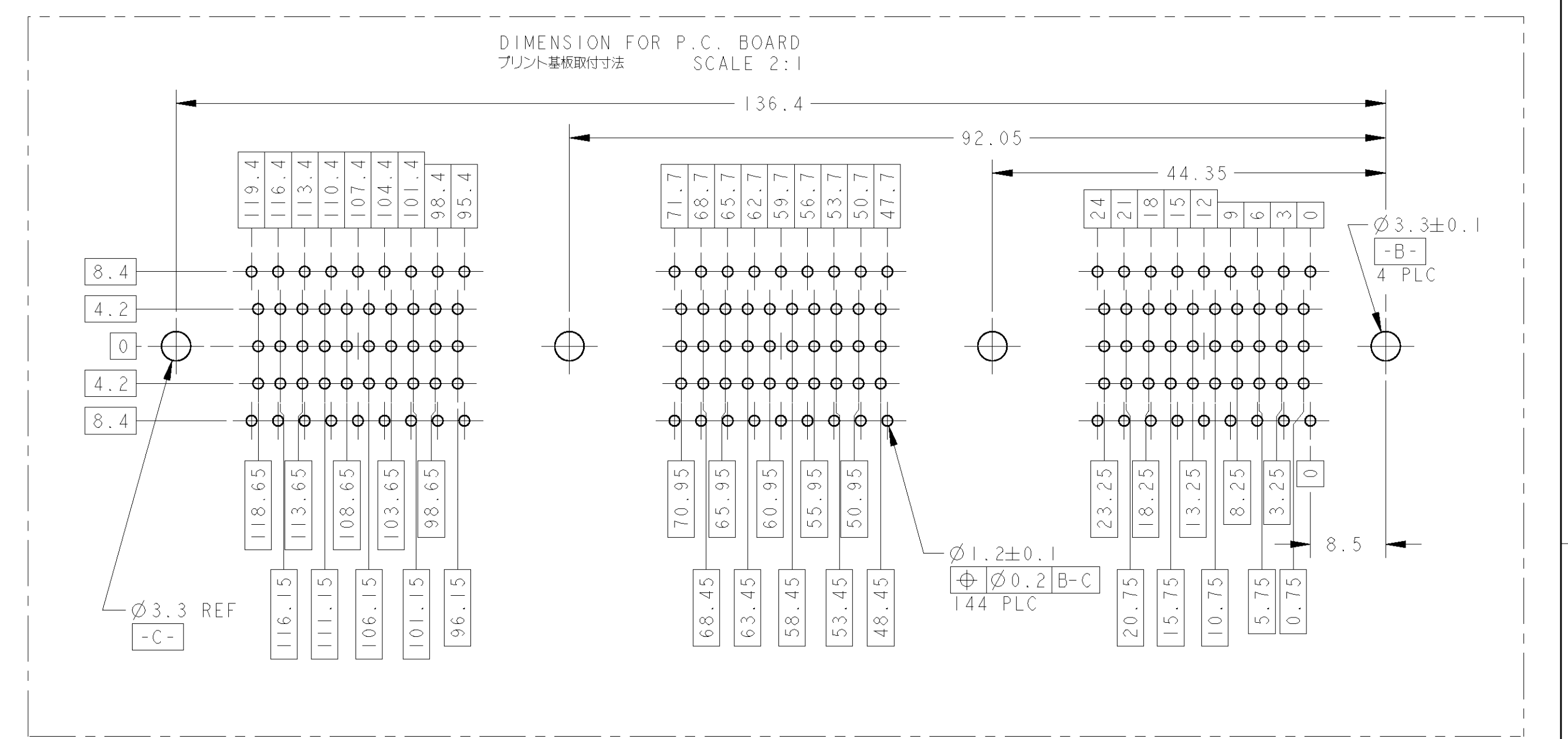
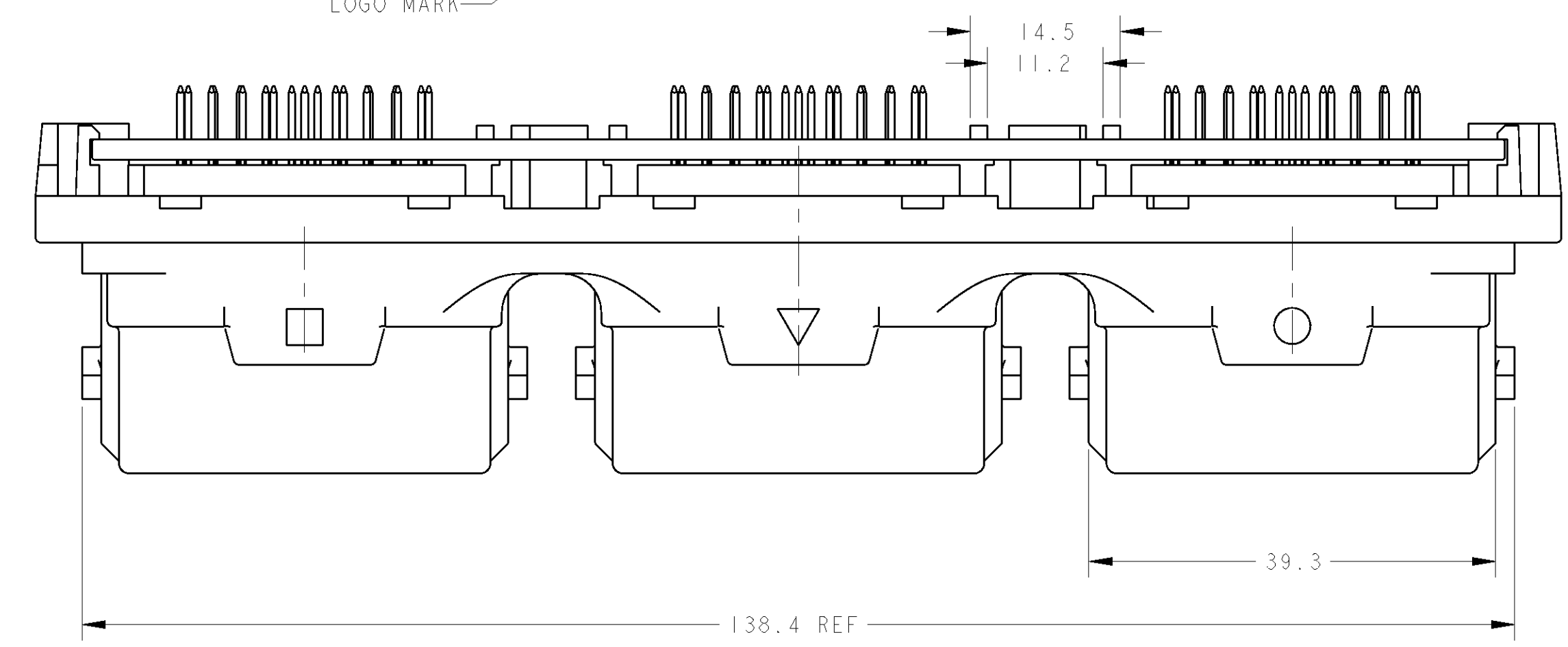
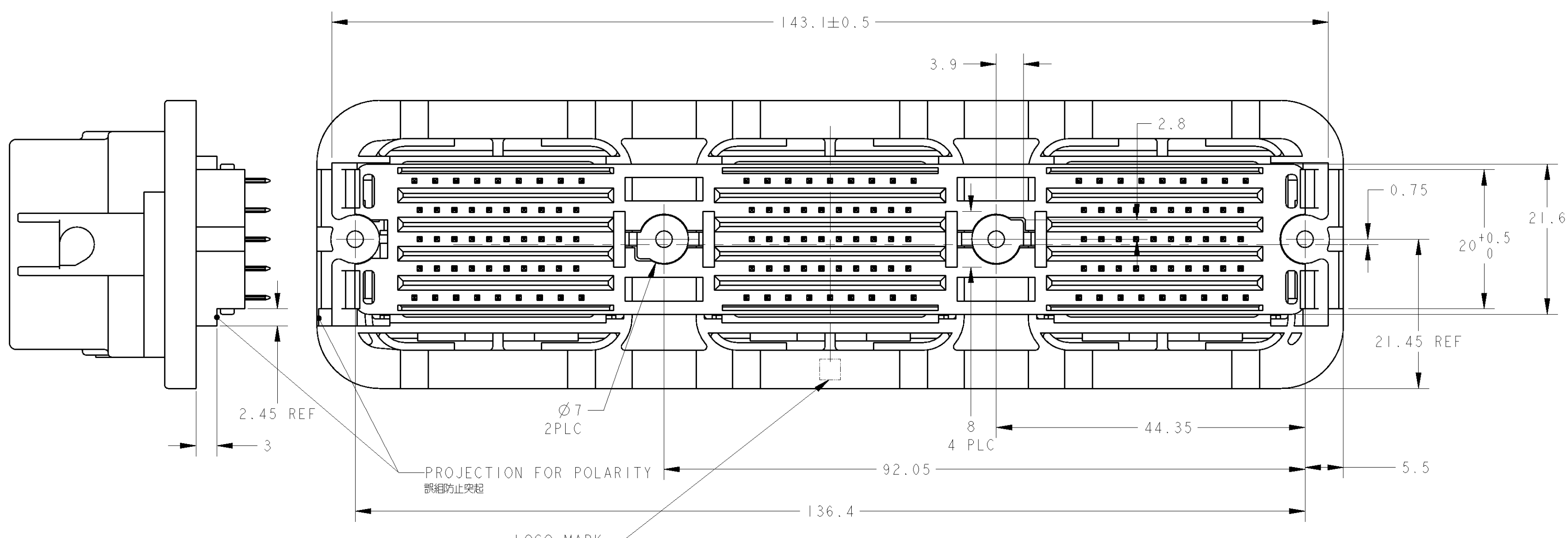
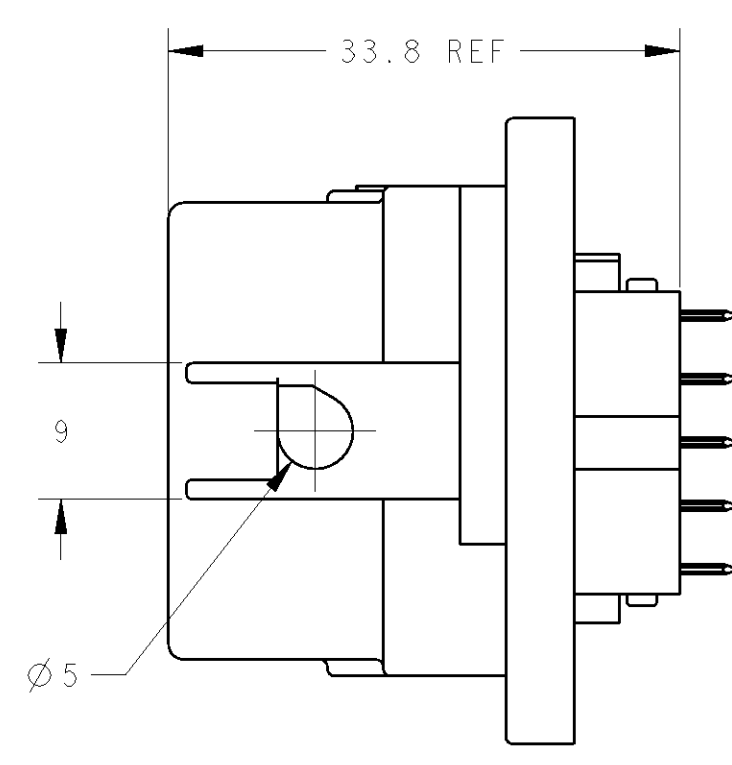
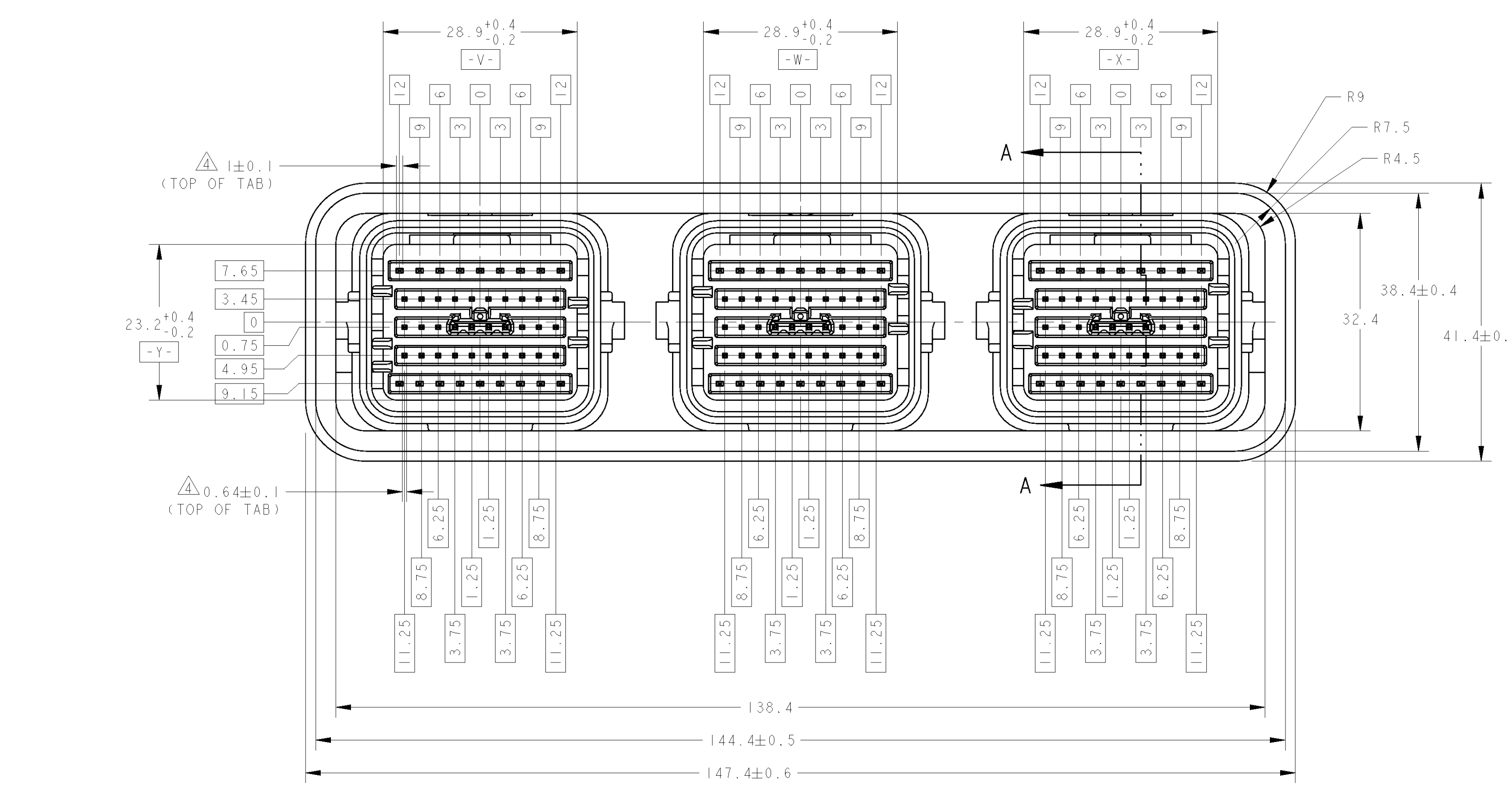


FIG. 1
 025/040 CLEAN BODY 132 POSITIONS CAP ASSEMBLY CIRCUIT LAYOUT
 025/040 132極キャップアセンブリア回路番号構成



- MATING WITH PLUG HOUSING SMOOTHLY. PLUG HOUSING PRODUCT NUMBER : 1717138
 - SOLDER AFTER MOUNTING ON P.C. BOARD BY TAPPING SCREW. TAPPING SCREW, 3mm DIA X 6mm LENGTH (MAX.) WITH PAN HEAD. CLASS 2 OR 4, JIS B1115 OR I122. (TIGHTENING TORQUE : 0.392N·m MAX.)
 - DO NOT USE THE TERMINAL INSIDE THE RIB.
 - TERTIARY DATUM : -V-, -W-, -X- OF EACH BLOCK.
 - CIRCUIT LAYOUT : REFER TO FIG.1
1. 相手ハウジングと支障なく嵌合できること。
 嵌合相手番番 : 1717138
2. プリント基板への取付けは、JIS B1115又はI122、M3X6ナベ(2種又は4種)のタッピングネジで締付けした後、ハンダ付けする。
 締付けトルク: 0.392N·m MAX.
3. リブ内の端子は使用しない。
4. 3次データについては、-V-, -W-, -X-を各々のブロックごとに適用すること。
5. 回路番号はFIG.1参照。

APPLY CIRCUIT NO	QTY	FINISH/COLOR	MATERIAL	PART NAME	ITEM NO	PART NUMBER
適用回路番号	数量	仕上げ/色	材料	部品名称		型番
1 TO 9, 40 TO 57, 88 TO 105, 136 TO 144	54	BLACK	PBT	TINE PLATE	4	1717139-1
10 TO 39, 58 TO 87, 106 TO 135	90	PRE-TIN	COPPER ALLOY	1.0 TAB	3	
		PRE-TIN	COPPER ALLOY	0.64 TAB	2	
	1	BLACK	PBT	CAP HOUSING	1	

DRN	SHIGA	14MA104		
CHK	Y. NOGUCHI	14MA104		
APVD	Y. FUJIMURA	14MA104		
PRODUCT SPEC				
APPLICATION SPEC				
WEIGHT	78.0			
CUSTOMER DRAWING				

TYCO ELECTRONICS CORPORATION
 Tyco Electronics Corporation
 Kawasaki, Japan

025/040 SEALED CONNECTOR

SIZE: 02779 C=1717139

SCALE: 2:1 SHEET 1 OF 1 REV A