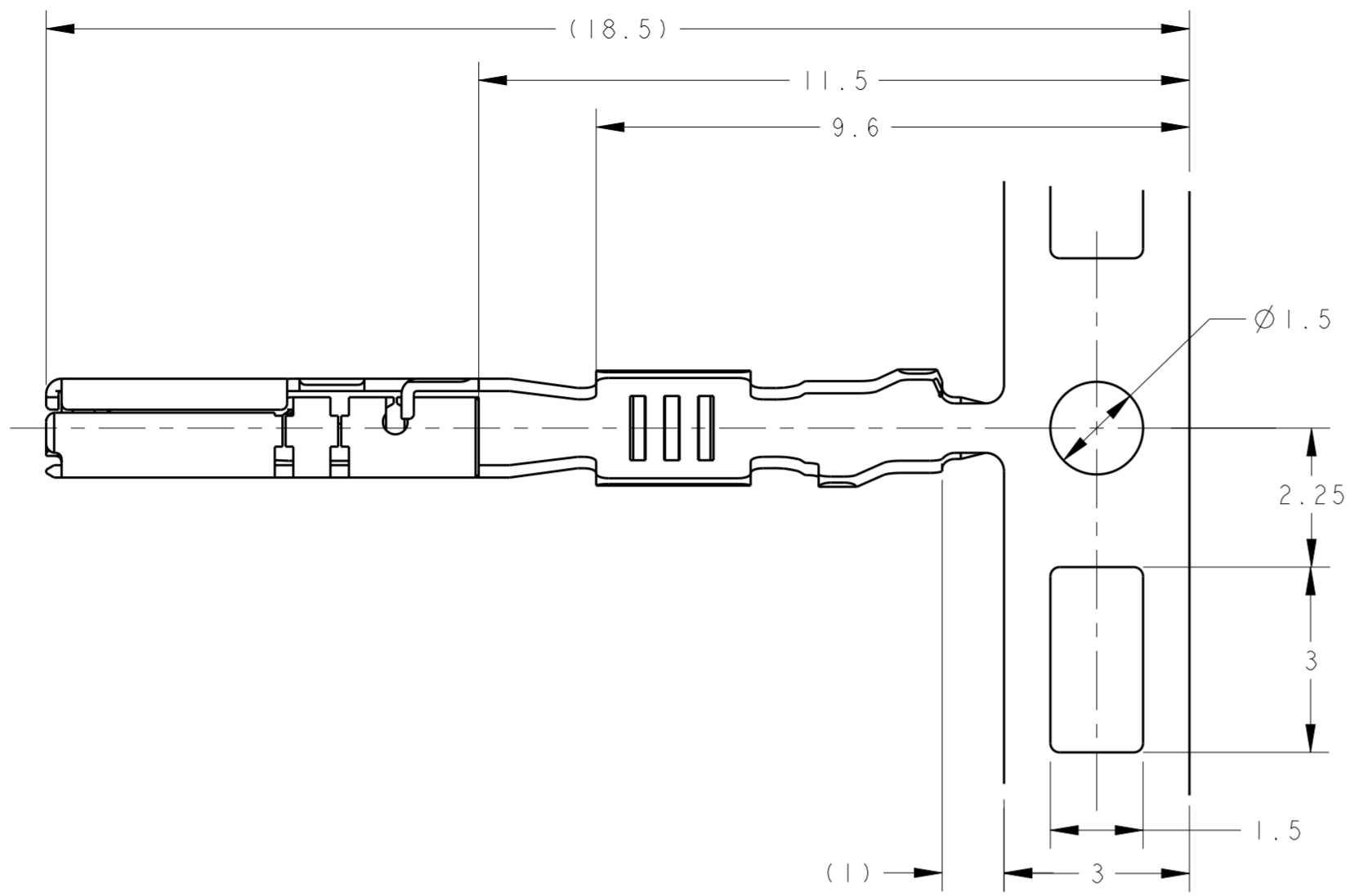
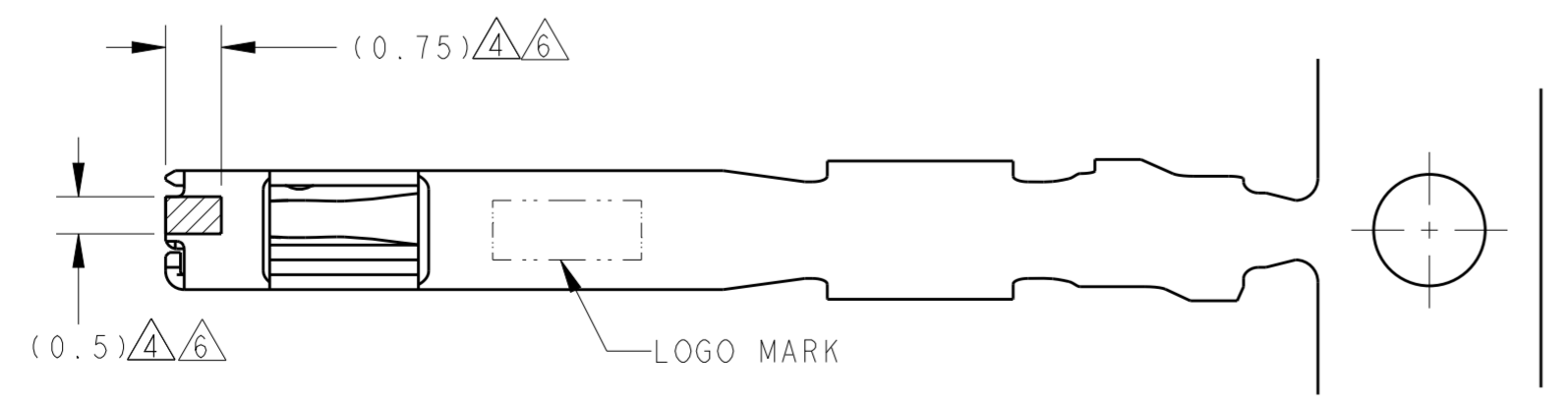
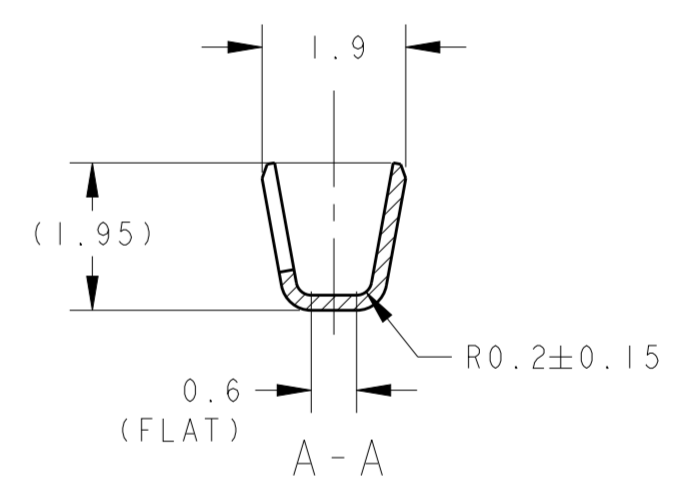
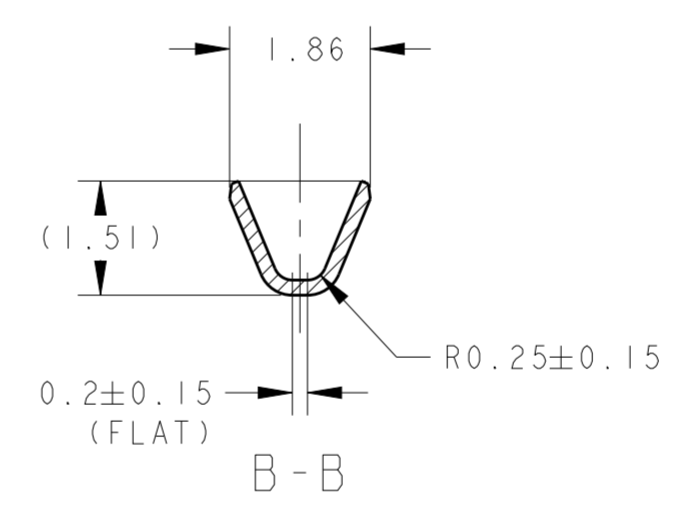
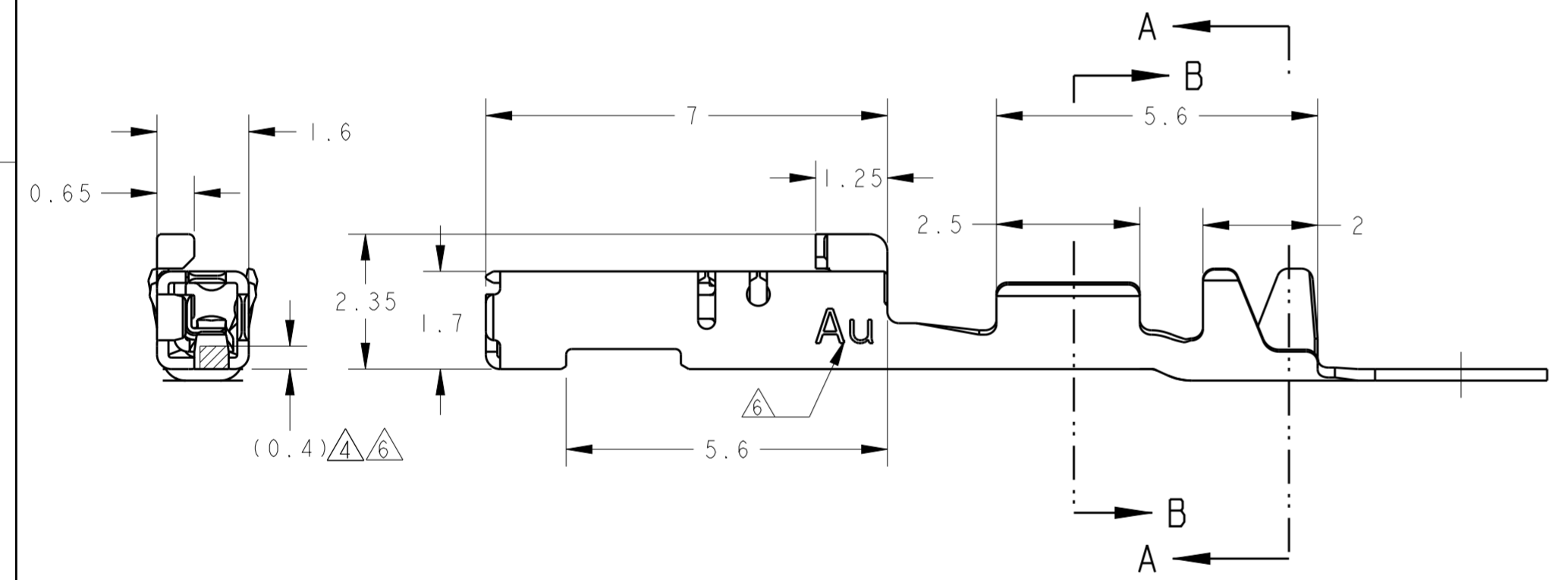


THIS DRAWING IS UNPUBLISHED. RELEASED FOR PUBLICATION OCT.2016
 © COPYRIGHT 2016 Tyco Electronics Japan G.K. ALL RIGHTS RESERVED.

LOC	DIST	REVISIONS					
J		P	LTR	DESCRIPTION	DATE	DWN	APVD
		A		RELEASED	05OCT16	RU	HY



- 1. 適用電線: CHFUS 0.22mm²
 - 2. 圧着条件については、以下の規格を参照すること
取付適用規格: 114-5329-13
 - 3. アプリケータ送りピッチ: 8mm
 - △4. 寸法は識別用金めっき範囲を表す
 - △5. 接触部: 金めっき、バレル部: すすめっき
 - △6. 1674936-6のみに適用
- 1. APPLICABLE WIRE RANGE: CHFUS 0.22mm²
 - 2. MUST BE REFERRED TO THE FOLLOWING DOCUMENTS FOR CRIMPING CONDITION
APPLICATION SPEC: 114-5329-13
 - 3. APPLICATOR FEED: 8mm
 - △4. GOLD PLATED AREA FOR IDENTIFICATION
 - △5. CONTACT POINT: GOLD PLATING
BARREL: TIN PLATING
 - △6. APPLY ONLY TO 1674936-6



△4△5 SELECTIVE GOLD, TIN	1674936-6
PRE-TIN	1674936-5
FINISH	TE PART NO.

THIS DRAWING IS A CONTROLLED DOCUMENT.		DWN R. UCHIIYAMA	05OCT16	TE Connectivity 0.64111 SERIES CONNECTOR RECEPTACLE S CONTACT	
DIMENSIONS: 単位: 英		CHK H. YAMAGAMI	05OCT16		
TOLERANCES UNLESS OTHERWISE SPECIFIED: 一般公差 ±0.3		APVD H. YAMAGAMI	05OCT16		
0-PLC ±		PRODUCT SPEC			
1-PLC ±		APPLICATION SPEC	114-5329-13	SIZE	A200779
2-PLC ±		取付適用規格		CAGE CODE	C-1674936-5
3-PLC ±		ANGLES ±3°00'		DRAWING NO	
4-PLC ±		FINISH 仕上		RESTRICTED	
MATERIAL 材料	Cu ALLOY	SEE TABLE	WEIGHT	0.14 g	SCALE 10.1
CUSTOMER DRAWING			SHEET	OF	REV A