

4

3

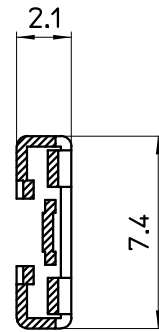
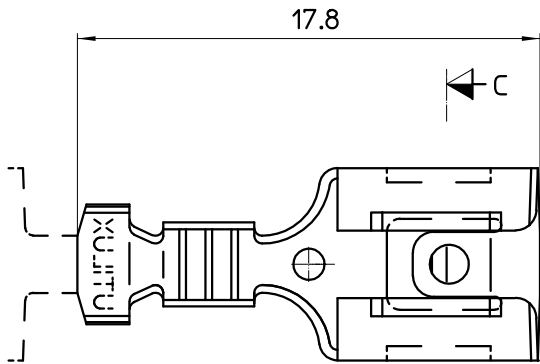
2

1

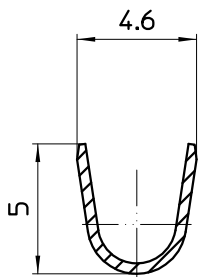
THIS DRAWING IS UNPUBLISHED. RELEASED FOR PUBLICATION
 © COPYRIGHT BY TYCO ELECTRONICS CORPORATION. ALL RIGHTS RESERVED.

LOC U
 DIST -

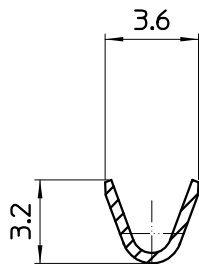
REVISIONS				DATE	DWN	APVD
P	LTR	DESCRIPTION				
01	ECR 06-007296	WIRE SIZE CORRECTED		10/04/06	HT	WR



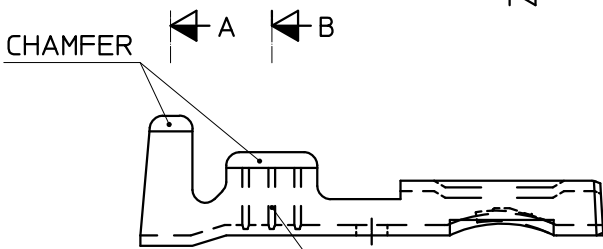
C-C



A-A



B-B



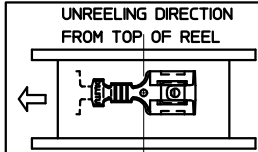
3 INTERNAL RIBS

NOTES:

- 1. WIRE SIZE RANGE:
 CONDUCTOR: 0.5mm² - 1.0mm²
 INSULATION DIA. : 2.2mm - 2.8mm
- 2. FOR CRIMPING DETAILS REFER
 TO UTILUX CRIMP CHART NO. H25901

THIS DRAWING IS A CONTROLLED DOCUMENT.

ALL DIMENSIONS IN mm:	TOLERANCES UNLESS OTHERWISE SPECIFIED:
	DIMENSION (mm) TOLERANCE (mm)
	LESS THAN 10 0.4
	OVER 10 TO 30 0.5
	OVER 30 TO 80 0.7
	OVER 80 TO 250 1.0
	ANGLES ±2°



MATERIAL	FINISH
-	-

BRASS	RECEPTACLE H25901	1-1659251-0
MATERIAL	DESCRIPTION	PART No.
W.RIEDE 2.11.04	tyco Tyco Electronics Corporation	
H.THAI 2.11.04	Electronics AUSTRALIA	
W.RIEDE 2.11.04	NAME: RECEPTACLE QC 6.3	
PRODUCT SPEC:	SIZE	CAGE CODE
-	A3	
APPLICATION SPEC:	DRAWING NO	
-	C=1659251	
WEIGHT:	RESTRICTED TO	
-		
CUSTOMER DRAWING		
SCALE 5:1	SHEET 1 OF 1	REV 01

THIS INFORMATION IS CONFIDENTIAL AND PROPRIETARY TO TYCO ELECTRONICS CORPORATION. IT IS NOT TO BE DISCLOSED TO ANYONE OTHER THAN TYCO ELECTRONICS PERSONNEL WITHOUT WRITTEN AUTHORIZATION FROM TYCO ELECTRONICS CORPORATION, THUNDERBOLT, PENNSYLVANIA, USA.