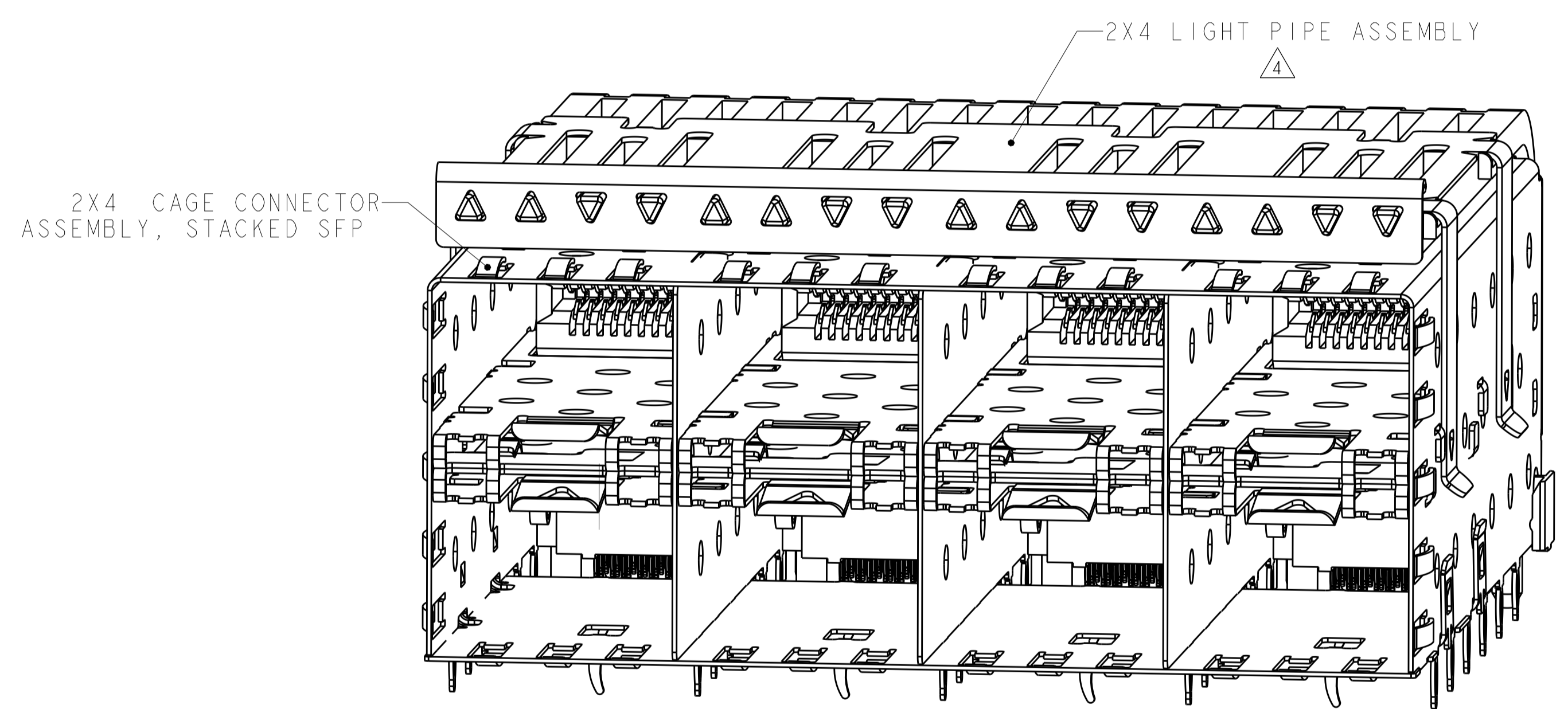
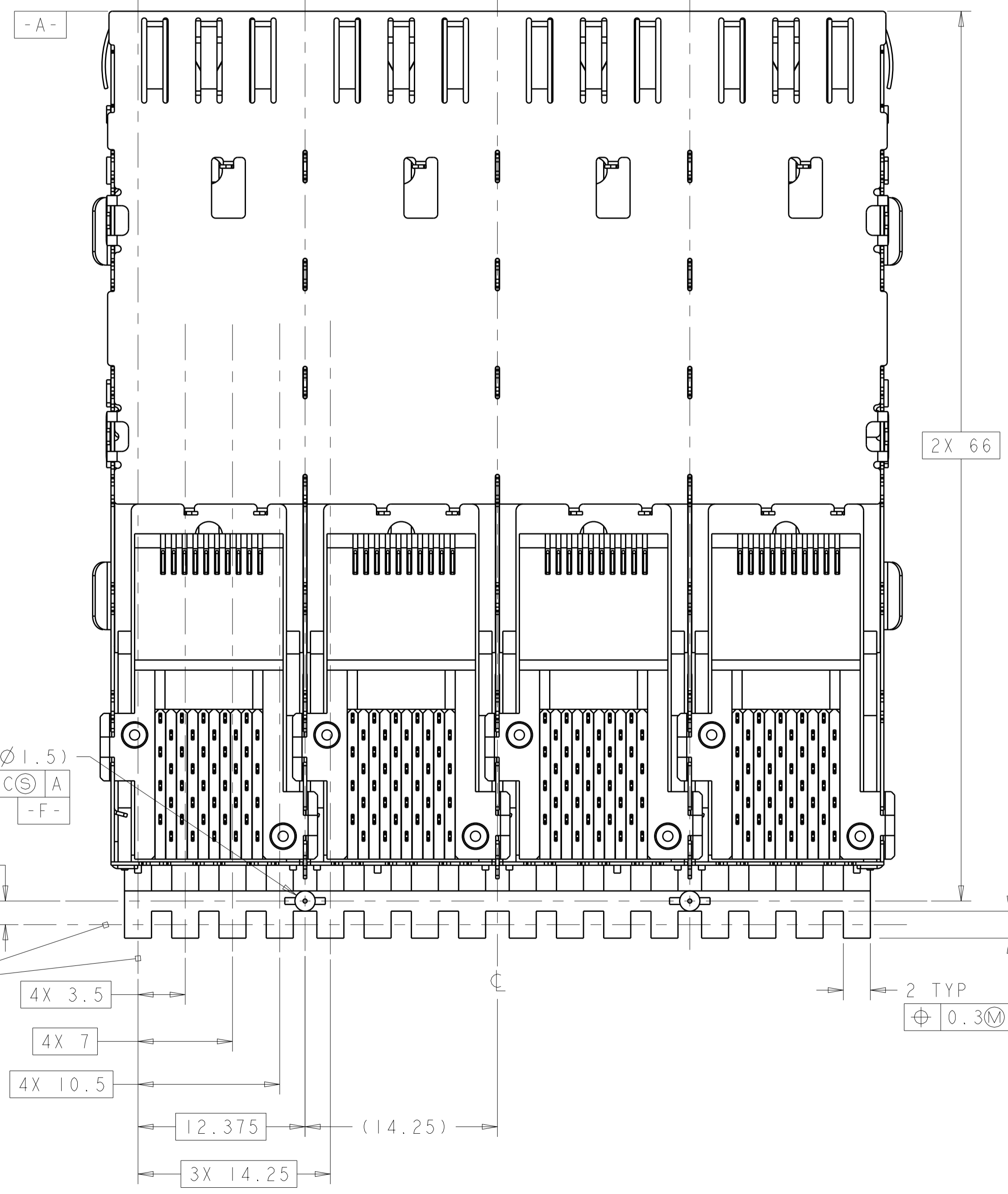
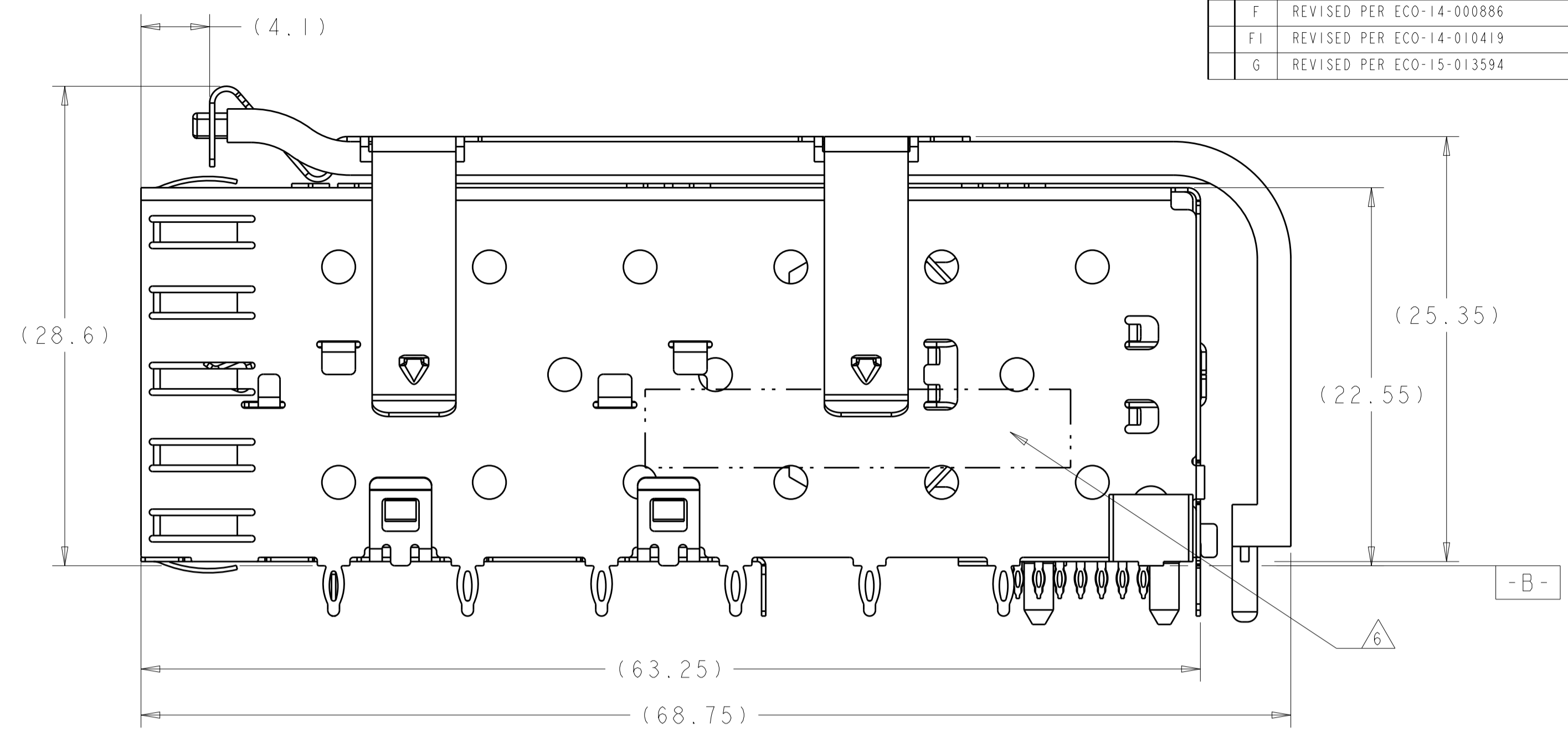
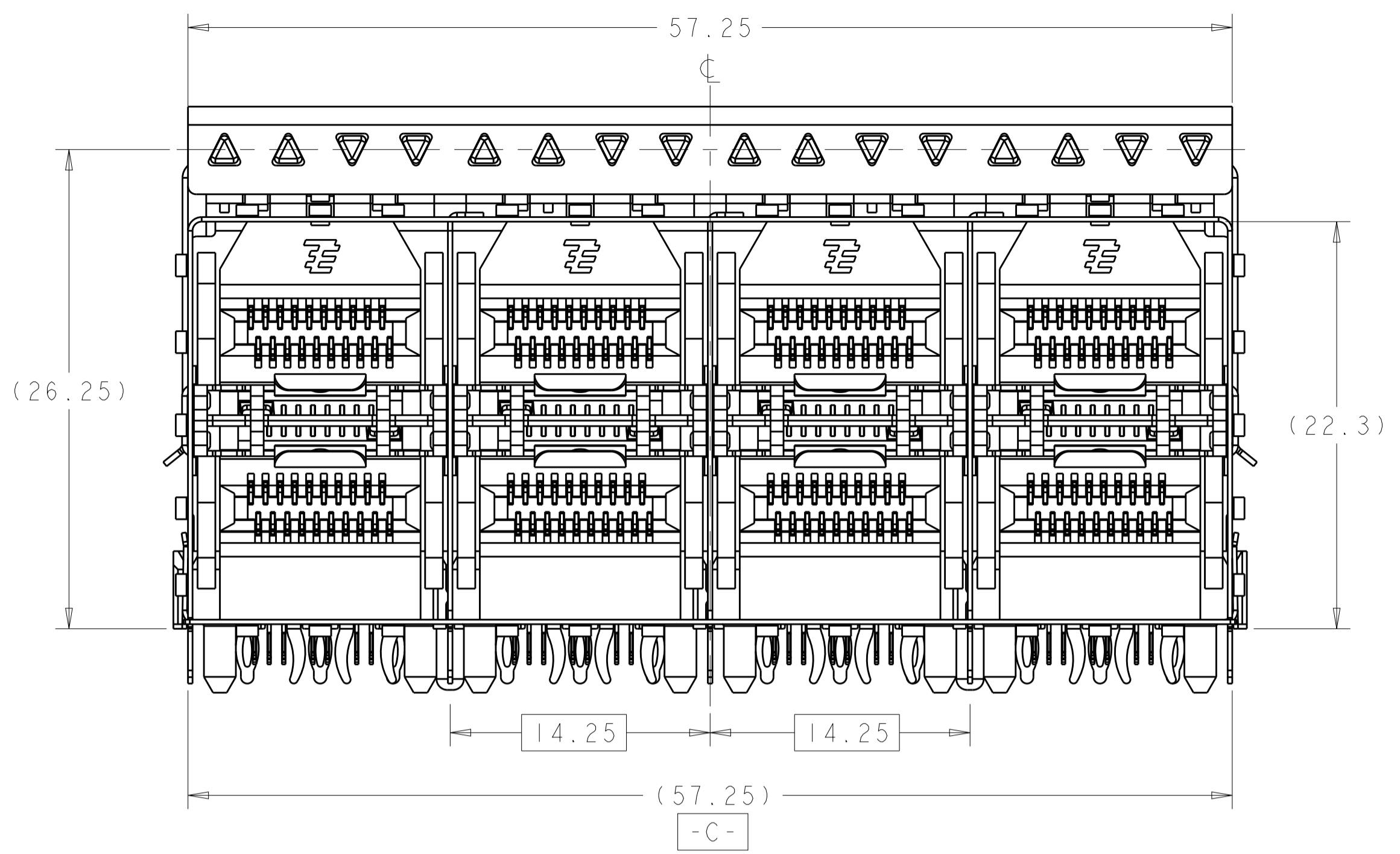


LOC	DIST	REVISIONS					
ES	00	P	LTN	DESCRIPTION	DATE	DWN	APVD
		D		REVISED PER ECO-10-023688	25NOV2010	JY	CW
		F		REVISED PER ECO-14-000886	20FEB2014	JW	SH
		F1		REVISED PER ECO-14-010419	11JUL2014	JW	SH
		G		REVISED PER ECO-15-013594	22SEP2015	JW	SH



(Ø 1.5)
 ⊕ Ø 0.5(M) B C(S) A
 -F-

2 TYP
 ⊕ 0.3(M) B F(S) C(S)

2 TYP
 ⊕ 0.3(M) B F(S) C(S)

- ⚠ DATUM AND BASIC DIMENSION TO BE DETERMINED BY CUSTOMER
- ⚠ DATUM C APPLIES OVER ENTIRE DIMENSION
- ⚠ INTERPRETATION OF DATUM REFERENCE FRAME IN ACCORDANCE WITH SECT 4.4.1.1 OF ASME Y14.5M-1994
- ⚠ LIGHT PIPE KIT SUPPLIED SEPERATELY, KIT TO BE ATTACHED AFTER SEATING OF CAGE CONNECTOR ASSEMBLY ON BOARD.
- 5. CONNECTOR ASSEMBLY CONSIST OF LIGHT PIPE ASSEMBLY AND CAGE/CONNECTOR ASSEMBLY, SUPPLIED UNASSEMBLED.
- ⚠ DATE CODE AND PART NUMBER IN APPROXIMATE AREA SHOWN LABEL ON CAGE ASSEMBLY WILL HAVE PART NUMBER 1658629-1/2170264-1.

SUPERSEDED BY:
 1658758-3

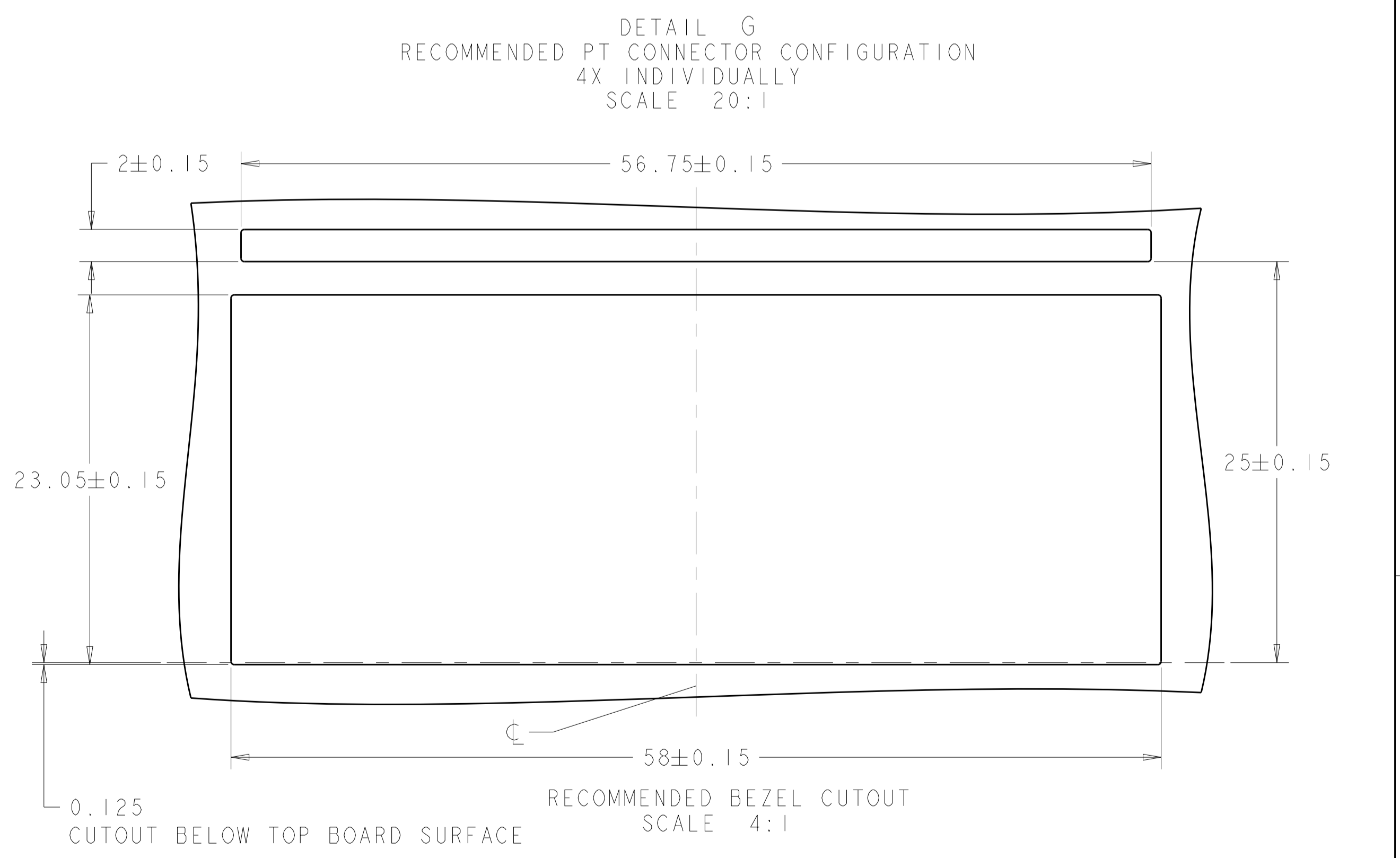
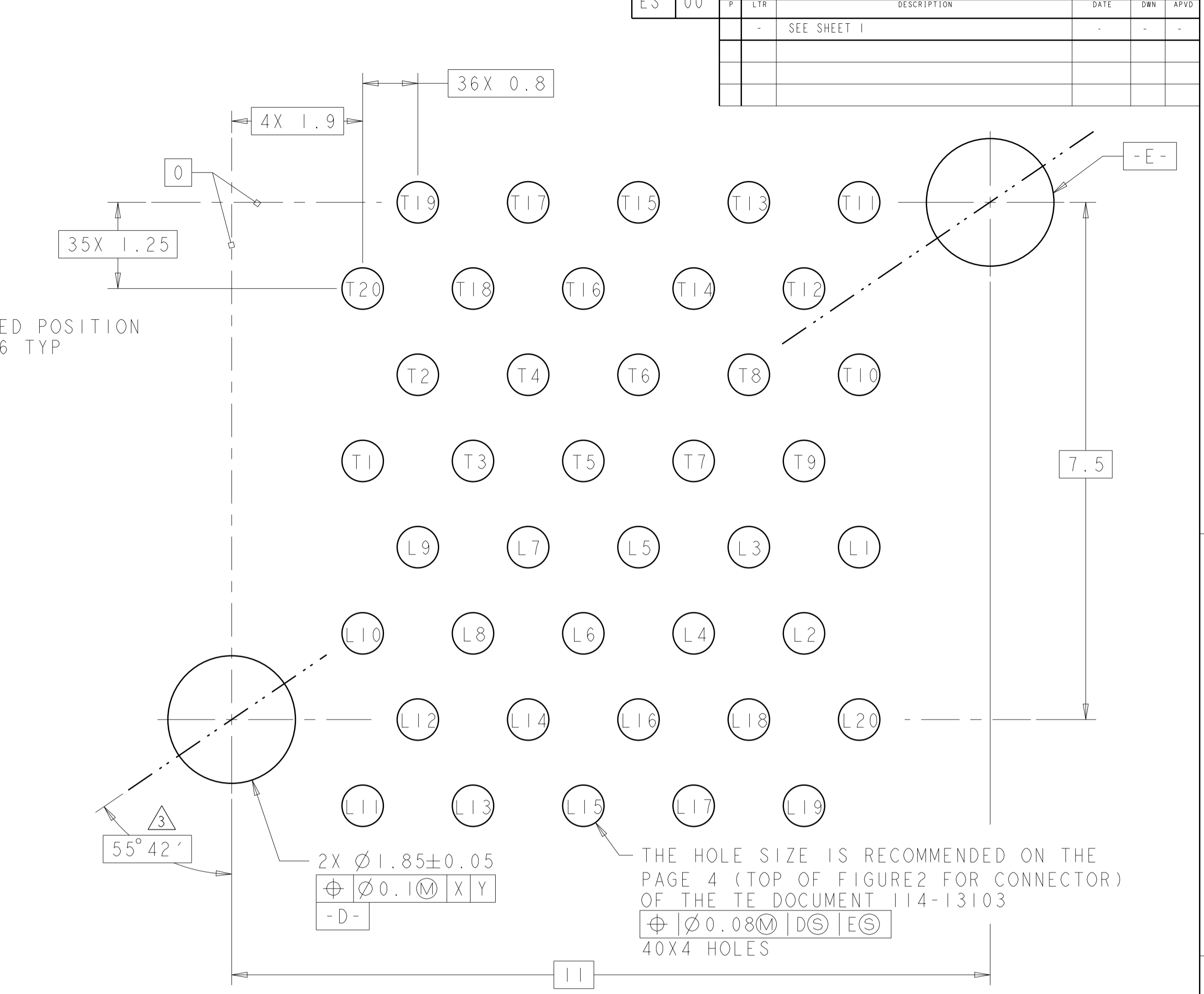
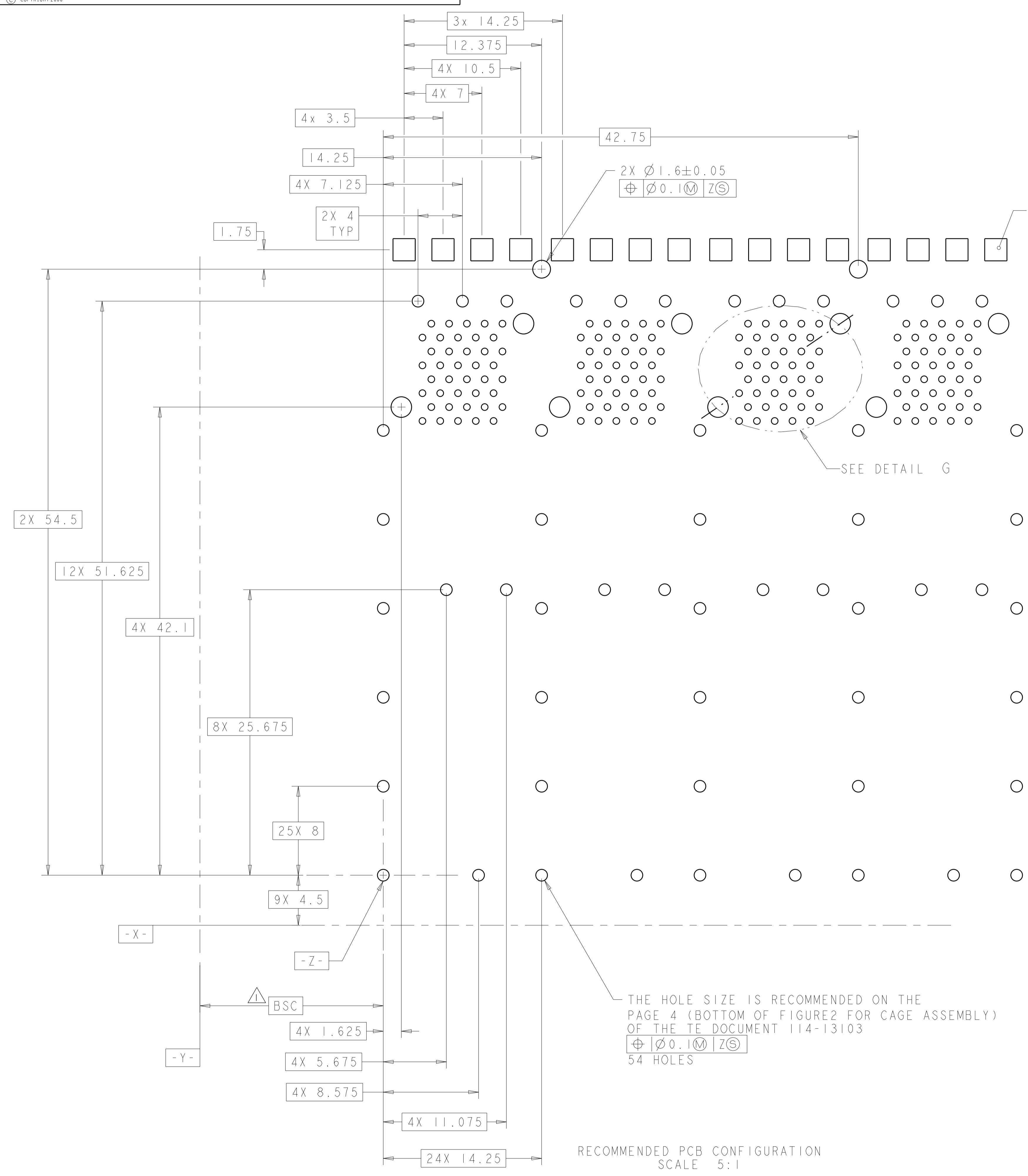
1761005-1	2170286-1	1658758-3
1761005-1	1658629-1	1658758-1
LIGHT PIPE ASSEMBLY	CAGE CONNECTOR ASSEMBLY	PART NUMBER

THIS DRAWING IS A CONTROLLED DOCUMENT.

DIMENSIONS:	TOLERANCES UNLESS OTHERWISE SPECIFIED:	DWN	M. E. CONNER	8JUN2003
mm	0 PLC ±0.25	CHK	R. R. HENRY	18JUN2003
	1 PLC ±0.25	APVD	R. R. HENRY	18JUN2003
	3 PLC ±0.1	PRODUCT SPEC		
	4 PLC ±	APPLICATION SPEC		
	ANGLES ±	114-13103		
MATERIAL	FINISH	WEIGHT		

TE Connectivity
STE
 2X4 CONNECTOR ASSEMBLY, STACKED SFP, WITH 2X4 SFP CAGE AND LIGHT PIPE KIT
 SIZE: A1 CAGE CODE: 1658758
 SCALE: 4:1 SHEET 1 OF 2 REV G

LOC		DIST		REVISIONS			
ES	00	P	LTN	DESCRIPTION	DATE	DMN	APVD
		-		SEE SHEET 1			



THE HOLE SIZE IS RECOMMENDED ON THE PAGE 4 (BOTTOM OF FIGURE 2 FOR CAGE ASSEMBLY) OF THE TE DOCUMENT 114-13103
 $\oplus \varnothing 0.1 \text{ M} \text{ Z S}$
 54 HOLES

THIS DRAWING IS A CONTROLLED DOCUMENT.		DMN: M.E. CONNER 18JUN2003	TE Connectivity
DIMENSIONS: mm		CHK: R.R. HENRY 18JUN2003	
TOLERANCES UNLESS OTHERWISE SPECIFIED:		APVD: R.R. HENRY 18JUN2003	NAME: 2x4 CONNECTOR ASSEMBLY, STACKED SFP WITH 2x4 SFP CAGE AND LIGHT PIPE KIT PRODUCT SPEC: 108-2161 APPLICATION SPEC:
0 PLC ±0.25 1 PLC ±0.25 2 PLC ±0.1 3 PLC ± 4 PLC ± ANGLES ± FINISH ±		SIZE: A1 CAGE CODE: C=1658758 WEIGHT:	
MATERIAL:		SCALE: 4:1	RESTRICTED TO: G