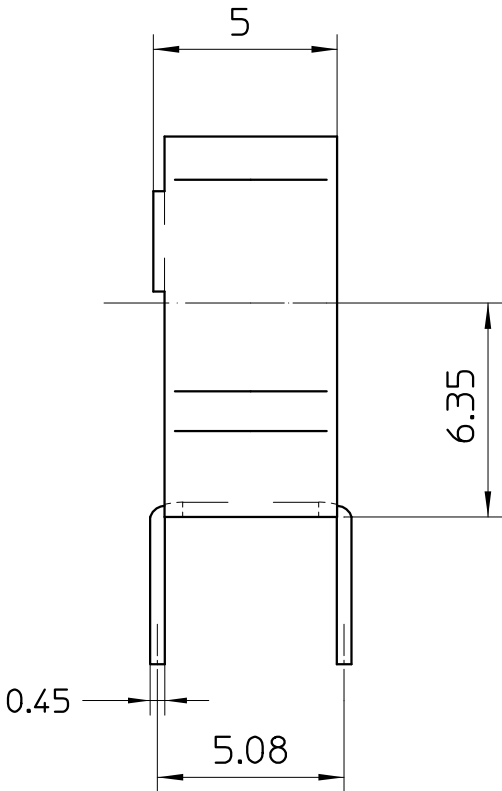
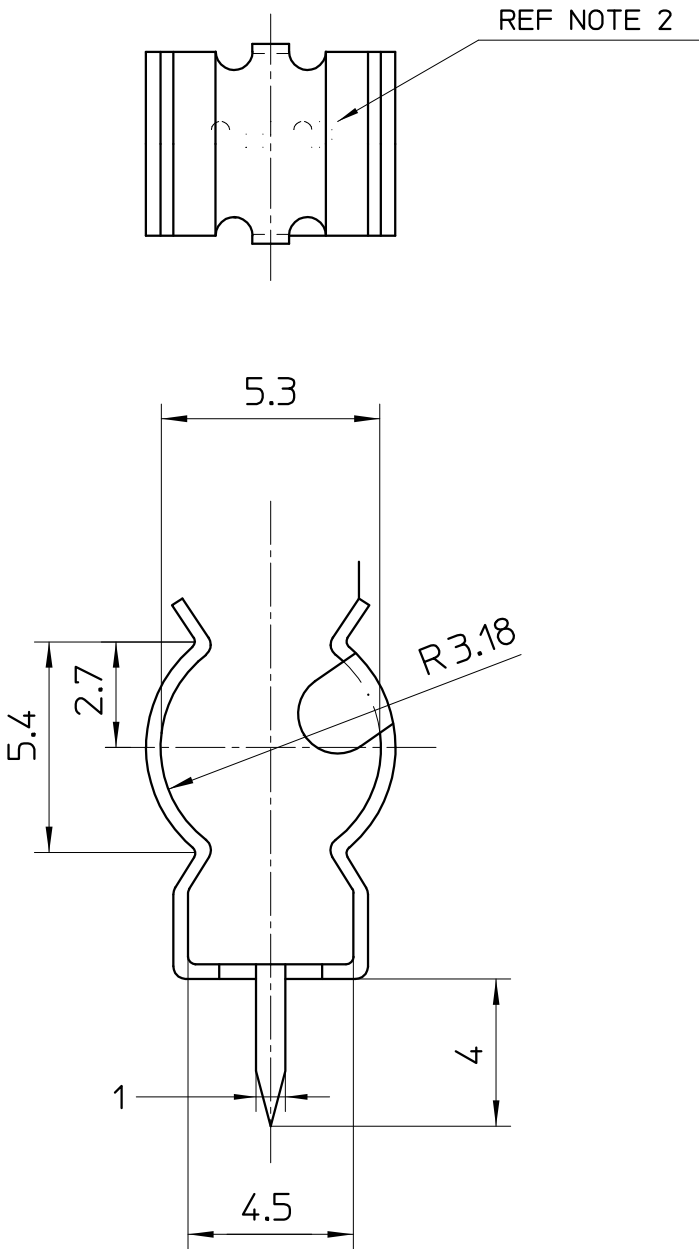

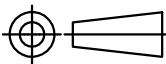


THIS INFORMATION IS CONFIDENTIAL AND PROPRIETARY TO
TYCO ELECTRONICS CORPORATION AND ITS WORLDWIDE
SUBSIDIARIES AND AFFILIATES. IT MAY NOT BE DISCLOSED
TO ANYONE OTHER THAN TYCO ELECTRONICS PERSONNEL
WITHOUT WRITTEN AUTHORIZATION FROM TYCO ELECTRONICS
CORPORATION, HANNSBURG, PENNSYLVANIA, USA.

NOTES:

1. 'UTILUX' OR 'AMP' LOGO STAMPED AS REQUIRED.



BRASS C26000		POST-PLATED ELECTRO TIN		FUSE CLIP (H3990)		1-1627184-1	
MATERIAL DESC.		FINISH		DESCRIPTION (UTXP/N:)		PART No.	
THIS DRAWING IS A CONTROLLED DOCUMENT.		DWN: N.PATEL 20 OCT 08		<div> Kingsgrove AUSTRALIA</div>			
		CHK: W.RIEDE 20 OCT 08					
ALL DIMENSIONS IN mm:		TOLERANCES UNLESS OTHERWISE SPECIFIED:		NAME: FUSE CLIP			
		DIMENSION (mm) TOLERANCE (+/-mm)					
		LESS THAN 10 0.4					
		OVER 10 TO 30 0.5					
		OVER 30 TO 80 0.7					
		OVER 80 TO 250 1.0					
		ANGLES ±2°					
MATERIAL REF BLOCK		FINISH REF BLOCK		APVD: W.RIEDE 20 OCT 08		SIZE A3 CAGE CODE DRAWING NO ©=1627184 RESTRICTED TO	
		PRODUCT SPEC:					
		APPLICATION SPEC:					
		WEIGHT: -					
				CUSTOMER DRAWING			
				SCALE 5:1		SHEET 1 OF 1	
						REV 0	