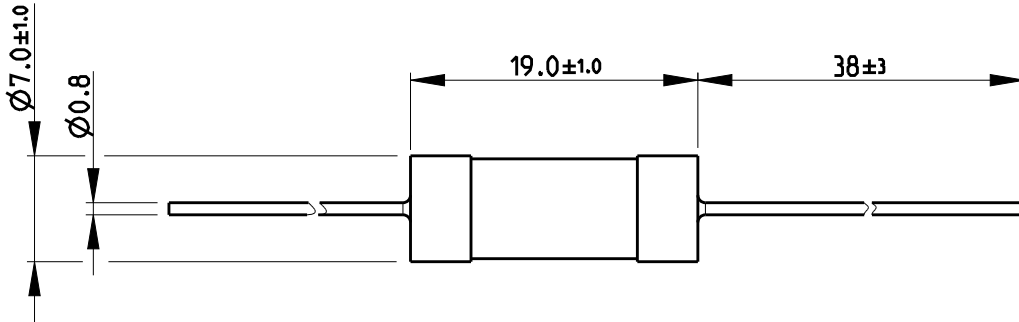


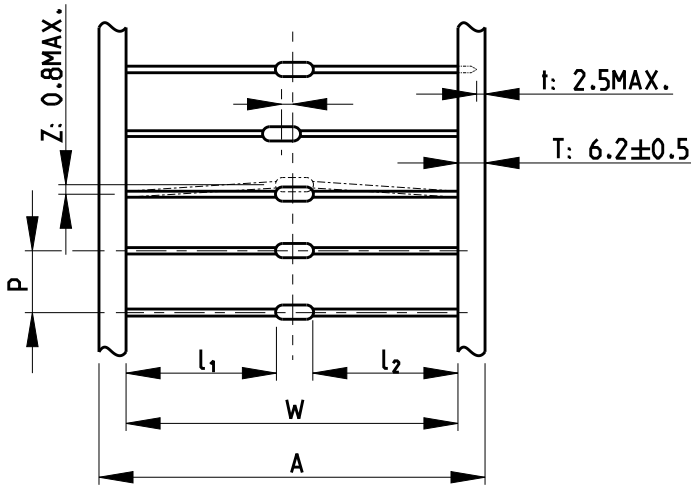
| LOC | DIST | REVISIONS | | | | | |
|-----|------|-----------|-----|---------------------------|-----------|-----|------|
| E | B | P | LTR | DESCRIPTION | DATE | DWN | APVD |
| | | | BA1 | REVISED PER ECO-11-005150 | 29MAR2011 | RK | HMR |
| | | | BA2 | REVISED PER ECR-18-014264 | 07SEP2018 | SR | CB |

FOR FURTHER INFORMATION SEE DATA SHEET FOR CCR SERIES-CERAMIC COMPOSITION RESISTORS

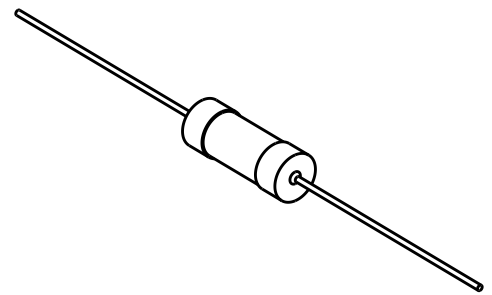


NOTE:
DIMENSIONS SHOWN ABOVE ONLY REFER TO PRODUCT SUPPLIED AS BULK.
FOR TAPED OPTION REFER TO TABLE AND DIAGRAM BELOW.

TAPE PACKAGING GRAPHIC



RoHS Compliant



SCALE 1:1

| PACKAGING STYLE | DIMENSIONS(mm) | | | | |
|-----------------|----------------|------------|--------|--------------------------------|-----------------------|
| | W | P | A | l ₁ -l ₂ | ACCUMULATED TOLERANCE |
| CCR1/2 | 52±1 | 5.08±0.38 | 65±1.0 | 1.0Max. | 101.6±2mm/Px20 |
| CCR1/CCR2 | 63±1 | 10.16±0.80 | - | 1.0Max. | 203.2±3mm/Px20 |

2008

RELEASED FOR PUBLICATION

ALL RIGHTS RESERVED.

THIS DRAWING IS UNPUBLISHED.

© COPYRIGHT 2008

| | | | | | | |
|--|--|--------------------------------|------------------|-----------|--|---------------|
| DIMENSIONS: mm | | DWN SUBHASH.M 19-Sep-08 | MATERIAL | FINISH | | |
| TOLERANCES UNLESS OTHERWISE SPECIFIED: | | CHK PRAKASH.S 19-Sep-08 | TE Connectivity | | | |
| 0 PLC ±0.2 1 PLC ±0.1 2 PLC ± 3 PLC ± 4 PLC ± ANGLES 5° | | APVD STEPHEN.P 19-Sep-08 | | | NAME CERAMIC COMPOSITION RESISTORS SERIES CCR2 | |
| PRODUCT SPEC | | - | SIZE | CAGE CODE | DRAWING NO | RESTRICTED TO |
| APPLICATION SPEC | | - | A 4 | 00779 | C-1623720 | |
| WEIGHT | | - | CUSTOMER DRAWING | | | |
| | | | SCALE | SHEET | OF | REV |
| | | | 2:1 | 1 | 1 | BA2 |