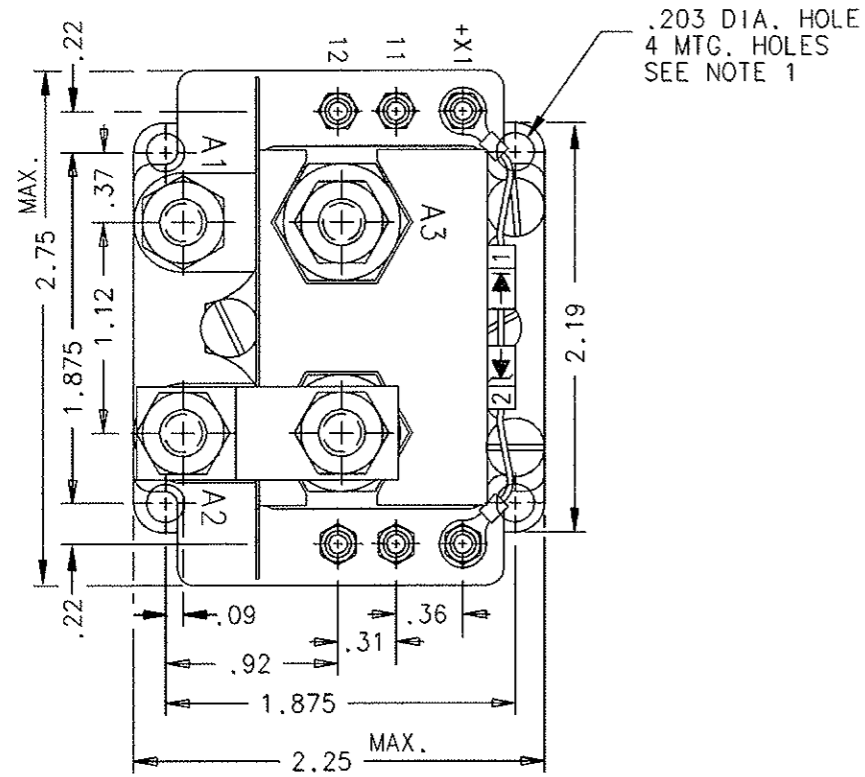


| REVISIONS | | | RELEASED | |
|-----------|--|----------|----------|----|
| REV | DESCRIPTION | DATE | APPROVED | |
| F 21709 | REDRAWN, ADDED "SILASTIC SEALED" TO CONSTRUCTION | 92/01/10 | | |
| G 26209 | SCHEMATIC DIAGRAM UPDATED | 94/07/12 | R.S. | |
| H 27958 | ITEM 1 WAS 33344-001 | 95/05/19 | R.S. | |
| J 30407 | ITEM 5 WAS 37220-010 | 96/06/12 | R.S. | |
| K 32566 | FIND NO 13 ADDED | 97/04/07 | R.S. | |
| L 40418 | FIND NOS 7 & 10 QTY WAS 8, "REF BOEING VERTOL" REMOVED | 99/08/30 | R.S. | |
| M 41680 | VIEWS UPDATED TO SHOW LUG NUTS | 00/02/07 | R.S. | |
| N 42107 | NOTE 1 ADDED | 00/03/31 | | RS |



CONSTRUCTION GASKET SEALED, SILASTIC SEALED

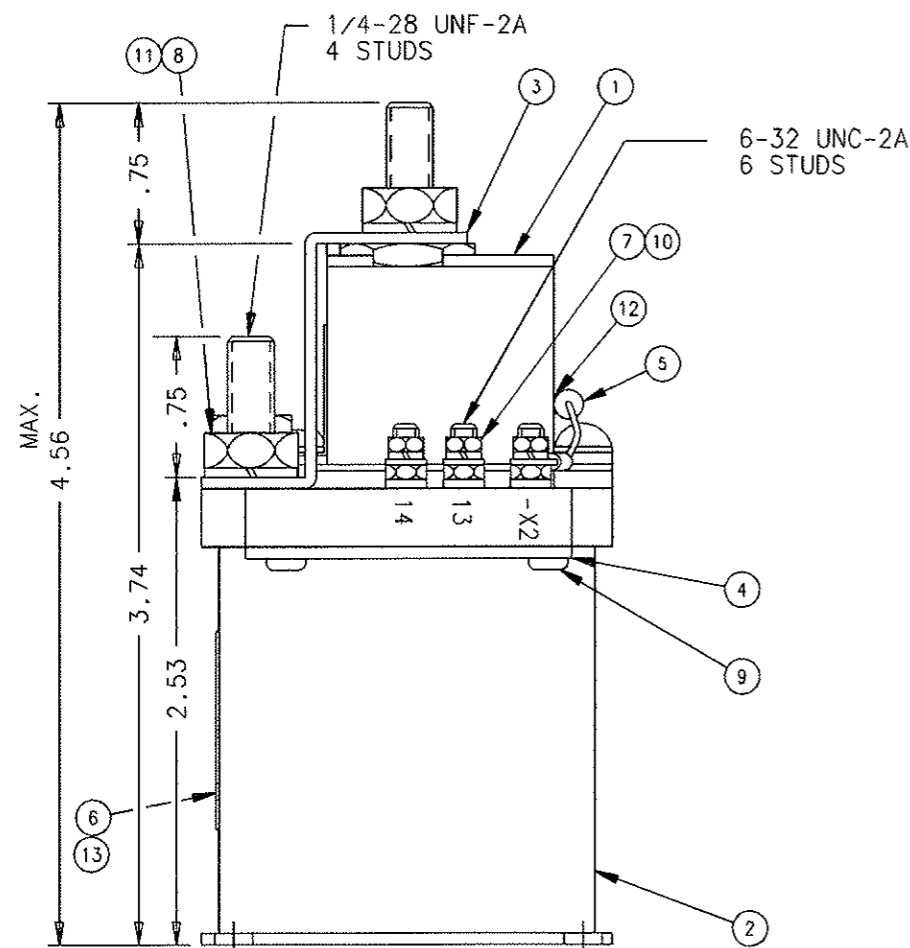
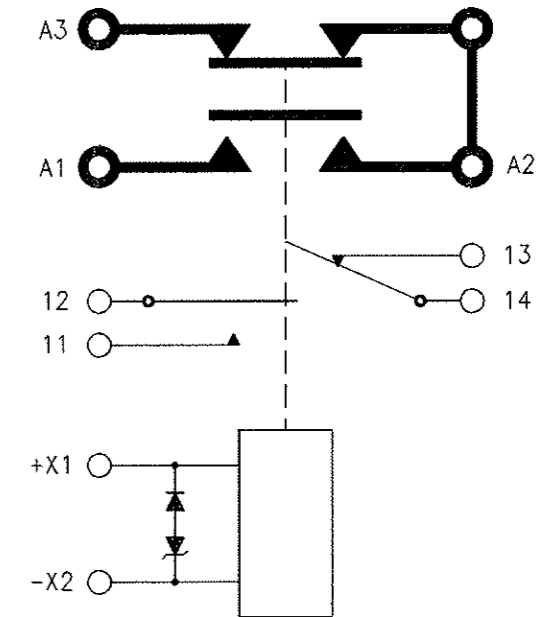
MAIN CONTACTS
 CONFIGURATION SPDT
 VOLTAGE (NOM.) 28 VDC
 CURRENT RES. 100 AMP
 IND 100 AMP
 MOTOR 100 AMP
 INTERRUPTION 1200 AMP

AUXILIARY CONTACTS
 CONFIGURATION SPST N.O. SPST N.C.
 VOLTAGE 28 VDC.
 CURRENT RES. 5 AMP
 IND. 3 AMP
 LAMP 3 AMP

COIL DATA
 MAX OPERATE 30 VDC
 MIN OPERATE 24 VDC
 PICKUP AT 25°C 16.5 V. MAX.
 DROPOUT 0.5 TO 7 V
 RES AT 25°C 50 OHM # 20%
 DUTY CYCLE CONTINUOUS
 SUPPRESSION 45 V PEAK

ENVIRONMENTAL DATA
 AMBIENT TEMP -55°C TO + 71°C
 LIFE ELECTRICAL 50,000 CYCLES MIN
 LIFE MECHANICAL 100,000 CYCLES MIN
 WEIGHT MAX 2 LB

NOTE:
 1. PAINT REMOVED FROM 2 OPPOSITE MTG HOLES, TOP & BOTTOM, FOR GROUNDING PURPOSES.



| FIND NO | QTY | PART OR IDENTIFYING NO | NOMENCLATURE OR DESCRIPTION | FSCM NO | DRAWING OR SPECIFICATION | MATERIAL OR NOTE |
|---------|-----|------------------------|------------------------------------|---------|--------------------------|------------------|
| 13 | 1 | 39529-012 | OVERLAY - NAMEPLATE | | | |
| 12 | AR | 54100-005 | SILASTIC - RTV | | | |
| 11 | 4 | 51807-034 | WASHER LOCK, NO. 1/4 SPLIT | | | BRONZE |
| 10 | 6 | 51806-014 | WASHER LOCK, NO. 6 SPLIT | | | BRONZE |
| 9 | 4 | 51200-020 | SCREW #4 X 1/4 PAN HD. SHEET METAL | | | S. STEEL |
| 8 | 4 | 50407-364 | NUT 1/4-28 X 7/16 X 3/16 HEX | | | BRASS |
| 7 | 6 | 50406-014 | NUT 6-32 X 3/16 X 5/64 HEX | | | BRASS |
| 6 | 1 | 39771-001 | PLATE - NAME | | | |
| 5 | 1 | 37220-020 | LEAD ASSEM. - SUPPRESSION | | | |
| 4 | 2 | 34290-001 | PLATE - COVER | | | |
| 3 | 1 | 33896-001 | BUS BAR | | | |
| 2 | 1 | 33502-040 | CONTACTOR ASSEMBLY - PRIMARY | | | |
| 1 | 1 | 33344-002 | PLATE - COVER | | | |

| | | | | | |
|---|-------------|--------|--|------------|----------|
| UNLESS OTHERWISE SPECIFIED DIMENSIONS ARE IN INCHES TOLERANCES ON | | | HARTMAN ELECTRICAL MANUFACTURING MANSFIELD, OHIO | | |
| 2 PL DEC. | .13 PL DEC. | ANGLES | DR BY | RLS | 00/04/17 |
| * .06 | .010 | * 1° | CHK BY | RS | 00/04/19 |
| | | | ENGR | JL | 00/04/20 |
| | | | MFG | CC | 00/04/20 |
| RELEASE | | | SIZE | CODE IDENT | DWG NO. |
| CONTR NO. | | | D | 74063 | A-1077S |
| GOVT APPVL | | | SCALE | NONE | SHEET |