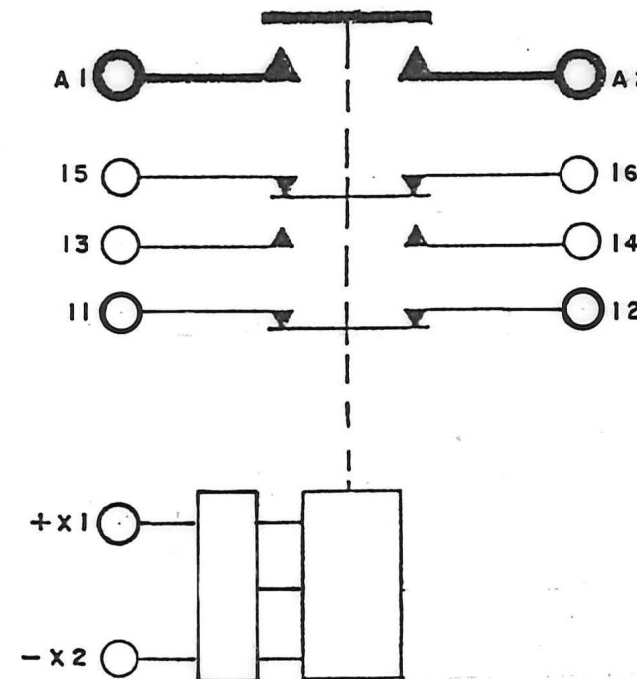
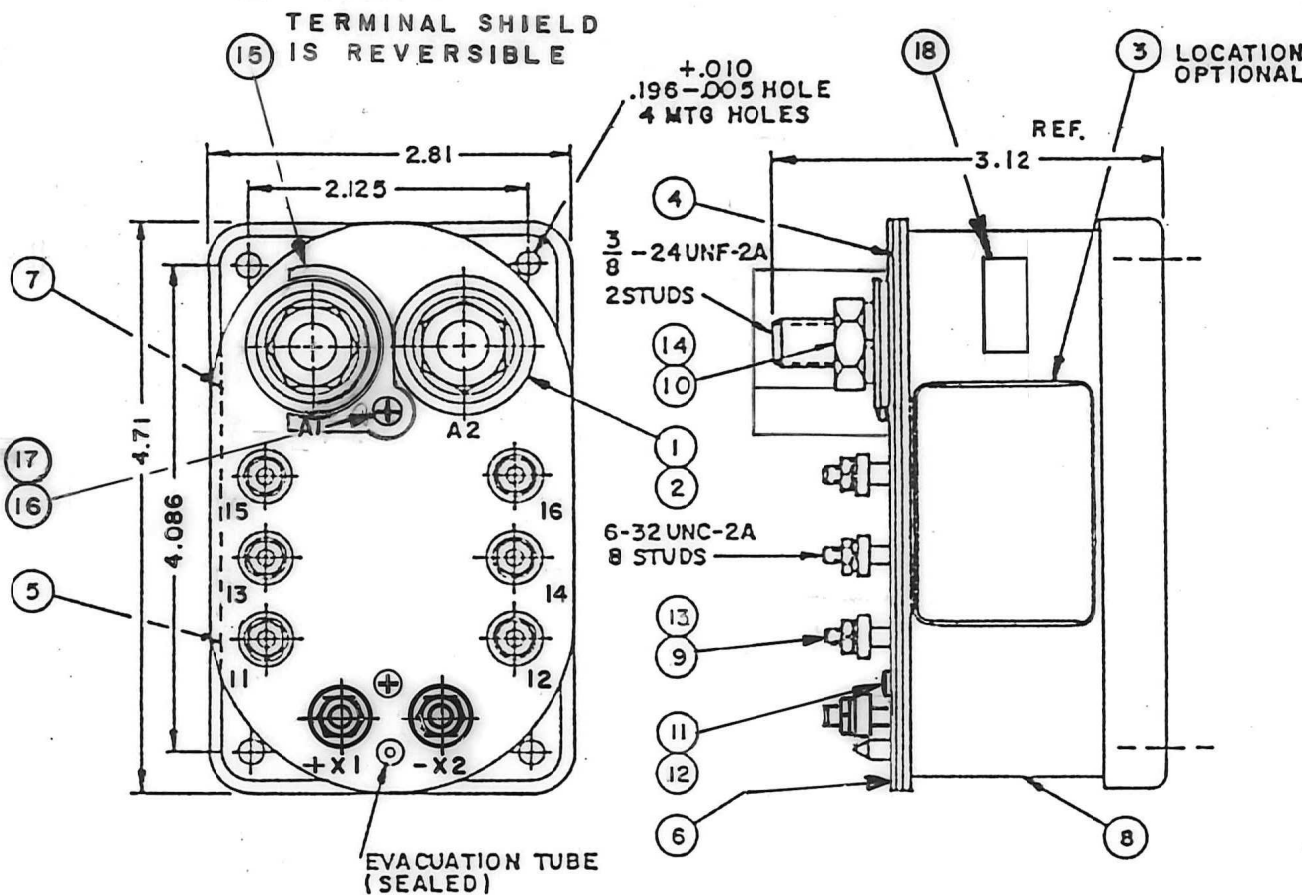


FAA/PMA

REVISIONS		3-21-88	
SYM	DESCRIPTION	DATE	APPROVED
A	RELOCATED ITEMS 11 & 12, ITEM 4 WAS 17441	1-28-88	RS
B	UPDATED VIEW & WIRING DIAGRAM	2-18-88	RS
C	ITEMS 15, 16 & 17 ADDED	3-17-88	RS
D	19503 100 C WAS 85 C, VIBRATION ADDED	7-13-88	J.D.
E	19864 ITEMS 11 & 12 QTY'S WERE 2	4-18-89	RS
F	20775 ADDED FAA/PMA PLATE ITEM 18	5-31-90	JD



CONSTRUCTION
 MAIN CONTACTS
 CONFIGURATION: SPST N.O.
 VOLTAGE (NOMINAL) 28 VDC
 CURRENT: 400 AMP
 INRUSH: 500 AMP FOR 30 SEC.
 RUPTURE: 4000 AMP

AUXILIARY CONTACTS
 CONFIGURATION: 1 FORM Z, 1 FORM Y
 VOLTAGE: 28 VDC
 CURRENT: RES. 5 AMP

COIL DATA
 DUTY CYCLE: CONTINUOUS (ELECTRONIC ECONOMIZING)
 NOMINAL VOLTAGE: 18-31 VDC
 PICKUP MAX. AT 25°C: 16 VDC
 DROPOUT VOLTAGE: 1.5-7 VOLTS

RESISTANCE
 PICKUP: 16 OHM
 HOLD: 910 OHM

ENVIRONMENTAL DATA
 AMBIENT TEMP.: -55°C TO +100°C
 VIBRATION: MIL-R-6106, LEVEL B
 LIFE ELECTRICAL: 50,000 CYCLES
 LIFE MECHANICAL: 100,000 CYCLES
 WEIGHT MAX. (EST.): 2 LBS. 6 OZ.

NOTE:
 PAINT REMOVED FROM MOUNTING SURFACE.

CONFIGURATION CONTROLLED

FIND NO	QTY REQD	PART OR IDENTIFYING NO	NOMENCLATURE OR DESCRIPTION	FSCM NO	DRAWING OR SPECIFICATION	MATERIAL OR NOTE
18	1	58400-066	PLATE - FAA/PMA			
17	1	51805-011	WASHER-LOCK-NO.5 SPLIT			BRONZE
16	1	51205-381	SCREW-NO.5-40X 1 FILL.HD.			BRASS
15	1	41349-001	SHIELD - TERMINAL			
14	2	51807-084	WASHER - LOCK, 3/8 X .688 X .074 SPLIT			BRONZE
13	8	51806-014	WASHER - LOCK NO. 6 SPLIT			BRONZE
12	1	51805-011	WASHER - LOCK NO. 5 SPLIT			BRONZE
11	1	51205-061	SCREW 5-40 X 3/16 BD. HD.			BRASS
10	2	50407-164	NUT 3/8-24 X 5/8 X 7/32 HEX.			BRASS
9	8	50406-034	NUT 6-32 X 1/4 X 5/64 HEX.			BRASS
8	1	41315-010	CONTACTOR ASSEMBLY - PRIMARY			
7	1	41326-001	PLATE - WIRING DIAGRAM			
6	1	41279-001	PLATE - BASE COVER			
5	1	25695-001	PLATE - WARNING			
4	1	41275-001	PLATE - SPACER			
3	1	16043-001	PLATE - NAME			
2	2	13121-001	TERMINAL - INSULATING CUP			
1	2	13120-001	LUG - SEAT			

UNLESS OTHERWISE SPECIFIED
 DIMENSIONS ARE IN INCHES
 TOLERANCES ON
 2 PL.DEC. | 3 PL.DEC. | ANGLES
 ±.06 | ±.010 | ± 1°

FIND NO	QTY REQD	PART OR IDENTIFYING NO	NOMENCLATURE OR DESCRIPTION	FSCM NO	DRAWING OR SPECIFICATION	MATERIAL OR NOTE
HARTMAN ELECTRICAL MANUFACTURING MANSFIELD, OHIO						
			DR BY	J. J. D.	10-13-87	POWER CONTACTOR 400 AMP, 28 VOLTS
			CHECKED	RS	10-13-87	
			ENGINEER	DM	10-13-87	
			MFG.	RP	03-21-88	
				RELEASE	SIZE	FSCM NO
				CONTR NO	C	74063
					DWG NO	AH-703 F
					SCALE	1/1
						SHEET